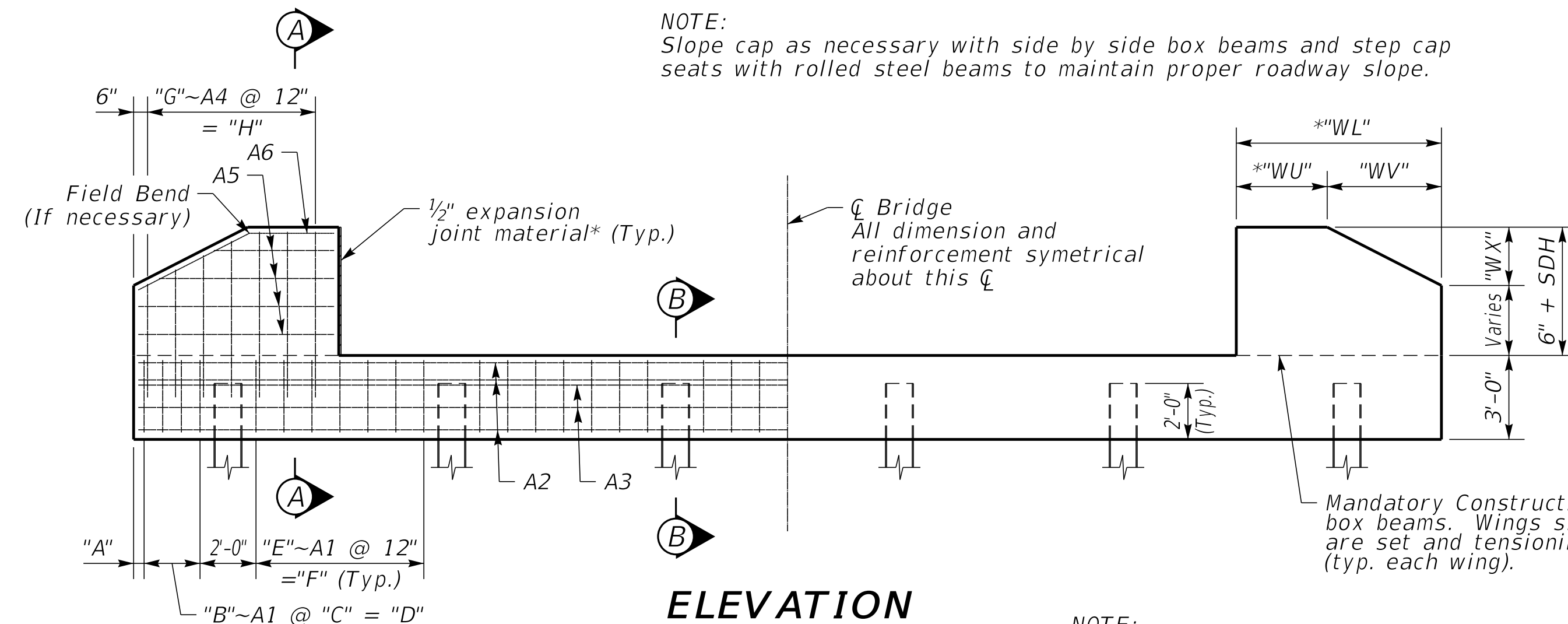
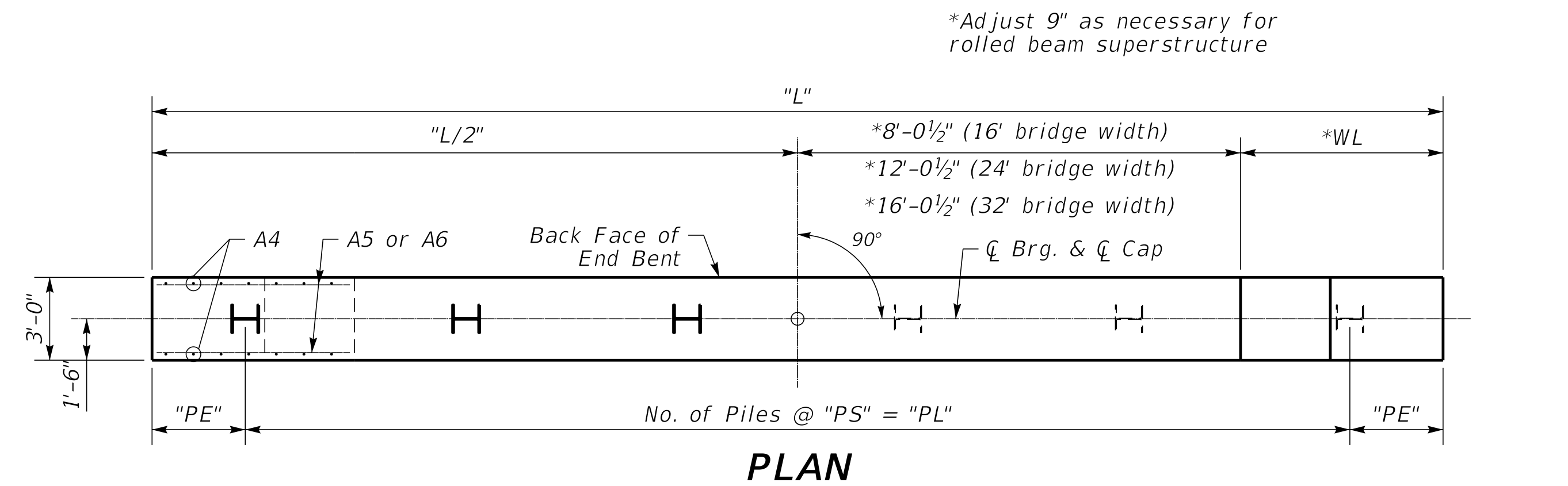


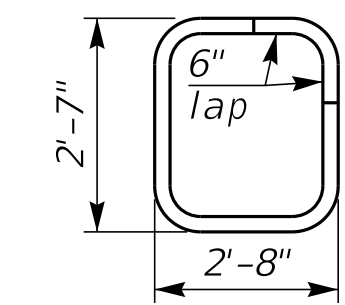
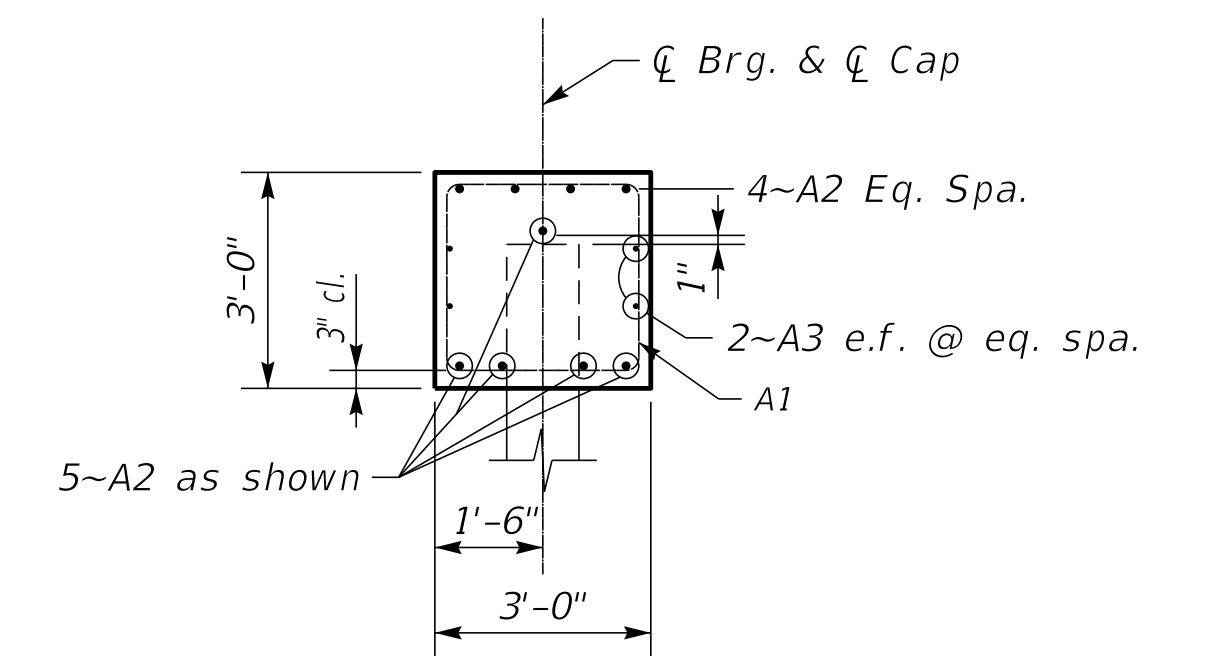
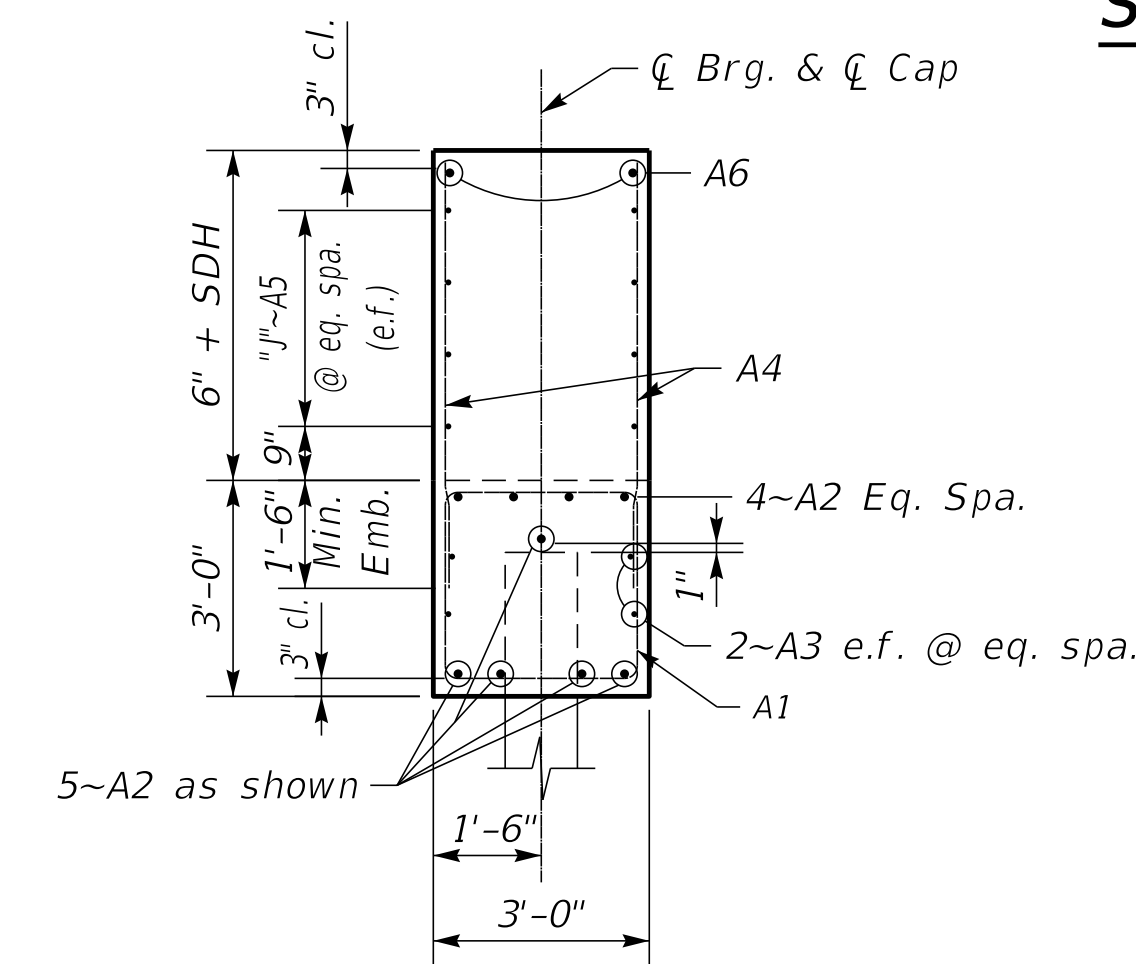
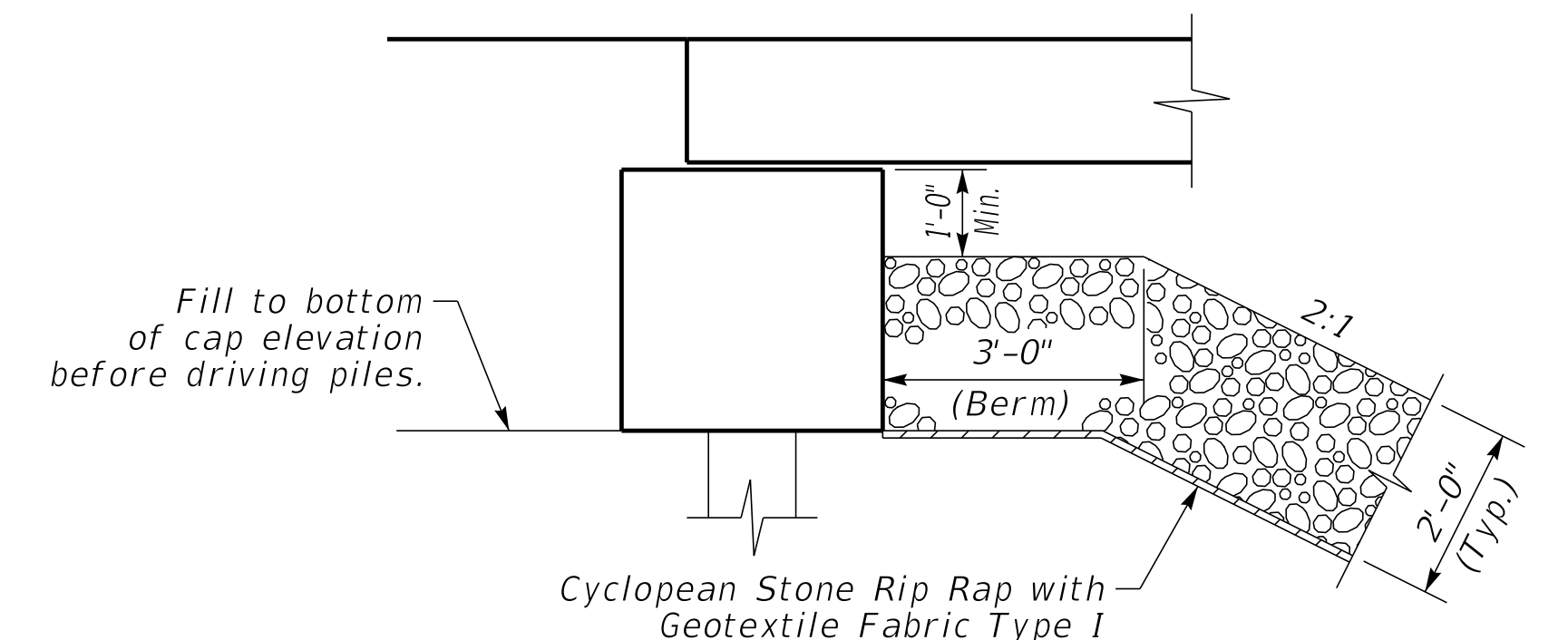
SUPERSTRUCTURE HEIGHT SDH = Beam+Pad Height (+haunch+slab) [if applicable]		CAP BILL OF REINFORCEMENT															WING BILL OF REINFORCEMENT				
		16'-0" BRIDGE WIDTH					24'-0" BRIDGE WIDTH					32'-0" BRIDGE WIDTH									
		MARK	TYPE	NO.	SIZE	LENGTH	MARK	TYPE	NO.	SIZE	LENGTH	MARK	TYPE	NO.	SIZE	LENGTH	MARK	TYPE	NO.	SIZE	LENGTH
H1	12" ≤SDH≤27"	A1e	14s	22	5	11-0	A1e	14s	29	5	11-0	A1e	14s	36	5	11-0	A4e	Str.	12	5	4-0
		A2e	Str.	9	8	22-9	A2e	Str.	9	8	30-9	A2e	Str.	9	8	38-9	A5e	Str.	8	5	3-2
		A3e	Str.	4	5	22-9	A3e	Str.	4	5	30-9	A3e	Str.	4	5	38-9	A6e	Str.	4	6	3-2
H2	27" <SDH≤35"	A1e	14s	24	5	11-0	A1e	14s	30	5	11-0	A1e	14s	38	5	11-0	A4e	Str.	20	5	4-8
		A2e	Str.	9	8	25-5	A2e	Str.	9	8	33-5	A2e	Str.	9	8	41-5	A5e	Str.	12	5	4-6
		A3e	Str.	4	5	25-5	A3e	Str.	4	5	33-5	A3e	Str.	4	5	41-5	A6e	Str.	4	6	4-6
H3	35' <SDH≤50"	A1e	14s	29	5	11-0	A1e	14s	36	5	11-0	A1e	14s	43	5	11-0	A4e	Str.	28	5	5-11
		A2e	Str.	9	8	30-5	A2e	Str.	9	8	38-5	A2e	Str.	9	8	46-5	A5e	Str.	16	5	7-0
		A3e	Str.	4	5	30-5	A3e	Str.	4	5	38-5	A3e	Str.	4	5	46-5	A6e	Str.	4	6	7-5

- NOTES:**
- 1) Conform to KYTC, Standard Specifications, Current Edition.
 - 2) Concrete to be Class "A", 3500 psi.
 - 3) Rebar to be epoxy coated A615, Grade 60.
 - 4) Maintain 2" clear cover to reinforcement unless otherwise noted.
 - 5) End Bents are designed for the maximum span of the following steel and concrete beams as shown in the current standards:
 H1 - B12, CB12, B17, CB17, B21 or rolled steel beams up to 16" nominal depth.
 H2 - CB21, B27, CB27, B33 or rolled steel beams up to 24" nominal depth.
 H3 - CB33, B42, CB42 or rolled steel beams up to 36" nominal depth.
 - 6) Piles may be HP12x53 or 16" Steel Pipes with 1/2" wall thickness.
 - 7) Piles driven to rock must be driven to Refusal. Friction Piles must be driven to (Pile Load/0.4) using the Gates Method.
 - 8) Pile load given is Factored Strength Load.
 - 9) Piles must be driven 10' into existing ground or to refusal on bedrock. Piles at wet crossings must be driven to 10' below stream bed or to refusal on bedrock. A minimum pile length of 10' is required in all circumstances.
 - 10) Contractor shall provide a hammer capable of driving the piling to refusal or capacity without encountering excessive blow counts or damaging the pile. Contractor shall be responsible for all damaged piling.

BRIDGE WIDTH	PILE LOAD		DIMENSIONS																	QUANTITIES		
	SIZE	TONS	NO.	PE	PS	PL	A	B	C	D	E	F	G	H	J	L	WL	WU	WV	WX	CONCRETE (C.Y.)	STEEL (LBS.)
16	H1	92	3	3'-6 1/2"	8'-0"	16'-0"	3 1/2"	4	9"	2'-3"	7	6'-0"	3	2'-0"	2	23'-1"	3'-6"	3'-6"	0	0	9.8	991
	H2	87	4	2'-4 1/2"	7'-0"	21'-0"	2 1/2"	3	7"	1'-2"	6	5'-0"	5	4'-0"	3	25'-9"	4'-10"	4'-10"	0	0	12.2	1175
	H3	107	4	3'-4 1/2"	8'-0"	24'-0"	4 1/2"	4	8"	2'-0"	7	6'-0"	7	6'-0"	4	30'-9"	7'-4"	3'-3"	4'-1"	2'-1"	16.8	1527
24	H1	97	4	3'-6 1/2"	8'-0"	24'-0"	3 1/2"	4	9"	2'-3"	7	6'-0"	3	2'-0"	2	31'-1"	3'-6"	3'-6"	0	0	12.4	1297
	H2	99	5	2'-10 1/2"	7'-0"	28'-0"	2 1/2"	3	10"	1'-8"	6	5'-0"	5	4'-0"	3	33'-9"	4'-10"	4'-10"	0	0	14.8	1469
	H3	122	5	3'-4 1/2"	8'-0"	32'-0"	4 1/2"	4	8"	2'-0"	7	6'-0"	7	6'-0"	4	38'-9"	7'-4"	3'-3"	4'-1"	2'-1"	19.4	1833
32	H1	103	5	3'-6 1/2"	8'-0"	32'-0"	3 1/2"	4	9"	2'-3"	7	6'-0"	3	2'-0"	2	39'-1"	3'-6"	3'-6"	0	0	15.1	1604
	H2	109	6	3'-4 1/2"	7'-0"	35'-0"	4 1/2"	4	8"	2'-0"	6	5'-0"	5	4'-0"	3	41'-9"	4'-10"	4'-10"	0	0	17.5	1787
	H3	133	6	3'-4 1/2"	8'-0"	40'-0"	4 1/2"	4	8"	2'-0"	7	6'-0"	7	6'-0"	4	46'-9"	7'-4"	3'-3"	4'-1"	2'-1"	22.1	2139



NOTE:
Trim A4-A6 bars as necessary.



*Expansion Joint Material:
AASHTO M153
Type-I Sponge Rubber
Type-II Cork permitted with contractor provided documentation that the Build America Buy America requirements are satisfied.

SUBMITTED *Michael Cost* 10/25/2024
DIVISION DIRECTOR DATE