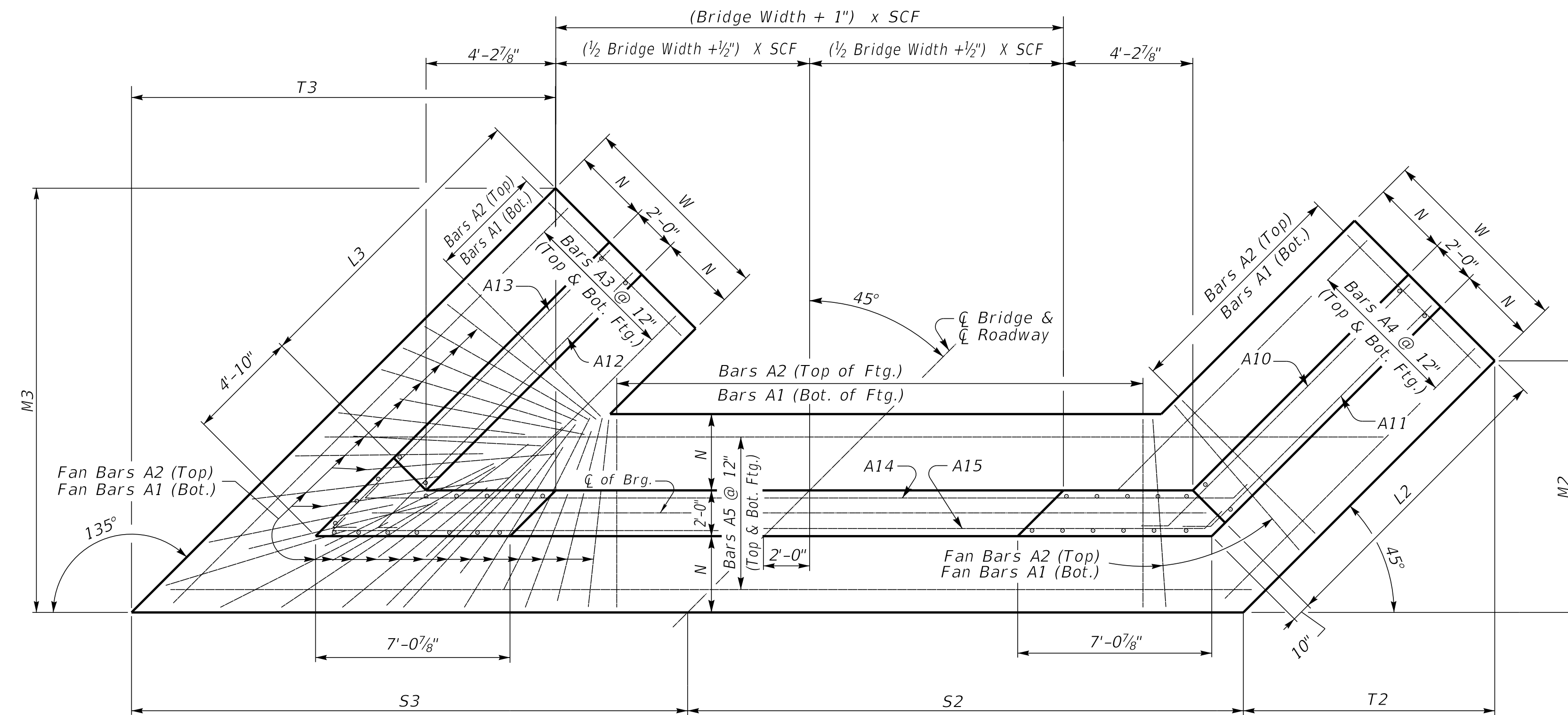


45° SKEW VARIABLE BRIDGE WIDTH 2:1 FILL SLOPES WINGS PARALLEL TO ROADWAY

ABUTMENT SKEW CORRECTION FACTOR (SCF) = 1.414

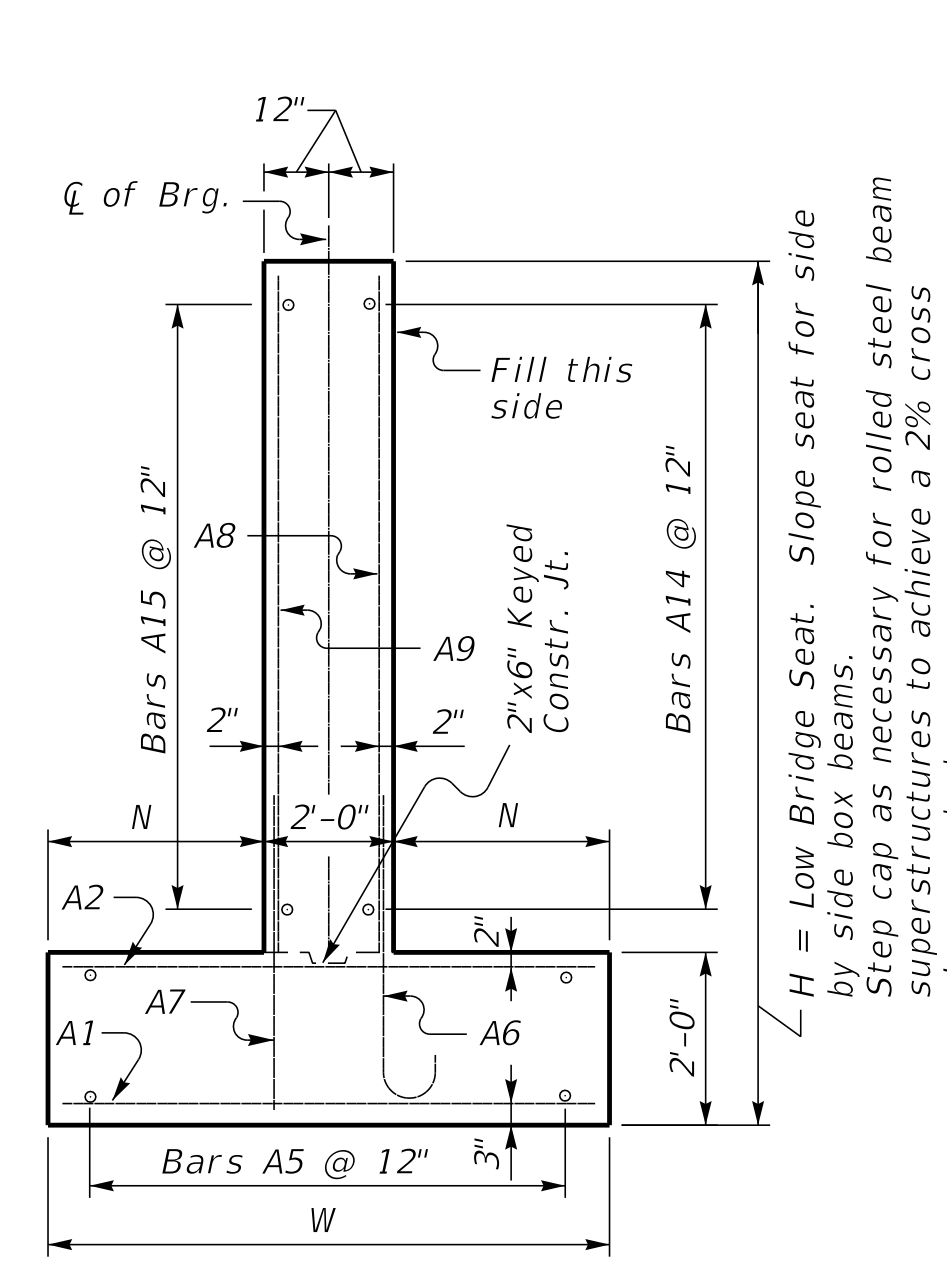


(Left Skew as shown; right skew opp. hand)

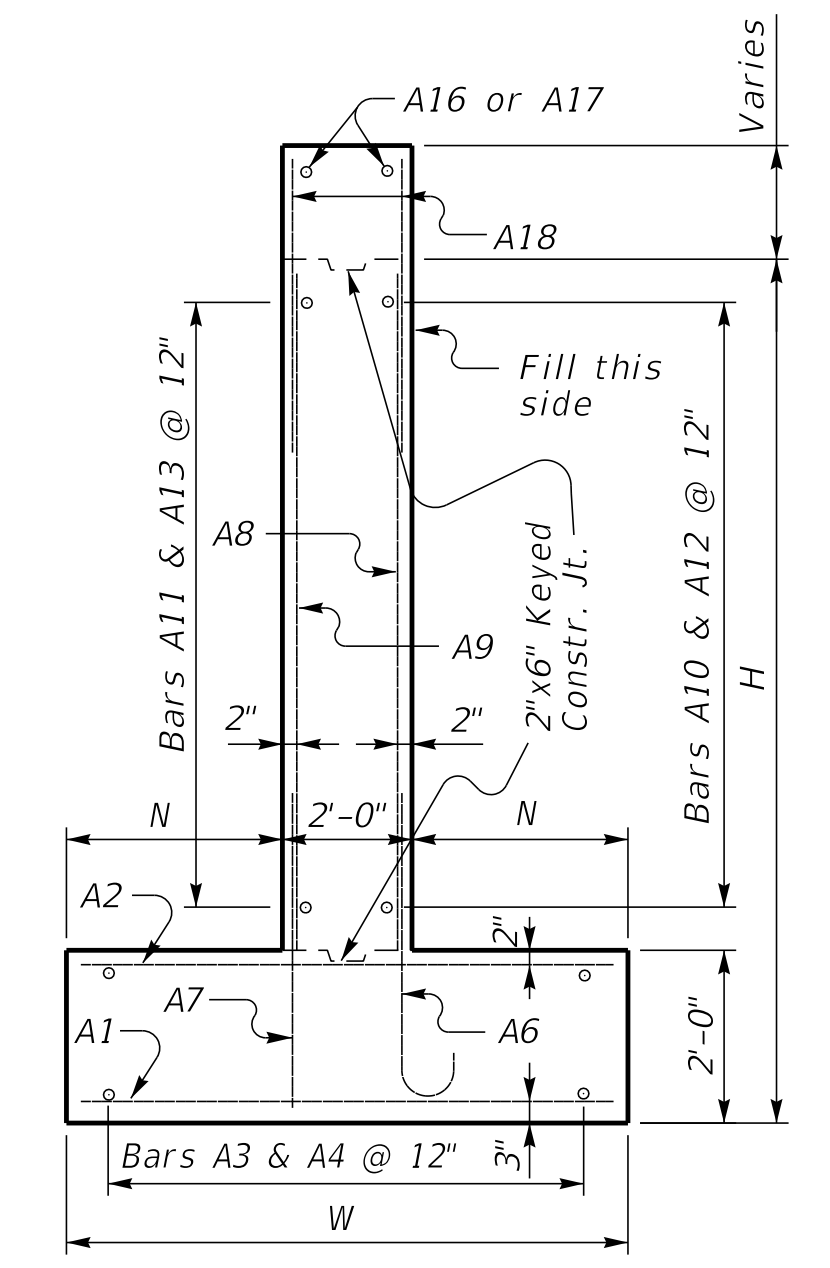
PLAN

NOTE: Trim A16 & A17 bars if necessary
Trim A3 bars as necessary

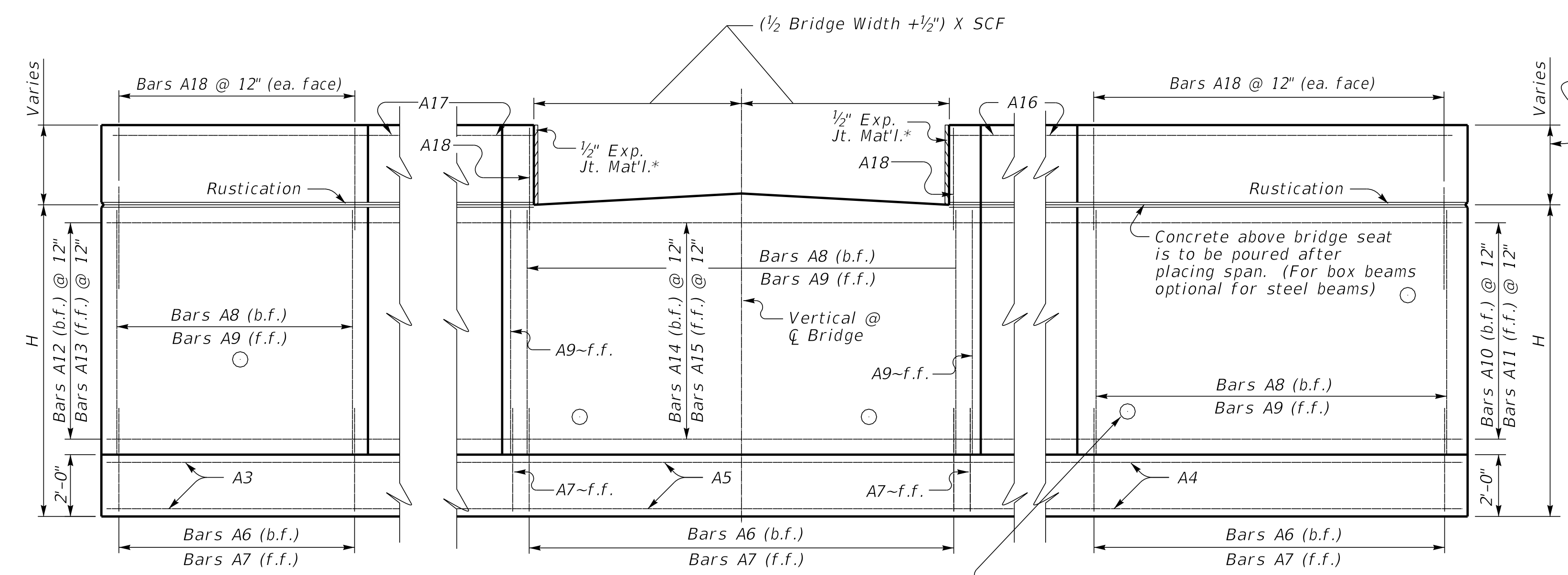
For fanning A1 & A2 bars with an acute angle, space @ 12" at face of toe, then as you get closer to the corner start pulling every other bar back toward the heel. (Similar to as shown)



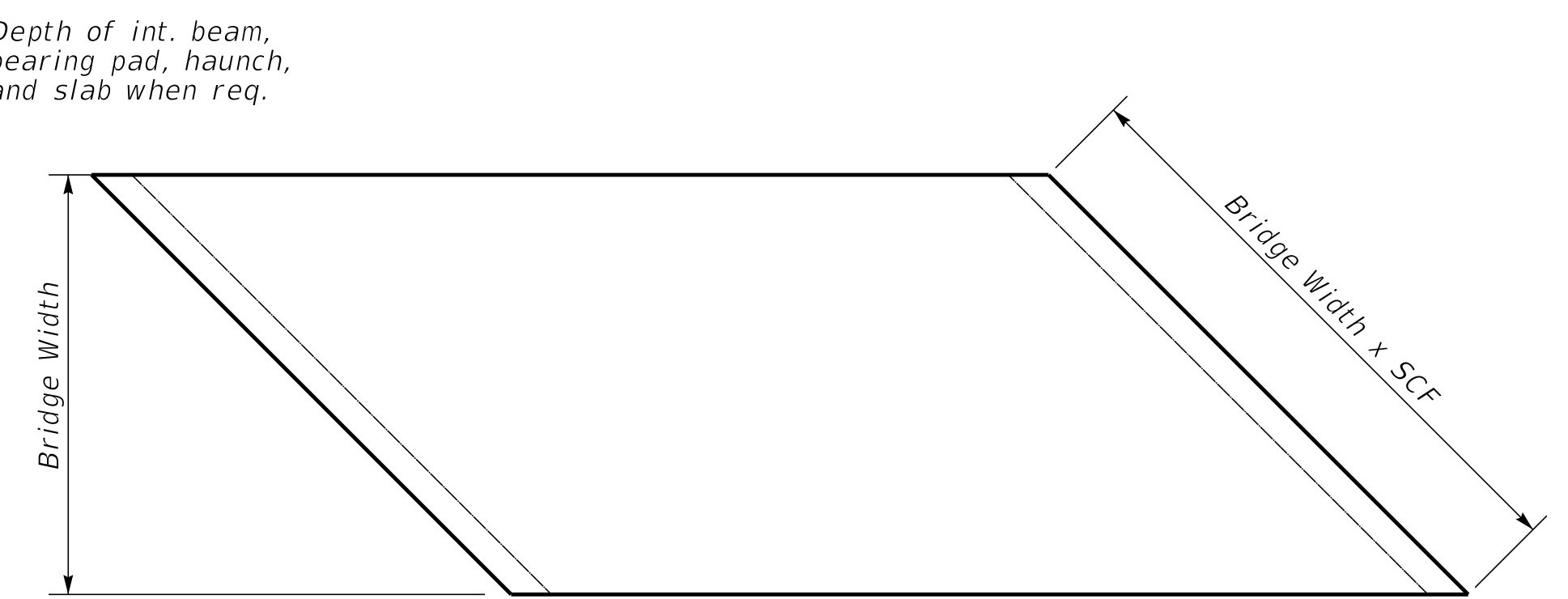
WALL SECTION



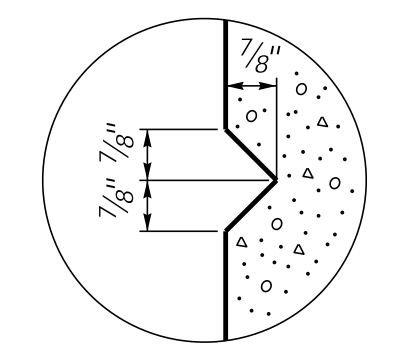
WING SECTION



ELEVATION



PLAN OF SUPERSTRUCTURE SLAB



RUSTICATION GROOVE

*Expansion Joint Material:
AASHTO M153
Type-I Sponge Rubber
Type-II Cork permitted with contractor provided documentation that the Build America Buy America requirements are satisfied.

Place 4" weep hole drains at 8'-0" centers at this elevation as to afford best drainage of backfill, in accordance with the Standard Specifications.

SUBMITTED *Michael Cost* 10/25/2024
DIVISION DIRECTOR DATE