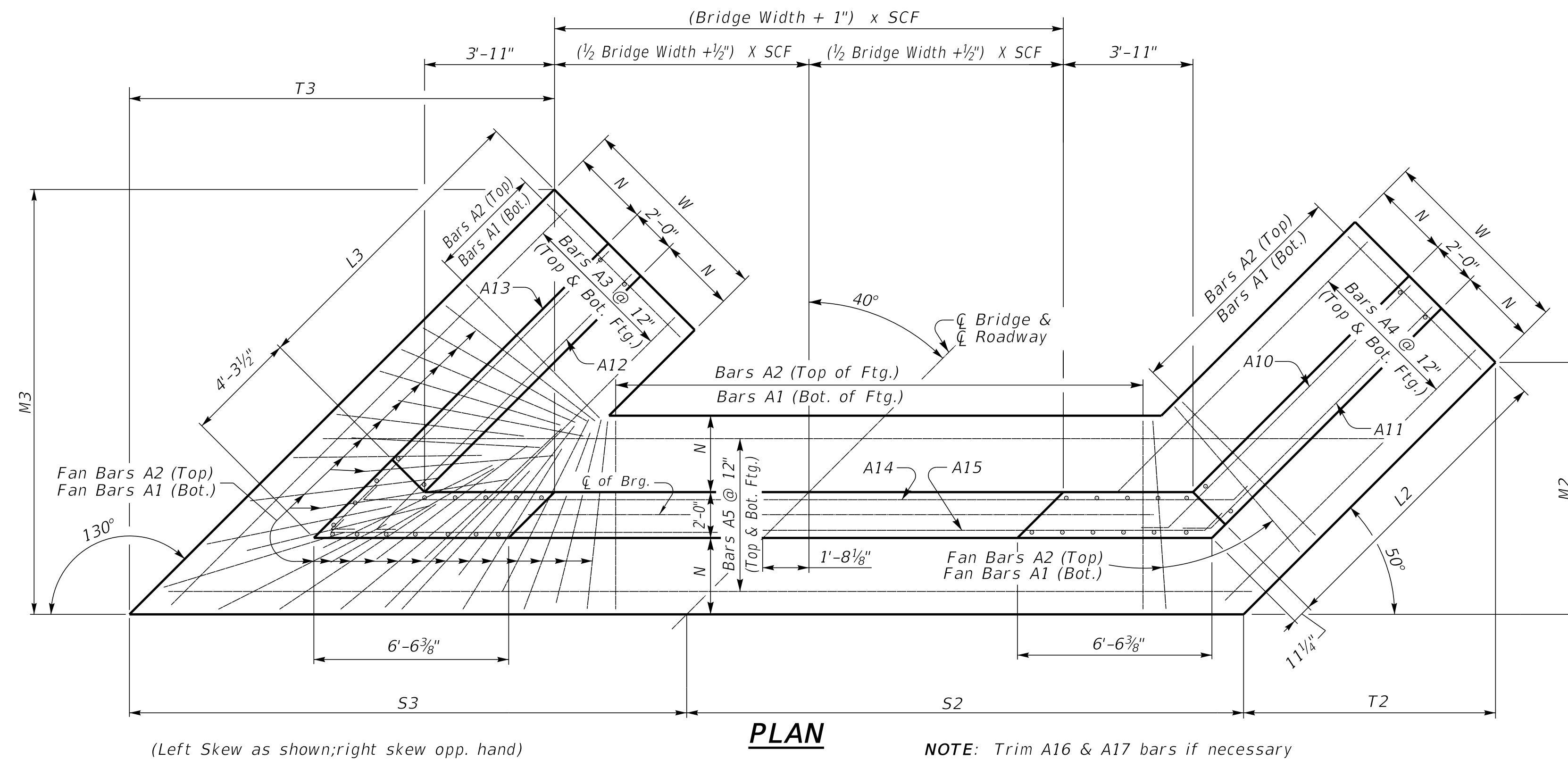


40° SKEW VARIABLE BRIDGE WIDTH 2:1 FILL SLOPES WINGS PARALLEL TO ROADWAY

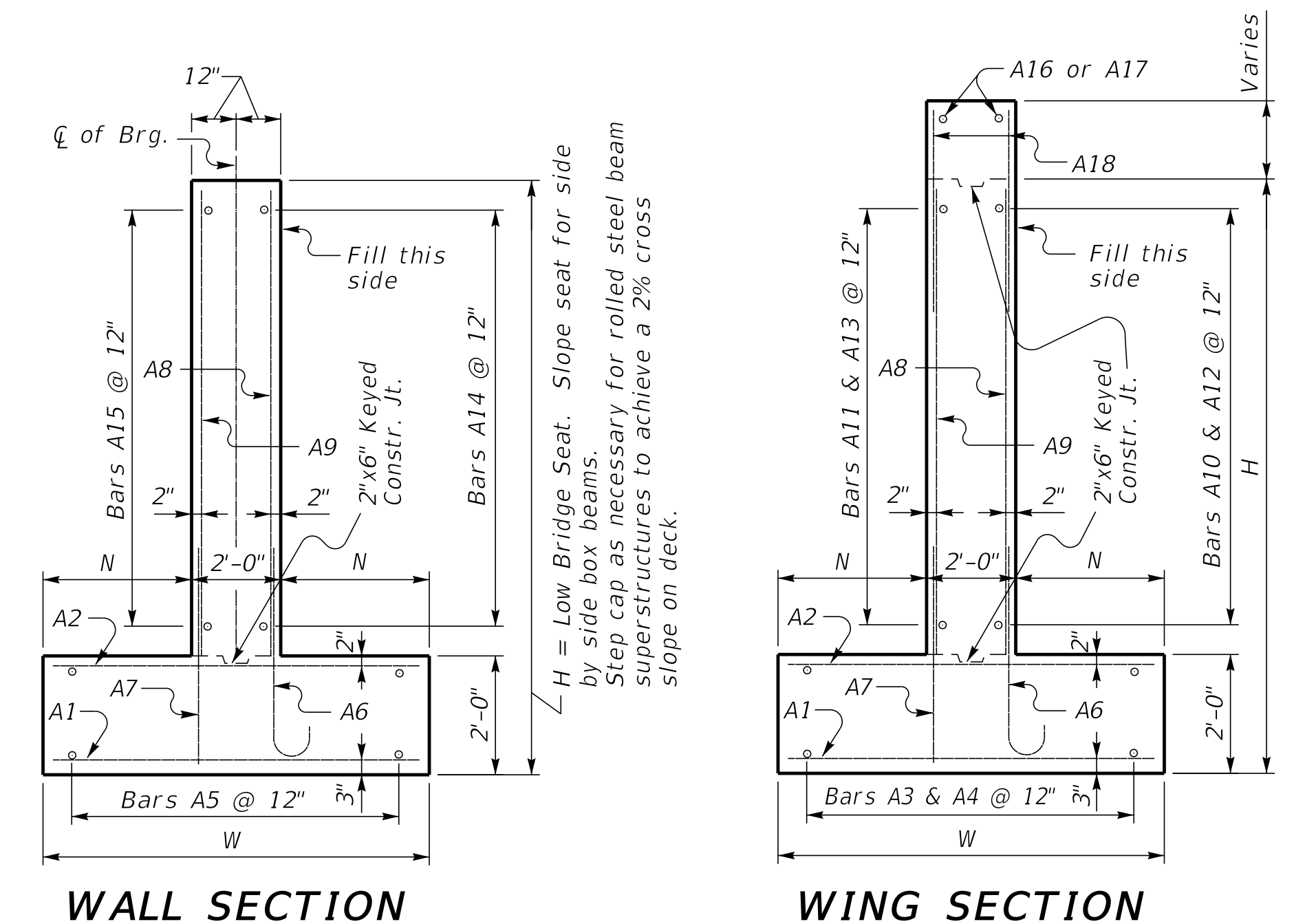
ABUTMENT SKEW CORRECTION FACTOR (SCF) = 1.305

For fanning A1 & A2 bars with an acute angle, space @ 12" at face of toe, then as you get closer to the corner start pulling every other bar back toward the heel. (Similar to as shown)



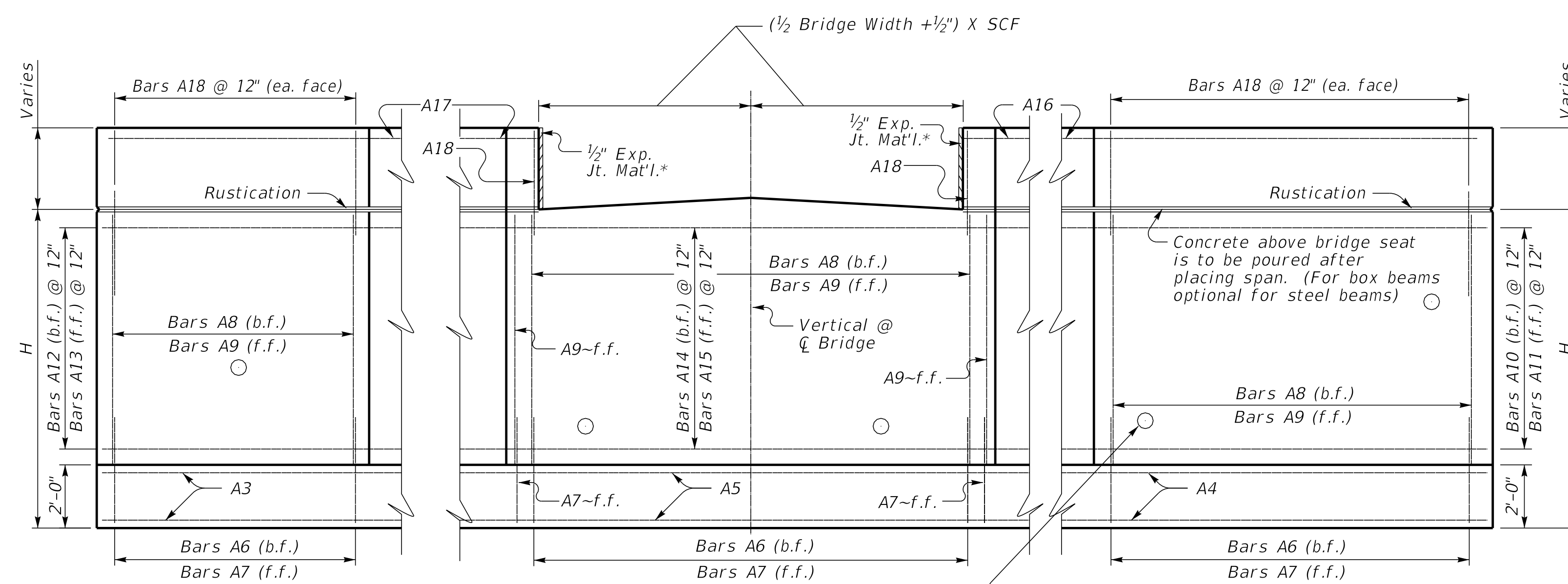
PLAN

NOTE: Trim A16 & A17 bars if necessary
Trim A3 bars as necessary

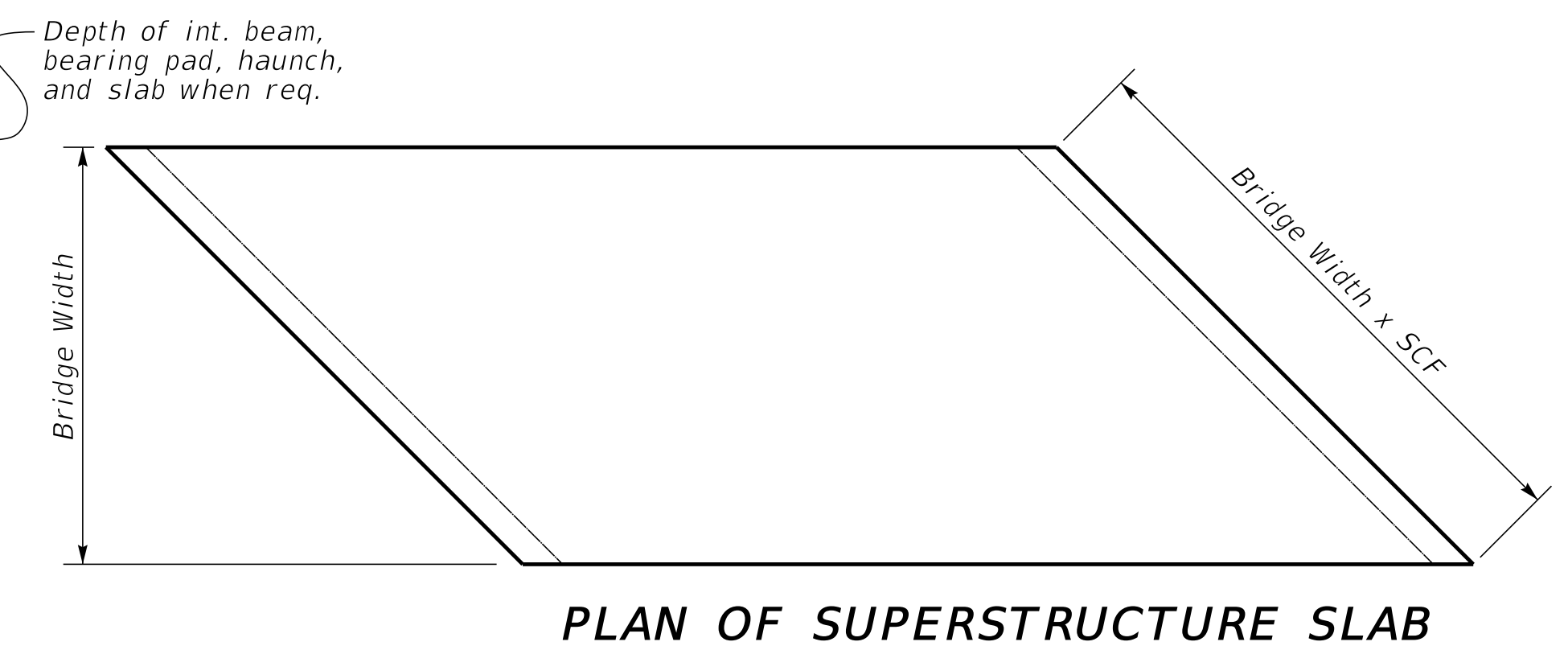


WALL SECTION

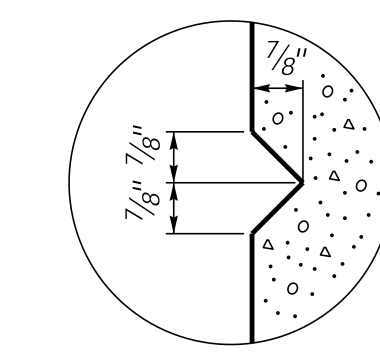
WING SECTION



ELEVATION



PLAN OF SUPERSTRUCTURE SLAB



**RUSTICATION
GROOVE**

*Expansion Joint Material:
AASHTO M153
Type-I Sponge Rubber
Type-II Cork permitted with contractor provided
documentation that the Build America Buy America
requirements are satisfied.

Place 4" weep hole drains at 8'-0" centers at such
elevation as to afford best drainage of backfill,
in accordance with the Standard Specifications.

Depth of int. beam,
bearing pad, haunch,
and slab when req.

SUBMITTED *Michael Cost* 10/25/2024
DIVISION DIRECTOR DATE



COMMONWEALTH OF KENTUCKY
DEPARTMENT OF HIGHWAYS



DRAWING TITLE: SEPIA 077 - 40° SKEW VARIABLE WIDTH ABUTMENT PARALLEL WINGS

ITEM NO. COUNTY OF

SHEET NO.