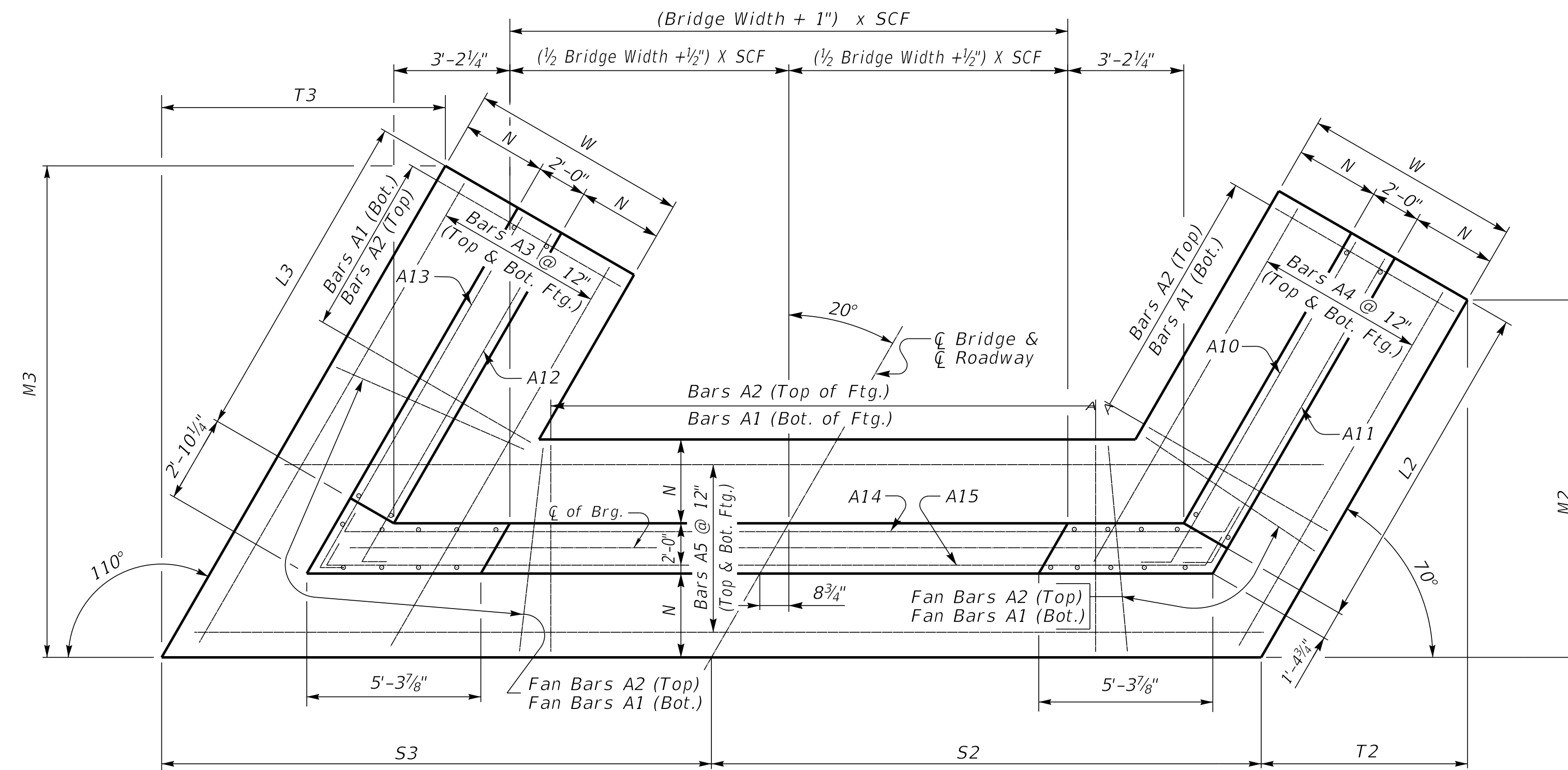


20° SKEW VARIABLE BRIDGE WIDTH 2:1 FILL SLOPES WINGS PARALLEL TO ROADWAY

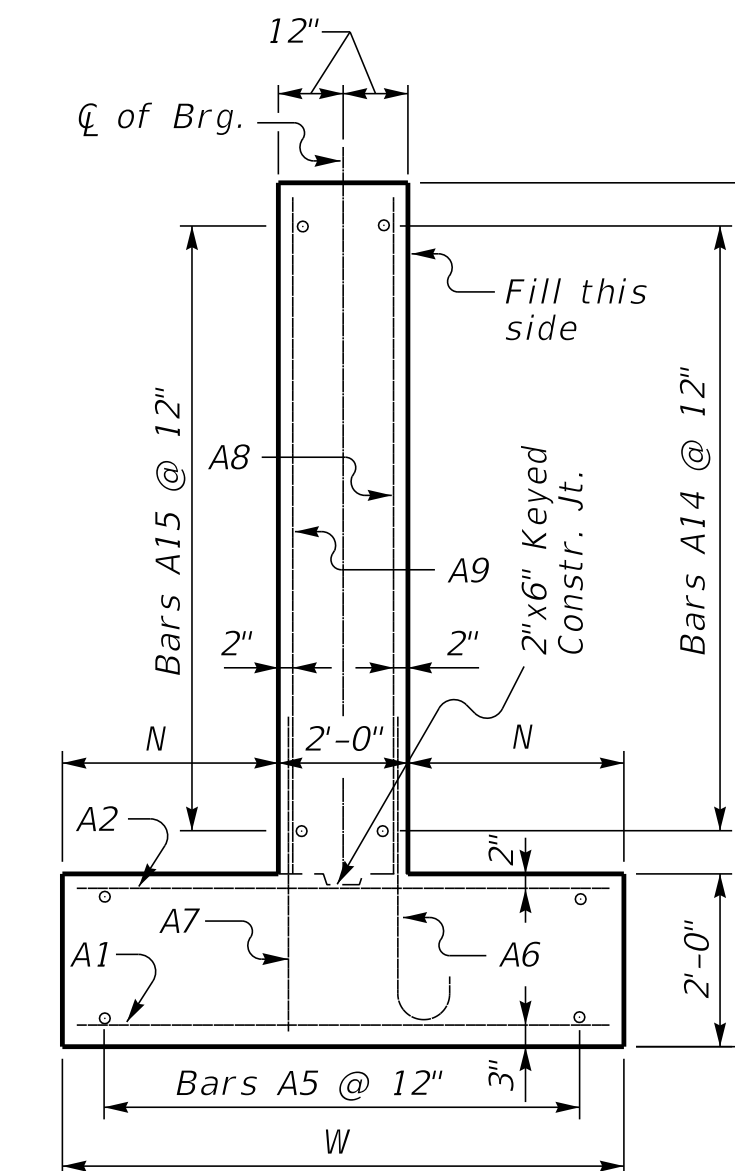
ABUTMENT SKEW CORRECTION FACTOR (SCF) = 1.064



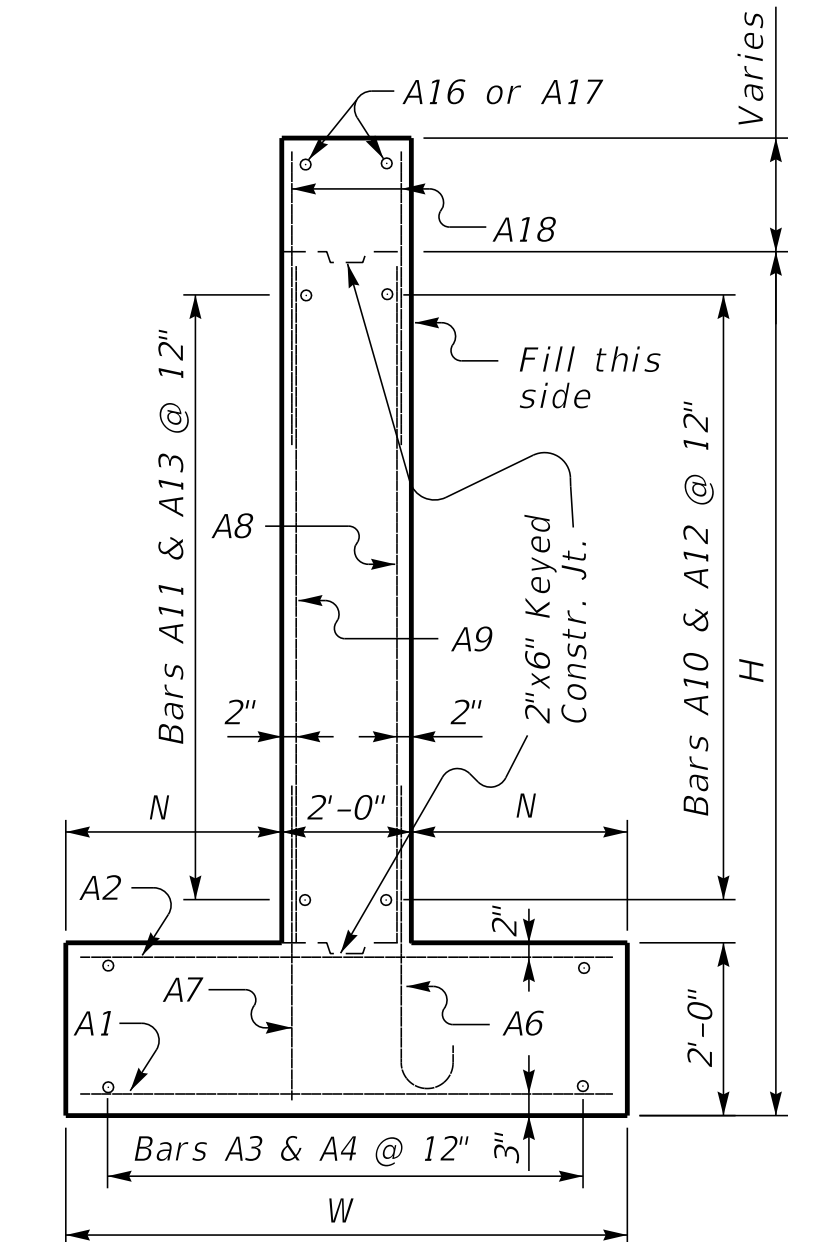
(Left Skew as shown; right skew opp. hand)

PLAN

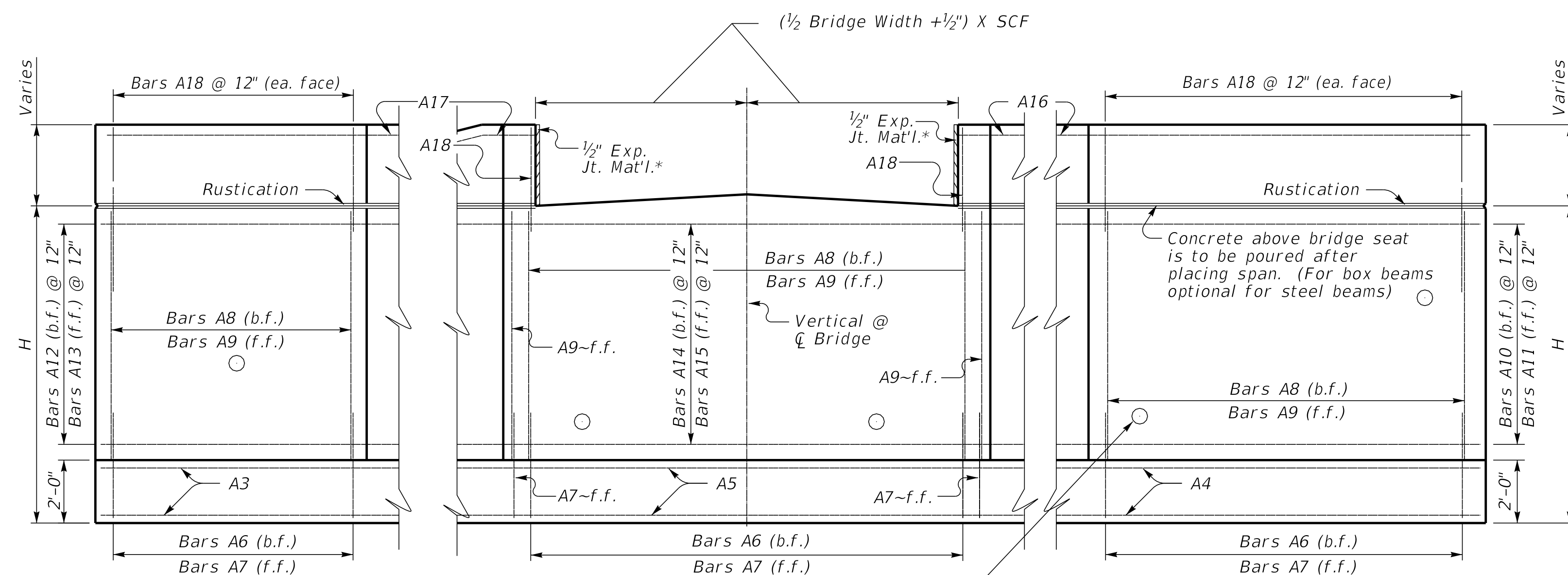
NOTE: Trim A16 & A17 bars if necessary
Trim A3 bars as necessary



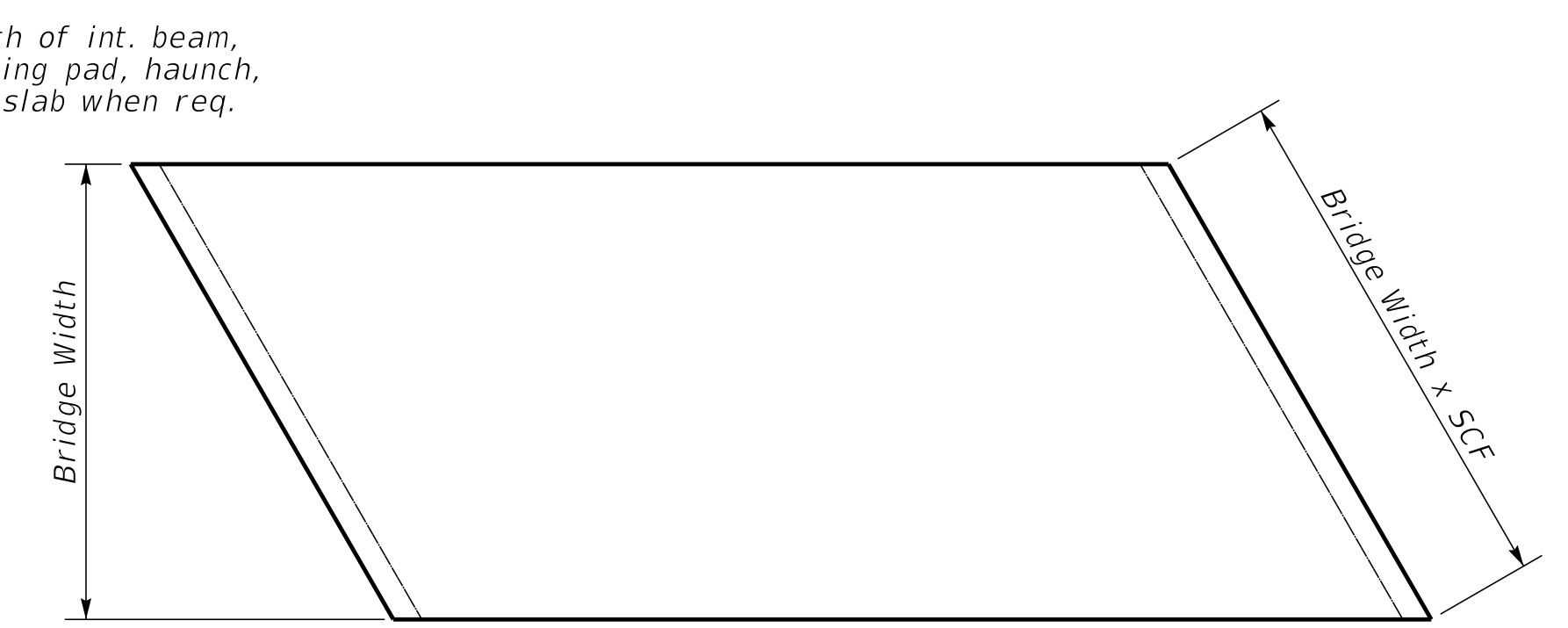
WALL SECTION



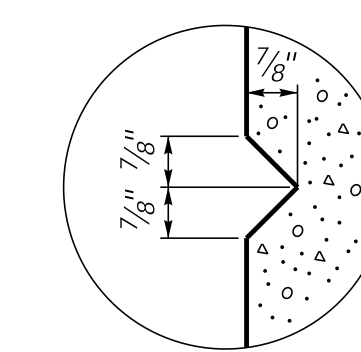
WING SECTION



ELEVATION



PLAN OF SUPERSTRUCTURE SLAB



RUSTICATION GROOVE

*Expansion Joint Material:
AASHTO M153
Type-I Sponge Rubber
Type-II Cork permitted with contractor provided
documentation that the Build America Buy America
requirements are satisfied.

Depth of int. beam,
bearing pad, haunch,
and slab when req.

Place 4" weep hole drains at 8'-0" centers at such
elevation as to afford best drainage of backfill,
in accordance with the Standard Specifications.

SUBMITTED *Michael Cost* 10/25/2024
DIVISION DIRECTOR DATE



COMMONWEALTH OF KENTUCKY
DEPARTMENT OF HIGHWAYS



DRAWING TITLE: SEPIA 073 - 20° SKEW VARIABLE WIDTH ABUTMENT PARALLEL WINGS

ITEM NO. COUNTY OF

SHEET NO.