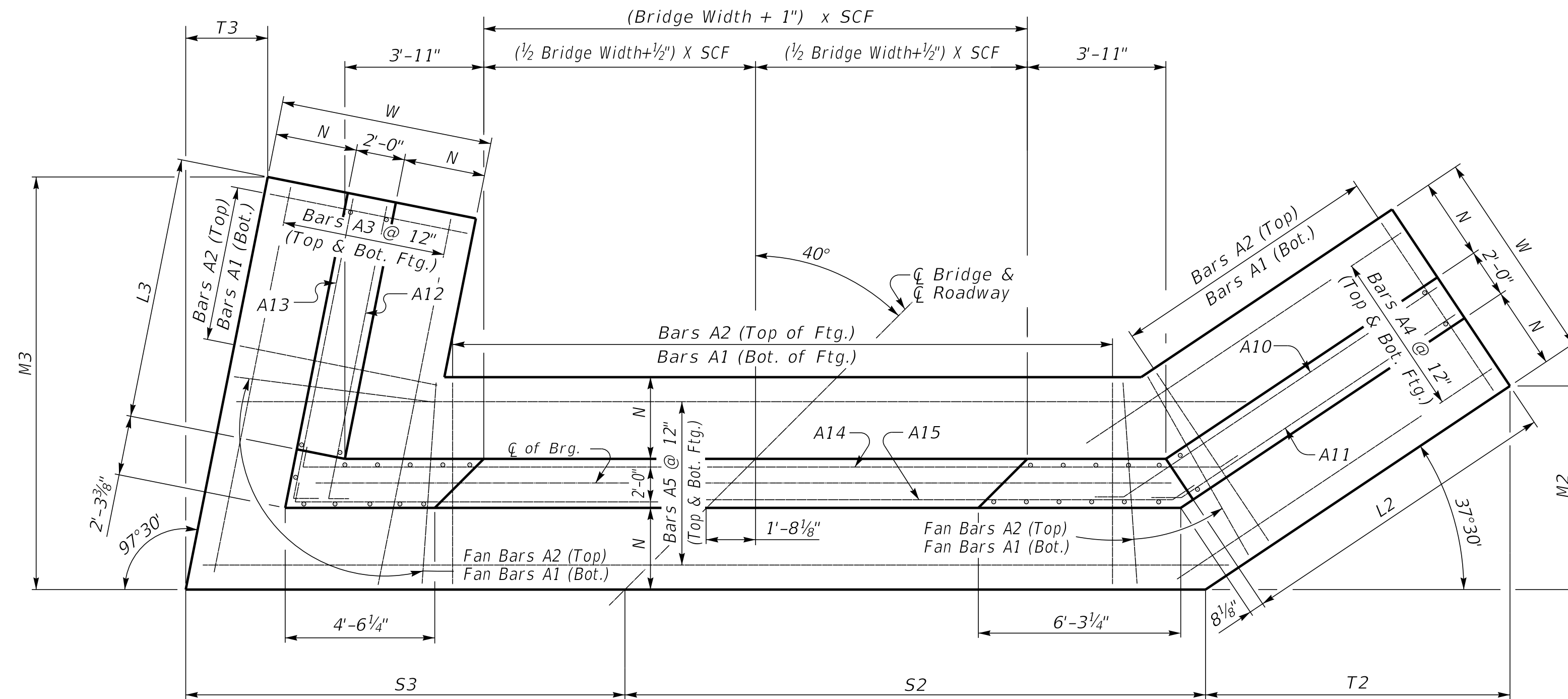


40° SKEW VARIABLE BRIDGE WIDTH 2:1 FILL SLOPES WINGS SKEWED 25% FROM ROADWAY TO BREASTWALL

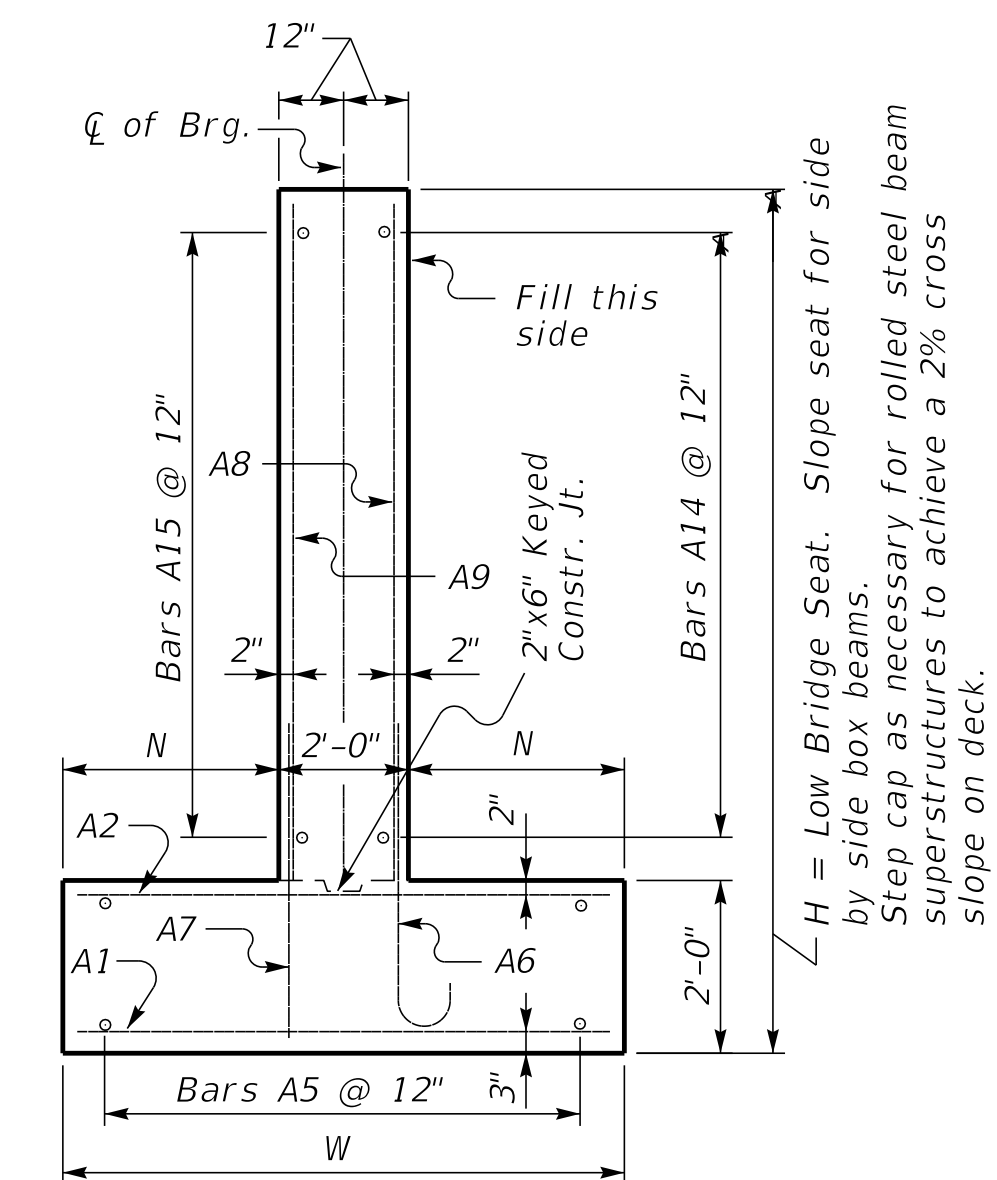
ABUTMENT SKEW CORRECTION FACTOR (SCF) = 1.305



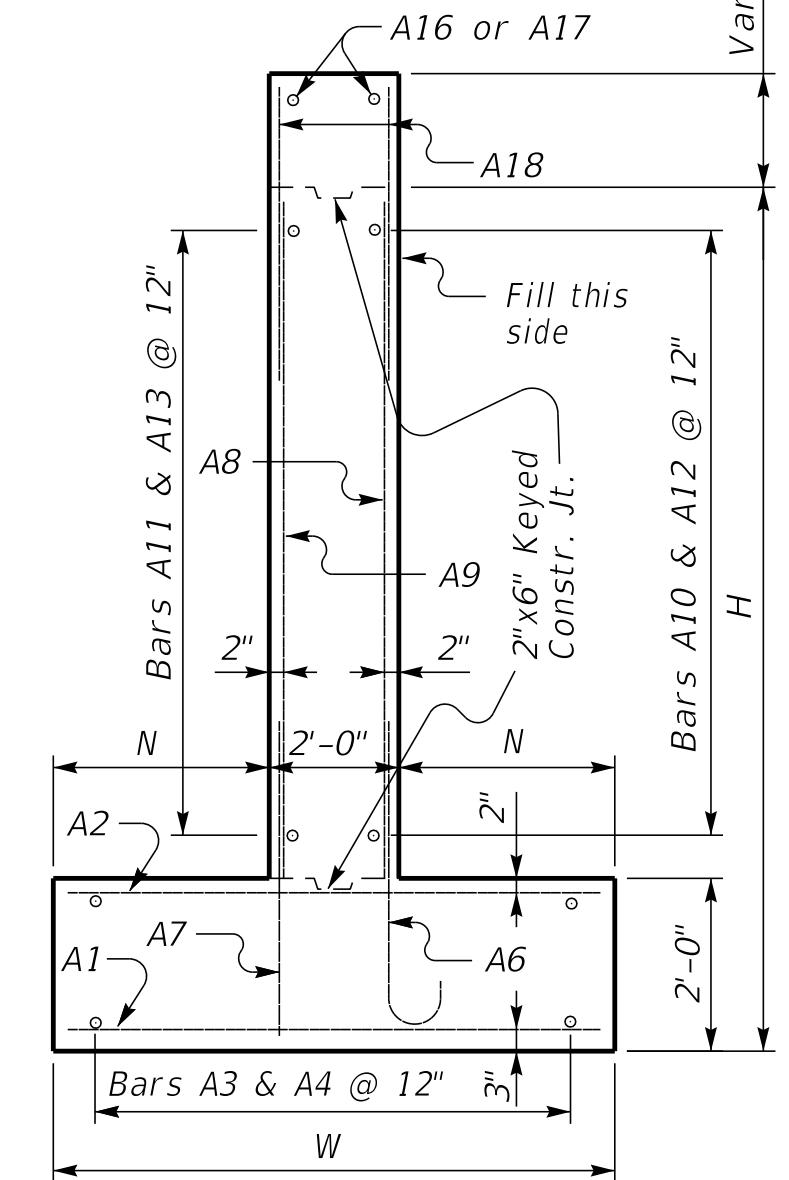
(Left Skew as shown; right skew opp. hand)

PLAN

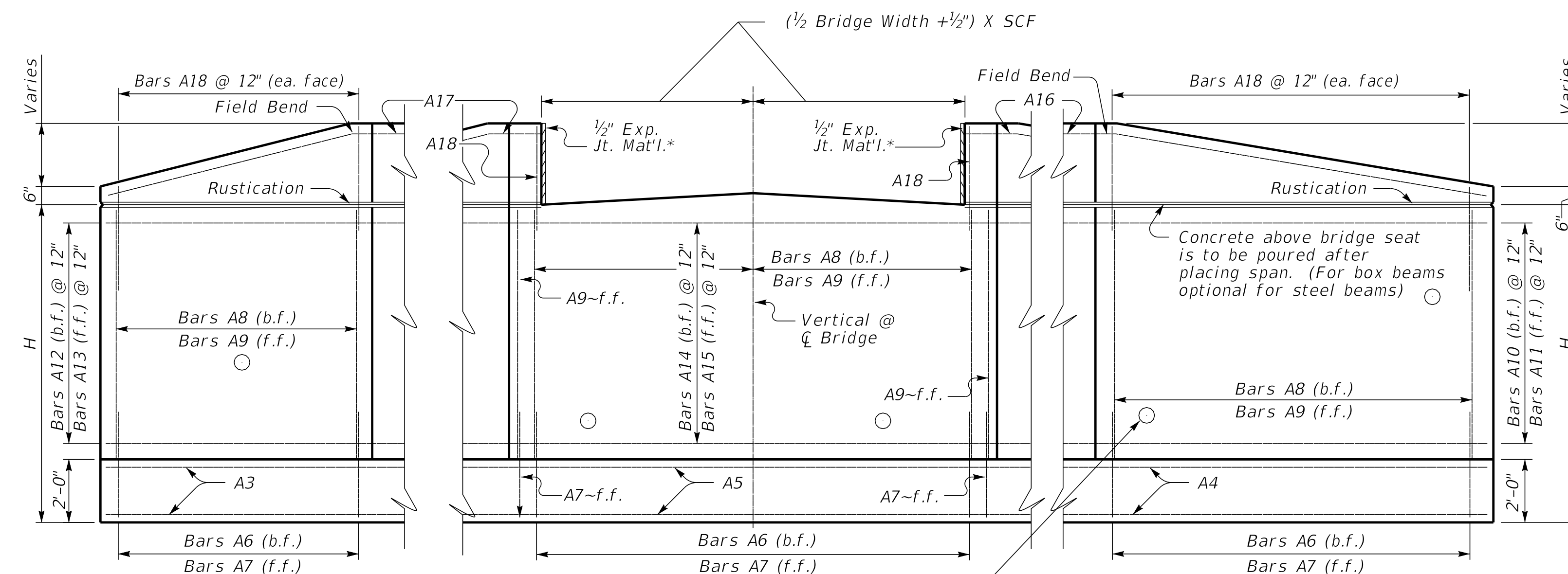
NOTE: Trim A16 & A17 bars if necessary
Trim A3 bars as necessary



WALL SECTION



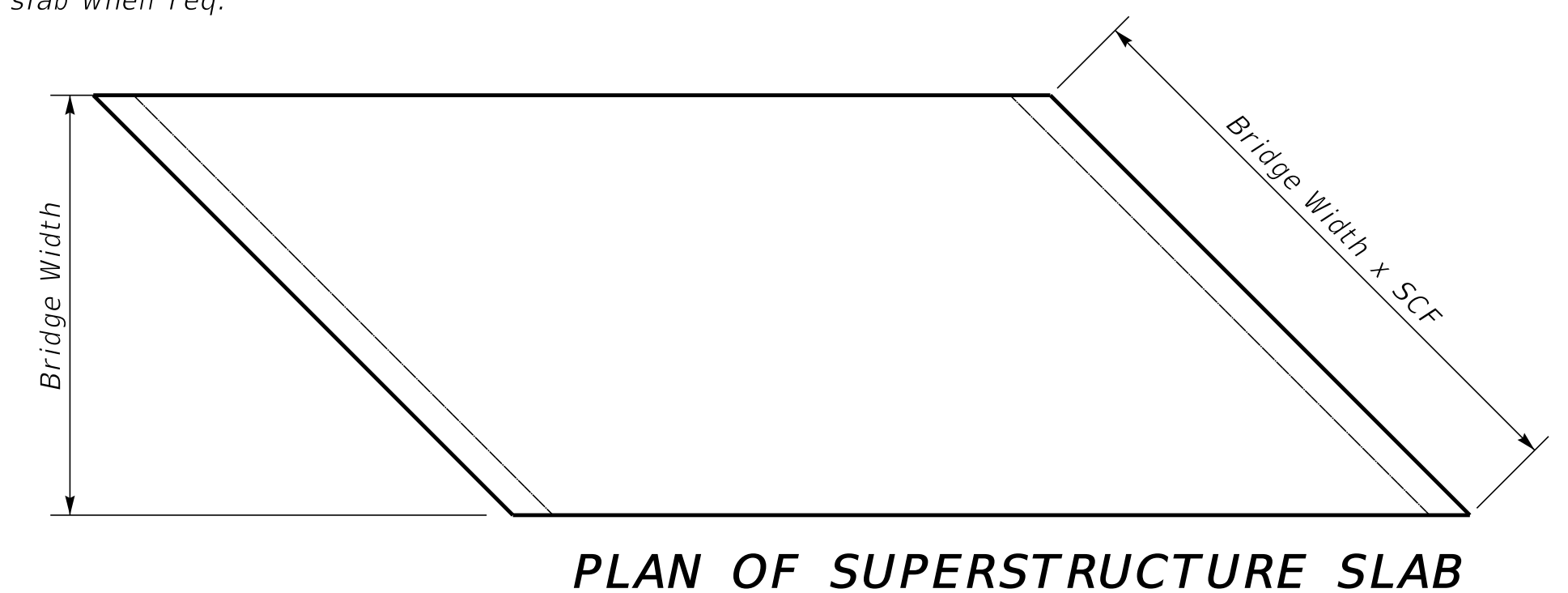
WING SECTION



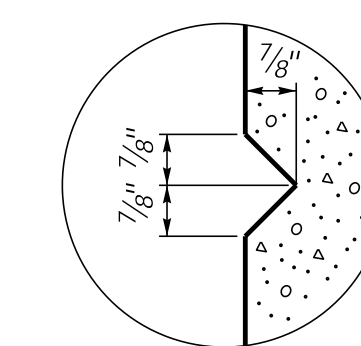
ELEVATION

Place 4" weep hole drains at 8'-0" centers at such elevation as to afford best drainage of backfill, in accordance with the Standard Specifications.

Depth of int. beam, bearing pad, haunch, and slab when req.



PLAN OF SUPERSTRUCTURE SLAB



RUSTICATION GROOVE

*Expansion Joint Material:
AASHTO M153
Type-I Sponge Rubber
Type-II Cork permitted with contractor provided documentation that the Build America Buy America requirements are satisfied.

SUBMITTED *Michael Cost* 10/25/2024
DIVISION DIRECTOR DATE



COMMONWEALTH OF KENTUCKY
DEPARTMENT OF HIGHWAYS



DRAWING TITLE: SEPIA 067 - 40° SKEW VARIABLE WIDTH ABUTMENT 25% SKEWED WINGS

ITEM NO. COUNTY OF

SHEET NO.