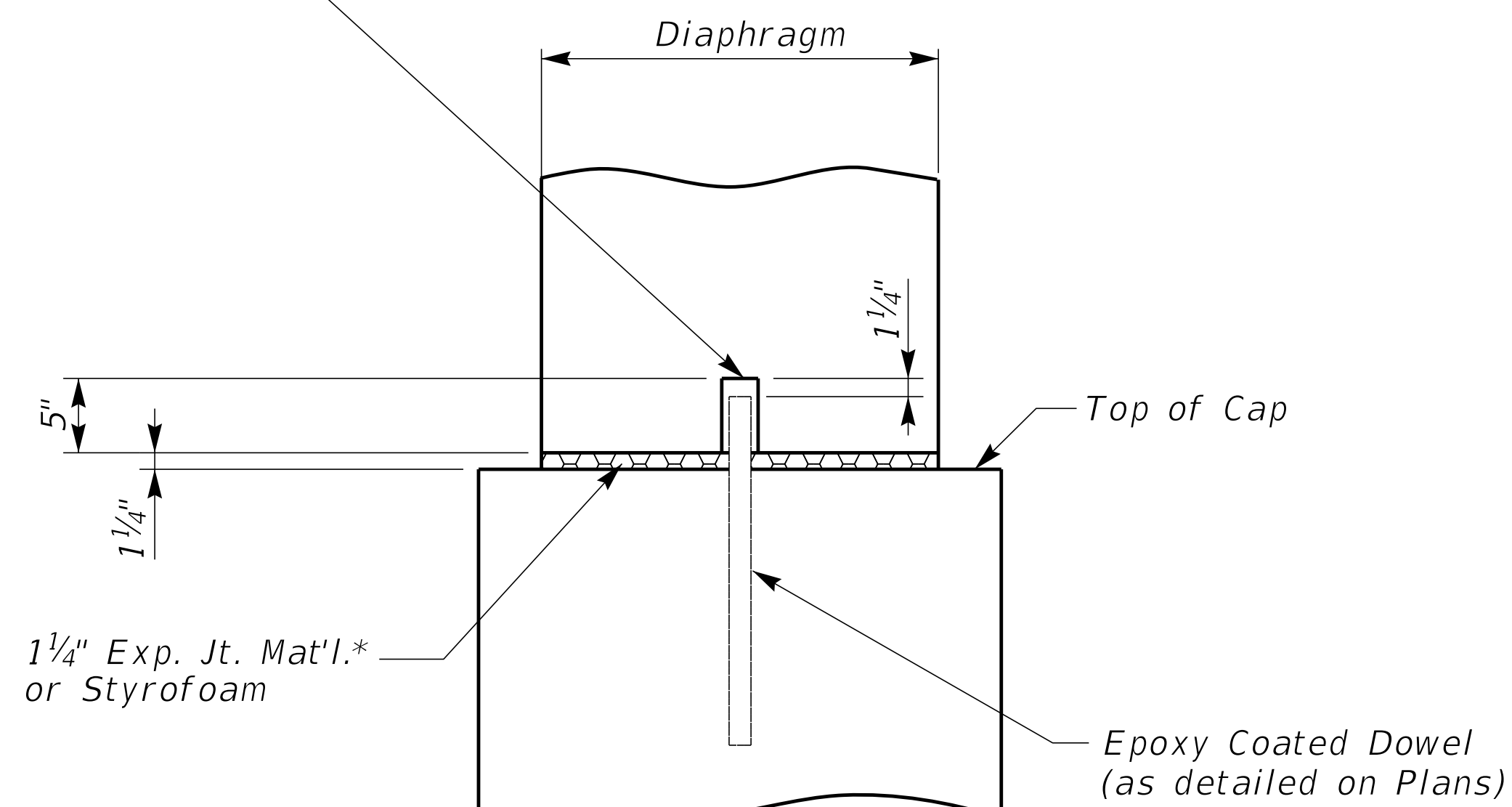
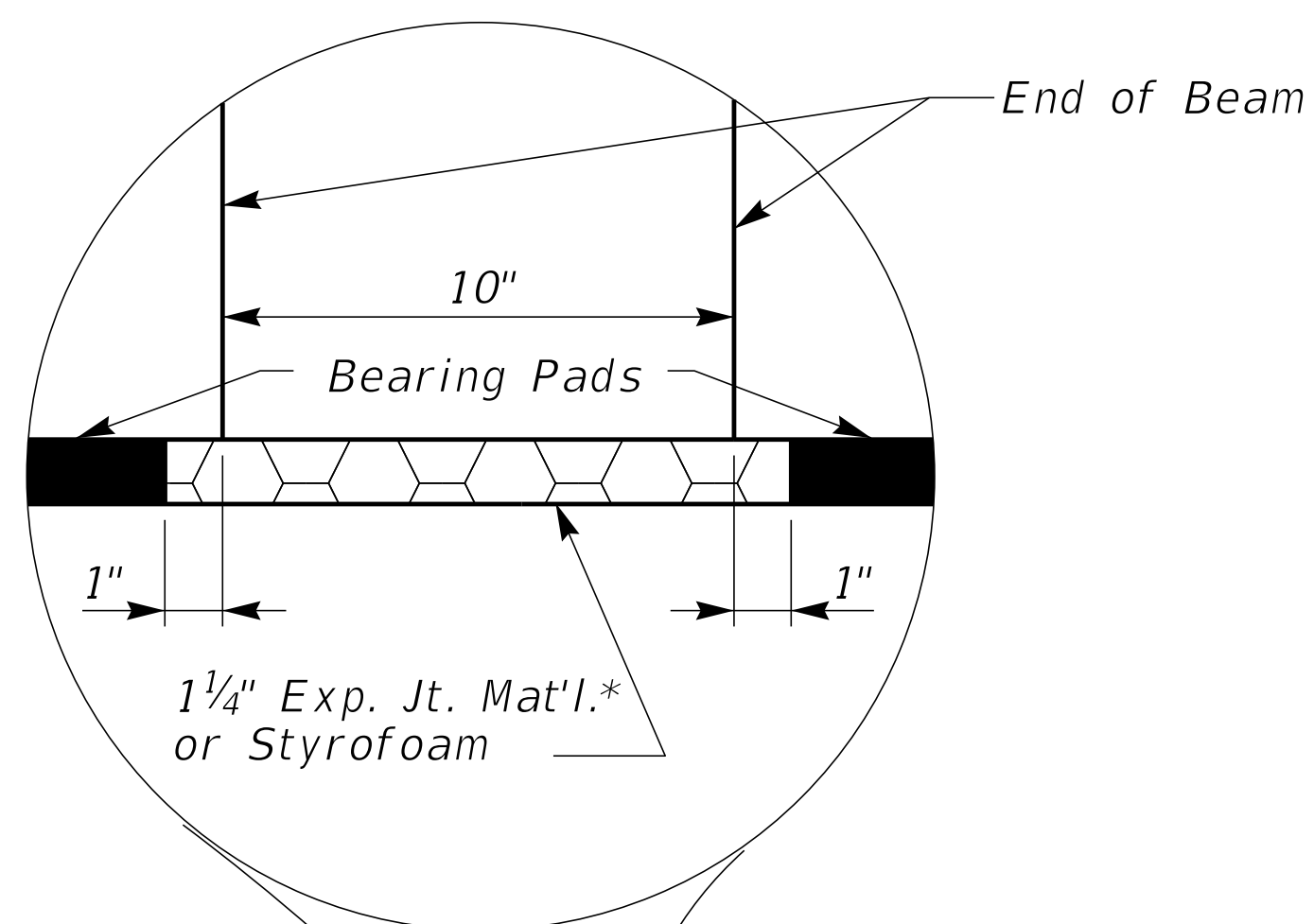


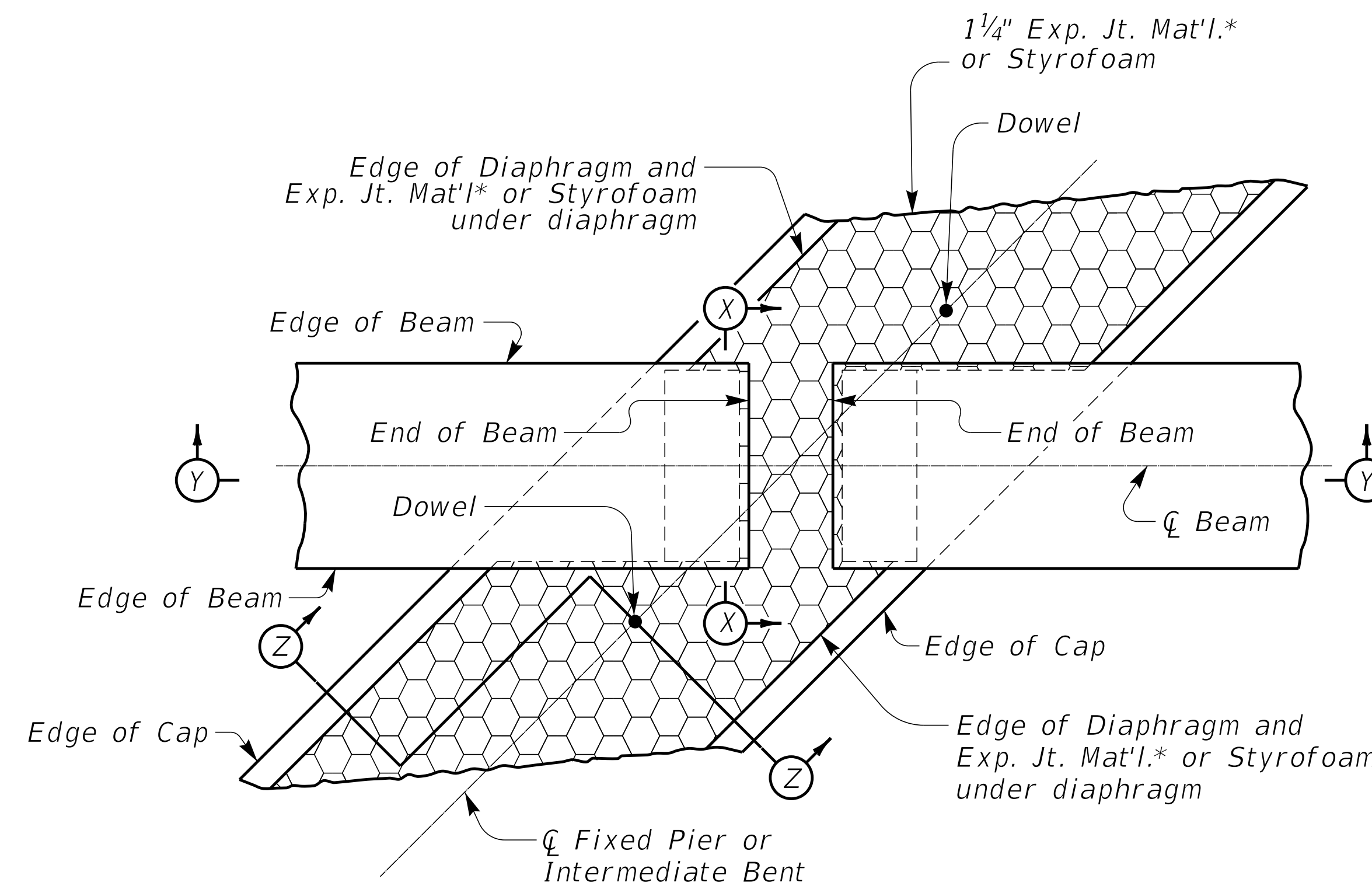
Std. Wt. 2" Commercial Pipe Sleeve closed at one end and 5" long. Secure Pipe Sleeve to prevent floating while placing Concrete. Sleeve is to sit on Exp. Jt. Mat'l.\* or Styrofoam. Pipe Sleeve is to be incidental to Diaphragm Concrete.



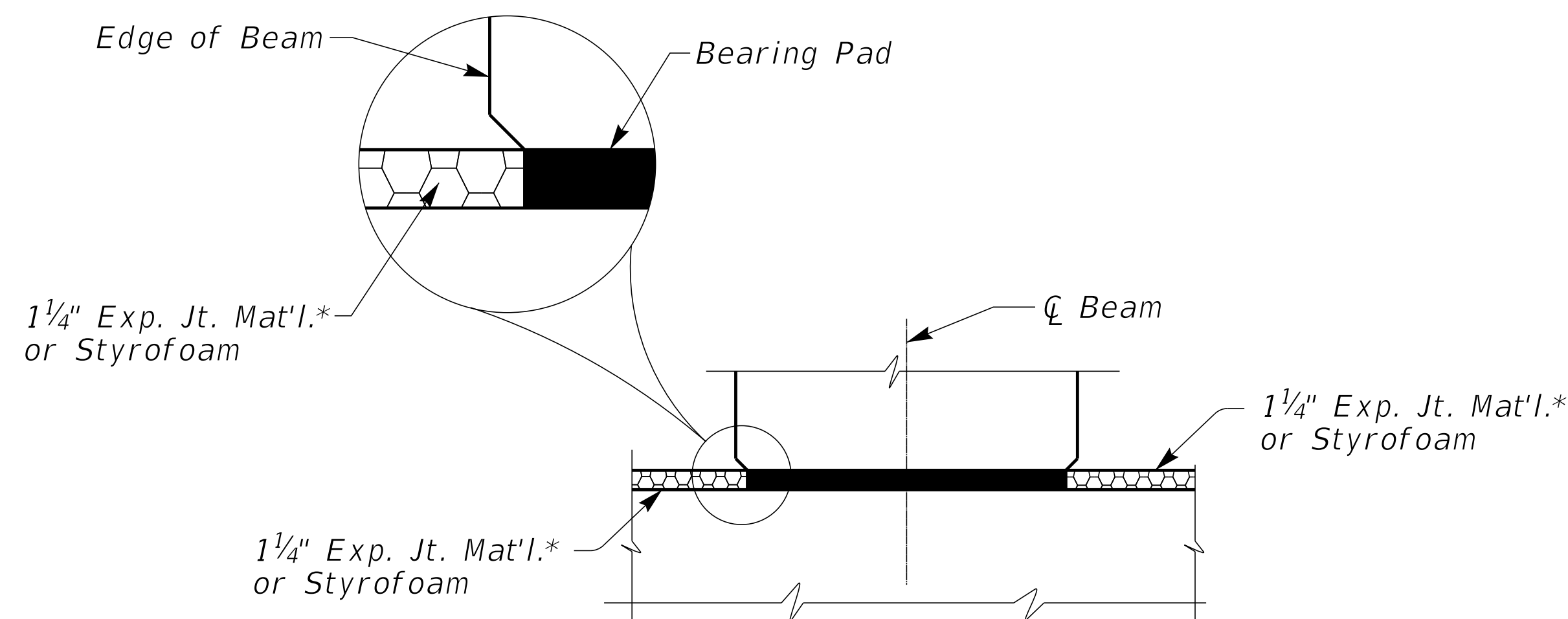
**SECTION Z-Z**



**SECTION Y-Y**



**PLAN**



**SECTION X-X**

\*Expansion Joint Material:  
 AASHTO M153  
 Type-I Sponge Rubber  
 Type-II Cork permitted with contractor provided documentation that the Build America Buy America requirements are satisfied.

SUBMITTED *Michel Cost* 10/25/2024  
 DIVISION DIRECTOR DATE



COMMONWEALTH OF KENTUCKY  
 DEPARTMENT OF HIGHWAYS



DRAWING TITLE: SEPIA 043 - BEARING DETAILS

ITEM NO. COUNTY OF

SHEET NO.