

12'-0" Width x 4'-0" Height

Fill Height (Ft.)	Top Slab										Bottom Slab										Sidewall				Mark "E" Distribution				Quantities			
	TS	J	K	Mark	Type	Length	A	B	C	D	BS	M	N	Mark	Type	Length	A	B	C	D	SW	P	R	Mark	Type	Length	W	X	Y	Z	Concrete CY/LF	Steel LBS/LF
0-2	11"	7	5"	A	1	15-1	12-9	1-2	0-7	13-4	12"	7	5"	B	1	16-1	13-9	1-2	0-7	14-4	10"	5	12"	C	Str	5-6	12"	5	10"	12"	1.26	207
2.01-5	11"	7	5"	A	1	15-1	12-9	1-2	0-7	13-4	12"	7	5"	B	1	16-1	13-9	1-2	0-7	14-4	10"	5	12"	C	Str	5-6	10"	5	12"	12"	1.26	203
5-10	11"	8	5"	A	1	15-2	12-8	1-3	0-8	13-4	12"	8	5"	B	1	16-2	13-8	1-3	0-8	14-4	10"	5	12"	C	Str	5-6	10"	5	12"	12"	1.26	250
10-15	11"	8	5"	A	1	15-2	12-8	1-3	0-8	13-4	12"	8	5"	B	1	16-2	13-8	1-3	0-8	14-4	10"	5	12"	C	Str	5-6	10"	5	12"	12"	1.26	250
15-20	14"	8	5"	A	1	15-2	12-8	1-3	0-8	13-4	15"	8	5"	B	1	16-2	13-8	1-3	0-8	14-4	10"	5	12"	C	Str	6-0	10"	5	12"	12"	1.52	252
20-25	16"	9	6"	A	1	16-2	12-4 1/4	1-11	0-11 3/4	13-4	17"	9	6"	B	1	17-2	13-4 1/4	1-11	0-11 3/4	14-4	10"	5	12"	C	Str	6-4	10"	5	12"	12"	1.70	278
25-30	17"	10	5"	A	1	16-7	12-2 3/4	2-2	1-1 1/4	13-4	18"	10	5"	B	1	17-7	13-2 3/4	2-2	1-1 1/4	14-4	10"	5	12"	C	Str	6-6	10"	5	12"	12"	1.78	405
30-35	19"	11	5"	A	1	17-3	12-5 1/4	2-5	1-2 3/4	13-8	20"	11	5"	B	1	18-3	13-5 1/4	2-5	1-2 3/4	14-8	12"	5	12"	C	Str	6-10	12"	5	12"	12"	2.05	505
35-40	22"	11	5"	A	1	17-9	12-11 1/4	2-5	1-2 3/4	14-2	23"	11	5"	B	1	18-9	13-11 1/4	2-5	1-2 3/4	15-2	15"	5	12"	C	Str	7-4	15"	5	12"	12"	2.46	519

12'-0" Width x 6'-0" Height

Fill Height (Ft.)	Top Slab										Bottom Slab										Sidewall				Mark "E" Distribution				Quantities			
	TS	J	K	Mark	Type	Length	A	B	C	D	BS	M	N	Mark	Type	Length	A	B	C	D	SW	P	R	Mark	Type	Length	W	X	Y	Z	Concrete CY/LF	Steel LBS/LF
0-2	11"	7	5"	A	1	15-1	12-9	1-2	0-7	13-4	12"	7	5"	B	1	16-1	13-9	1-2	0-7	14-4	10"	5	12"	C	Str	7-6	12"	5	10"	12"	1.38	215
2.01-5	11"	7	5"	A	1	15-1	12-9	1-2	0-7	13-4	12"	7	5"	B	1	16-1	13-9	1-2	0-7	14-4	10"	5	12"	C	Str	7-6	10"	5	12"	12"	1.38	211
5-10	11"	8	5"	A	1	15-2	12-8	1-3	0-8	13-4	12"	8	5"	B	1	16-2	13-8	1-3	0-8	14-4	10"	5	12"	C	Str	7-6	10"	5	12"	12"	1.38	259
10-15	11"	8	5"	A	1	15-2	12-8	1-3	0-8	13-4	12"	8	5"	B	1	16-2	13-8	1-3	0-8	14-4	10"	5	12"	C	Str	7-6	10"	5	12"	12"	1.38	259
15-20	14"	8	5"	A	1	15-2	12-8	1-3	0-8	13-4	15"	8	5"	B	1	16-2	13-8	1-3	0-8	14-4	10"	5	10"	C	Str	8-0	10"	5	12"	12"	1.64	263
20-25	16"	9	5"	A	1	16-2	12-4 1/4	1-11	0-11 3/4	13-4	17"	9	5"	B	1	17-2	13-4 1/4	1-11	0-11 3/4	14-4	10"	5	9"	C	Str	8-4	10"	5	12"	12"	1.82	337
25-30	18"	10	5"	A	1	16-11	12-6 3/4	2-2	1-1 1/4	13-8	19"	10	5"	B	1	17-11	13-6 3/4	2-2	1-1 1/4	14-8	12"	5	9"	C	Str	8-8	12"	5	12"	12"	2.11	427
30-35	20"	11	5"	A	1	17-3	12-5 1/4	2-5	1-2 3/4	13-8	21"	11	5"	B	1	18-3	13-5 1/4	2-5	1-2 3/4	14-8	12"	5	8"	C	Str	9-0	12"	5	12"	12"	2.29	523
35-40	23"	11	5"	A	1	17-9	12-11 1/4	2-5	1-2 3/4	14-2	24"	11	5"	B	1	18-9	13-11 1/4	2-5	1-2 3/4	15-2	15"	5	8"	C	Str	9-6	15"	5	12"	12"	2.74	537

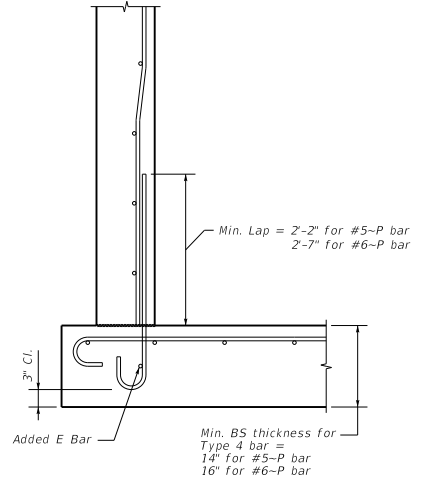
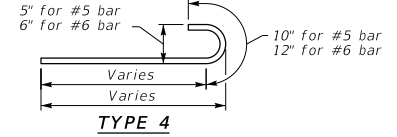
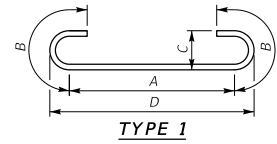
12'-0" Width x 8'-0" Height

Fill Height (Ft.)	Top Slab										Bottom Slab										Sidewall				Mark "E" Distribution				Quantities			
	TS	J	K	Mark	Type	Length	A	B	C	D	BS	M	N	Mark	Type	Length	A	B	C	D	SW	P	R	Mark	Type	Length	W	X	Y	Z	Concrete CY/LF	Steel LBS/LF
0-2	11"	7	5"	A	1	15-1	12-9	1-2	0-7	13-4	12"	7	5"	B	1	16-1	13-9	1-2	0-7	14-4	10"	5	12"	C	Str	9-6	12"	5	10"	12"	1.51	223
2.01-5	11"	7	5"	A	1	15-1	12-9	1-2	0-7	13-4	12"	7	5"	B	1	16-1	13-9	1-2	0-7	14-4	10"	5	12"	C	Str	9-6	10"	5	12"	12"	1.51	219
5-10	11"	8	5"	A	1	15-2	12-8	1-3	0-8	13-4	12"	8	5"	B	1	16-2	13-8	1-3	0-8	14-4	10"	5	10"	C	Str	9-6	10"	5	12"	12"	1.51	271
10-15	11"	8	5"	A	1	15-2	12-8	1-3	0-8	13-4	12"	8	5"	B	1	16-2	13-8	1-3	0-8	14-4	10"	5	9"	C	Str	9-6	10"	5	12"	12"	1.51	274
15-20	14"	8	5"	A	1	15-2	12-8	1-3	0-8	13-4	15"	8	5"	B	1	16-2	13-8	1-3	0-8	14-4	10"	5	7"	C	Str	10-0	10"	5	12"	12"	1.77	283
20-25	17"	8	5"	A	1	15-2	12-8	1-3	0-8	13-4	18"	8	5"	B	1	16-2	13-8	1-3	0-8	14-4	10"	5	6"	C	Str	10-6	10"	5	12"	12"	2.03	291
25-30	18"	11	5"	A	1	16-11	12-6 3/4	2-5	1-2 3/4	13-8	19"	11	5"	B	1	18-3	13-5 1/4	2-5	1-2 3/4	14-8	12"	5	7"	C	Str	10-8	12"	5	12"	12"	2.25	537
30-35	20"	11	5"	A	1	17-3	12-5 1/4	2-5	1-2 3/4	13-8	21"	11	5"	B	1	18-3	13-5 1/4	2-5	1-2 3/4	14-8	12"	5	5"	C	Str	11-0	12"	5	12"	12"	2.43	554
35-40	23"	11	5"	A	1	17-9	12-11 1/4	2-5	1-2 3/4	14-2	24"	11	5"	B	1	18-9	13-11 1/4	2-5	1-2 3/4	15-2	15"	5	6"	C	Str	11-6	15"	5	12"	12"	2.92	560

12'-0" Width x 10'-0" Height

Fill Height (Ft.)	Top Slab										Bottom Slab										Sidewall				Mark "E" Distribution				Quantities			
	TS	J	K	Mark	Type	Length	A	B	C	D	BS	M	N	Mark	Type	Length	A	B	C	D	SW	P	R	Mark	Type	Length	W	X	Y	Z	Concrete CY/LF	Steel LBS/LF
0-2	11"	7	5"	A	1	15-1	12-9	1-2	0-7	13-4	12"	7	5"	B	1	16-1	13-9	1-2	0-7	14-4	10"	5	11"	C	Str	11-6	12"	5	10"	12"	1.63	234
2.01-5	11"	7	5"	A	1	15-1	12-9	1-2	0-7	13-4	12"	7	5"	B	1	16-1	13-9	1-2	0-7	14-4	10"	5	9"	C	Str	11-6	10"	5	12"	12"	1.63	236
5-10	11"	8	5"	A	1	15-2	12-8	1-3	0-8	13-4	12"	8	5"	B	1	16-2	13-8	1-3	0-8	14-4	10"	5	7"	C	Str	11-6	10"	5	12"	12"	1.63	293
10-15	12"	8	5"	A	1	15-2	12-8	1-3	0-8	13-4	13"	8	5"	B	1	16-2	13-8	1-3	0-8	14-4	10"	5	6"	C	Str	11-8	10"	5	12"	12"	1.72	300
15-20	15"	8	5"	A	1	15-6	13-0	1-3	0-8	13-8	16"	8	5"	B	1	16-6	14-0	1-3	0-8	14-8	12"	6	8"	C	Str	12-2	12"	5	12"	12"	2.13	311
20-25	17"	10	7"	A	1	16-11	12-6 3/4	2-2	1-1 1/4	13-8	18"	10	7"	B	1	17-11	13-6 3/4	2-2	1-1 1/4	14-8	12"	6	7"	C	Str	12-6	12"	5	12"	12"	2.31	372
25-30	18"	11	5"	A	1	17-9	12-11 1/4	2-5	1-2 3/4	14-2	19"	11	5"	B	1	18-9	13-11 1/4	2-5	1-2 3/4	15-2	15"	6	8"	C	Str	12-8	15"	5	12"	12"	2.65	573
30-35	21"	11	5"	A	1	17-9	12-11 1/4	2-5	1-2 3/4	14-2	22"	11	5"	B	1	18-9	13-11 1/4	2-5	1-2 3/4	15-2	15"	6	7"	C	Str	13-2	15"	5	12"	12"	2.92	584
35-40	24"	11	5"	A	1	18-3	13-5 1/4	2-5	1-2 3/4	14-8	25"	11	5"	B	1	19-3	14-5 1/4	2-5	1-2 3/4	15-8	18"	6	7"	C	Str	13-8	18"	5	12"	12"	3.46	599

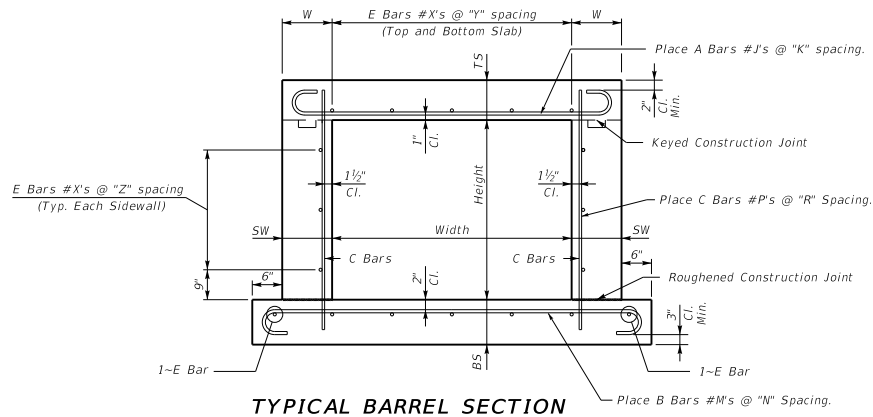
NOTE:
A & B bars may need to be rotated to maintain shown clearances.



OPTIONAL HOOK DETAIL

NOTE:
The contractor will not be paid additionally if optional hook detail is used.

NOTE:
Bar Dimensions are per bar.



TYPICAL BARREL SECTION

KENTUCKY
DEPARTMENT OF HIGHWAYS

STANDARD CULVERT
12' - 0" WIDTH

STANDARD DRAWING NO. BSC-005

SUBMITTED DATE 02-26-20

DIRECTOR DIVISION OF STRUCTURAL DESIGN

APPROVED DATE 02-26-20

STATE ENGINEER