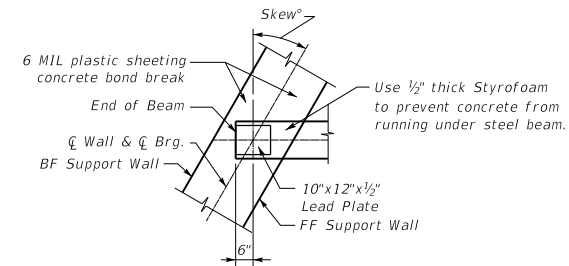


\* 0° skew, 0"  
 15° skew, 0'-6 3/8"  
 30° skew, 1'-1 1/8"  
 45° skew, 2'-0"

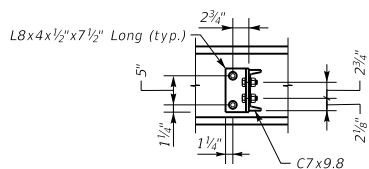
**NOTE:** Place girders with any mill or shop camber bowed up in the middle. Heat cambering is not required.



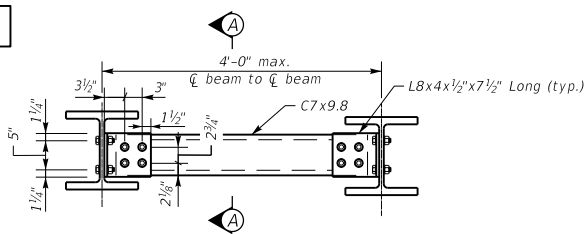
**END OF BEAM DETAIL @ SUPPORTS**

**FRAMING PLAN**

**NOTE:** Use 3/4" O Bolts with 1 3/16" O Holes Throughout.

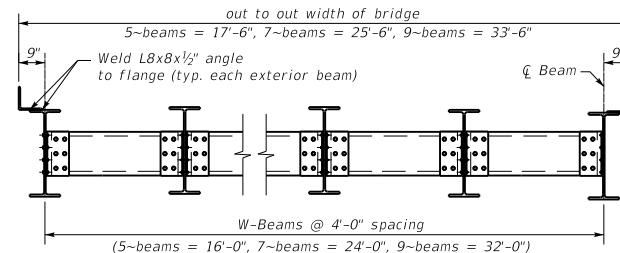


**SECTION A-A**



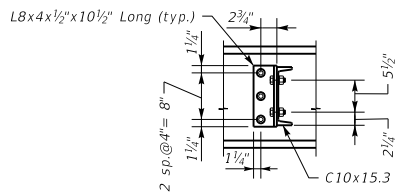
**INTERMEDIATE DIAPHRAGM**

(for up to 14" beam depth)

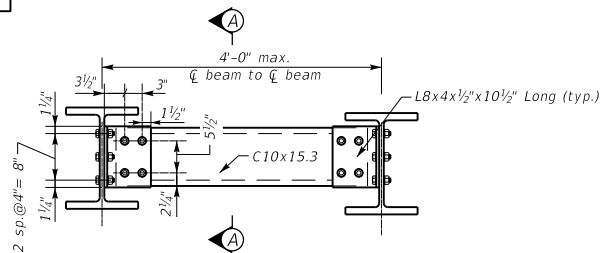


**FRAMING TYPICAL**

**NOTE:** Use 3/4" O Bolts with 1 3/16" O Holes Throughout.



**SECTION A-A**



**INTERMEDIATE DIAPHRAGM**

(for up to 20" beam depth)

KENTUCKY  
 DEPARTMENT OF HIGHWAYS  
 ROLLED STEEL  
 DIAPHRAGM  
 DETAILS

STANDARD DRAWING NO. BSB-004  
 SUBMITTED BY *Bob Adams* DATE 02-26-20  
 DIRECTOR DIVISION OF STRUCTURAL DESIGN  
 APPROVED BY *Bob Adams* DATE 02-26-20  
 STATE ENGINEER