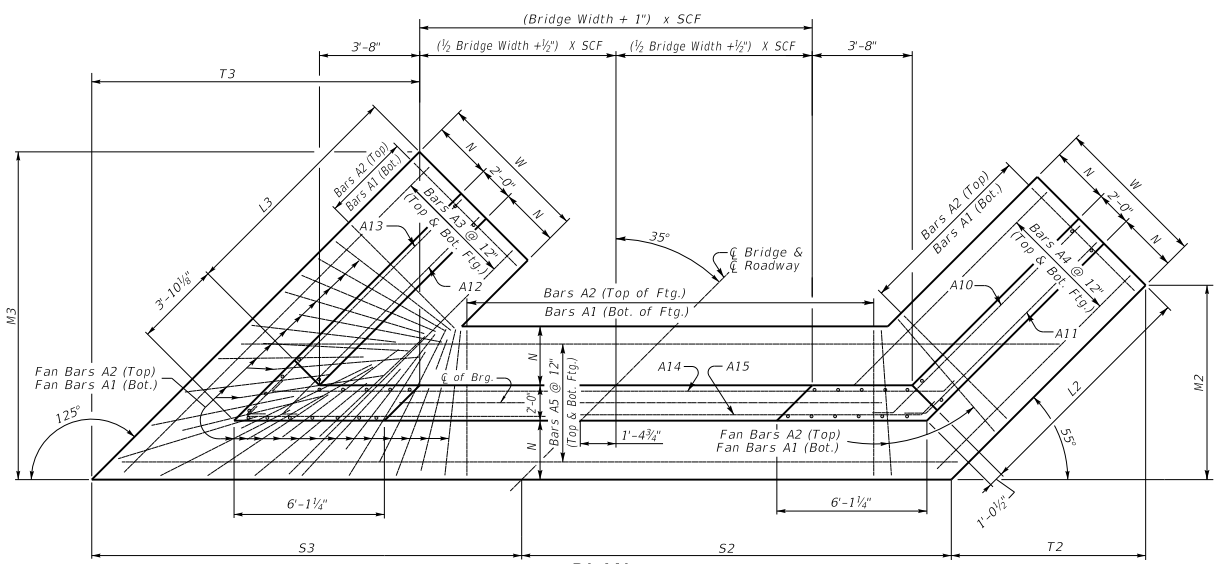
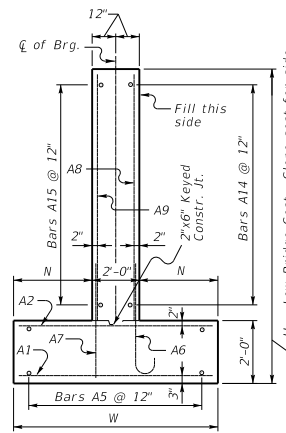


# 35° SKEW VARIABLE BRIDGE WIDTH 2:1 FILL SLOPES WINGS PARALLEL TO ROADWAY

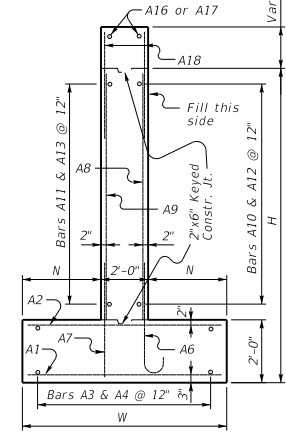
ABUTMENT SKEW CORRECTION FACTOR (SCF) = 1.221



**PLAN** (Left Skew as shown; right skew opp. hand) **NOTE:** Trim A16 & A17 bars if necessary. Trim A3 bars as necessary.

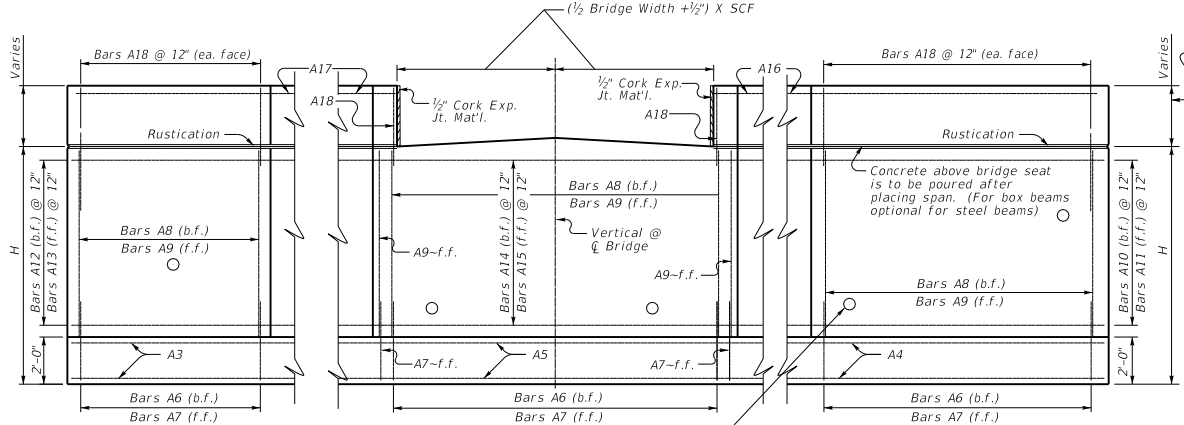


**WALL SECTION**

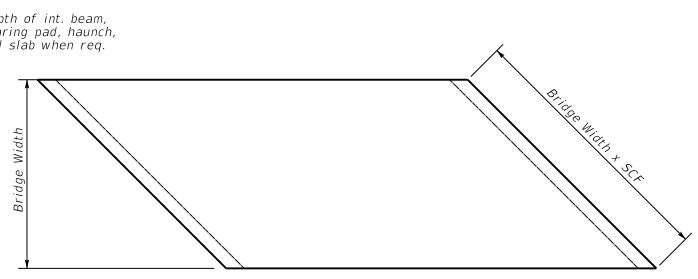


**WING SECTION**

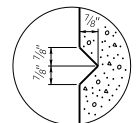
For fanning A1 & A2 bars with an acute angle, space @ 12" at face of toe, then as you get closer to the corner start pulling every other bar back toward the heel. (Similar to as shown)



**ELEVATION**



**PLAN OF SUPERSTRUCTURE SLAB**



**RUSTICATION GROOVE**

KENTUCKY DEPARTMENT OF HIGHWAYS	
35° SKEW VARIABLE WIDTH ABUTMENT PARALLEL WINGS	
STANDARD DRAWING NO. BSA-055	
SUBMITTED	02-26-20
DATE	
DIRECTOR DIVISION OF STRUCTURAL DESIGN	
APPROVED	02-26-20
DATE	
STATE ENGINEER	