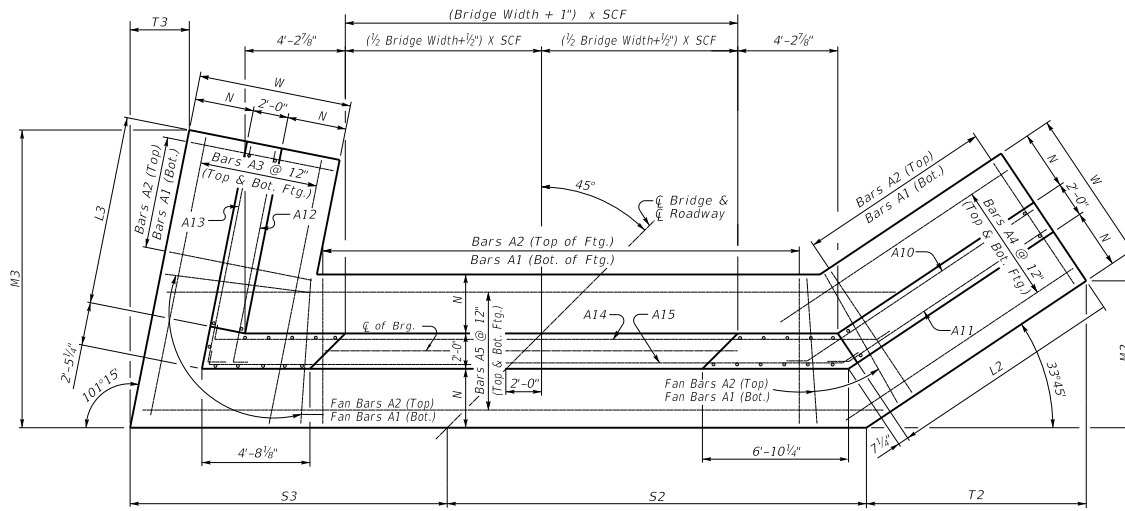


45° SKEW VARIABLE BRIDGE WIDTH 2:1 FILL SLOPES WINGS SKEWED 25% FROM ROADWAY TO BREASTWALL

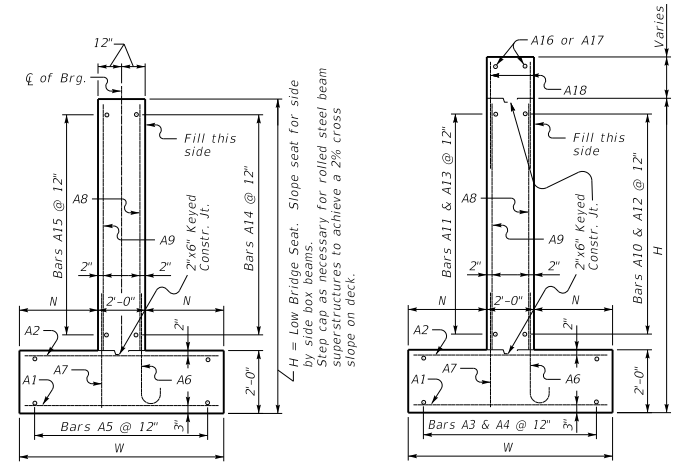
ABUTMENT SKEW CORRECTION FACTOR (SCF) = 1.414



(Left Skew as shown; right skew opp. hand)

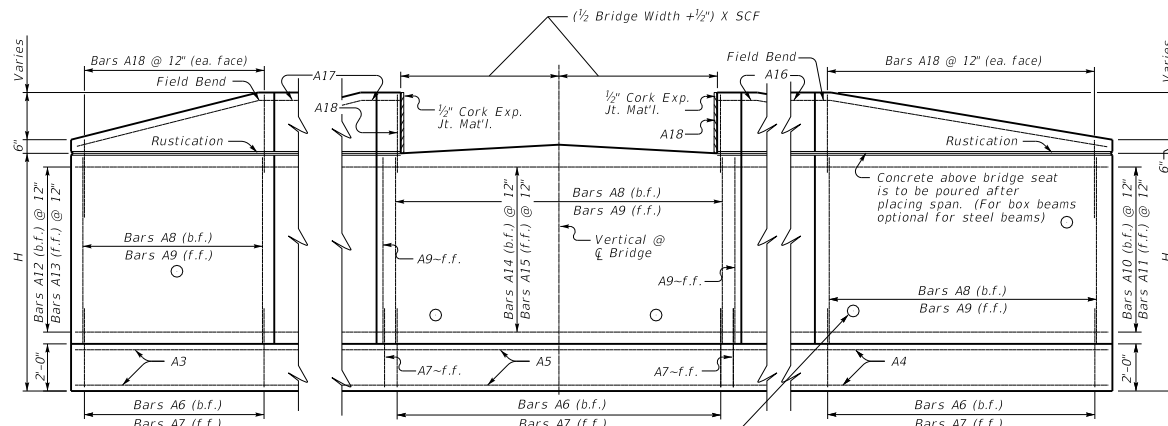
PLAN

NOTE: Trim A16 & A17 bars if necessary
Trim A3 bars as necessary

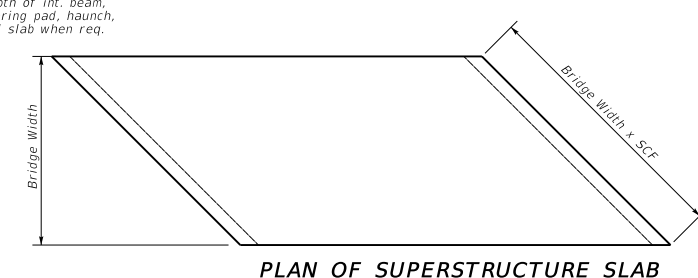


WALL SECTION

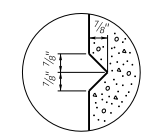
WING SECTION



ELEVATION



PLAN OF SUPERSTRUCTURE SLAB



RUSTICATION GROOVE

Place 4" weep hole drains at 8'-0" centers at such elevation as to afford best drainage of backfill, in accordance with the Standard Specifications.

KENTUCKY
DEPARTMENT OF HIGHWAYS

45° SKEW VARIABLE
WIDTH ABUTMENT
25% SKEWED WINGS

STANDARD DRAWING NO. BSA-039

SUBMITTED: *Boyd Adams* DATE: 02-26-20
DIRECTOR DIVISION OF STRUCTURAL DESIGN

APPROVED: *Boyd Adams* DATE: 02-26-20
STATE ENGINEER