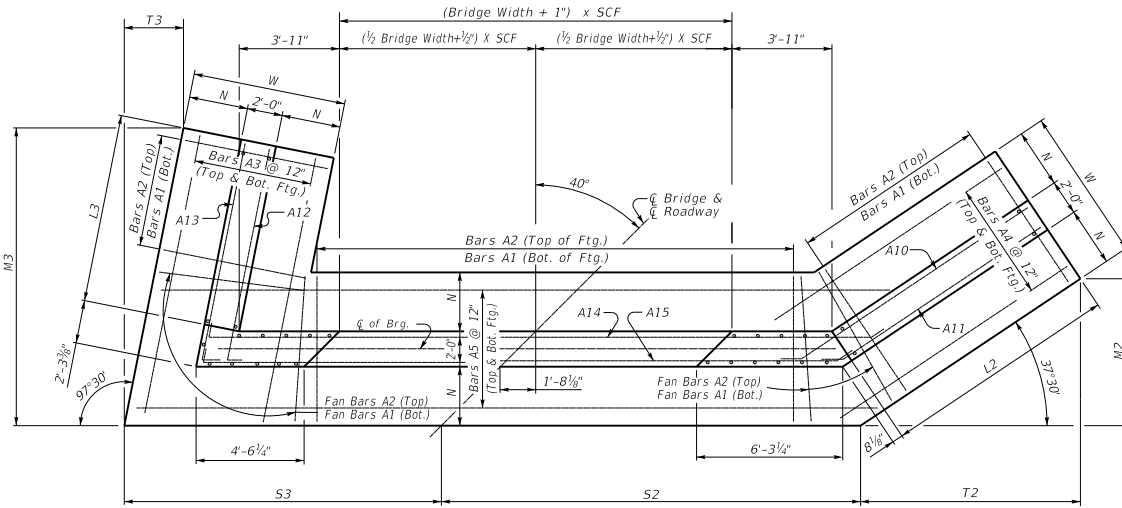


40° SKEW VARIABLE BRIDGE WIDTH 2:1 FILL SLOPES WINGS SKEWED 25% FROM ROADWAY TO BREASTWALL

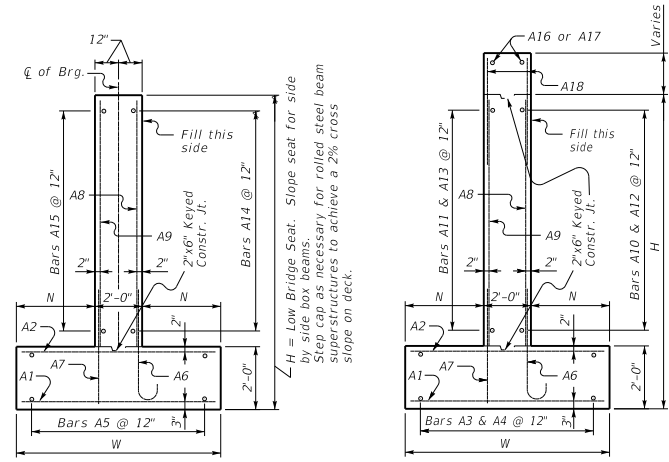
ABUTMENT SKEW CORRECTION FACTOR (SCF) = 1.305



(Left Skew as shown; right skew opp. hand)

PLAN

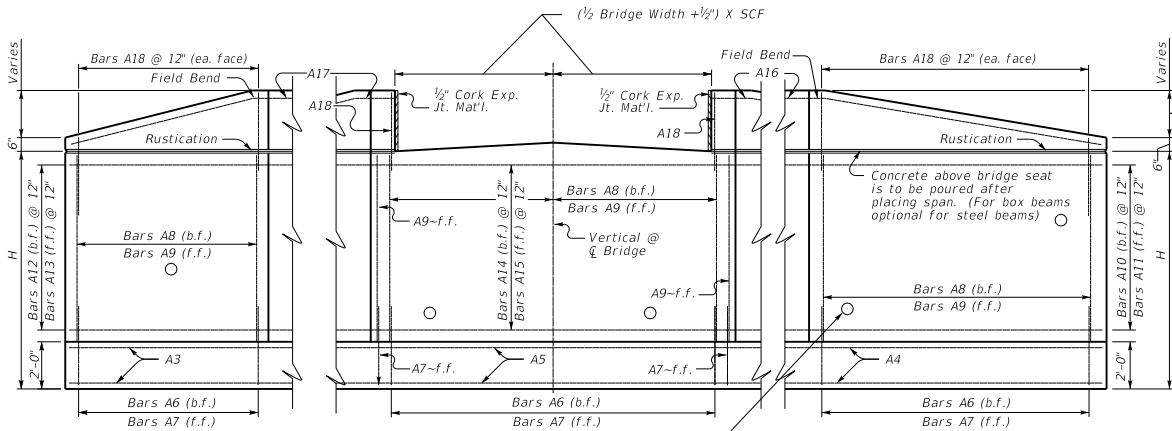
NOTE: Trim A16 & A17 bars if necessary
Trim A3 bars as necessary



WALL SECTION

WING SECTION

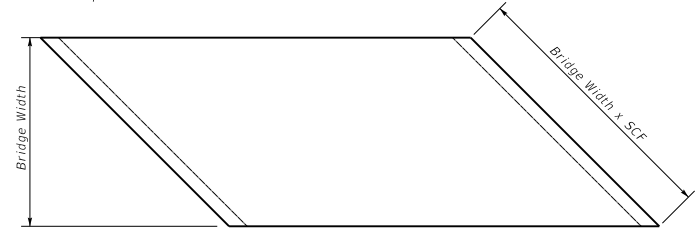
H = Low Bridge Seat. Slope seat for side by side box beams. Step cap as necessary for rolled steel beam superstructures to achieve a 2% cross slope on deck.



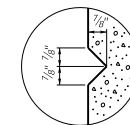
ELEVATION

Place 4" weep hole drains at 8'-0" centers at such elevation as to afford best drainage of backfill, in accordance with the Standard Specifications.

Depth of int. beam, bearing pad, haunch, and slab when req.



PLAN OF SUPERSTRUCTURE SLAB



RUSTICATION GROOVE

KENTUCKY
DEPARTMENT OF HIGHWAYS

40° SKEW VARIABLE
WIDTH ABUTMENT
25% SKEWED WINGS

STANDARD DRAWING NO. BSA-037

SUBMITTED *Boyd Adams* 02-26-20
DATE

APPROVED DIRECTOR DIVISION OF STRUCTURAL DESIGN 02-26-20
DATE

APPROVED STATE REGISTERED ENGINEER 02-26-20
DATE