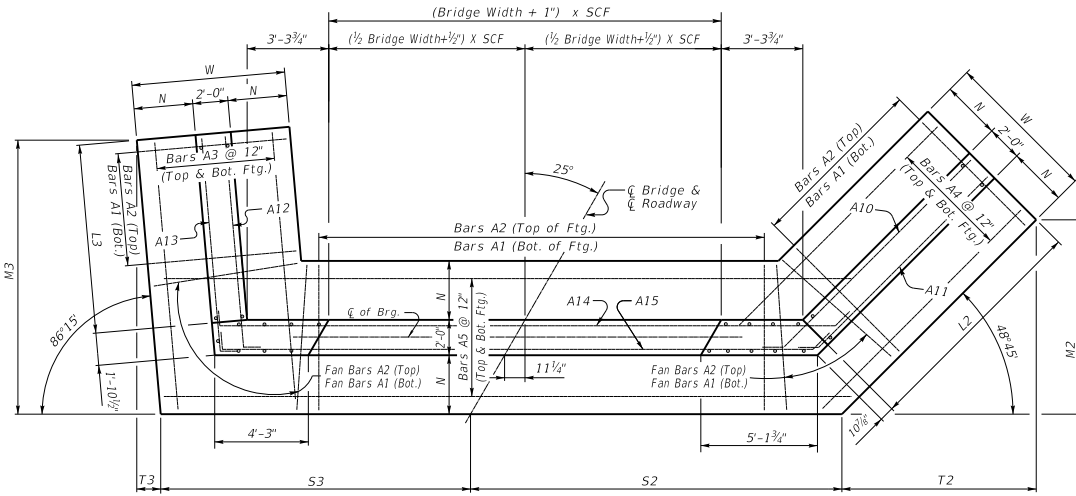


25° SKEW VARIABLE BRIDGE WIDTH 2:1 FILL SLOPES WINGS SKEWED 25% FROM ROADWAY TO BREASTWALL

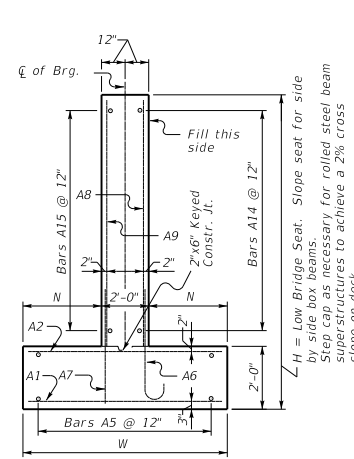
ABUTMENT SKEW CORRECTION FACTOR (SCF) = 1.103



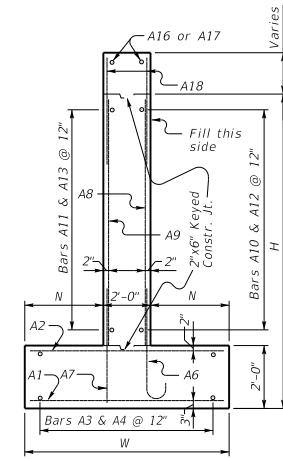
(Left Skew as shown; right skew opp. hand)

PLAN

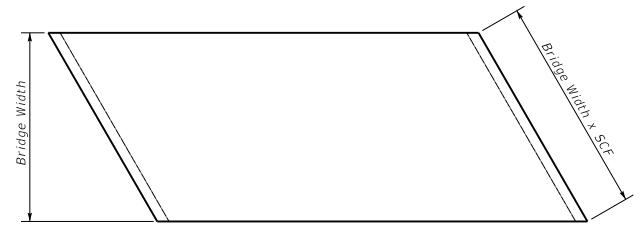
NOTE: Trim A16 & A17 bars if necessary



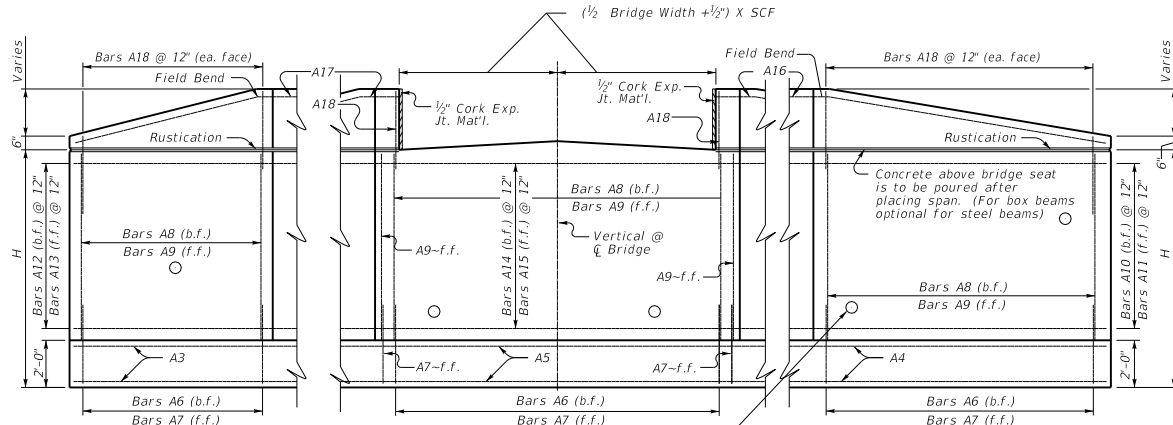
WALL SECTION



WING SECTION

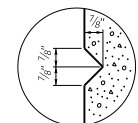


PLAN OF SUPERSTRUCTURE SLAB



ELEVATION

Place 4" weep hole drains at 8'-0" centers at such elevation as to afford best drainage of backfill, in accordance with the Standard Specifications.



RUSTICATION GROOVE

Depth of int. beam, bearing pad, haunch, and slab when req.

KENTUCKY DEPARTMENT OF HIGHWAYS	
25° SKEW VARIABLE WIDTH ABUTMENT 25% SKEWED WINGS	
STANDARD DRAWING NO. BSA-031	
SUBMITTED <i>Boyd Adams</i>	DATE 02-26-20
APPROVED _____ STATE HIGHWAY ENGINEER	DATE 02-26-20