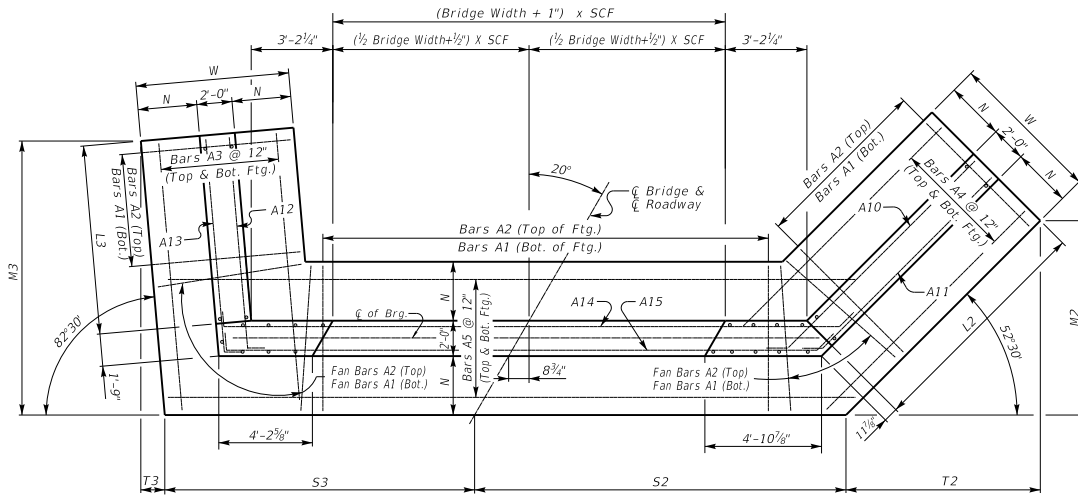


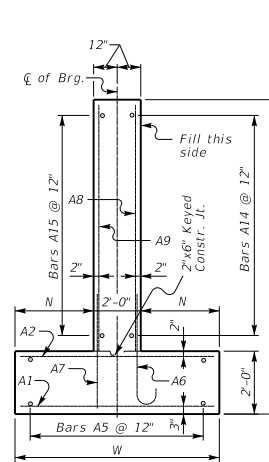
# 20° SKEW VARIABLE BRIDGE WIDTH 2:1 FILL SLOPES WINGS SKEWED 25% FROM ROADWAY TO BREASTWALL

ABUTMENT SKEW CORRECTION FACTOR (SCF) = 1.064



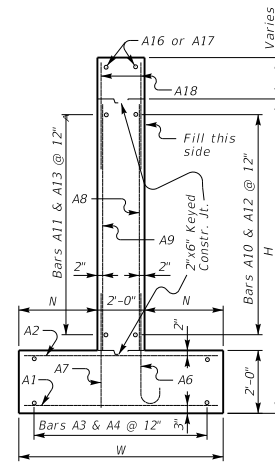
(Left Skew as shown; right skew opp. hand)

**PLAN**



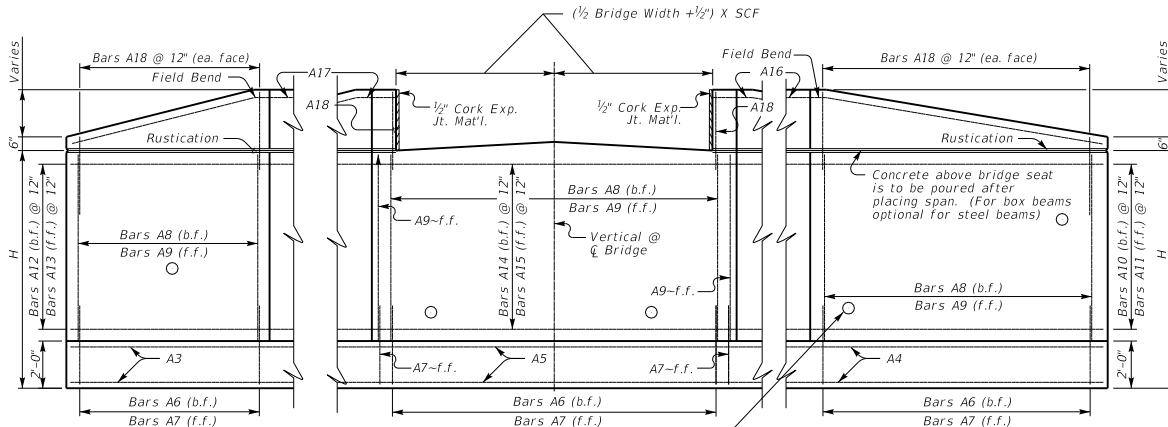
**WALL SECTION**

U = Low Bridge Seat. Slope seat for side of bridge. Steel cap as necessary for rolled steel beam superstructures to achieve a 2% cross slope on deck.



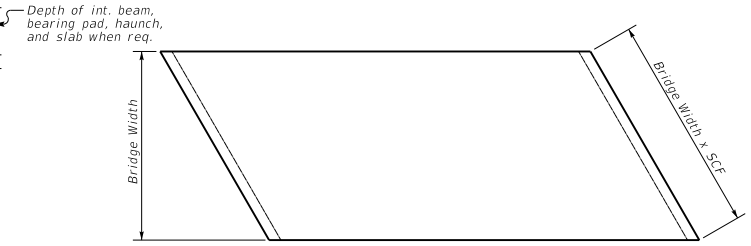
**WING SECTION**

NOTE: Trim A16 & A17 bars if necessary

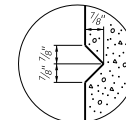


**ELEVATION**

Place 4" weep hole drains at 8'-0" centers at this elevation as to afford best drainage of backfill, in accordance with the Standard Specifications.



**PLAN OF SUPERSTRUCTURE SLAB**



**RUSTICATION GROOVE**

KENTUCKY  
DEPARTMENT OF HIGHWAYS  
20° SKEW VARIABLE  
WIDTH ABUTMENT  
25% SKEWED WINGS

STANDARD DRAWING NO. BSA-029  
SUBMITTED *Boyd Adams* 02-26-20  
DATE DIRECTOR DIVISION OF STRUCTURAL DESIGN  
APPROVED *Boyd Adams* 02-26-20  
DATE STATE ENGINEER