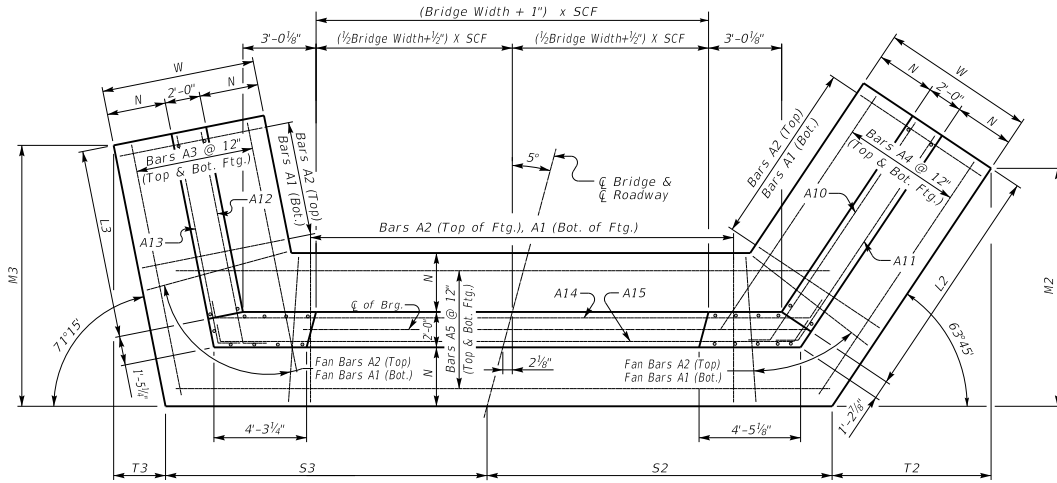


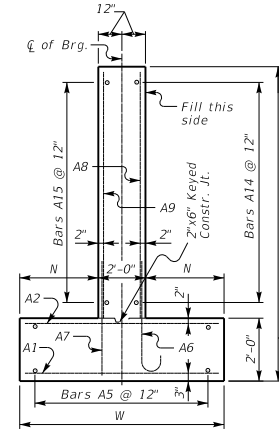
5° SKEW VARIABLE BRIDGE WIDTH 2:1 FILL SLOPES WINGS SKEWED 25% FROM ROADWAY TO BREASTWALL

ABUTMENT SKEW CORRECTION FACTOR (SCF) = 1.004

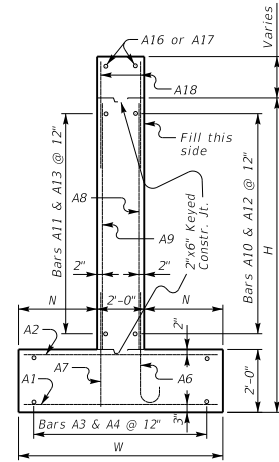


(Left Skew as shown; right skew opp. hand)

PLAN

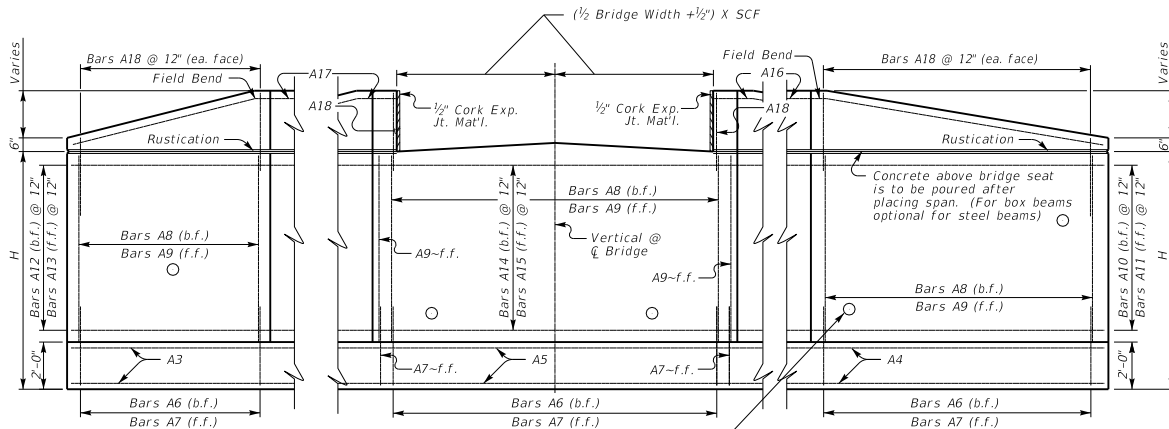


WALL SECTION



WING SECTION

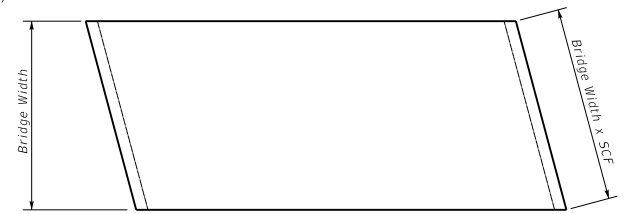
NOTE: Trim A16 & A17 bars if necessary



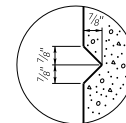
ELEVATION

Place 4" weep hole drains at 8'-0" centers at such elevation as to afford best drainage of backfill, in accordance with the Standard Specifications.

Depth of int. beam, bearing pad, haunch, and slab when req.



PLAN OF SUPERSTRUCTURE SLAB



**RUSTICATION
GROOVE**

KENTUCKY
DEPARTMENT OF HIGHWAYS

5° SKEW VARIABLE
WIDTH ABUTMENT
25% SKEWED WINGS

STANDARD DRAWING NO. BSA-023

SUBMITTED *Boyd Adams* 02-26-20
DATE DIRECTOR DIVISION OF STRUCTURAL DESIGN

APPROVED *Boyd Adams* 02-26-20
DATE STATE ENGINEER