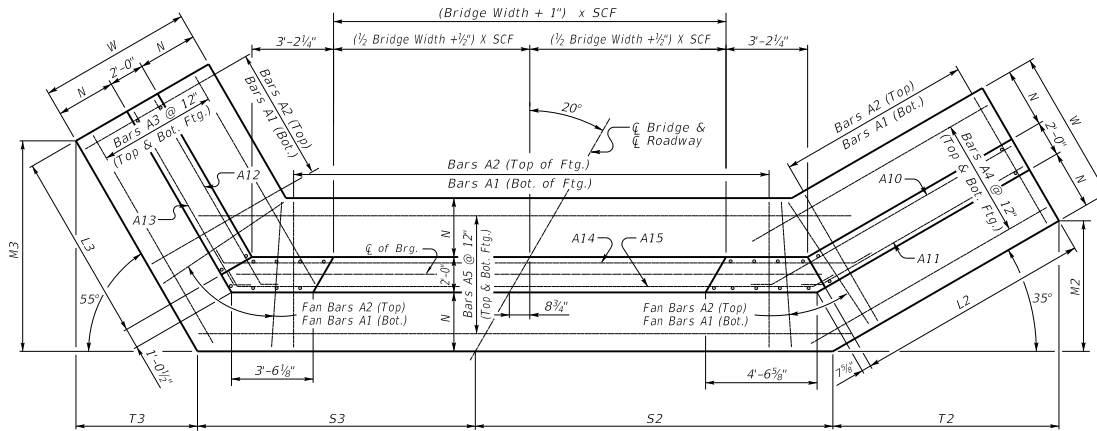


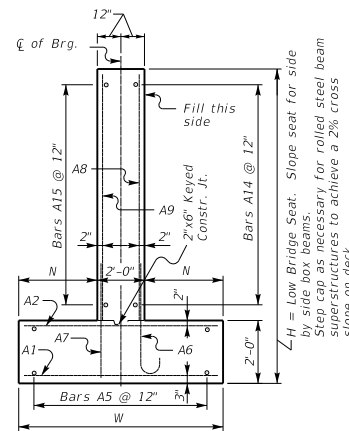
20° SKEW VARIABLE BRIDGE WIDTH 2:1 FILL SLOPES WINGS SKEWED 50% FROM ROADWAY TO BREASTWALL

ABUTMENT SKEW CORRECTION FACTOR (SCF) = 1.064

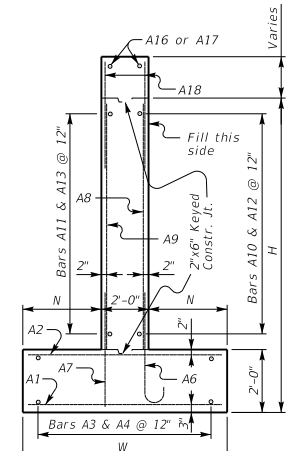


(Left Skew as shown; right skew opp. hand)

PLAN

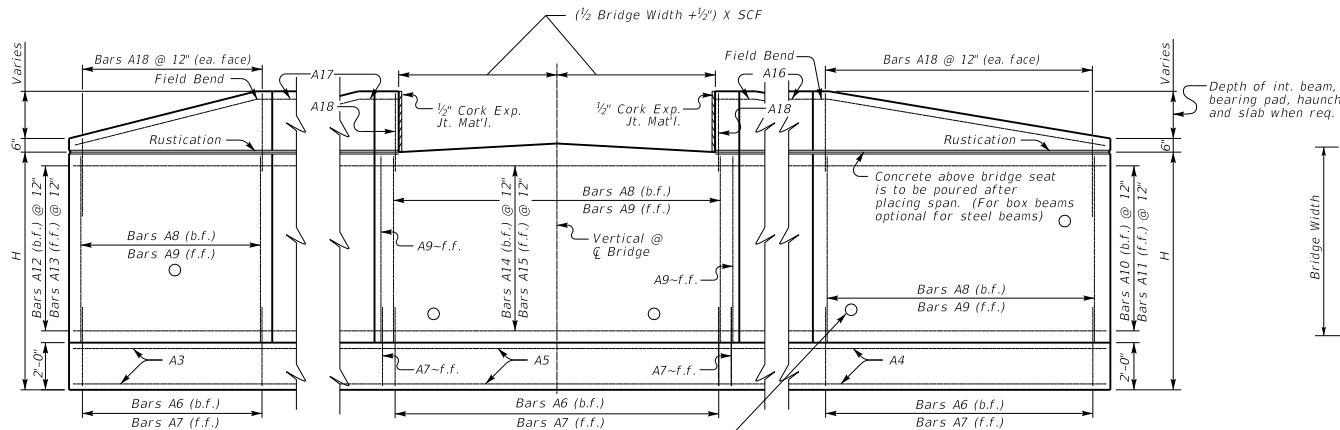


WALL SECTION

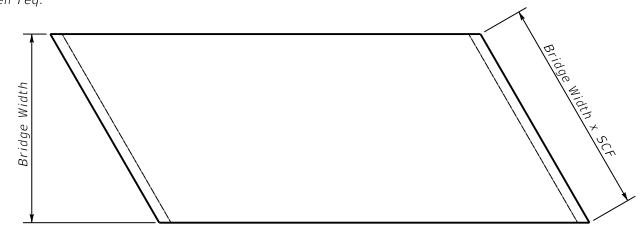


WING SECTION

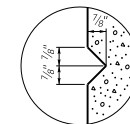
NOTE: Trim A16 & A17 bars if necessary



ELEVATION



PLAN OF SUPERSTRUCTURE SLAB



RUSTICATION

GROOVE

KENTUCKY
DEPARTMENT OF HIGHWAYS

20° SKEW VARIABLE
WIDTH ABUTMENT
50% SKEWED WINGS

STANDARD DRAWING NO. BSA-009

SUBMITTED *Boyd Adams* 02-26-20
DATE

APPROVED *Boyd Adams* 02-26-20
DATE

STATE ENGINEER