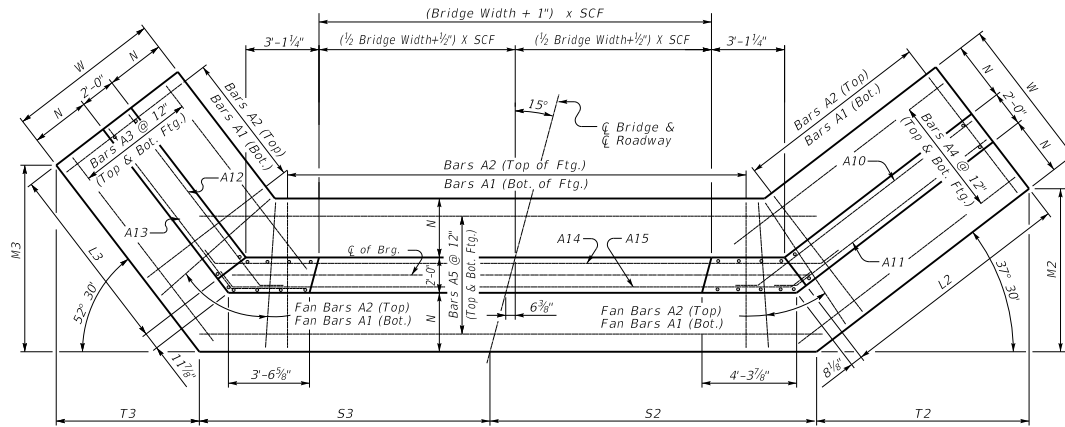


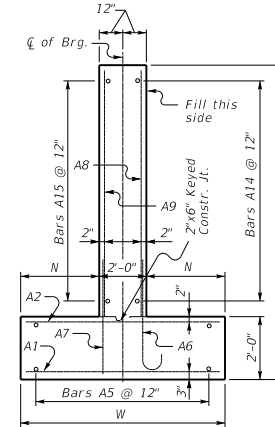
15° SKEW VARIABLE BRIDGE WIDTH 2:1 FILL SLOPES WINGS SKEWED 50% FROM ROADWAY TO BREASTWALL

ABUTMENT SKEW CORRECTION FACTOR (SCF) = 1.035

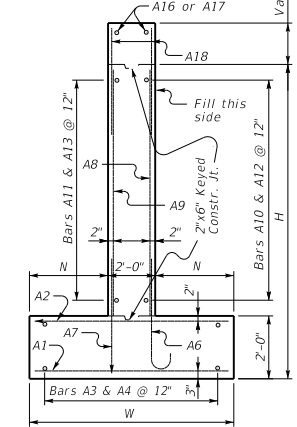


(Left Skew as shown; right skew opp. hand)

PLAN

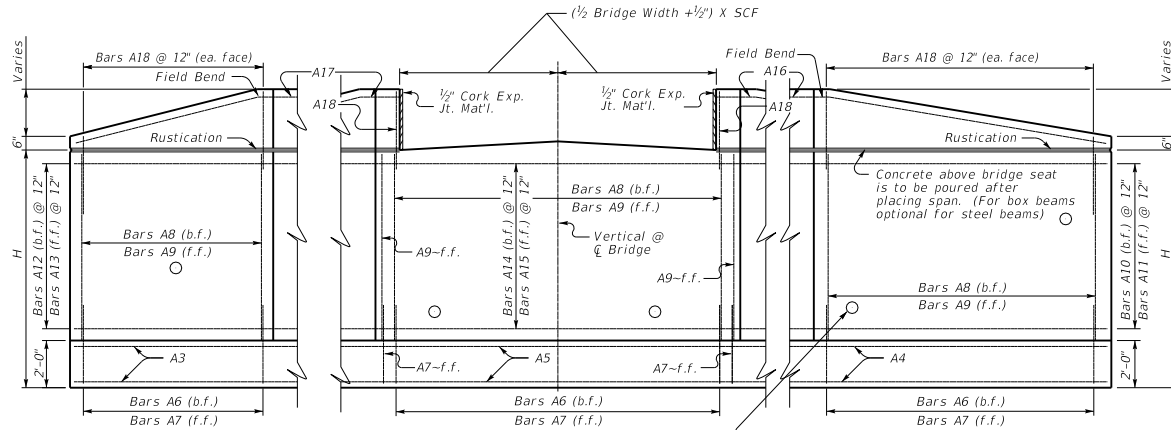


WALL SECTION



WING SECTION

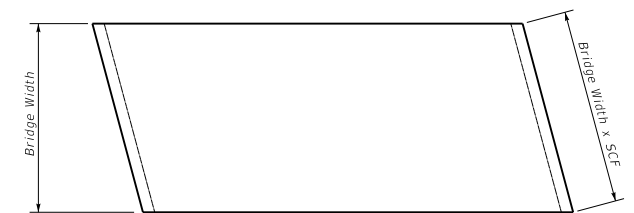
Note: Trim A16 & A17 bars if necessary



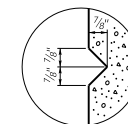
ELEVATION

Place 4" weep hole drains at 8'-0" centers at this elevation as to afford best drainage of backfill, in accordance with the Standard Specifications.

Depth of int. beam, bearing pad, haunch, and slab when req.



PLAN OF SUPERSTRUCTURE SLAB



**RUSTICATION
GROOVE**

KENTUCKY
DEPARTMENT OF HIGHWAYS
15° SKEW VARIABLE
WIDTH ABUTMENT
50% SKEWED WINGS

STANDARD DRAWING NO. BSA-007
SUBMITTED BY *Bob Ash* DATE 02-26-20
APPROVED BY *[Signature]* DATE 02-26-20
DIRECTOR DIVISION OF STRUCTURAL DESIGN
STATE ENGINEER