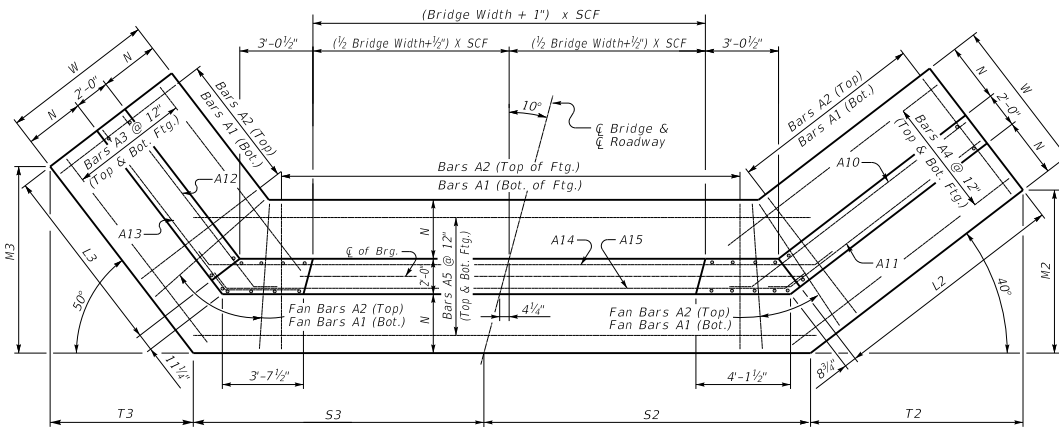


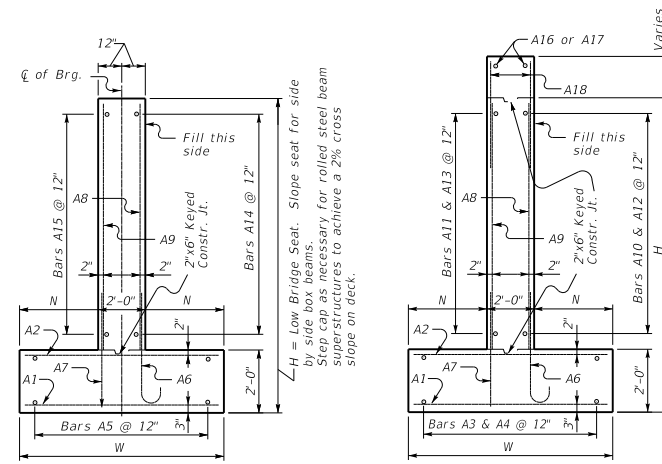
# 10° SKEW VARIABLE BRIDGE WIDTH 2:1 FILL SLOPES WINGS SKEWED 50% FROM ROADWAY TO BREASTWALL

ABUTMENT SKEW CORRECTION FACTOR (SCF) = 1.015



(Left Skew as shown; right skew opp. hand)

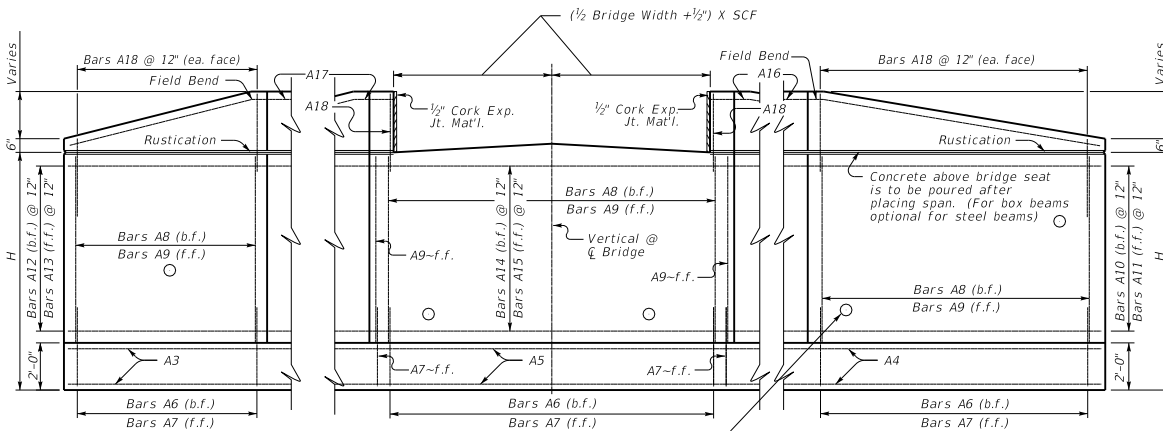
**PLAN**



**WALL SECTION**

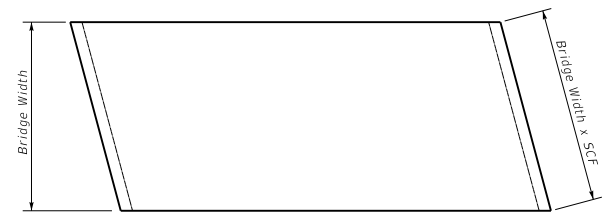
**WING SECTION**

Note: Trim A16 & A17 bars if necessary

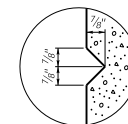


**ELEVATION**

Place 4" weep hole drains at 8'-0" centers at such elevation as to afford best drainage of backfill, in accordance with the Standard Specifications.



**PLAN OF SUPERSTRUCTURE SLAB**



**RUSTICATION GROOVE**

KENTUCKY  
DEPARTMENT OF HIGHWAYS

10° SKEW VARIABLE  
WIDTH ABUTMENT  
50% SKEWED WINGS

STANDARD DRAWING NO. BSA-005

SUBMITTED *Boyd Adams* 02-26-20  
DATE

APPROVED DIRECTOR DIVISION OF STRUCTURAL DESIGN 02-26-20  
DATE

APPROVED STATE REGISTERED ENGINEER 02-26-20  
DATE