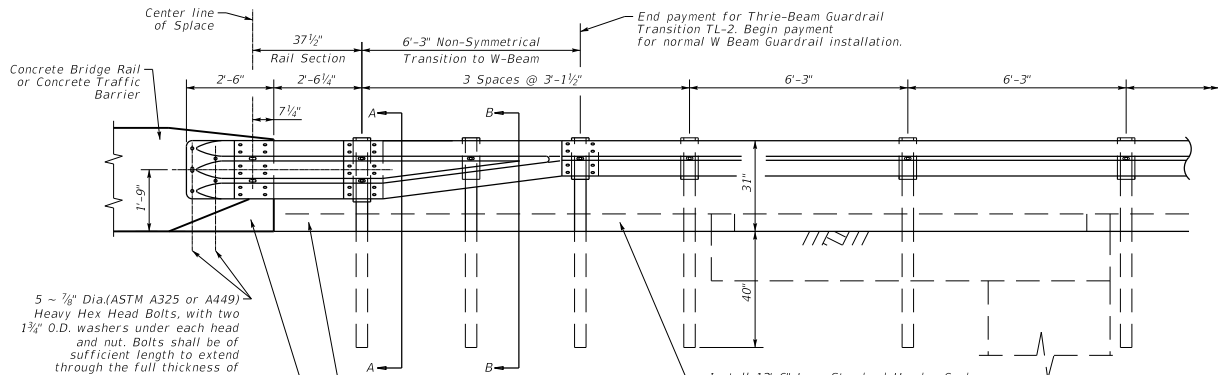


TYPICAL PLAN VIEW



TYPICAL ELEVATION VIEW

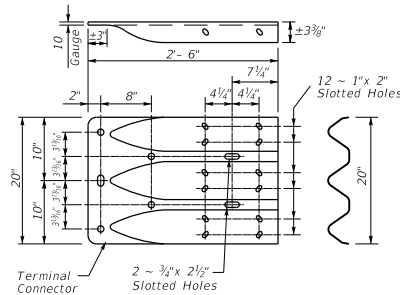
5 ~ 7/8" Dia. (ASTM A325 or A449) Heavy Hex Head Bolts, with two 1 1/4" O.D. washers under each head and nut. Bolts shall be of sufficient length to extend through the full thickness of the rail, washer, and nut. Install with bolt heads on traffic face.

Chamfer required on concrete rails that extend beyond the face of the guardrail transition.

Transition Curb to Barrier Shape within 4'-0" of end of Barrier.

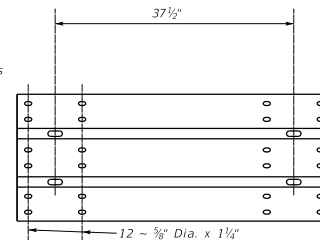
TERMINAL CONNECTION NOTE

To ensure a stable connection, (12) Rectangular Washers (See Std. Dwg. RBR-005, c.e.) are required under the recessed nuts at the Terminal Connection splice.

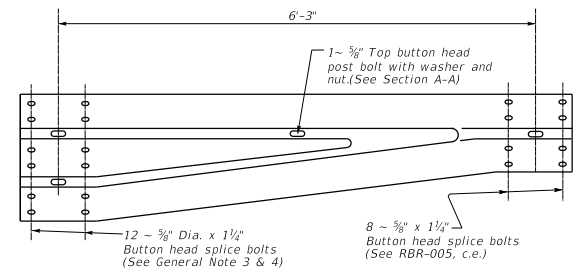


THRIE-BEAM TERMINAL CONNECTION

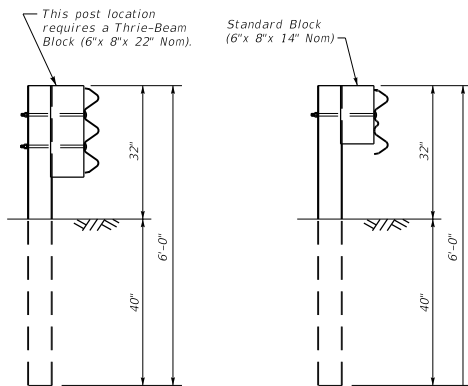
(See Terminal Connection Note)



THRIE-BEAM (3'-1 1/2") (10 GA.) ELEMENT SECTION

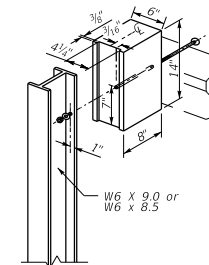


TRANSITION SECTION NON-SYMMETRICAL (10 GA.)



SECTION A-A

SECTION B-B



STEEL POST & BLOCK

(Showing Standard Block, see Thrie-Beam Guardrail Transition, TL-3 for Thrie-Beam Block & Post dimensions)

GENERAL NOTES

- Use steel posts unless otherwise indicated in the plans. The exact position of transitions shall be as shown in the plans or as directed by the Engineer.
- Rail element shall meet the requirements of AASHTO M180 except as modified in the plans.
- Button head "post" bolts (ASTM A307) shall be of sufficient length to extend through the full thickness of the nut and Type A 1 1/4" O.D. washer and not more than 1" beyond it. Button head "splice" bolts (ASTM A307) are 3/8" x 1 1/4" with 3/8" double recessed nuts (ASTM A563).
- Bolts, nuts, and washers shall be galvanized in accordance with AASHTO M232. Hardware shall be incidental to Thrie-Beam Guardrail Transition TL-2.
- If solid rock is encountered. See the standard specifications for the proper installation guidance.
- Posts shall not be set in concrete, of any depth.
- This railing has been successfully evaluated by full scale crash test to meet MASH TL-2 criteria. This railing transition is to be used when speeds are 45 mph or less.
- Install 12'-6" of Standard Header Curb or Standard Header Curb and Gutter if a Curb Box Inlet Type B or Flume is required at end of bridge. See Std. Dwg. RPM-100, c.e. for curb details. All costs to install the curb shall be incidental to the lump sum price bid for Thrie-Beam Guardrail Transition, TL-2. No curb is required if a Flume or Curb box is not installed at the end of the bridge.
- Method of measurement and basis of payment.
 - A. Thrie-Beam Guardrail Transition, TL-2 shall be paid at the contract unit price Each and includes the Thrie-beam terminal connection, Thrie-beam element, non symmetrical transition, curb or curb and gutter, posts, hardware and all other incidentals necessary to complete the installation. This transition must tie into W Beam Guardrail, which is not included in this transition bid item.
 - B. Plastic pipe and cost of forming holes shall be included in the cost for the bridge railing.

KENTUCKY
DEPARTMENT OF HIGHWAYS

THRIE-BEAM
GUARDRAIL TRANSITION
(TL-2)

STANDARD DRAWING NO. **BHS-013**

SUBMITTED *Boyd Adams* DIRECTOR DIVISION OF STRUCTURAL DESIGN DATE **02-26-20**
APPROVED *[Signature]* DATE **02-26-20**