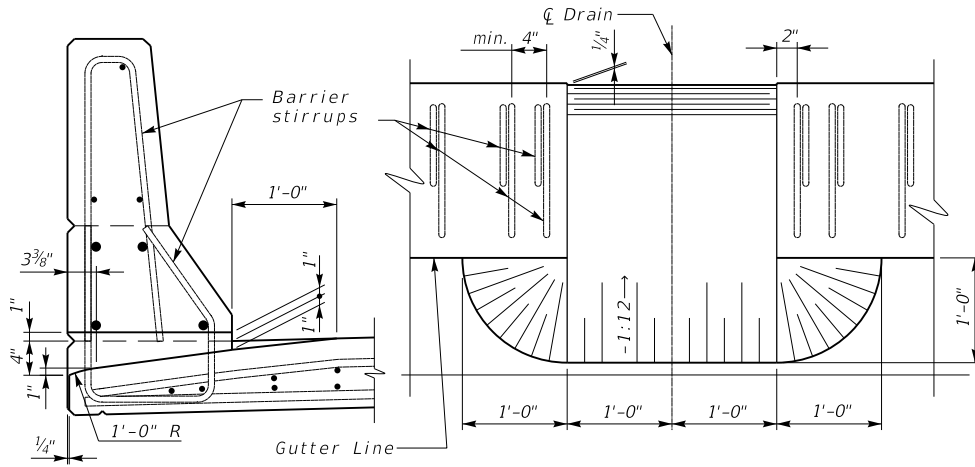


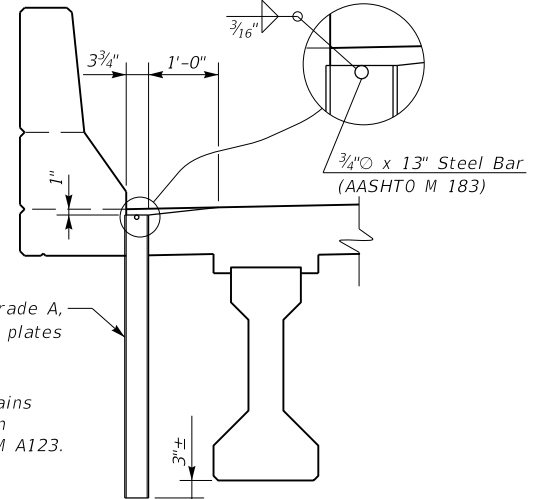
NOTE: Reposition barrier stirrups in manner shown as to not interfere with drain opening.



**SECTION THROUGH DRAIN      PLAN OF DRAIN (Barrier not in place)**

NOTE: Field bend top transverse slab reinforcement in the area of the drain to maintain 2 1/2" of concrete cover through the drain. Bend reinforcement approximately 1'-0" from the gutter line. Transverse slab reinforcement adjacent to the opening is not to be bent. Longitudinal reinforcement is not to be tied to the transverse reinforcement adjacent to the drain for a distance sufficient to allow the reinforcement to sag under the bent reinforcement in the drain area.

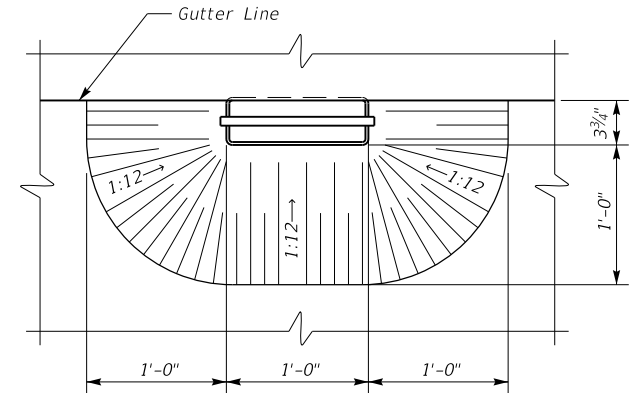
**THROUGH BARRIER DRAIN DETAILS**



1'-0" x 4" x 1/4" Tubing, Grade A, or 1/4" welded plates

NOTE: Assembled drains shall be galvanized in accordance with ASTM A123.

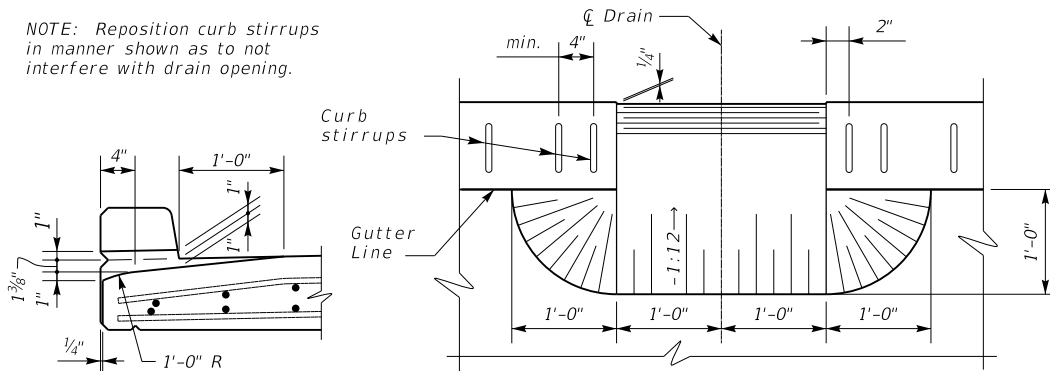
**SECTION THROUGH DRAIN**



**PLAN OF DRAIN**

**THROUGH DECK DRAIN DETAILS**

NOTE: Reposition curb stirrups in manner shown as to not interfere with drain opening.



**SECTION THROUGH DRAIN      PLAN OF DRAIN (Curb not in place)**

NOTE: Field bend top transverse slab reinforcement in the area of the drain to maintain 2 1/2" of concrete cover through the drain. Bend reinforcement approximately 1'-0" from the gutter line. Transverse slab reinforcement adjacent to the opening is not to be bent. Longitudinal reinforcement is not to be tied to the transverse reinforcement adjacent to the drain for a distance sufficient to allow the reinforcement to sag under the bent reinforcement in the drain area.

**THROUGH CURB DRAIN DETAILS**

KENTUCKY DEPARTMENT OF HIGHWAYS

BRIDGE DRAINS

STANDARD DRAWING NO. BGX-015-04  
 SUBMITTED *Ben Adams* 02-26-20  
 DIRECTOR DIVISION OF STRUCTURAL DESIGN DATE  
 APPROVED *[Signature]* 02-26-20  
 STATE REGISTERED ENGINEER DATE