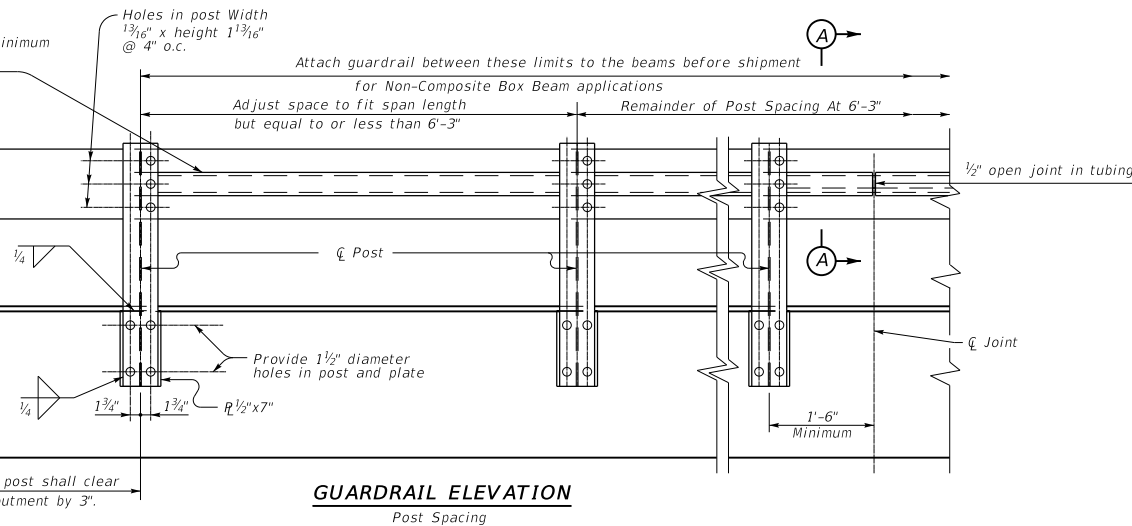
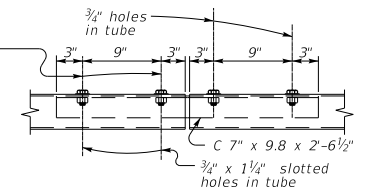


TS 8 x 4 x 0.1875 tubing minimum length center to center with 12'-6" splices.



Allow sliding between the tube and channel when tightening bolts in slotted holes.



Note: Connect bridge guardrail to Roadway Guardrail, refer to Std. Dwg. BHS-007, C.E.

KENTUCKY DEPARTMENT OF HIGHWAYS	
RAILING SYSTEM TYPE II	
STANDARD DRAWING NO. BDP-005-06	
SUBMITTED	02-26-20 DATE
DIRECTOR DIVISION OF STRUCTURAL DESIGN	
APPROVED	02-26-20 DATE
STATE ENGINEER	