



STENCIL FOR YEAR AND DESIGN LOADING
When year only is used place year in center of plate



STENCIL FOR DRAWING NUMBER

GENERAL NOTES

STENCILS: Fabricate all stencils from recessed panels with beveled edges with raised letters and figures in accordance with Subsection 601.03.19 of the Specifications.

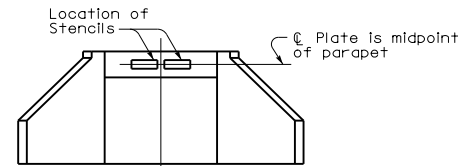
YEAR AND DESIGN LOADING STENCIL: Show the year that the contract is executed and the design load as shown on the contract plans. The design load is required on all structures classified as bridges by Subsection 101.03 of the Specifications and on other structures as referenced on plans.

DRAWING NUMBER STENCIL: Use this stencil on all structures. The number to be placed on the stencil shall be taken from the contract plans.

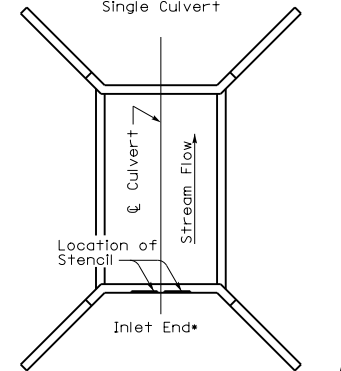
CONTRACTOR STENCIL: Place on all bridges, the name of the prime contractor and subcontractor(s), when applicable, in proximity to other stencils required.



CONTRACTOR STENCIL

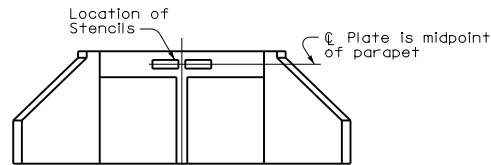


ELEVATION A-A
Single Culvert

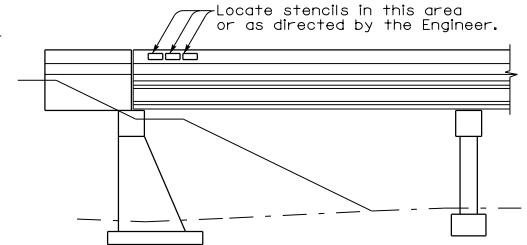


PLAN

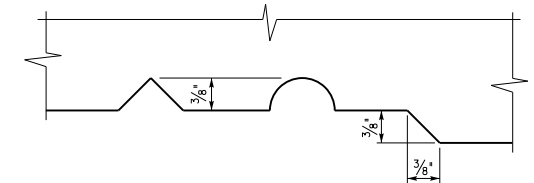
Location of Stencils on all Culverts (Single or Multiple) and Arches



ELEVATION A-A
Multiple span Culvert



LOCATION OF STENCILS ON BRIDGES



TYPE OF LETTERS

* Use the outlet end for outlet only extensions

KENTUCKY DEPARTMENT OF HIGHWAYS	
STENCILS FOR STRUCTURES	
STANDARD DRAWING NO. BGX-006-10	
SUBMITTED <i>Mad. Nite</i>	DATE 12-01-15
<small>DIRECTOR DIVISION OF STRUCTURAL DESIGN</small>	
APPROVED <i>[Signature]</i>	DATE 12-01-15
<small>STATE HIGHWAY ENGINEER</small>	