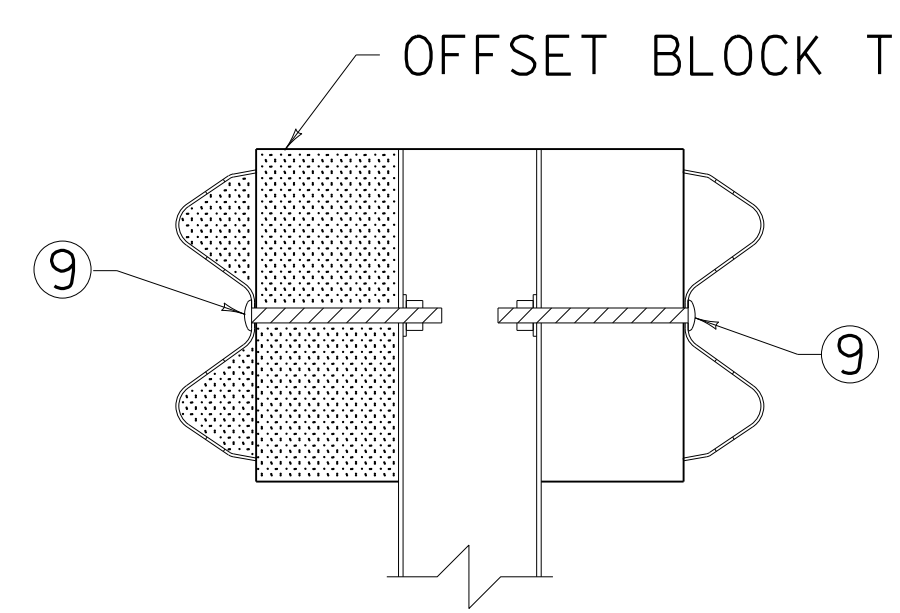
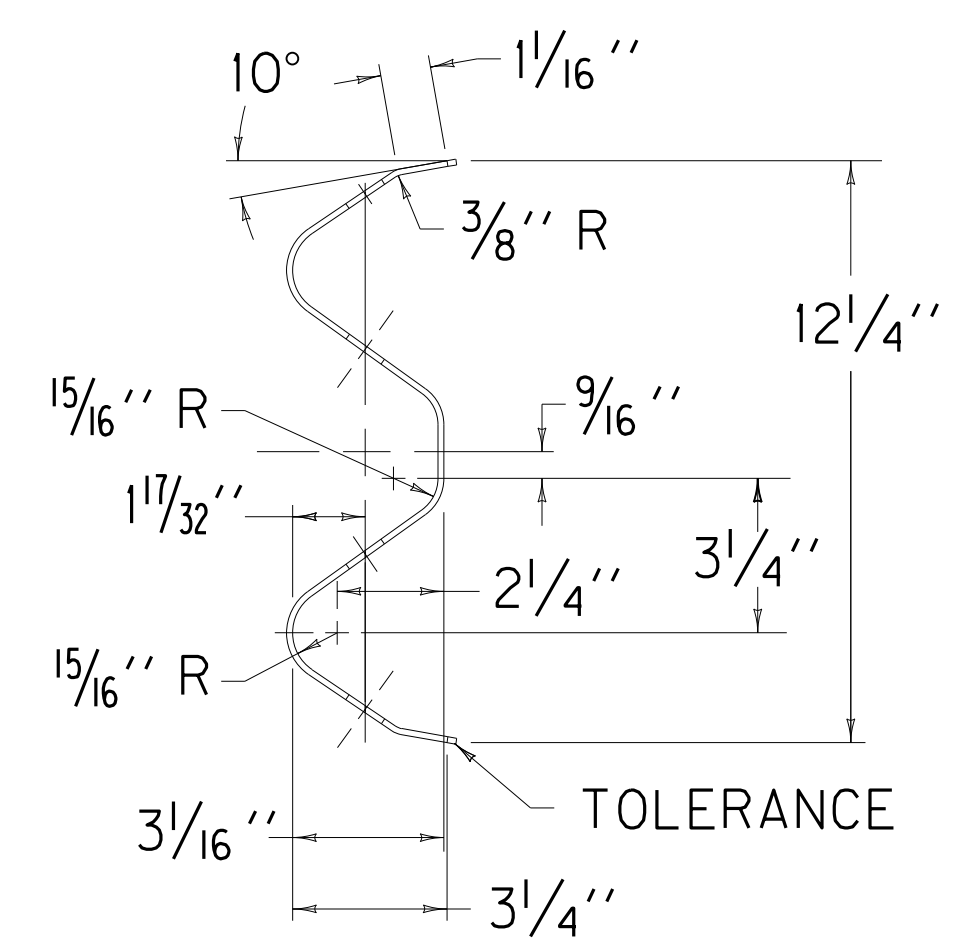
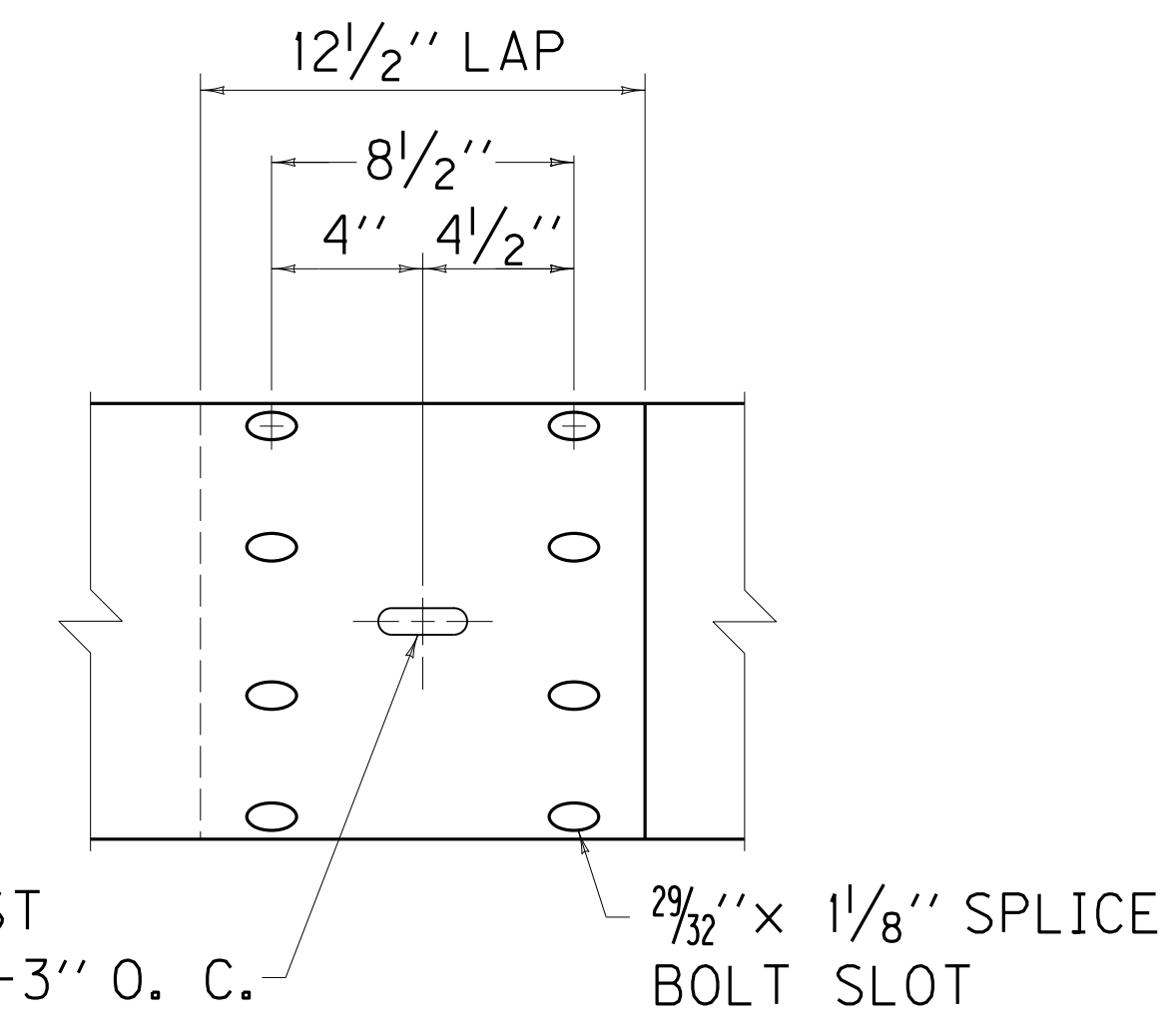
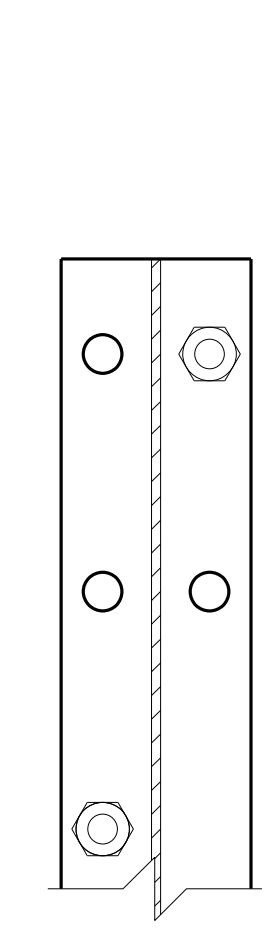
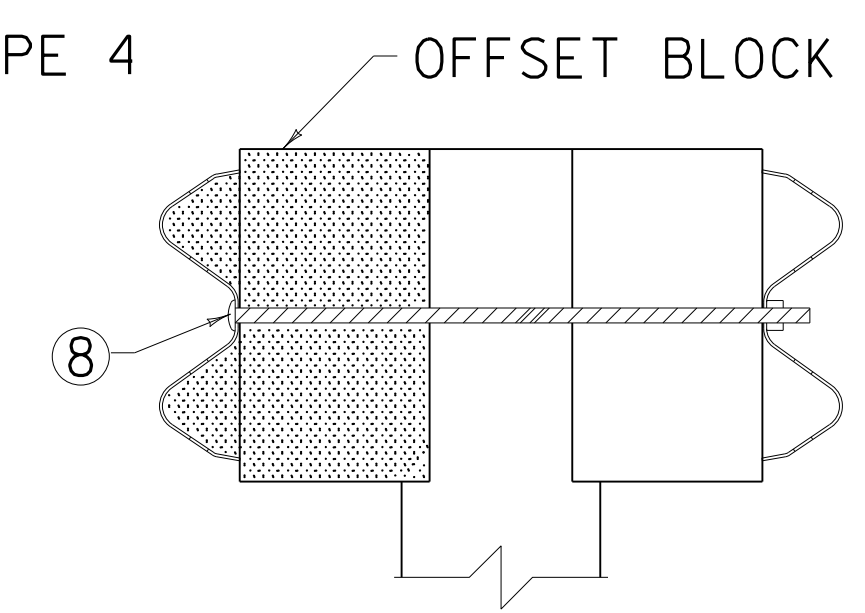


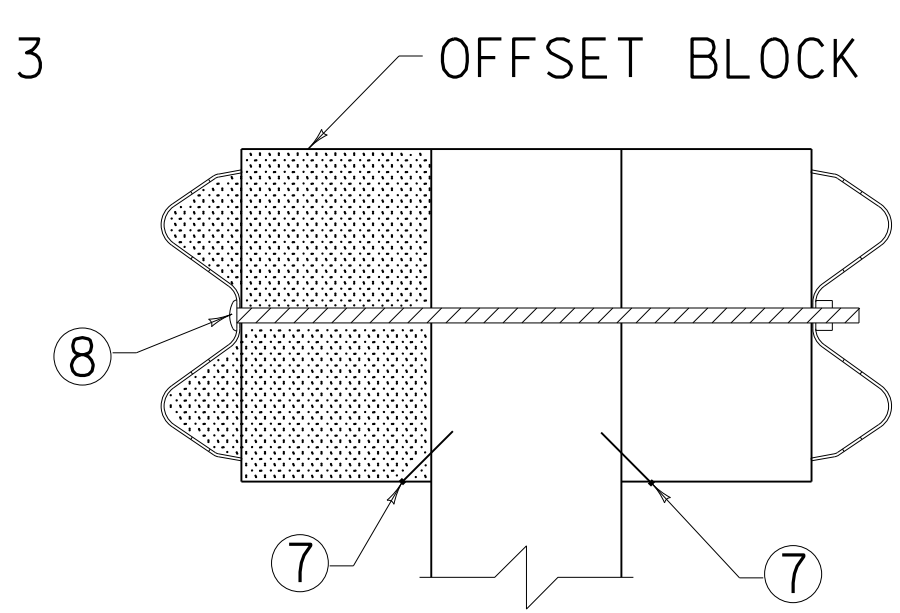
(DOUBLE FACE RAIL OR SINGLE FACE RAIL)



DOUBLE FACE RAIL WITH STEEL POST (W6x9) (TIMBER OR APPROVED COMPOSITE OFFSET BLOCK)



DOUBLE FACE RAIL WITH ROUND TIMBER POST



DOUBLE FACE RAIL WITH TIMBER POST

~ NOTES ~

- BID ITEM AND UNIT TO BID
GUARDRAIL-STEEL W BEAM-S FACE LF
OR
GUARDRAIL-STEEL W BEAM-D FACE LF
- 1. DIMENSIONAL TOLERANCES NOT SHOWN OR IMPLIED ARE INTENDED TO BE THOSE CONSISTENT WITH THE PROPER FUNCTIONING OF THE PART, INCLUDING ITS APPEARANCE AND ACCEPTED MANUFACTURING PRACTICES.
- 2. THE RAIL ELEMENT SHALL COMPLY WITH AASHTO M-180 -CLASS A, TYPE II.
- 3. ALL LAPS SHALL BE PLACED IN THE DIRECTION OF TRAFFIC FLOW.
- ④ TOLERANCE + 1/4", -1/4"
- ⑤ 8-5/8" x 1/4" LONG BUTTON HEAD BOLTS AND HEX HEAD RECESS NUTS REQUIRED FOR EACH RAIL SPLICE.
- ⑥ LENGTH EQUALS POST AND BLOCK WIDTH PLUS 2" FOR BOLT OR 2 1/4" FOR THREADED ROD.
- ⑦ GALVANIZED STEEL 10d COMMON COATED NAIL (DRIVE NAIL AT THE TOP OR BOTTOM CENTER OF BLOCK AND POST AFTER BOLT IS INSTALLED).
- ⑧ 5/8" x ⑥ STEEL THREADED ROD AND TWO (2) HEX HEAD NUTS OR 5/8" x ⑥ BUTTON OR HEX HEAD BOLT AND HEX HEAD NUT.
- ⑨ 5/8" x 8" BUTTON HEAD BOLT, HEX HEAD RECESS NUT AND ONE 5/8" ROUND WASHER (TYP.). BOLT SHALL HAVE A MINIMUM THREAD LENGTH OF 2".
- ⑩ REQUIRED FOR DOUBLE RAIL
- 10. BOTH 12'-6" AND 25' LENGTHS OF "W" BEAM GUARDRAIL SECTIONS WILL BE PERMITTED UNLESS OTHERWISE DIRECTED BY THE ENGINEER.

KENTUCKY DEPARTMENT OF HIGHWAYS	
STEEL BEAM GUARDRAIL ("W" BEAM)	
SUBMITTED: <i>William S. Stalick</i> DIRECTOR DIVISION OF DESIGN	11-17-17 DATE
027	