

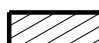
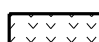
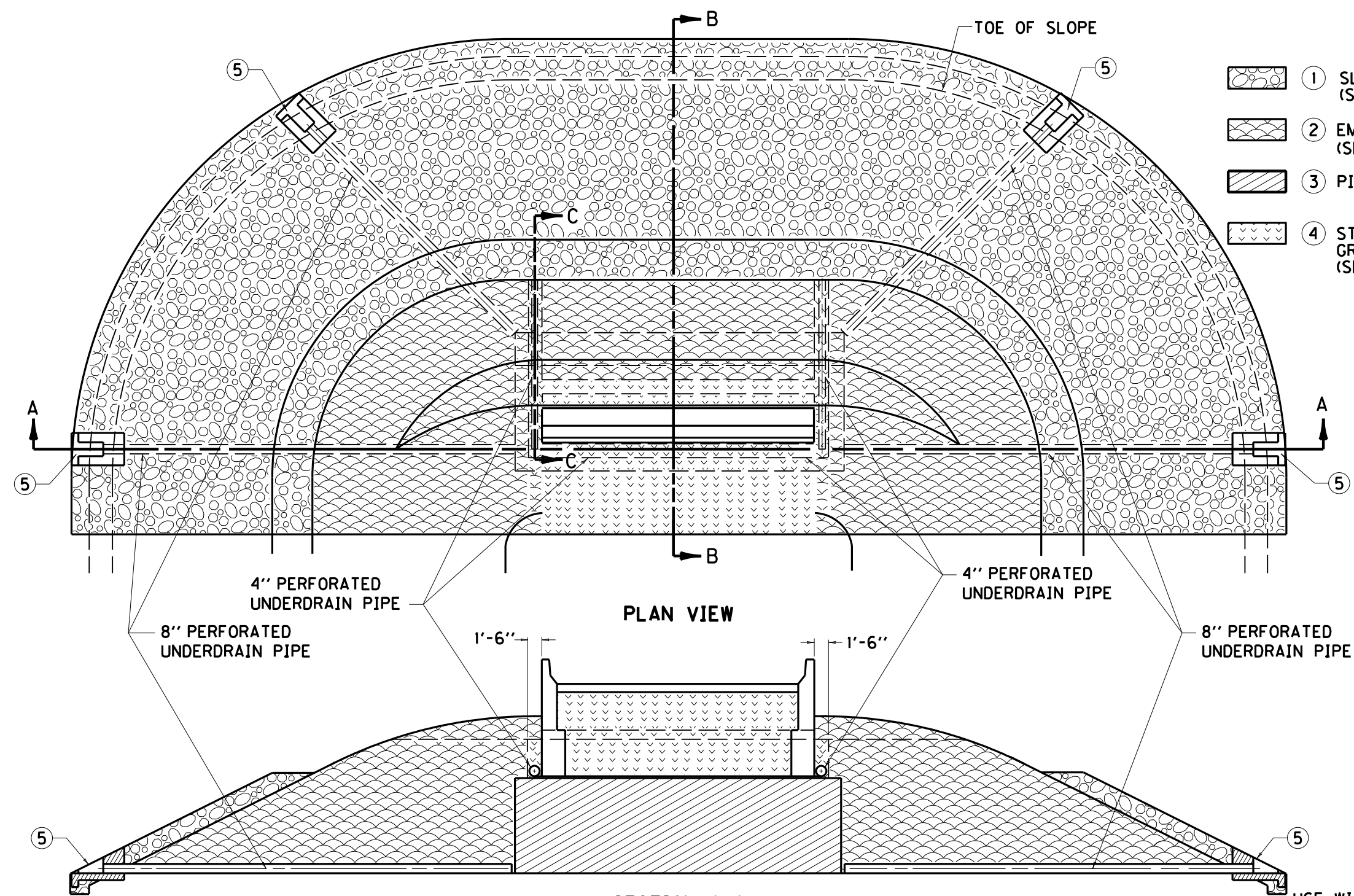


LEGEND

-  ① SLOPE PROTECTION (SEE BRIDGE PLANS)
-  ② EMBANKMENT (SEE ROADWAY PLANS)
-  ③ PILE CORE
-  ④ STRUCTURE GRANULAR BACKFILL (SEE BRIDGE PLANS)



~ NOTES ~

- THE PURPOSE OF THIS DRAWING AND CUR. SEPIA 010 IS TO DEFINE THE LIMITS OF THE FOUR MATERIALS SHOWN. FOR SIMPLICITY PURPOSES, AN END-BENT ON A ZERO DEGREE SKEW IS SHOWN. THE SAME PRINCIPLES WOULD APPLY FOR MORE VARIED STRUCTURES.
- ① SLOPE PROTECTION REQUIRED WHEN AND AS NOTED ON THE PLANS.
 - ② GRANULAR OR ROCK EMBANKMENT REQUIRED WHEN AND AS NOTED ON THE PLANS.
 - ③ PILE CORE IN ACCORDANCE WITH SPECIAL PROVISION NO. 69.
 - ④ STRUCTURE GRANULAR BACKFILL REQUIRED AT ALL TIMES.
 - ⑤ FOR HEADWALL CONSTRUCTION SEE CUR. STD. DWG RDP-010. (SEE ROADWAY PLANS)

USE WITH CUR. STD. DWG. RDP-010, SEPIA 010

KENTUCKY
DEPARTMENT OF HIGHWAYS

TREATMENT OF EMBANKMENTS AT END-BENTS

SUBMITTED *William P. Gabel* 1-30-17
DIRECTOR DIVISION OF DESIGN DATE

FILE NAME: C:\PIV\WORK\JEFF.L\A\LD\051283\SEPIA 008.DGN
 USER: jefl\jefl
 DATE PLOTTED: January 30, 2017
 E-SHEET NAME:
 MicroStation v8.11.7.443