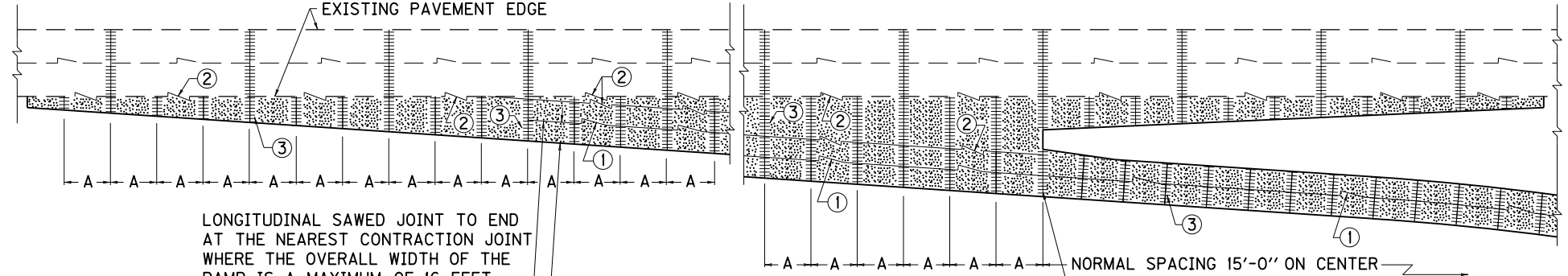


THIS DISTANCE TO BE EQUAL TO 1/2 NORMAL RAMP SECTION.

LONGITUDINAL SAWED JOINT TO END AT THE NEAREST CONTRACTION JOINT WHERE THE OVERALL WIDTH OF THE RAMP IS A MAXIMUM OF 16 FEET.

THIS CONTRACTION JOINT IN THE RAMP SHALL ALWAYS BE OPPOSITE THE CONTRACTION JOINT IN THE MAINLINE PAVEMENT.

**SINGLE LANE ENTRANCE RAMP**



LONGITUDINAL SAWED JOINT TO END AT THE NEAREST CONTRACTION JOINT WHERE THE OVERALL WIDTH OF THE RAMP IS A MAXIMUM OF 16 FEET.

THIS DISTANCE TO BE EQUAL TO 1/2 NORMAL RAMP SECTION.

THIS CONTRACTION JOINT IN THE RAMP SHALL ALWAYS BE OPPOSITE THE CONTRACTION JOINT IN THE MAINLINE PAVEMENT.

**SINGLE LANE EXIT RAMP**

**NOTES**

1. (A) WHEN JOINTED PLAIN CONCRETE PAVEMENT IS SPECIFIED FOR AN ACCELERATION LANE, DECELERATION LANE, AN ADDITIONAL LANE, OR TAPER, AND IS TO BE CONSTRUCTED ADJACENT TO AN EXISTING JOINTED REINFORCED CONCRETE PAVEMENT, THE SPACING OF THE TRANSVERSE CONTRACTION JOINTS IN THE JOINTED PLAIN CONCRETE PAVEMENT SHALL BE AS FOLLOWS:
  - (a) WHEN THE SPACING OF THE TRANSVERSE CONTRACTION JOINTS IN THE EXISTING PAVEMENT IS 50 FEET, THE SPACING OF THE TRANSVERSE CONTRACTION JOINTS IN THE JOINTED PLAIN CONCRETE PAVEMENT SHALL BE 16 2/3 FEET.
  - (b) WHEN THE SPACING OF THE TRANSVERSE CONTRACTION JOINTS IN THE EXISTING PAVEMENT IS 25 FEET, THE SPACING OF THE TRANSVERSE CONTRACTION JOINTS IN THE JOINTED PLAIN CONCRETE PAVEMENT SHALL BE 12 1/2 FEET.
2. SEE CURRENT STANDARD DRAWING RPS-010 FOR JOINT SYMBOLS AND DETAILS.
3. LONGITUDINAL SAWED JOINTS AT CENTER LINE SHALL BE REQUIRED FOR ALL RAMPS AND LOOPS GREATER THAN 16 FEET IN WIDTH.
4. ALL CONTRACTION JOINTS IN THE RAMP IMMEDIATELY OPPOSITE TO THE MAIN LINE PAVEMENT SHALL BE A CONTINUATION OF THE JOINTS IN THE MAINLINE PAVEMENT.
5. [Symbol] PROPOSED JOINTED PLAIN CONCRETE PAVEMENT.

<b>KENTUCKY</b>	
<b>DEPARTMENT OF HIGHWAYS</b>	
<b>CONCRETE</b>	
<b>PAVEMENT JOINTS</b>	
<b>TYPES &amp; SPACING</b>	
<b>STANDARD DRAWING NO. RPN-020-03</b>	
SUBMITTED: <i>[Signature]</i>	12-2-02 DATE
APPROVED: <i>[Signature]</i>	12-2-02 DATE