

NOTES

BID ITEM AND UNIT TO BID:

CLASS "A" CONCRETE FOR STEPS (CUBIC YARDS)

MATERIAL REQUIREMENTS:

(A) MAT REINFORCEMENT ②

NO. 4 REINFORCEMENT BARS, LONGITUDINAL BARS 6" O.C. AND TRANSVERSE BARS 12" O.C. MIN. GRADE 40; OR WELDED WIRE FABRIC - 6x6 - W4xW4 58 LBS./100 SQ. FT.

(B) NO. 4 REINFORCEMENT BARS ADDITIONALLY AS SHOWN.

(C) NO. 3 REINFORCEMENT BARS ADDITIONALLY AS SHOWN.

GENERAL:

(A) ROUND ALL EXPOSED EDGES AND CORNERS 1/4" R.

(B) MAT REINFORCEMENT IN BOTTOM OF THE STEPS SHALL BE WIRE FABRIC OR BAR MAT REINFORCEMENT ②.

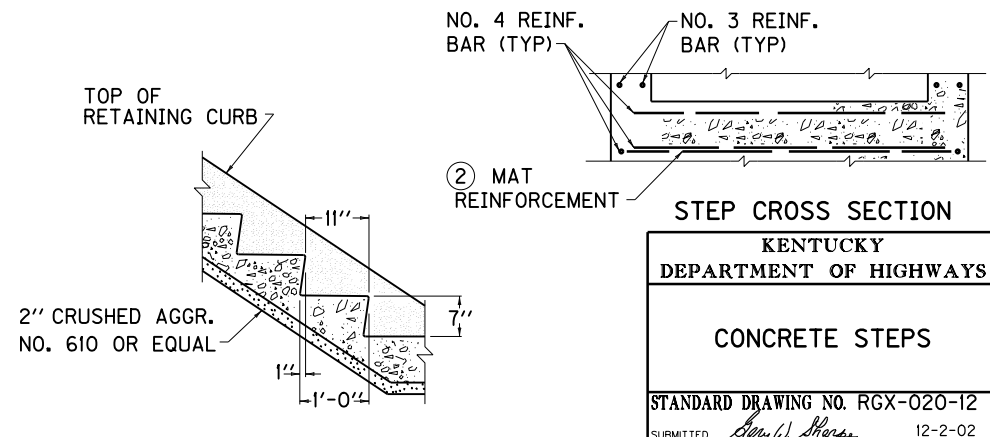
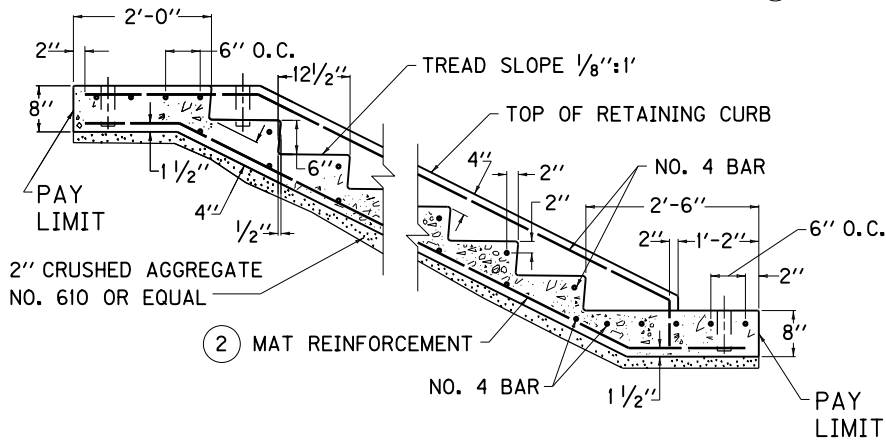
(C) HANDRAIL SHALL BE REQUIRED WITH THREE OR MORE STEPS.

(D) REINFORCING STEEL SHALL BE PLACED SO NOT TO INTERFERE WITH HANDRAIL POSTS.

TABLE OF QUANTITIES

SLOPE	LOCATION	ADDITIONAL NO. 4 BAR REINF. (LBS.)		MAT REINFORCEMENT				CU. YDS. CLASS "A" CONCRETE	
		4' WIDTH	①	WIRE FABRIC (SQ. FT.)		BAR MAT (LBS.)		4' WIDTH	①
				4' WIDTH	①	4' WIDTH	①		
2:1	BOTTOM LANDING	23.547	3.340	11.776	2.375	27.388	5.177	0.337	0.059
	INTERMEDIATE STEP	10.855	1.336	5.991	1.208	12.191	2.283	0.16	0.025
	TOP LANDING	22.483	3.340	9.504	1.917	20.708	3.897	0.265	0.051
1 1/2:1	BOTTOM LANDING	23.603	3.340	12.602	2.542	28.613	5.400	0.36	0.062
	INTERMEDIATE STEP	10.271	1.336	5.268	1.063	11.119	2.088	0.16	0.025
	TOP LANDING	22.545	3.340	9.710	1.958	21.014	3.952	0.281	0.054

① APPROXIMATE QUANTITY TO ADD FOR EACH ADDITIONAL FOOT OF WIDTH OVER 4'-0".



KENTUCKY DEPARTMENT OF HIGHWAYS

CONCRETE STEPS

STANDARD DRAWING NO. RGX-020-12

SUBMITTED: *Ben W. Stone* 12-2-02
 DIRECTOR DIVISION OF DESIGN DATE
 APPROVED: *F. M. Youell* 12-2-02
 STATE HIGHWAY ENGINEER DATE