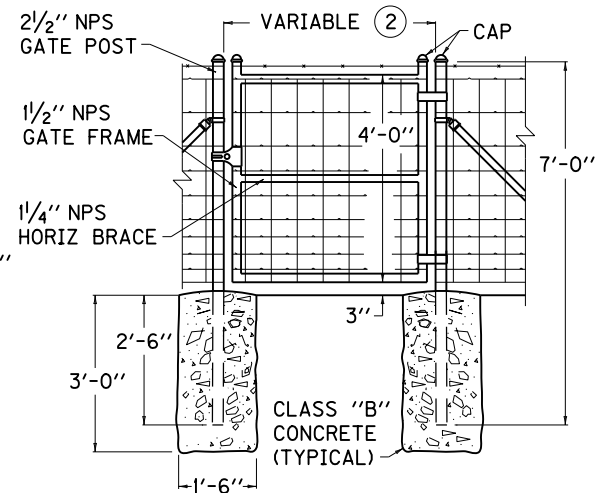
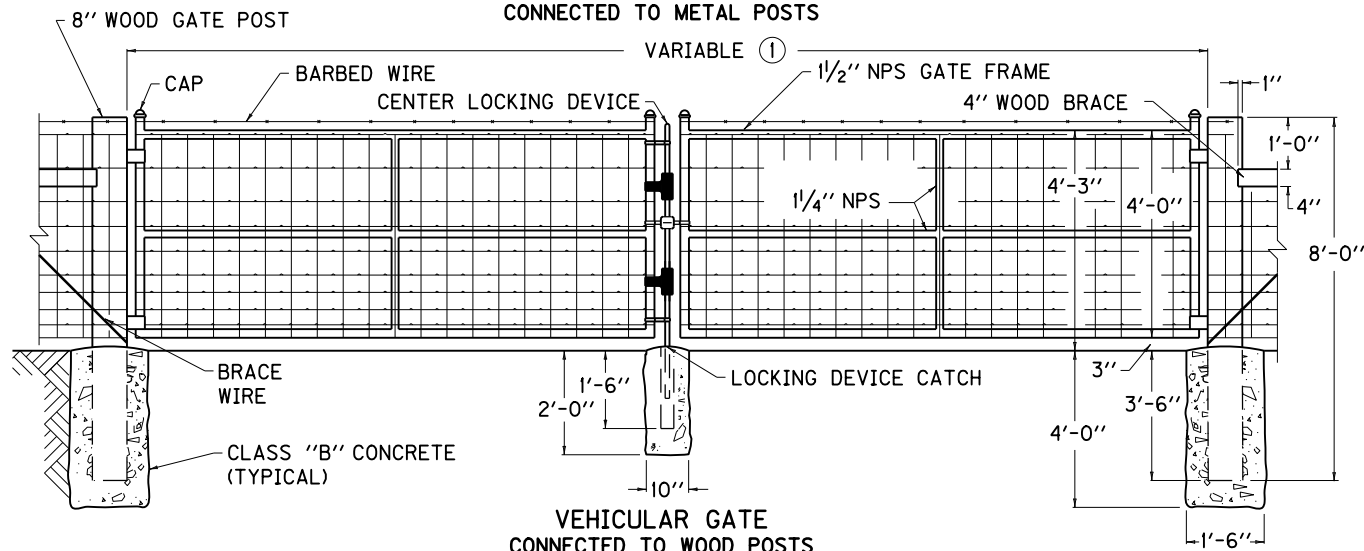


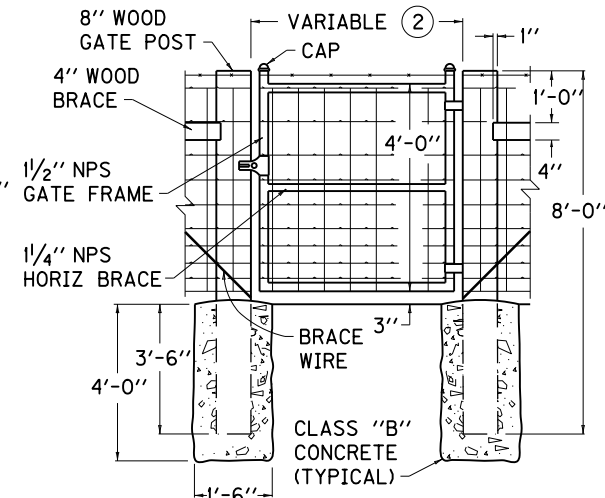
VEHICULAR GATE
CONNECTED TO METAL POSTS



PEDESTRIAN GATE
CONNECTED TO METAL POSTS



VEHICULAR GATE
CONNECTED TO WOOD POSTS



PEDESTRIAN GATE
CONNECTED TO WOOD POSTS

BASIS OF PAYMENT

THE CONTRACT UNIT PRICE FOR WOVEN WIRE GATES SHALL BE:

- ① FEET WIDE SINGLE VEHICULAR WOVEN WIRE GATE
- ① FEET WIDE DOUBLE VEHICULAR WOVEN WIRE GATE
- ② FEET WIDE PEDESTRIAN WOVEN WIRE GATE
- ① - ② AS SHOWN ON PLANS

CONSTRUCTION REQUIREMENTS

FABRIC TIE WIRES SHALL BE SPACED 1'-0" ON CENTERS.
THE CONTRACTOR IS NOT TO ORDER GATES UNTIL THEIR NECESSITY AND LOCATION HAVE BEEN CERTIFIED BY THE ENGINEER.

MATERIALS

WOVEN-WIRE FABRIC USED IN THE GATES SHALL EITHER BE ALUMINUM-COATED STEEL NO. 1047-6-9 OR ZINC-COATED STEEL NO. 1047-6-9.

NPS = NOMINAL PIPE SIZE - ASTM F1083 AND F1043 (HEAVY INDUSTRIAL FENCE) SHALL GOVERN.

GATES SHALL HAVE HEAVY PRESSED STEEL CORNERS SECURELY RIVETED OR SHALL BE MACHINE NOTCHED AND ELECTRICALLY WELDED SO AS TO BE RIGID AND WATER TIGHT. ALL WELDED JOINTS SHALL BE CLEANED AND PAINTED WITH TWO (2) COATS OF ALUMINUM PAINT.

GENERAL

- ① 6' TO 13' WIDTH FOR SINGLE GATE AND 12' TO 26' WIDTH FOR DOUBLE GATE.
- ② 4' TO 6' WIDTH

NOTES

KENTUCKY DEPARTMENT OF HIGHWAYS	
WOVEN WIRE GATES	
STANDARD DRAWING NO. RFG-001-06	
SUBMITTED <i>John B. Schlotter</i> DIRECTOR DIVISION OF DESIGN	12-1-99 DATE
APPROVED <i>J. M. Howell</i> STATE HIGHWAY ENGINEER	12-1-99 DATE