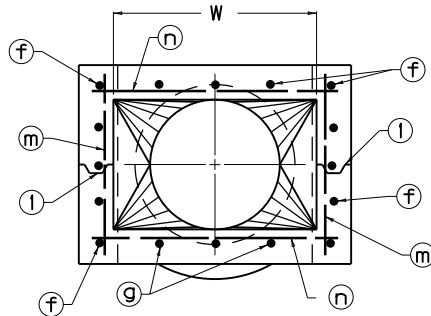
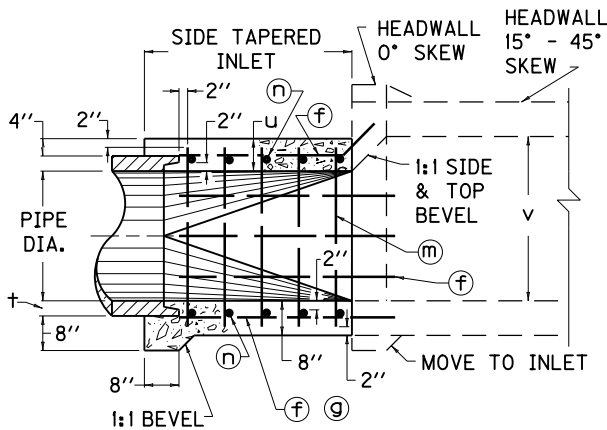


PLAN VIEW

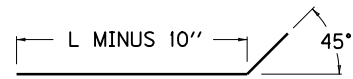


SECTION B-B

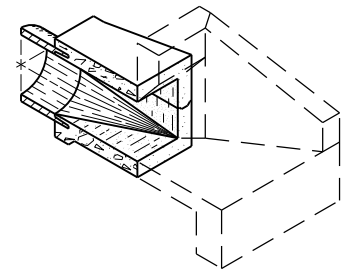


SECTION A-A

DIMENSIONS AND QUANTITIES												
PIPE DIA.	30"	36"	42"	48"	54"	60"						
ELLIPT. EQUIV. HDWL. TO USE	42"	48"	54"	60"	66"	72"						
NO. 5 BARS	QTY.	LENGTH	QTY.	LENGTH	QTY.	LENGTH	QTY.	LENGTH	QTY.	LENGTH	QTY.	LENGTH
f	13	4'-2"	14	4'-2"	16	5'-2"	17	5'-2"	19	5'-2"	22	6'-2"
g	3	4'-2"	4	4'-2"	4	5'-2"	5	5'-2"	5	5'-2"	6	6'-2"
m	10	3'-6"	10	4'-0"	12	4'-6"	12	5'-0"	12	5'-8"	14	6'-2"
n1	2	3'-8"	2	4'-2"	2	4'-8"	2	5'-2"	2	5'-8"	2	6'-0"
n2	2	3'-11"	2	4'-6"	2	5'-0"	2	5'-6"	2	6'-0"	2	6'-4"
n3	2	4'-2"	2	4'-10"	2	5'-4"	2	5'-10"	2	6'-4"	2	6'-8"
n4	2	4'-6"	2	5'-2"	2	5'-8"	2	6'-2"	2	6'-8"	2	7'-0"
n5	2	4'-9"	2	5'-6"	2	6'-0"	2	6'-6"	2	7'-0"	2	7'-4"
n6	-	-	-	-	2	6'-4"	2	6'-10"	2	7'-4"	2	7'-8"
n7	-	-	-	-	-	-	-	-	-	-	2	8'-0"
LBS. STEEL	150	170	233	256	282	372						
CU. YD. CONC.	1.38	1.66	2.48	2.87	3.28	4.47						
L	4'-0"	4'-0"	5'-0"	5'-0"	5'-0"	6'-0"						
W	3'-11"	4'-7"	5'-4"	6'-1"	6'-9"	7'-6"						
Q	0'-6"	0'-8"	0'-10"	1'-0"	1'-2"	1'-6"						
u	0'-7 1/2"	0'-8"	0'-8 1/2"	0'-9"	0'-9 1/2"	0'-10"						
v	3'-2"	3'-8"	4'-2"	4'-8"	5'-2"	5'-8"						
t	0'-3 1/2"	0'-4"	0'-4 1/2"	0'-5"	0'-5 1/2"	0'-6"						



f BAR DETAIL



ISOMETRIC OF SECTION A-A (0° SKEW HEADWALL SHOWN)

NOTES

- CONSTRUCTION JOINT PERMITTED.
- THIS INLET SHALL BE CONSTRUCTED IN ACCORDANCE WITH THE CURRENT STANDARD SPECIFICATIONS, AS APPLICABLE.
- SHOULD INLET DIMENSIONS CONFLICT WITH THOSE OF THE HEADWALL, THE INLET SHALL GOVERN.
- INLET QUANTITIES SHALL BE COMBINED WITH HEADWALL QUANTITIES. NOTES SHALL APPEAR ON THE PIPE DRAINAGE SUMMARY INDICATING THIS INCLUSION.
- THE INLET INTERIOR SHALL TAPER FROM A RECTANGULAR OPENING AT THE HEADWALL JUNCTION TO A CIRCULAR CONFIGURATION AT THE PIPE. (NOTE THE 1:1 TOP AND SIDE BEVELS TO BE CONSTRUCTED ON THE HEADWALL PORTION.
- MINOR MODIFICATIONS IN THIS DESIGN, SUCH AS TRANSITIONING FROM ELLIPTICAL TO CIRCULAR, MAY BE MADE IF APPROVED IN WRITING BY THE ENGINEER.
- ENCIRCLED LETTERS, ○, INDICATE STEEL REINFORCING BAR LOCATIONS.
- FIVE PERCENT (5%) VERTICAL ELONGATION OF METAL PIPE SHALL BE ELIMINATED AND MADE ROUND FOR 48", 54", AND 60" PIPE WHERE IT JOINS THE INLET.

KENTUCKY
DEPARTMENT OF HIGHWAYS

**SIDE TAPERED INLETS
30" TO 60" DIA.
ALL SLOPES - ALL SKEWS**

STANDARD DRAWING NO. RDX-150-05

SUBMITTED: *Don W. Starns* 12-2-02
DIRECTOR DIVISION OF DESIGN DATE

APPROVED: *J. M. Yourell* 12-2-02
STATE HIGHWAY ENGINEER DATE