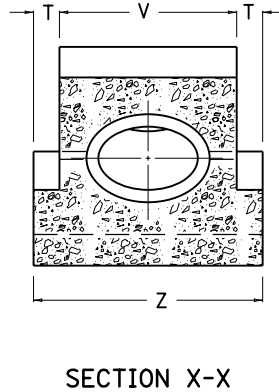
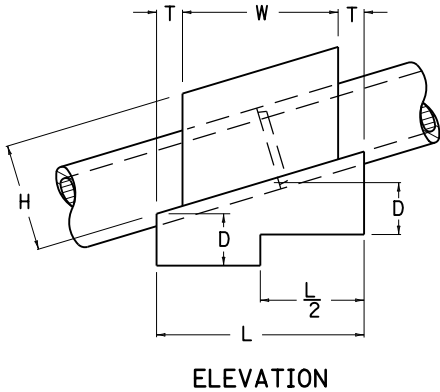
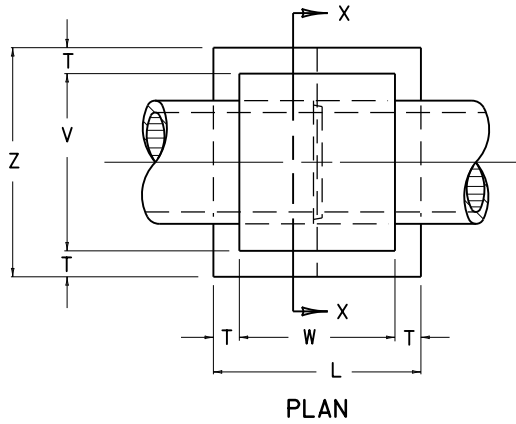


~INTERMEDIATE ANCHOR~



NOTES

1. THE UNIT PRICE BID PER CU. YD. FOR CLASS "A" CONCRETE SHALL INCLUDE ALL FORMS, MATERIALS, LABOR, ETC. INCIDENTAL TO CONSTRUCTION.
2. VOLUME DISPLACED BY BARREL OF PIPE HAS BEEN COMPUTED USING DIMENSION OF PIPE.
3. FOR GRADE BREAKS IN PIPE, USE AVERAGE GRADE TO CALCULATE VOLUMES.

~INTERMEDIATE ANCHOR FOR PIPE~

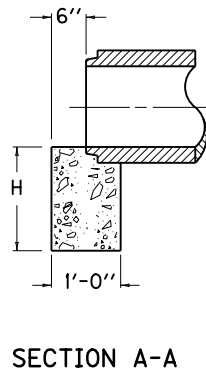
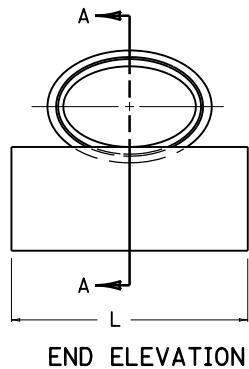
NON-CIRCULAR PIPE: EQUIVALENT ROUND SIZES

VOLUME IN CU. YDS. OF CLASS "A" CONCRETE FOR ONE ANCHOR	% GRADE	15"	18"	24"	27"	30"	33"	36"	39"	42"	48"	54"	60"	
	0	.98	1.22	1.80	2.18	2.57	2.98	3.54	4.60	6.65	8.04	10.66	8.23	
10	1.08	1.27	1.88	2.28	2.69	3.12	3.70	4.83	6.86	8.42	11.20	9.20		
20	1.16	1.32	1.95	2.36	2.80	3.25	3.85	5.04	7.13	8.77	11.70	10.00		
30	1.24	1.36	2.02	2.44	2.90	3.37	3.99	5.23	7.39	9.10	12.16	10.72		
40	1.32	1.40	2.08	2.53	2.99	3.47	4.12	5.41	7.69	9.39	12.59	11.37		
50	1.40	1.45	2.14	2.60	3.08	3.58	4.23	5.57	7.84	9.67	12.97	11.94		
60	1.42	1.49	2.20	2.67	3.14	3.67	4.34	5.72	8.05	9.92	13.33	12.47		
70	1.47	1.53	2.26	2.72	3.24	3.76	4.44	5.86	8.24	10.16	13.67	12.94		
80	1.51	1.57	2.31	2.76	3.31	3.84	4.53	5.99	8.41	10.38	13.98	13.37		
90	1.54	1.60	2.37	2.83	3.39	3.92	4.62	6.12	8.58	10.58	14.27	13.75		
100	1.58	1.64	2.42	2.92	3.45	4.00	4.70	6.23	8.74	10.78	14.54	14.11		
DIMENSIONS	L	3'-9"	4'-0"	4'-7"	4'-11"	5'-3"	5'-6"	5'-10"	6'-6"	7'-2"	7'-8"	9'-2"	9'-10"	
	W	2'-9"	3'-0"	3'-7"	3'-11"	4'-3"	4'-6"	4'-10"	5'-4"	5'-10"	6'-4"	7'-8"	7'-6"	
	H	1'-9"	2'-2"	2'-7"	2'-10"	3'-2"	3'-3"	3'-6"	3'-9"	4'-2"	4'-4"	4'-9"	5'-4"	
	D	1'-0"						1'-6"						
	V	3'-0"	3'-5"	4'-1"	4'-5"	4'-10"	5'-2"	5'-6"	6'-1"	6'-7"	7'-3"	8'-2"	7'-6"	
	T	6"						7"		8"		9"		8"
	Z	4'-0"	4'-5"	5'-1"	5'-5"	5'-10"	6'-2"	6'-6"	7'-3"	7'-11"	8'-7"	9'-8"	8'-10"	

~END ANCHOR FOR PIPE OUTLET~
(CLASS "A" CONCRETE)

DIMENSIONS	L	3'-0"	3'-5"	4'-1"	4'-5"	4'-10"	5'-2"	5'-6"	6'-0"	6'-6"	7'-2"	7'-10"	7'-10"
	H ON EARTH	1'-6"						2'-0"					
	H ON ROCK	1'-0"											
VOLUME CU. YDS. (ONE ANCHOR)	EARTH	0.17	0.19	0.23	0.25	0.27	0.29	0.31	0.33	0.48	0.53	0.58	0.58
	ROCK	0.11	0.13	0.15	0.16	0.18	0.19	0.20	0.22	0.24	0.27	0.29	0.29

~END ANCHOR~



**KENTUCKY
DEPARTMENT OF HIGHWAYS**

**INTERMEDIATE AND
END ANCHORS FOR
NON CIRCULAR PIPE**

STANDARD DRAWING NO. RDX-065-03

SUBMITTED John B. Sackett 12-1-99
DIRECTOR DIVISION OF DESIGN DATE

APPROVED J. M. Howell 12-1-99
STATE HIGHWAY ENGINEER DATE