

PLAN VIEW

NOTES

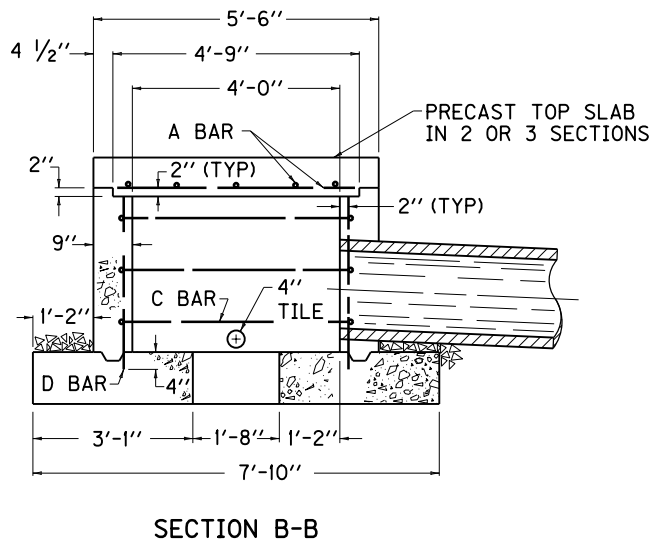
LOCATION OF OPENING MAY BE DETERMINED IN THE FIELD FOR A SIDE OR BOTTOM SPRING INLET.
 SPRING INLET TYPE "A" SHALL BE USED WHEN FILL OVER TOP IS 10' OR MORE.

STEEL REINFORCEMENT

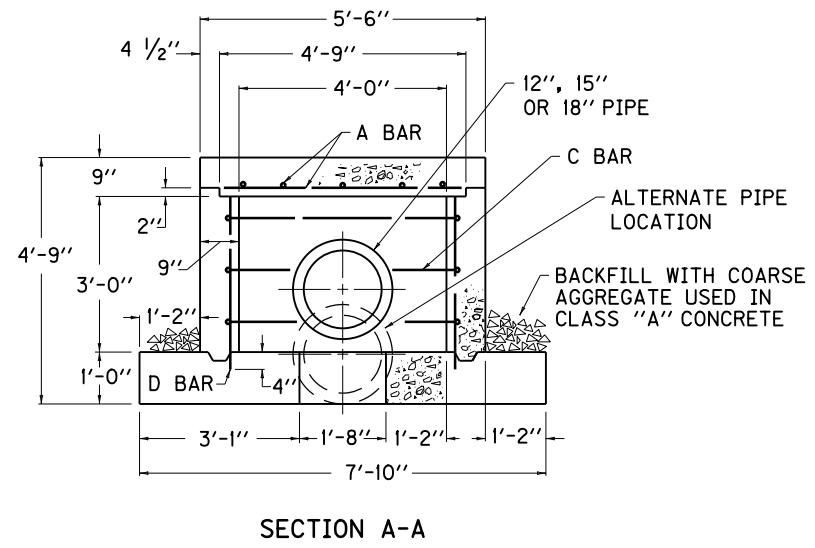
NO.	4 STEEL BARS	TOTAL	
BAR	QTY.	LIN. FT.	LBS.
A	10	4'-7"	105
C	6	9'-9"	
D	16	3'-4"	

CLASS "A" CONCRETE

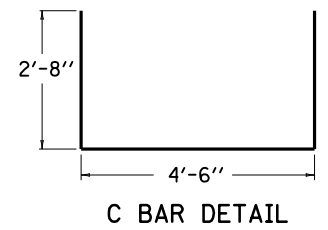
PIPE DIA.	CU. YDS. CONCRETE
12"	4.61
15"	4.59
18"	4.58



SECTION B-B



SECTION A-A



C BAR DETAIL

KENTUCKY
 DEPARTMENT OF HIGHWAYS

SPRING BOX
 INLET
 TYPE "A"

STANDARD DRAWING NO. RDX-010-04

SUBMITTED: *John B. Sackett* DIRECTOR, DIVISION OF DESIGN 12-1-99 DATE
 APPROVED: *J. M. Howell* STATE HIGHWAY ENGINEER 12-1-99 DATE