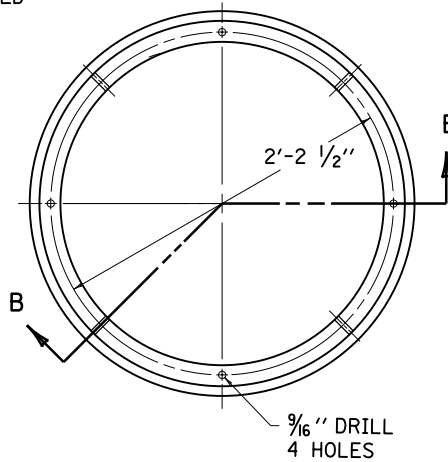
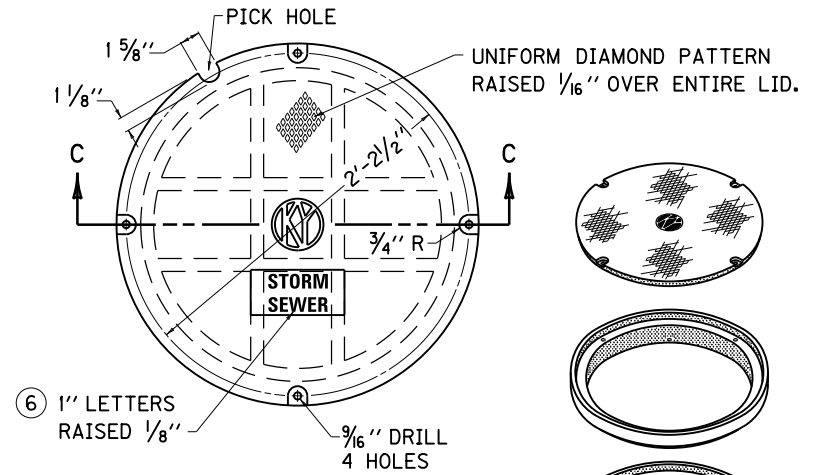


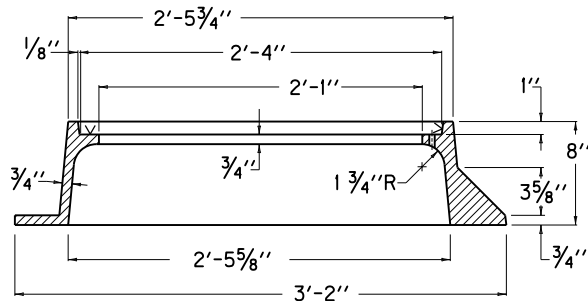
PLAN VIEW
 $\frac{27}{64}$ " DRILL
 $\frac{1}{2}$ -13 NC-2B-4 HOLES



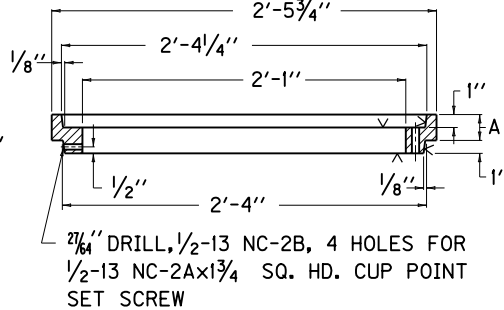
PLAN VIEW
 $\frac{9}{16}$ " DRILL
 4 HOLES



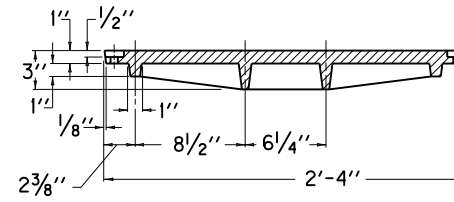
PLAN VIEW



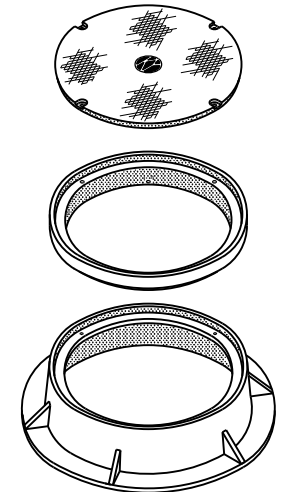
FRAME
 SECTION A-A



ADJUSTING RING
 SECTION B-B



LID
 SECTION C-C



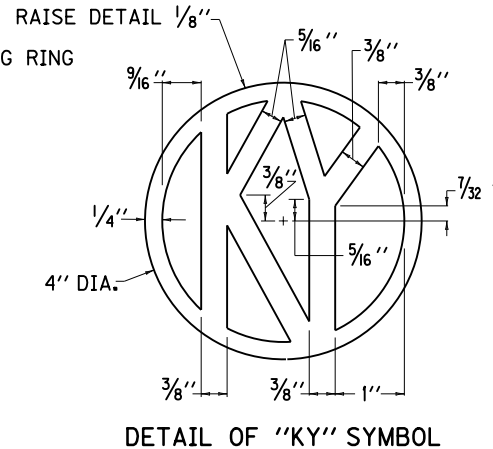
ISOMETRIC
 EXPLODED VIEW

DIMENSION	A (8)
	1 1/2"
	2"
	2 1/2"
	3"

APPROX. WEIGHT	
FRAME	270 LBS.
LID	240 LBS.

~ NOTES ~

1. THE LID SHALL BE FASTENED WITH $\frac{1}{2}$ -13 NC-2Ax2 HEXAGON CAP SCREW. WHEN THE ADJUSTING RING IS USED ADD DIMENSION (A) SHOWN IN SECTION B-B TO THE LENGTH OF THE CAP SCREW.
2. THE CAP SCREWS AND SET SCREWS SHALL BE STAINLESS STEEL, TYPES 302, 304, AND 430 CONFORMING TO ASTM A276.
3. MANUFACTURER'S TOLERANCES WILL BE ACCEPTED ON ALL DIMENSIONS.
4. ADJUSTING RINGS WHEN REQUIRED SHALL BE PAID FOR AT THE CONTRACT UNIT PRICE EACH AND SHALL INCLUDE THE NECESSARY HEX HEAD BOLTS AND SET SCREWS.
5. THE "v" DENOTES MACHINED SURFACE.
6. VARIATION IN LID LETTERING (SEE PIPE SUMMARY) DENOTES SEWER TYPE:
 (A) STORM SEWER
 (B) SANITARY SEWER
 (C) SANITARY AND STORM SEWER
7. THE "KY" SYMBOL SHALL APPEAR ON ALL LIDS.
8. NET HEIGHT OF ADJUSTING RING (AS SPECIFIED IN CONTRACT).
9. FRAME AND LID TYPE 2 SHALL BE USED IN VEHICULAR TRAFFIC AREAS.



DETAIL OF "KY" SYMBOL

KENTUCKY DEPARTMENT OF HIGHWAYS	
FRAME AND LID TYPE 2	
STANDARD DRAWING NO. RDM-105-02	
SUBMITTED: <i>John B. Sackett</i> DIRECTOR DIVISION OF DESIGN	12-1-99 DATE
APPROVED: <i>J. M. [Signature]</i> STATE HIGHWAY ENGINEER	12-1-99 DATE