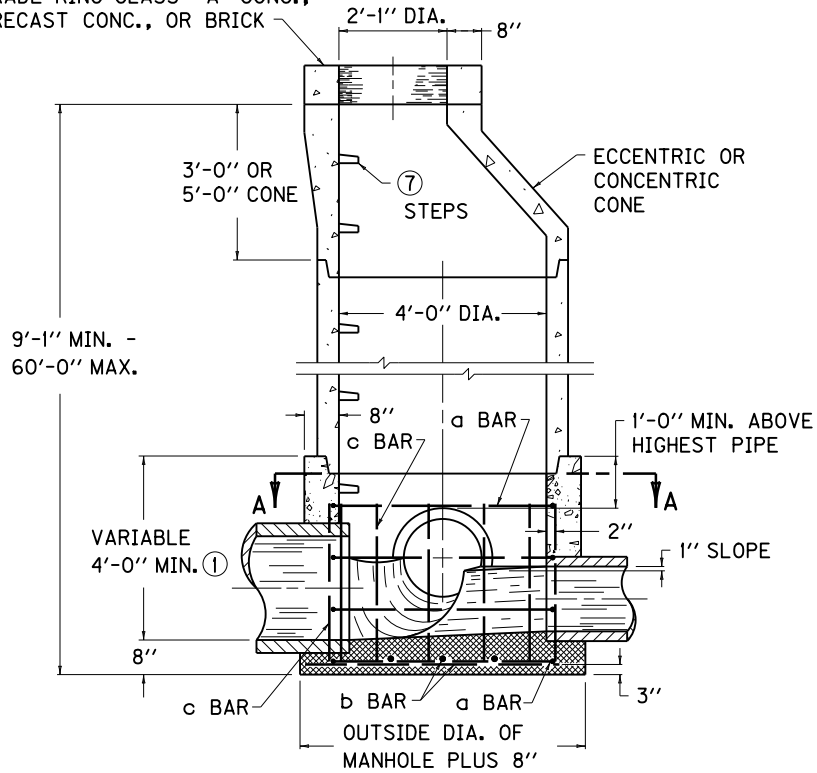


SECTION A-A

GRADE RING-CLASS "A" CONC.,  
PRECAST CONC., OR BRICK



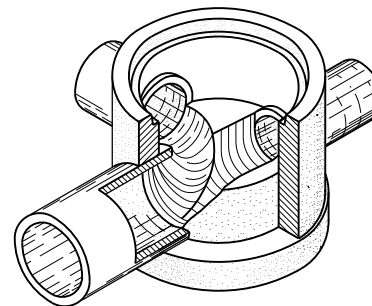
SECTIONAL ELEVATION

NOTES

- SEE CURRENT STD. DWG. [RDM-105](#) FOR CASTINGS TO BE USED IN TRAFFIC AREAS AND CURRENT STD. DWG. [RDM-100](#) FOR CASTINGS TO BE USED IN NON-TRAFFIC AREAS. THE MANHOLE MAY BE PRECAST CONCRETE PIPE SECTIONS OR CAST-IN-PLACE CONCRETE ⑤.
- ① WHEN THE MANHOLE HEIGHT IS 25'-1" OR GREATER A CAST-IN-PLACE BASE WILL BE REQUIRED AS DETAILED. THIS PORTION OF CAST-IN-PLACE BASE ALWAYS REQUIRED. REINFORCEMENT BARS ARE NOT REQUIRED WHEN MANHOLE HEIGHT IS LESS THAN 12'-0".
  - ② THE NUMBER OF BARS DEPEND UPON HEIGHT OF BASE.
  - ③ LENGTH OF BARS DEPEND UPON HEIGHT. BAR LOCATIONS SHALL BE BENT AND/OR SHIFTED TO MISS PIPE.
  4. SEE PROPOSAL NOTES OR STANDARD SPECIFICATIONS FOR ADDITIONAL REQUIREMENTS.
  - ⑤ CAST-IN-PLACE MANHOLE LIMITATIONS: FROM 9'-1" TO 16'-0" USE 8" WALL THICKNESS, FROM 16'-1" TO 25'-0" USE 12" THICK WALLS.
  6. THE MAXIMUM SIZE OF INTERCEPTED PIPE SHALL BE 27".
  - ⑦ SEE CURRENT STD. DWG. [RDB-430](#) FOR STEP TYPE, SPACING AND DETAILS.

STEEL REINFORCEMENT

NO. 4 BAR	QTY.	LENGTH	SPACING	TYPE
a	②	13'-8"	APPROX.	CIR. 4'-4" DIA.
b	6	4'-6"	1'-0"	STR.
c	13	③	O.C.	STR.



ISOMETRIC OF BASE

USE WITH CUR. STD. DWG.  
[RDB-430](#)

KENTUCKY  
DEPARTMENT OF HIGHWAYS

MANHOLE  
TYPE B

STANDARD DRAWING NO. RDM-005-05

SUBMITTED: *John B. Sackett* 12-1-99  
DIRECTOR, DIVISION OF DESIGN DATE  
APPROVED: *J. M. Powell* 12-1-99  
STATE HIGHWAY ENGINEER DATE