

APPROX. QTYS. FOR 25' CONC. MEDIAN BARRIER

INLET	W	BAR a		BAR b		STEEL LBS. (2)	CONC. CU. YDS.
		QTY.	LENGTH	QTY.	LENGTH		
TYPE 12	12"	13	11'-6"	15	24'-8"	542	5.16
TYPE 14	14"	13	12'-0"	15	24'-8"	549	5.8

(2) STEEL QUANTITIES ARE FOR CAST-IN-PLACE WALL.

NOTES
METHOD OF MEASUREMENT AND BASIS OF PAYMENT

THE BID ITEM SHALL BE :
 CONCRETE MEDIAN BARRIER INLET TYPE ☆ ⊗ ⊕ △ - 50
 ☆ = 12 OR 14 DEPENDING ON W WIDTH
 ⊗ = A FOR SAG VERTICALS ⊕ = 1 FOR OPENING ON ONE SIDE OF BOX INLET
 B FOR STRAIGHT GRADE 2 FOR OPENING ON BOTH SIDES OF BOX INLET
 △ (b) = BOTTOM PHASE (+) = TOP PHASE
 NO (b) OR (+) SUFFIX INDICATES COMPLETE INLET.

MATERIAL REQUIREMENTS

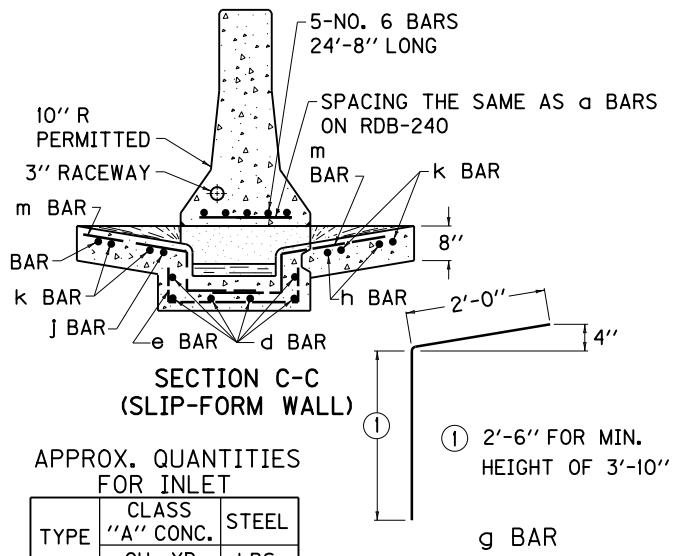
ALL STEEL REINFORCEMENT BARS SHALL BE NO. 5 BARS.
 THE RATE OF INCREASE OF ADDITIONAL CLASS "A" CONCRETE PER FOOT OF HEIGHT ABOVE THE MINIMUM 3'-10" SHALL BE 0.35 CUBIC YARDS FOR A TYPE 12 AND 0.37 CUBIC YARDS FOR A TYPE 14 BOX INLET.

CONSTRUCTION REQUIREMENTS

PLACE ALL STEEL REINFORCEMENT 2" MINIMUM FROM OUTSIDE FACE OF WALL, EXCEPT AS OTHERWISE SHOWN.
 SEE CURRENT STD. DWG. RDB-420 FOR STEEL REINFORCEMENT IN BOTTOM OF BOX WHEN H = 8'-0" TO 15'-0".
 USE CHAMBER DIMENSIONS TO BEST FIT AND EQUALLY SPACE REINFORCEMENT STEEL.
 A SYMMETRICAL WALL IS DETAILED, AN ASYMMETRICAL WALL MAY BE REQUIRED (SEE PLANS).

REINFORCEMENT BARS FOR BOX INLET

BAR	BOX TYPE							
	A1				B1			
	A1	A2	A1	A2	B1	B2	B1	B2
	QTY.	LENGTH	QTY.	LENGTH	QTY.	LENGTH	QTY.	LENGTH
TYPE 12								
e	10	3'-9"	9	3'-9"				
TYPE 14								
e	10	3'-11"	9	3'-11"				
ALL TYPES								
d	12	4'-3"	6	7'-5"				
f	8	1'-0"	8	1'-0"				
g	2	6	4'-6"	1	5	4'-6"		
h	0	2	0	9'-8"	0	2	0	9'-8"
J	4	3'-3"	2	7'-0"				
k	4	8	2'-0"	4	8	2'-0"		
m	6	12	4'-1"	6	12	4'-1"		



APPROX. QUANTITIES FOR INLET

TYPE	CLASS "A" CONC. CU. YD.	STEEL LBS.
12A 1	3.96	158
12B 1	3.89	143
14A 1	4.09	159
14B 1	3.98	145

FOR APPROX. QUANTITIES FOR TYPE A2 OR B2 (ALL "W" WIDTHS) ADD 1.48 CU. YDS. CONCRETE AND 73 LBS. STEEL.

KENTUCKY
 DEPARTMENT OF HIGHWAYS
 CONCRETE MEDIAN BARRIER BOX INLET (50" TALL WALL)
 STANDARD DRAWING NO. RDB-241-01
 SUBMITTED: *David Kest* DIRECTOR DIVISION OF DESIGN 11-21-07 DATE
 APPROVED: *November Mathews* STATE HIGHWAY ENGINEER 11-21-07 DATE