

① ADDITIONAL STEEL REINFORCEMENT FOR PIPE CHAMBER  
( H = 8' TO 15', GRADE CONDITION )

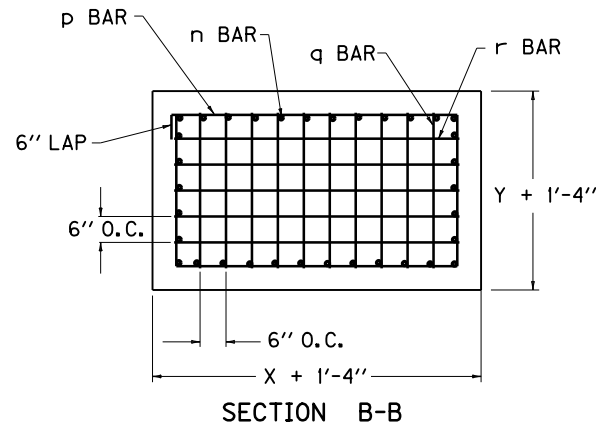
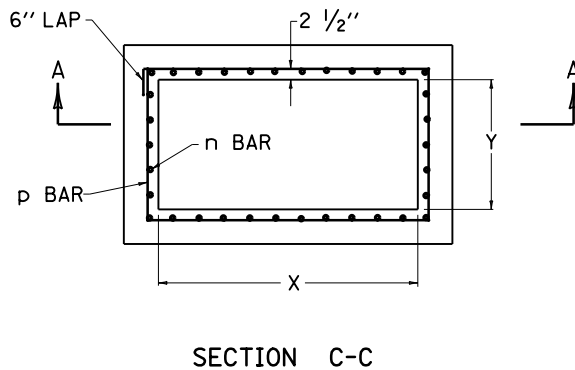
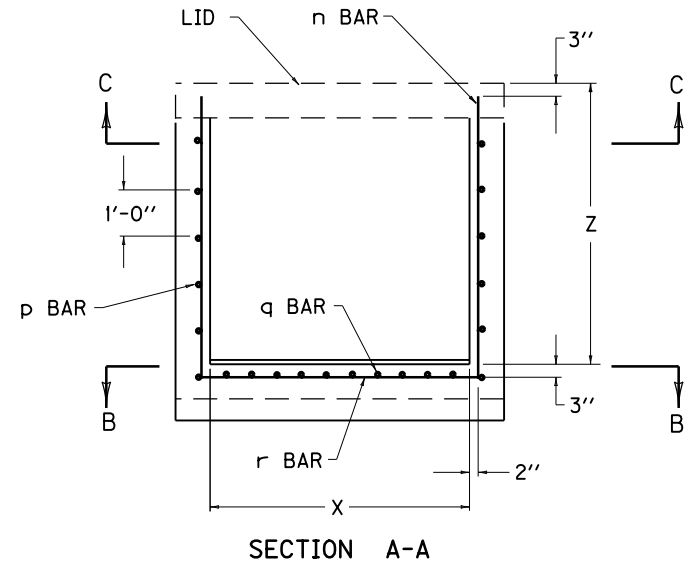
SIZE ②		NO. 5 STEEL BARS										
X	Y	BAR n ③		BAR p ④		BAR q		BAR r		LBS. ⑤		
		QTY.	LIN. FT.	QTY.	LIN. FT.	QTY.	LIN. FT.	QTY.	LIN. FT.	TOTAL	⑥	
2'-3"	2'-0"	20	6'-0"	6	10'-9"	4	2'-6"	4	2'-9"	214	32	
	2'-6"	22			11'-9"		3'-0"		5	2'-9"	238	35
2'-6"	2'-0"	24			11'-3"	5	2'-6"	4	3'-0"	234	258	38
	2'-6"				12'-3"		3'-0"		5	3'-6"		
3'-0"	2'-0"	26			13'-3"	6	2'-6"	4	3'-6"	283	281	41
	2'-6"				14'-3"		3'-0"		5	4'-0"		
3'-6"	2'-0"	28			14'-3"	7	2'-6"	4	4'-0"	304	332	44
	2'-6"				15'-3"		3'-0"		5	4'-6"		
4'-0"	2'-0"	30			15'-3"	8	2'-6"	4	5'-0"	356	351	50
	2'-6"				16'-3"		3'-0"		5	5'-6"		
4'-6"	2'-0"	32	16'-3"	9	2'-6"	4	5'-6"	381	53	53		
	2'-6"		17'-3"		3'-0"						5	
5'-0"	2'-0"	34	17'-3"	10	2'-6"	4	5'-6"	381	53	53		
	2'-6"		3'-0"		5							

① ADDITIONAL STEEL REINFORCEMENT FOR PIPE CHAMBER  
( H = 8' TO 15', SAG CONDITION )

SIZE ②		NO. 5 STEEL BARS									
X	Y	BAR n ③		BAR p ④		BAR q		BAR r		LBS. ⑤	
		QTY.	LIN. FT.	QTY.	LIN. FT.	QTY.	LIN. FT.	QTY.	LIN. FT.	TOTAL	⑥
4'-11"	2'-0"	32	6'-0"	6	16'-1"	10	2'-6"	4	5'-5"	350	50
	2'-6"	34			17'-1"		3'-0"		5	5'-5"	379

NOTES

- ① BASED ON "Z" AS EQUAL TO 6'-0"
- ② SEE CUR. STD. DWG. RDB-030 FOR LOCATION AND DIMENSIONS.
- ③ LENGTH OF n BAR IS ALWAYS SAME AS "Z" DIMENSION.
- ④ ADD OR SUBTRACT ONE p BAR PER EVEN FOOT VARIANCE FROM 6'-0" Z .
- ⑤ NO DEDUCTIONS HAVE BEEN MADE FOR PIPE .
- ⑥ ADD OR SUBTRACT LBS. STEEL PER FT. VARIANCE FROM 6'-0" Z .
7. REINFORCEMENT SHALL HAVE A CLEAR DISTANCE OF 2" FROM THE FACE UNLESS OTHERWISE SHOWN .



USE WITH CUR. STD. DWGS.:  
RDI-200, RDB-014, RDB-030,  
RDB-031, RDB-032, RDB-033,  
RDB-034

KENTUCKY DEPARTMENT OF HIGHWAYS	
DROP BOX INLET TYPE 16 ( ADDITIONAL STEEL- CHAMBER )	
STANDARD DRAWING NO. RDB-035-03	
SUBMITTED: <i>John B. Sackett</i>	12-1-99
DIRECTOR, DIVISION OF DESIGN	DATE
APPROVED: <i>J. M. Youell</i>	12-1-99
STATE HIGHWAY ENGINEER	DATE