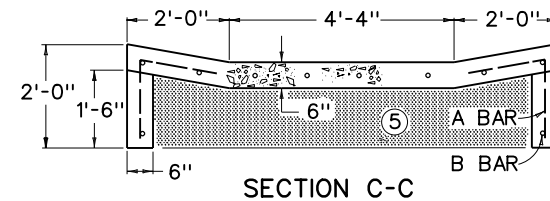
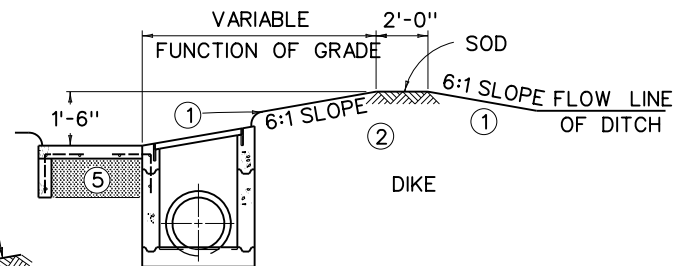
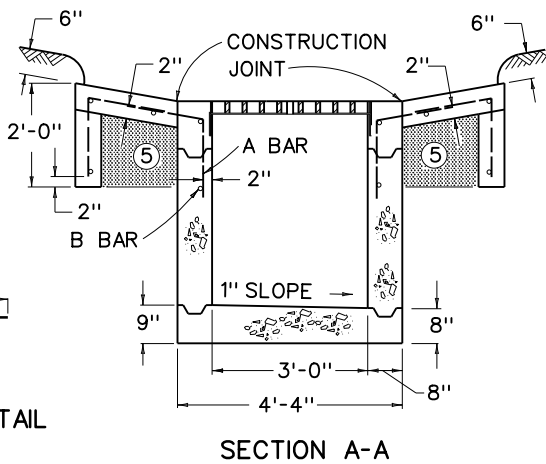
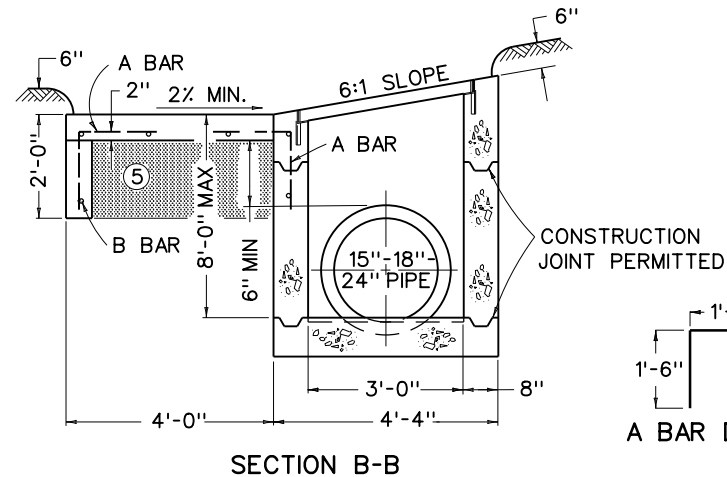


STR. STEEL WTS.	
1 GRATE	TOTAL FRAME
132.5 LBS	265 LBS
	51 LBS



BILL OF REINFORCEMENT

BAR	NO. OF BARS	SIZE	LENGTH	APPROX. SPACING
A	40 OR 56	#5	3'-0"	1'-0" C TO C
B	25 OR 40	#4	4'-0"	AS SHOWN

BASIS OF PAYMENT

DOWNSTREAM DIKE COMPLETE AND IN PLACE IS INCLUDED IN THE CONTRACT UNIT PRICE OF THE INLET. SODDING IS NOT INCLUDED.

CONSTRUCTION REQUIREMENTS

- 6:1 SLOPES ARE WITH REFERENCE TO DITCH GRADE.
- WHEN A BOX INLET IS PLACED IN A SAG, OMIT THE EARTH DIKE AND LONGITUDINAL SLOPE OF THE GRATE AND PROVIDE A CONCRETE APRON ON EACH SIDE OF THE INLET.
- RATE OF INCREASE OR DECREASE 0.36 CU. YD. PER FOOT IN HEIGHT.
- DEDUCT APPROX. 0.1 CU. YD. OF CONCRETE PER PIPE.
- COMPACT THIS VOLUME WITH D.G.A. BASE OR GRAVEL BASE AND INCLUDE IN THE UNIT PRICE OF THE BOX.

NOTES

APPROX. QUANTITIES

TYPE	CONCRETE 3'-9" BOX	REINF. STEEL
SAG	4.4 CU. YD. (4)	282 LBS
GRADE	3.4 CU. YD. (4)	192 LBS

NOTE: PRIMARY USE (ROADSIDE DITCH LOCATION)

**KENTUCKY
DEPARTMENT OF HIGHWAYS**

**DROP BOX
INLET
TYPE 1**

STANDARD DRAWING NO. RDB-001-11

SUBMITTED: *John B. Sackett* DIRECTOR, DIVISION OF DESIGN 12-1-99 DATE

APPROVED: *J. M. [Signature]* STATE HIGHWAY ENGINEER 12-1-99 DATE