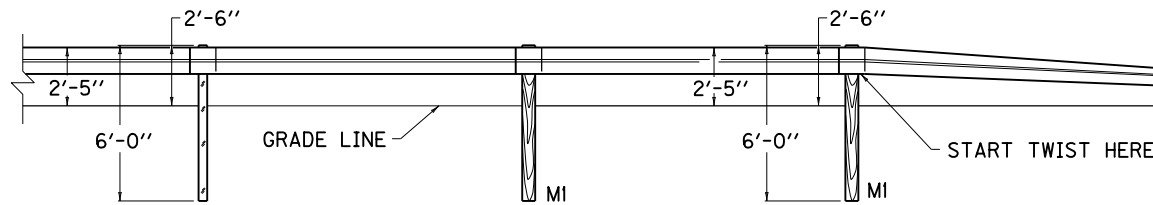


PLAN VIEW

4 - 7/8" DIA. x 1'-6" MIN. ANCHOR BOLTS
 ---OR---
 THREADED RODS (HEX NUTS AND FLAT WASHERS)

4" TAPER (TYP) 3'-0" SQ.
 1"
 2'-0"
 3'-8" SQ.



ELEVATION VIEW

NOTES

METHOD OF MEASUREMENT AND BASIS OF PAYMENT

GUARDRAIL END TREATMENT TYPE 7 SHALL BE TO THE PAY LIMITS AS DETAILED AND THE CONTRACT UNIT PRICE EACH SHALL INCLUDE TERMINAL SECTION NO. 2, STEEL "W" BEAM GUARDRAIL (SINGLE FACE), GUARDRAIL POSTS MI, CONCRETE ANCHOR BLOCK, EXCAVATION, LABOR, HARDWARE AND INCIDENTALS NECESSARY FOR THE INSTALLATION.

CONSTRUCTION REQUIREMENTS

SPLICE BOLTS AT TERMINAL SECTION NO. 2 SHALL BE LOOSELY TIGHTENED AND CENTERED TO ALLOW MAXIMUM MOVEMENT DUE TO EXPANSION. ONE (1) 1/16" ROUND WASHER AND ONE (1) RECTANGULAR PLATE WASHER REQUIRED FOR EACH SPLICE BOLT, AT TERMINAL SECTION NO. 2.

① THE CONCRETE ANCHOR BLOCK MAY BE PRECAST OR CAST-IN-PLACE. WHEN THE CONCRETE ANCHOR BLOCK IS CAST-IN-PLACE FORMING OF THE SIDES SHALL BE REQUIRED.

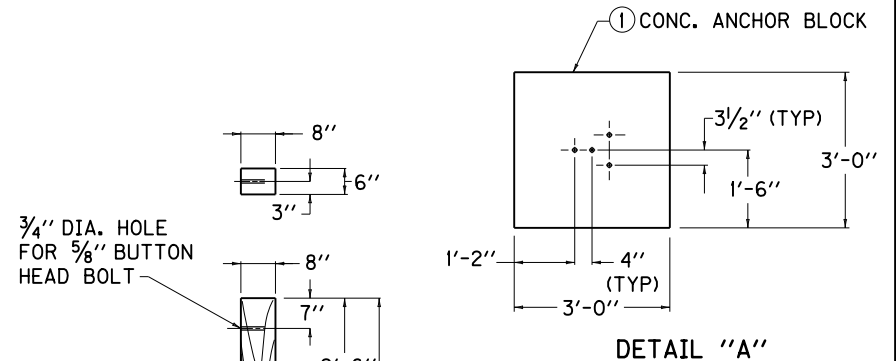
② ON ALL NEW ROADWAYS THE OFFSET DISTANCE SHALL BE 4'-0". ON ALL EXISTING ROADWAYS THE OFFSET DISTANCE MAY VARY FROM ZERO FEET MINIMUM TO A DESIRABLE 4'-0" MAXIMUM.

MATERIAL REQUIREMENTS

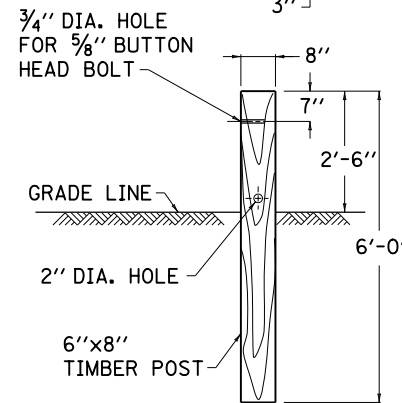
SEE CURRENT STD. DWG. RBR-001, RBR-005, RBR-010, AND RBR-015 FOR APPLICABLE DETAILS AND SPECIFICATIONS.

APPROX. QUANTITY FOR ANCHOR BLOCK: 0.83 CU. YD. CLASS "A" CONCRETE FOR TYPE 7 INSTALLATION.

3. THIS GUARDRAIL END TREATMENT IS NOT FOR USE ON APPROACH END ON HIGH SPEED NHS



DETAIL "A"



MI POST DETAIL

KENTUCKY DEPARTMENT OF HIGHWAYS	
GUARDRAIL END TREATMENT TYPE 7	
STANDARD DRAWING NO. RBR-050-06	
SUBMITTED: <i>[Signature]</i>	12-2-11 DATE
DIRECTOR, DIVISION OF DESIGN	DATE
APPROVED: <i>[Signature]</i>	12-2-11 DATE
STATE HIGHWAY ENGINEER	DATE