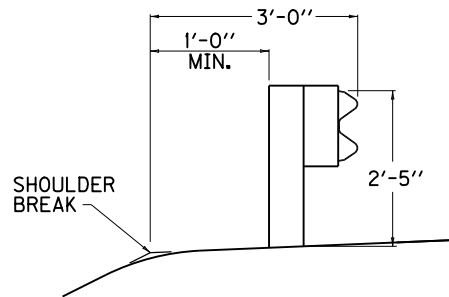
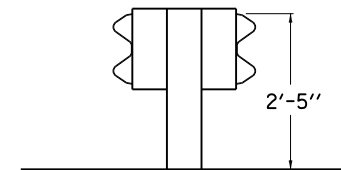


APPROACH ROADS

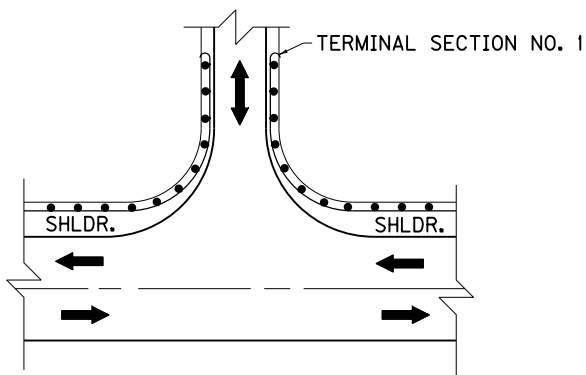
- ~ NOTES ~
1. FOR END TREATMENT TYPE 4A USE CUR. STD. DWG. [RBR-035](#) FOR OFFSETS.
 2. THE MINIMUM LENGTH OF GUARDRAIL, INCLUDING THE END TREATMENT, PRECEDING A FIXED OBJECT IS 200 FEET: (LENGTH MAY BE REDUCED SHOULD FIELD CONDITIONS WARRANT).



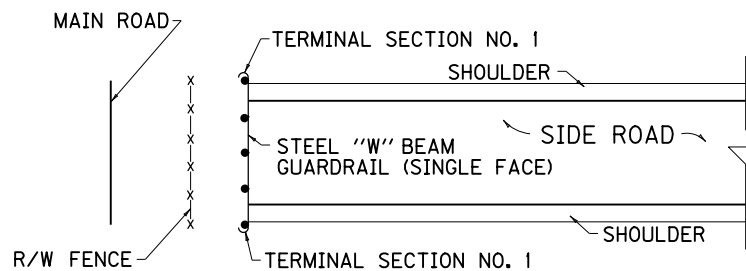
NORMAL GUARDRAIL INSTALLATION



TYPICAL DOUBLE FACE GUARDRAIL INSTALLATION



ENTRANCES



GUARDRAIL USED AS A BARRICADE

USE WITH CUR. STD. DWG. [RBI-002](#)

KENTUCKY DEPARTMENT OF HIGHWAYS	
TYPICAL GUARDRAIL INSTALLATIONS	
STANDARD DRAWING NO. RBI-001-10	
SUBMITTED: <i>[Signature]</i>	12-2-11 DATE
DIRECTOR, DIVISION OF DESIGN	
APPROVED: <i>[Signature]</i>	12-2-11 DATE
STATE HIGHWAY ENGINEER	