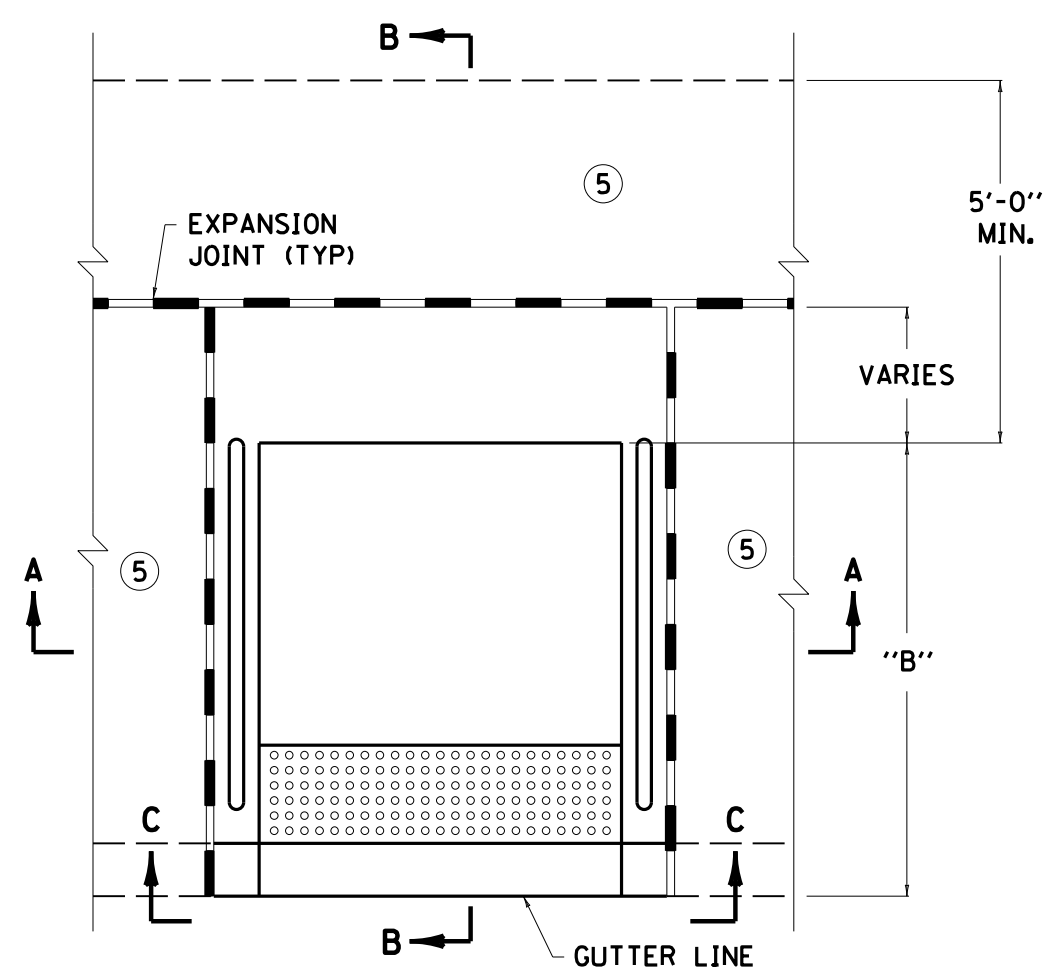


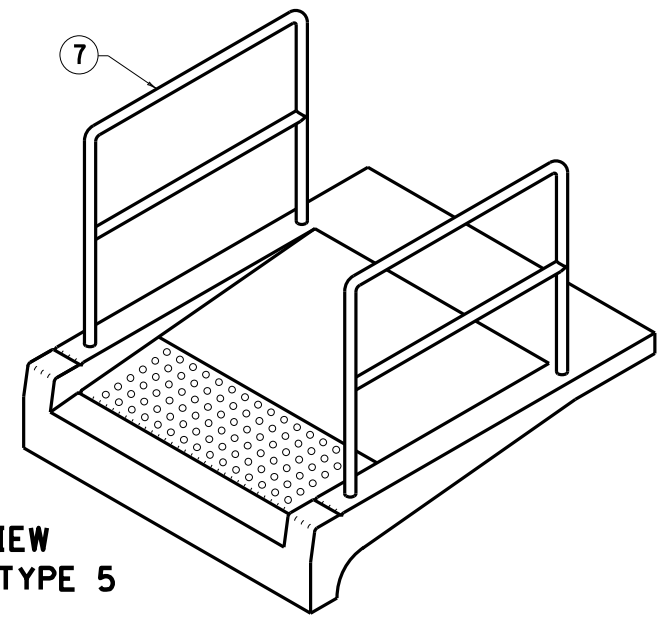
NOTES

1. EXISTING SIDEWALK AND CURB SHALL BE REMOVED TO THE LIMITS AS DESIGNATED BY THE ENGINEER.
2. WHERE EXISTING JOINTS ARE LOCATED MORE THAN 2'-0" FROM THE RAMP LIMITS SHOWN, THE CONTRACTOR SHALL SAW CUT THE SIDEWALK AND CURB PRIOR TO REMOVAL.
3. A BROOM FINISH OR EQUAL NON-SKID FINISH IS REQUIRED.
- ④ CUT GROOVE TO CONFORM TO THE ADJACENT CURB.
- ⑤ EXISTING SIDEWALK.
- ⑥ THE LENGTHS SHOWN ARE MINIMUMS. IF ADEQUATE SPACE IS AVAILABLE A MINIMUM SLOPE OF 12:1 IS DESIRABLE.
- ⑦ HANDRAIL TYPE A-1 MAY BE ELIMINATED PROVIDED ADEQUATE SPACE IS AVAILABLE TO CONSTRUCT 10:1 RAMP SIDE SLOPES AS SHOWN IN SECTION C-C.
- 8 ALL SIDEWALK RAMPS REQUIRE DETECTABLE WARNINGS.

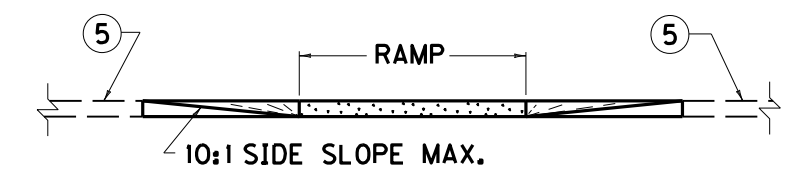
BID ITEM AND UNIT TO BID
 SIDEWALK-4 INCH CONCRETE - SOYD
 HANDRAIL-TYPE A-1 - LF (SEE CURRENT STD. DWG. RGX-030)



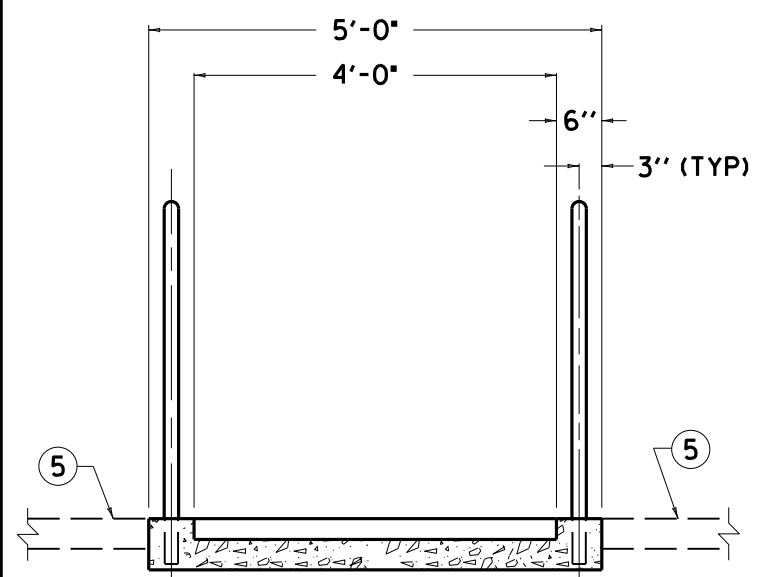
**PLAN VIEW
SIDEWALK RAMP TYPE 5**



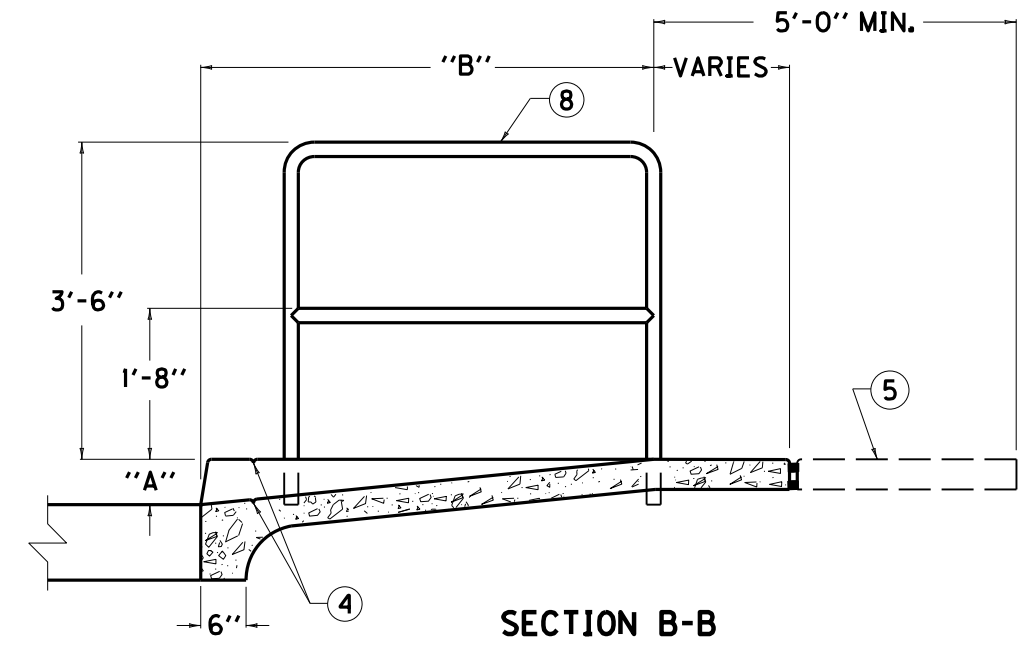
**ISOMETRIC VIEW
SIDEWALK RAMP TYPE 5**



**SECTION C-C ⑧
(ALTERNATE TO HANDRAIL TYPE B)**



SECTION A-A



SECTION B-B

RAMP HEIGHT "A"	⑥ RAMP LENGTH "B"
≤ 3"	2'-0"
> 3" ≤ 6"	5'-0"

USE WITH CURRENT STD. DWG
RGX-040

KENTUCKY
DEPARTMENT OF HIGHWAYS

**SIDEWALK RAMP
WITH HANDRAIL**

SUBMITTED *William S. Gallo* DATE 7-30-14
030

FILE NAME: C:\USERS\JEFF.LAIL\DESKTOP\ADA SIDEWALK RAMP AND HANDRAIL A-1.DGN
 USER: jeff.lail
 DATE PLOTTED: July 30, 2014
 E-SHEET NAME:
 MicroStation v8.11.7.443