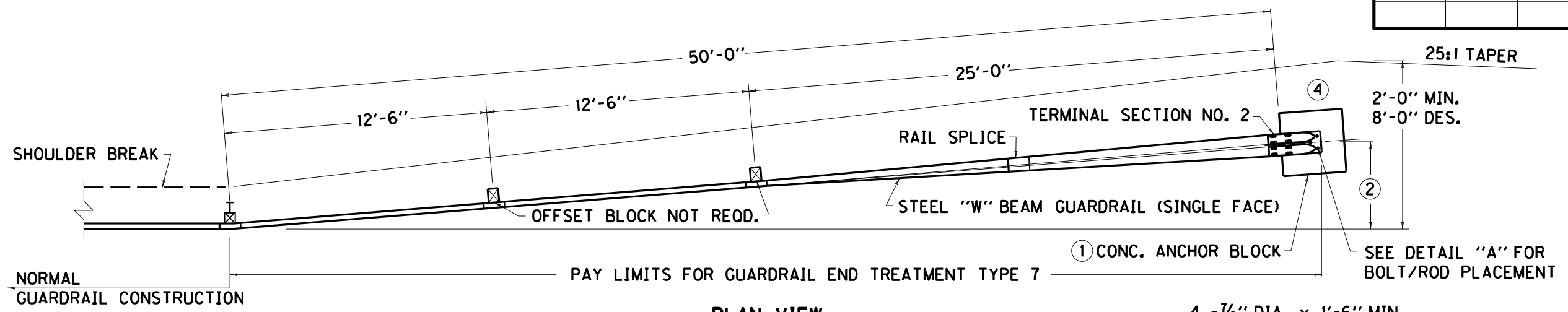
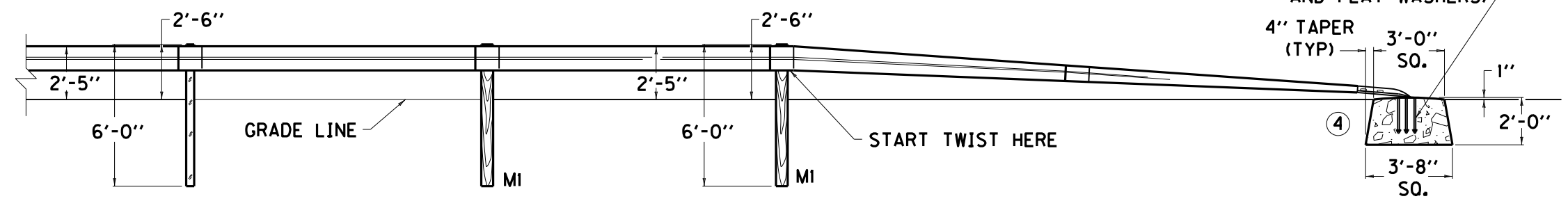


FILE NAME: C:\USERS\JEFF.LAIL\DESKTOP\TYPE 7 RBR-050.DGN
 USER: jeff.lail
 DATE PLOTTED: April 15, 2014
 E-SHEET NAME:
 MicroStation v8.11.7.443



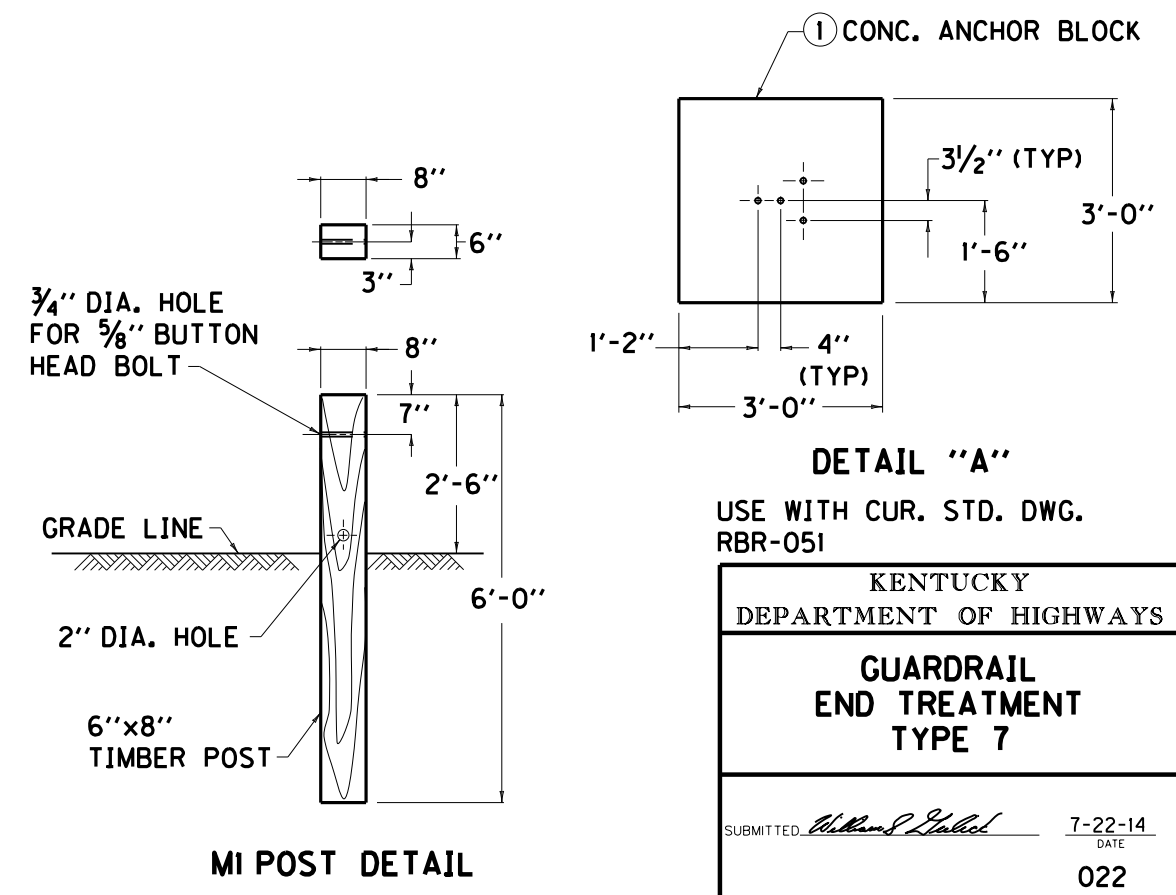
PLAN VIEW



ELEVATION VIEW

NOTES

- METHOD OF MEASUREMENT AND BASIS OF PAYMENT**
 GUARDRAIL END TREATMENT TYPE 7 SHALL BE TO THE PAY LIMITS AS DETAILED AND THE CONTRACT UNIT PRICE EACH SHALL INCLUDE TERMINAL SECTION NO. 2, STEEL "W" BEAM GUARDRAIL (SINGLE FACE), GUARDRAIL POSTS MI, CONCRETE ANCHOR BLOCK, EXCAVATION, LABOR, HARDWARE AND INCIDENTALS NECESSARY FOR THE INSTALLATION.
- BID ITEM AND UNIT TO BID:**
 GUARDRAIL END TREATMENT TYPE 7 - EACH
- CONSTRUCTION REQUIREMENTS**
 SPLICE BOLTS AT TERMINAL SECTION NO. 2 SHALL BE LOOSELY TIGHTENED AND CENTERED TO ALLOW MAXIMUM MOVEMENT DUE TO EXPANSION. ONE (1) 1/16" ROUND WASHER AND ONE (1) RECTANGULAR PLATE WASHER REQUIRED FOR EACH SPLICE BOLT. AT TERMINAL SECTION NO. 2.
- ① THE CONCRETE ANCHOR BLOCK MAY BE PRECAST OR CAST-IN-PLACE. WHEN THE CONCRETE ANCHOR BLOCK IS CAST-IN-PLACE FORMING OF THE SIDES SHALL BE REQUIRED.
 - ② THE DESIREABLE OFFSET DISTANCE FROM THE NORMAL GUARDRAIL LINE SHALL BE 4'-0". THE MINIMUM OFFSET DISTANCE FROM THE NORMAL GUARDRAIL LINE IS ZERO FEET.
- MATERIAL REQUIREMENTS**
 SEE CURRENT STD. DWG. RBR-001, RBR-005, RBR-010, AND RBR-015 FOR APPLICABLE DETAILS AND SPECIFICATIONS.
 APPROX. QUANTITY FOR ANCHOR BLOCK: 0.83 CU. YD. CLASS "A" CONCRETE FOR TYPE 7 INSTALLATON.
3. THIS GUARDRAIL END TREATMENT IS NOT FOR USE ON APPROACH END ON HIGH SPEED NHS
 - ④ SEE STANDARD DRAWING RBR-051 FOR ALTERNATE END ANCHOR.



MI POST DETAIL

DETAIL "A"
 USE WITH CUR. STD. DWG. RBR-051

KENTUCKY DEPARTMENT OF HIGHWAYS	
GUARDRAIL END TREATMENT TYPE 7	
SUBMITTED <i>William S. Galbraith</i>	DATE 7-22-14
022	