

UpdateSheetNumbers

UpdateSheetNumbers is a program to automatically number plan sheets. It reads the plan sheet information from a Microsoft Excel spreadsheet and places the information on the sheet cell in MicroStation. UpdateSheetNumbers will work with or without ProjectWise. These are the steps to setup and use UpdateSheetNumbers:

1. Setup the spreadsheet.
 - a. Copy PlanSheetNumbering.xlsx spreadsheet from the data folder in the KYTC workspace to a convenient location (i.e. the same place as the plan sheet design files.)
 - b. Enter the information in the “List of Files and Sheet Numbers” worksheet.

Item Number:	05-0305.01	County:	Franklin	Sheet Description		
Path to Design File	Design Filename	Sheet Number	Sheet Code	Top Line	Middle Line	Bottom Line
D:\Projects\us421\plansheets	layout.dgn	r1	ls			
D:\Projects\us421\plansheets	r2.dgn	r2	ts	US 421	TYPICAL SECTIONS	
D:\Projects\us421\plansheets	r2b.dgn	r2b	ts	US 421	TYPICAL SECTIONS	
D:\Projects\us421\plansheets	r2c.dgn	r2c	ts	US 421	TYPICAL SECTIONS	
D:\Projects\us421\plansheets	r2d.dgn	r2d	ts	US 421	TYPICAL SECTIONS	
D:\Projects\us421\plansheets	R3PL.dgn	r3	pl	US 421	Sta 74+00 to Sta 80+00	
D:\Projects\us421\plansheets	R4PR.dgn	r4	pf	US 421	Sta 74+00 to Sta 80+00	
D:\Projects\us421\plansheets	R5PL.dgn	r5	pl	US 421	Sta 80+00 to Sta 95+00	
D:\Projects\us421\plansheets	R6PR.dgn	r6	pf	US 421	Sta 80+00 to Sta 95+00	
D:\Projects\us421\plansheets	R7PL.dgn	r7	pl	US 421	Sta 95+00 to Sta 110+00	
D:\Projects\us421\plansheets	R8PR.dgn	r8	pf	US 421	Sta 95+00 to Sta 110+00	
D:\Projects\us421\plansheets	R9PL.dgn	r9	pl	US 421	Sta 110+00 to Sta 125+00	

Example of files on a workstation.

Item Number:	05-0305.01	County:	Franklin	Sheet Description		
Path to Design File	Design Filename	Sheet Number	Sheet Code	Top Line	Middle Line	Bottom Line
PW	layout.dgn	r1	ls			
PW	r2.dgn	r2	ts	US 421	TYPICAL SECTIONS	
PW	r2b.dgn	r2b	ts	US 421	TYPICAL SECTIONS	
PW	r2c.dgn	r2c	ts	US 421	TYPICAL SECTIONS	
PW	r2d.dgn	r2d	ts	US 421	TYPICAL SECTIONS	
PW	R3PL.dgn	r3	pl	US 421	Sta 74+00 to Sta 80+00	
PW	R4PR.dgn	r4	pf	US 421	Sta 74+00 to Sta 80+00	
PW	R5PL.dgn	r5	pl	US 421	Sta 80+00 to Sta 95+00	
PW	R6PR.dgn	r6	pf	US 421	Sta 80+00 to Sta 95+00	
PW	R7PL.dgn	r7	pl	US 421	Sta 95+00 to Sta 110+00	
PW	R8PR.dgn	r8	pf	US 421	Sta 95+00 to Sta 110+00	
PW	R9PL.dgn	r9	pl	US 421	Sta 110+00 to Sta 125+00	

Example of files in ProjectWise.

B1 – enter the Item Number

D1 – enter the County

A3 – enter the path to the design file. If the file is in ProjectWise enter PW.

B3 – enter the design file name. If the file is in ProjectWise copy a URN link to the design file.

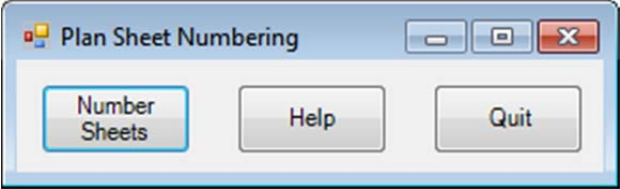
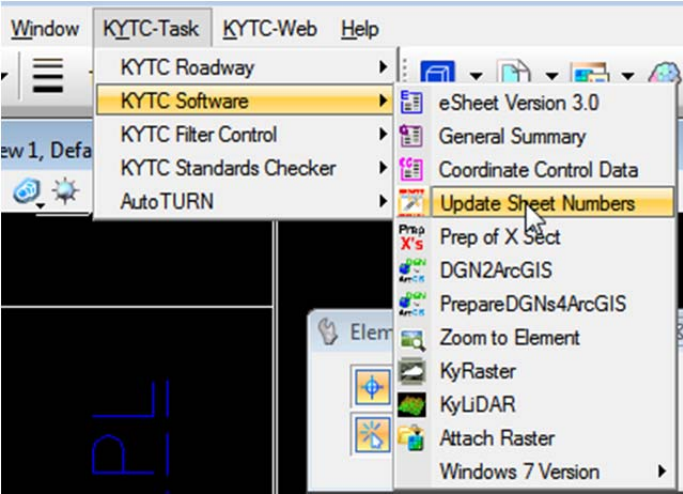
C3 – enter the sheet number.

D3 – enter the type of sheet.

E3, F3, and G3 – enter the description of the sheet. These are the three enter data fields at bottom right of the plan sheet. There is a limit of 34 characters for each description. If the description is more than 34 characters the text in Excel will turn red to indicate the text will not fit in the enter data field. UpdateSheetNumbers will automatically convert all the text to upper case.

c. Do not leave blank lines in the list of plan sheet information. UpdateSheetNumbers will stop when it reaches the first empty cell in column A.

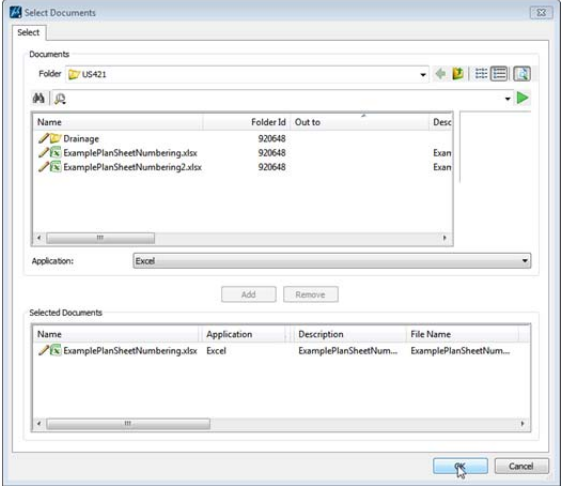
2. Open a design file and start UpdateSheetNumbers.



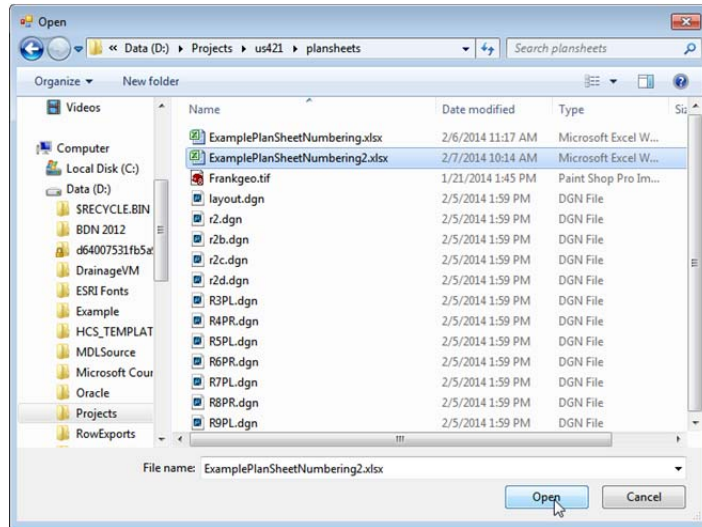
3. Click the Number Sheets button.

4. Select the Excel workbook.

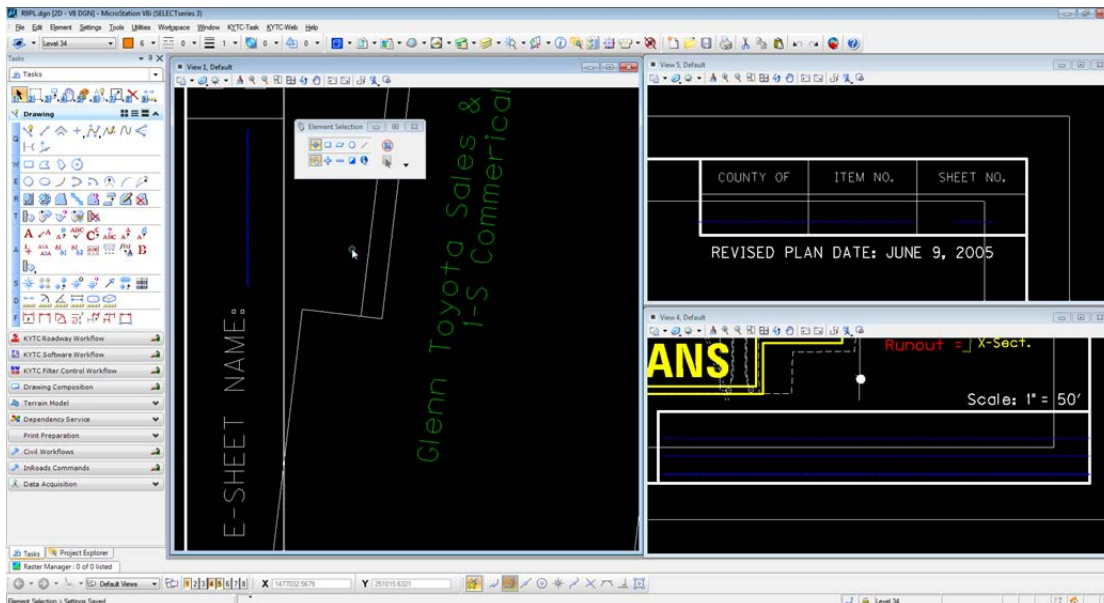
a. Example of workbook in ProjectWise.



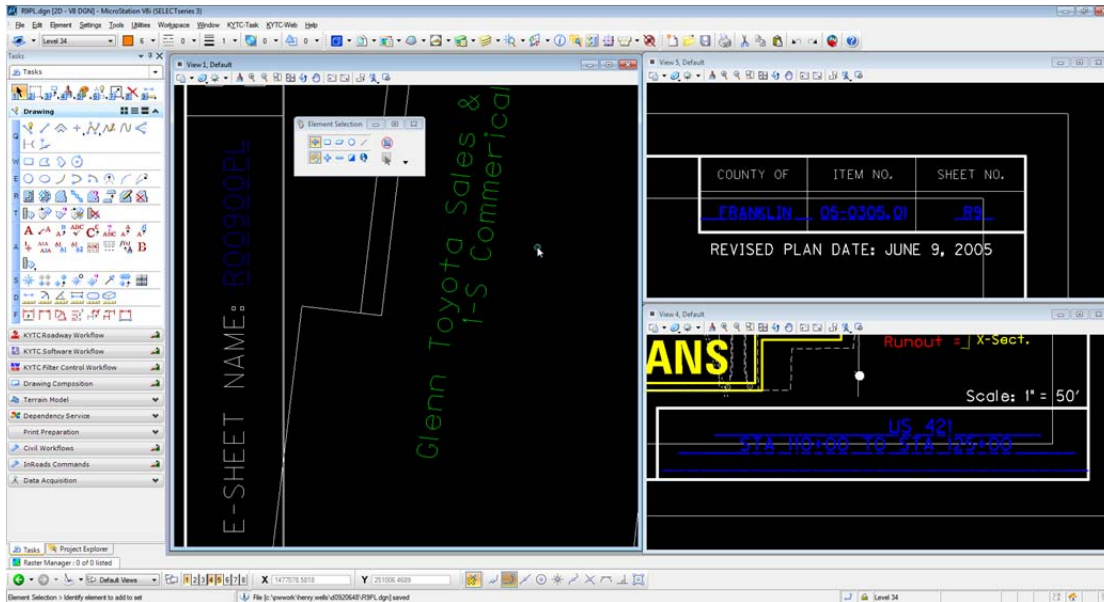
b. Example of workbook on workstation.



Design file before:



Design file after:



Some important things to remember:

If the design files are in ProjectWise be sure to click the Check In button for each design file or the changes will be lost.

UpdateSheetNumbers only scans the model that displays when the design file is open.

UpdateSheetNumbers does not support design files with multiple models.

UpdateSheetNumbers will only work on design files with one sheet cell. If there are multiple sheet cells in the design file, there will be unexpected results.