

# Coordinate Control Data Application

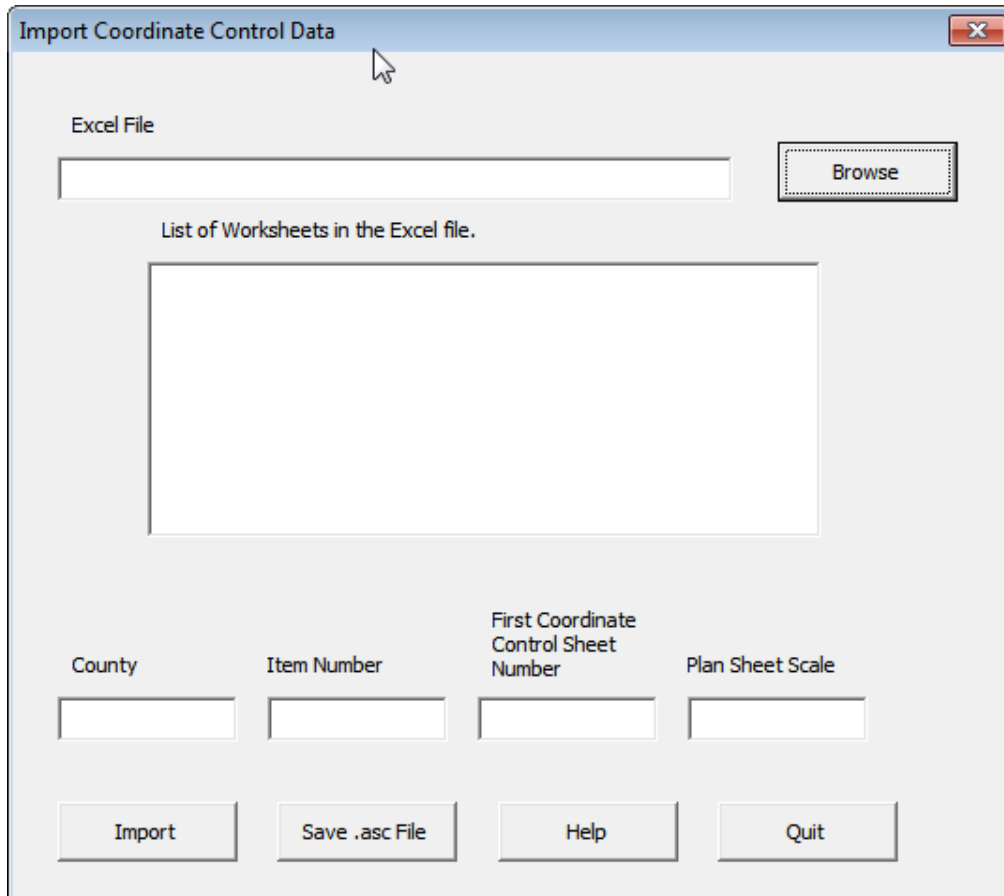
The CoordControlData application opens an Excel file, creates a plan sheet, imports the spreadsheet data, places the data in a table on the plan sheet, and fills in the County, Item Number, Sheet Number, Scale, Descriptions, and eSheet name.

The CoordControlData application places the data for 34 point in a table. If there are more than 34 points a second table will be created on the plan sheet. Each table is a graphic group. CoordControlData will also create a new plan sheet if 3 or more tables are needed. The sheet number and eSheet name will automatically be incremented for each plan sheet.

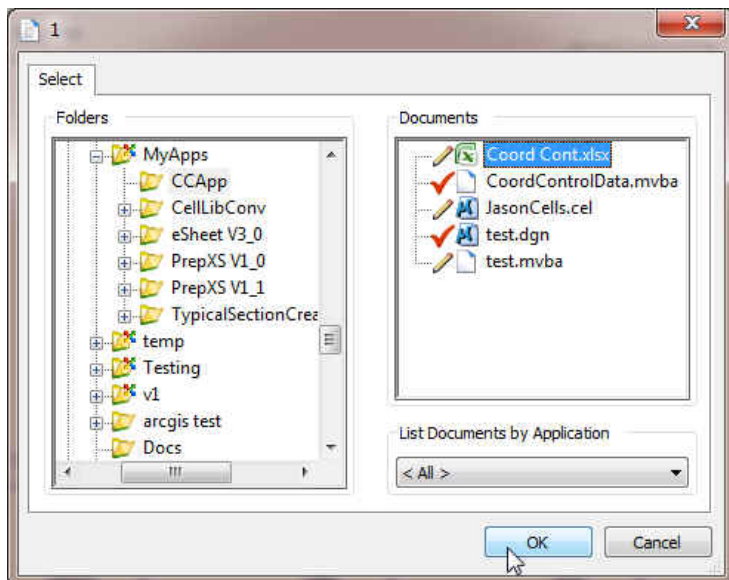
First, make sure that your Excel spreadsheet is set up like this:

	A	B	C	D	E	F	G	H
1	Point	Description	Northing	Easting	Elevation	Station	Offset	
2	POB	KY 168	344556.295	2105120.980		100+00.00		
3	PC	KY 168	344647.418	2105149.156		100+95.38		
4	PI	KY 168	344731.191	2105175.059		101+83.07		
5	PT	KY 168	344818.877	2105174.815		102+69.41		
6	PC	KY 168	344825.667	2105174.796		102+76.20		
7	PI	KY 168	345124.034	2105173.966		105+74.57		
8	PT	KY 168	345239.410	2104898.808		108+03.14		
9	PC	KY 168	345241.317	2104894.259		108+08.07		
10	PI	KY 168	345258.588	2104853.069		108+52.74		
11	PT	KY 168	345264.108	2104808.746		108+96.85		
12	PC	KY 168	345273.813	2104730.811		109+75.38		
13	PI	KY 168	345280.065	2104680.604		110+25.98		
14	PT	KY 168	345295.372	2104632.381		110+76.29		
15	POE	KY 168	345295.844	2104630.895		110+77.85		
16	POB	SHADOWLAWN	345194.654	2104980.577		20+00.00		
17	PC	SHADOWLAWN	345219.834	2105024.212		20+50.38		
18	PI	SHADOWLAWN	345272.902	2105116.175		21+56.56		
19	PT	SHADOWLAWN	345320.298	2105211.186		22+62.67		
20	PT	SHADOWLAWN	345320.298	2105211.186		22+62.67		
21	POE	SHADOWLAWN	345346.932	2105264.575		23+22.33		
22	POB	WOODWARD	345009.912	2105134.787		10+00.00		
23	PC	WOODWARD	345007.961	2105236.157		11+01.39		
24	PI	WOODWARD	345006.106	2105332.529		11+97.78		
25	PT	WOODWARD	344993.679	2105428.115		12+93.97		
26	POE	WOODWARD	344990.366	2105453.600		13+19.67		
27	CP #1	Nail	344876.070	2105189.520	551.76	103+24.76	17.58	
28	CP #2	Nail	345201.470	2105042.200	555.90	106+66.94	42.86	
29	CP #3	Nail	345238.260	2104938.880	560.49	107+66.98	15.94	
30	CP #900	Nail	345116.090	2105087.840	551.65	105+79.52	15.70	
31	CP #950	Nail	344771.601	2105189.896	553.49	102+23.39	16.84	
32	CP #951	Nail	344987.722	2105286.416	557.61	104+02.29	134.88	
33	CP #952	Nail	344869.113	2105094.969	579.88	103+29.02	-77.14	
34	CP #954	Nail	345458.075	2105104.223	587.94	107+39.02	288.57	
35	CP #955	Nail	345314.443	2104945.825	564.75	107+91.13	87.57	

Then, open an empty design file in MicroStation and start the CoordControlData application. This is what the application looks like.

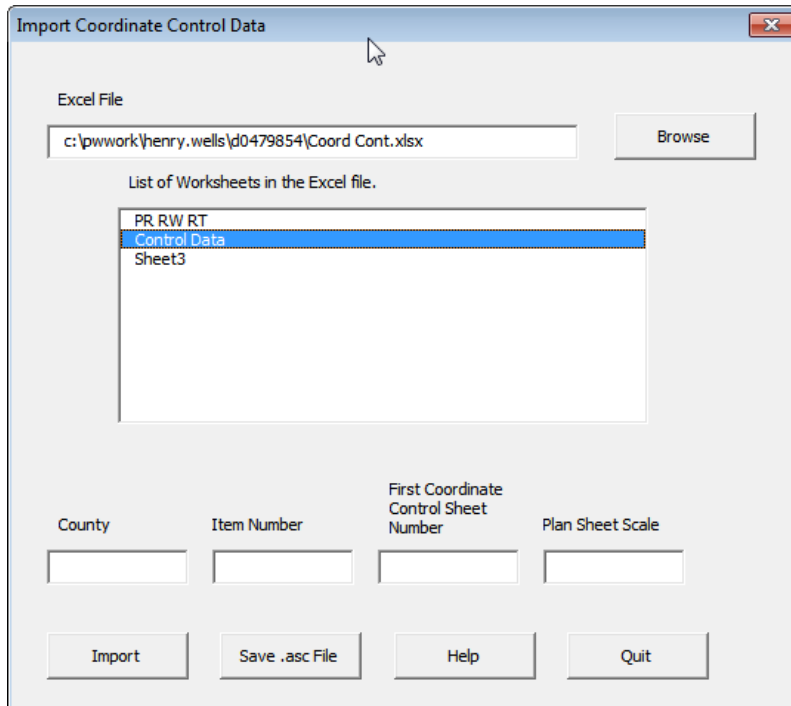


Click the browse button...



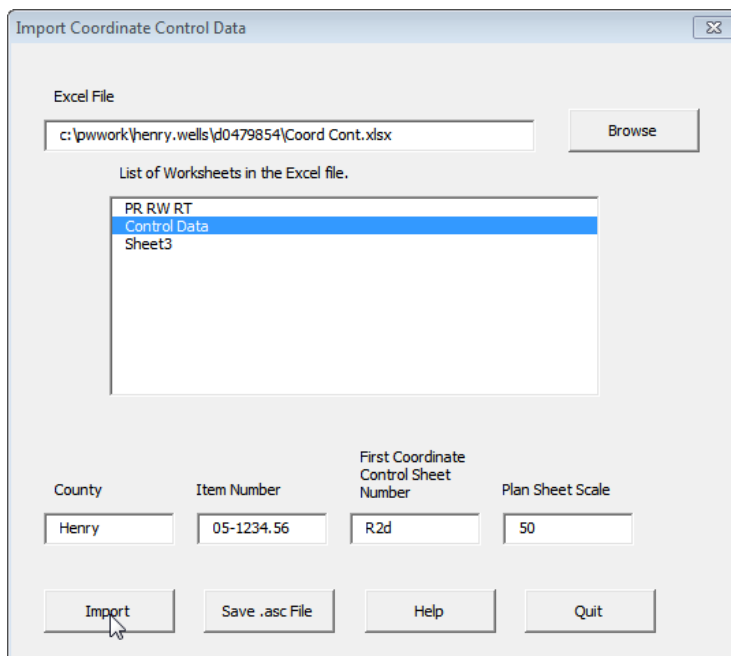
Select a file from ProjectWise or click cancel to select a file from your workstation.

The list box will populate with all the worksheets in the Excel file.



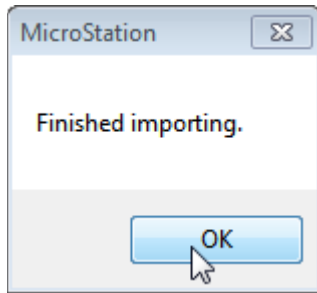
Click on the worksheet that has your coordinate control points.

Fill in the plan sheet information.



Then click the import button.

When the program finishes you will get a message box.



To save a text file of the points for use with a data collector, click the "Save .asc File" button. If using ProjectWise the text file will be saved in the same folder that the design file is located. If your not using ProjectWise the you will be prompted on where to save the file. The default file name will be <item no>.asc

Here are some images of the results.

A screenshot of a table titled 'COORDINATE CONTROL POINTS' displayed in a software window. The table has the following columns: POINT, DESCRIPTION, State Plane Coordinates (subdivided into NORTH (Y), EAST (X), and ELEV. (Z)), STATION, and OFFSET. The data rows are as follows:

POINT	DESCRIPTION	State Plane Coordinates			STATION	OFFSET
		NORTH (Y)	EAST (X)	ELEV. (Z)		
POB	KY 168	344556.765	2105120.980		100 + 00.00	
PC	KY 168	344647.419	2105149.156		100 + 95.38	
PI	KY 168	344731.191	2105175.089		101 + 83.07	
PT	KY 168	344818.077	2105174.815		102 + 69.41	
PC	KY 168	344825.667	2105174.796		102 + 76.20	
PI	KY 168	345124.034	2105173.966		105 + 74.57	
PT	KY 168	345231.410	2104093.808		108 + 03.14	
PC	KY 168	345741.317	2104094.259		108 + 01.07	
PI	KY 168	345253.588	2104853.069		108 + 52.74	
PT	KY 168	345264.108	2104808.746		108 + 96.85	
PC	KY 168	345271.813	2104730.811		109 + 73.38	
PI	KY 168	345288.065	2104689.604		110 + 25.98	
PT	KY 168	345293.372	2104632.301		110 + 76.29	

A vertical text label on a black background that reads 'E-SHEET NAME: R02200CC' in blue font.

COUNTY OF	ITEM NO.	SHEET NO.
Henry	05-1234.56	R22

Two text elements on a black background. On the left, the text 'SCALE: 1"= 50'' is displayed. On the right, the text 'Coordinate Control Sheet' is displayed in a larger blue font.

1,344556.295,2105120.980,0.000,POB  
2,344647.418,2105149.156,0.000,PC  
3,344731.191,2105175.059,0.000,PI  
4,344818.877,2105174.815,0.000,PT  
5,344825.667,2105174.796,0.000,PC  
6,345124.034,2105173.966,0.000,PI  
7,345239.410,2104898.808,0.000,PT  
8,345241.317,2104894.259,0.000,PC  
9,345258.588,2104853.069,0.000,PI  
10,345264.108,2104808.746,0.000,PT  
11,345273.813,2104730.811,0.000,PC  
12,345280.065,2104680.604,0.000,PI  
13,345295.372,2104632.381,0.000,PT  
14,345295.844,2104630.895,0.000,POE

If you need support or to report a bug contact [henry.wells@ky.gov](mailto:henry.wells@ky.gov)