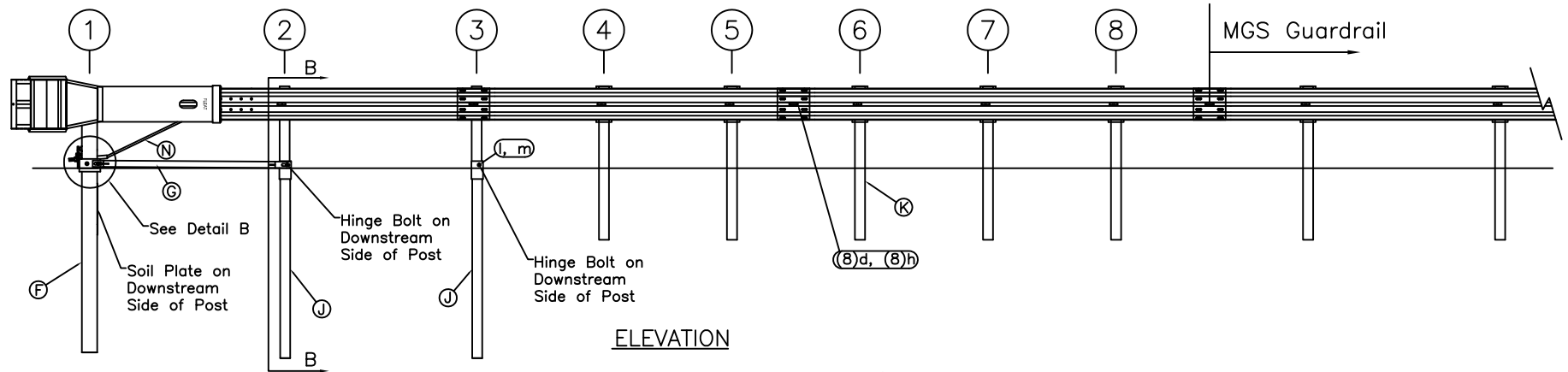


TRAFFIC →

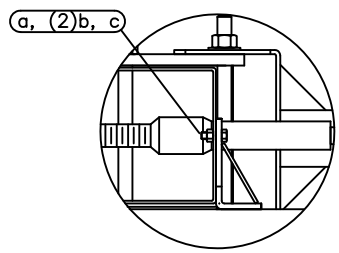
PLAN



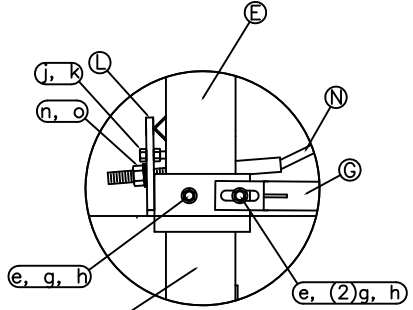
ELEVATION

ITEM	QTY	BILL OF MATERIALS	ITEM NO.
A	1	FLEAT IMPACT HEAD	MF3000
B	1	FLEAT ANCHOR RAIL 12'-6"	SF1303
C	1	FLEAT SECOND RAIL 10'-5"	F1324
D	1	FLEAT THIRD RAIL 13'-6 1/2"	F1334
E	1	FIRST POST TOP (6X6 3/4" Tube)	MP1A
F	1	FIRST POST BOTTOM (6" W6X15)	MP1B
G	1	GROUND STRUT	MS785
H	2	HINGE POST UPPER	MHP2A
J	2	HINGED POST LOWER	HP2B
K	5	STEEL LINE POST 6'	P621
L	1	MASH BEARING PLATE	ME750
M	1	CABLE ANCHOR BOX	S760
N	1	BCT CABLE ANCHOR ASSEMBLY	E770
O	5	RECYCLED PLASTIC BLOCK OR EQUIV.	CBSP-14
HARDWARE (ALL DIMENSIONS IN INCHES)			

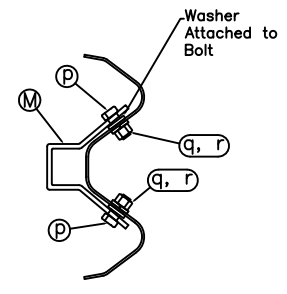
a	2	5/16 x 1 HEX BOLT GRD 5	B5160104A
b	4	5/16 WASHER	W0516
c	2	5/16 HEX NUT	N0516
d	18	5/8 x 1 1/4 SPLICE BOLT	B580122
e	2	5/8 x 9 HEX BOLT GRD 5	B580904A
f	5	5/8 x 10 H.G.R. BOLT	B581002
g	3	5/8 WASHER	W050
h	25	5/8 H.G.R. NUT	N050
j	1	5/8 x 5" BOLT FULL THREAD GRD A449	B580504A
k	1	5/8 HEX NUT	N055
l	2	3/4 x 8 1/2 HEX BOLT GRD A449	B340854A
m	2	3/4 HEX NUT	N030
n	2	1 ANCHOR CABLE HEX NUT	N100
o	2	1 ANCHOR CABLE WASHER	W100
p	8	1/2 RSI SHOULDER BOLT W/WASHER	SB12A
q	8	1/2 STRUCTURAL NUT	N012A
r	8	1/2 STRUCTURAL WASHER	W012A



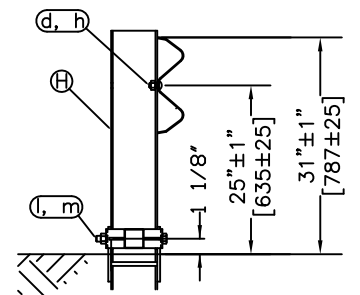
Detail A
Impact Head Connection



Detail B
Post #1 Connection



SECTION A-A
Anchor Bracket



SECTION B-B
Post #2

GENERAL NOTES:

- All bolts, nuts, cable assemblies, cable anchors and bearing plates shall be galvanized.
- The lower sections of the Posts 1, 2 & 3 shall not protrude more than 4 in above the ground (measured along a 5' cord). Site grading may be necessary to meet this requirement.
- The lower sections of the hinged posts should not be driven with the upper post attached. If the post is placed in a drilled hole, the backfill material must be satisfactorily compacted to prevent settlement.
- When competent rock is encountered, a 12" Ø post hole, 20 in. deep cored into the rock surface may be used if approved by the engineer for Posts 1 and/or 2. Granular material will be placed in the bottom of the hole, approximately 2.5" deep to provide drainage. The first and/or second post can be field cut to length, placed in the hole and backfilled with suitable backfill. The soil plate may be trimmed if required.
- The breakaway cable assembly must be taut. A locking device (vice grips or channel lock pliers) should be used to prevent the cable from twisting when tightening nuts.

RSI
Road Systems, Inc.
Big Spring, TX
Phone: 432-263-2435
or Phone: 330-346-0721

MASH FLEAT Terminal TL-3 Standard Post System		Sheet:	1
		Date:	04/10/19
Drawing Name: MFLT		By:	JRR
		Scale: None	Rev: 0