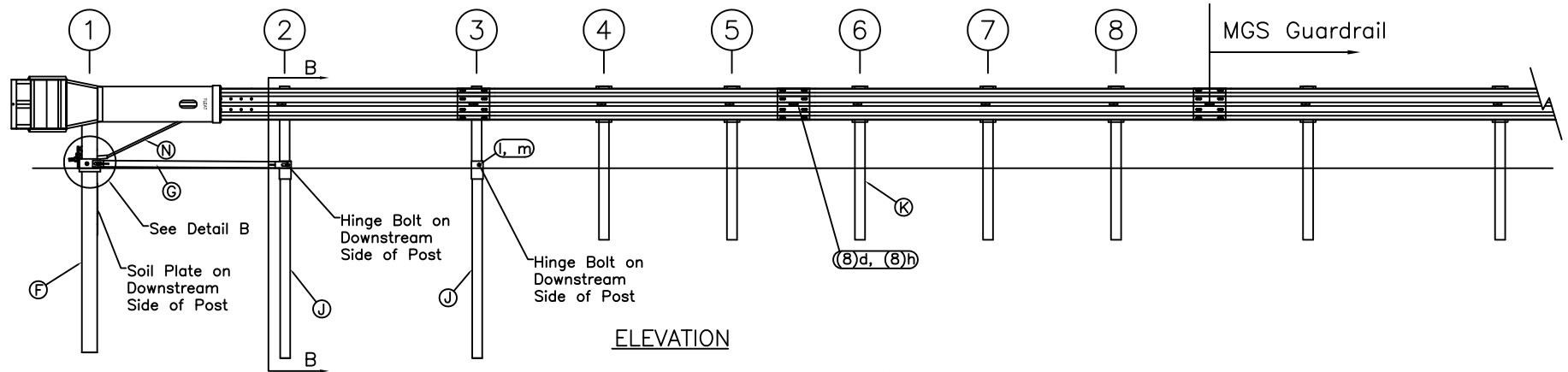


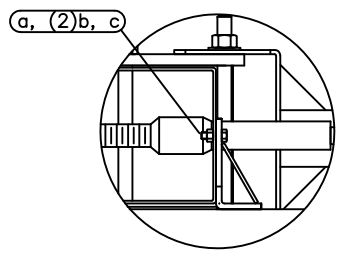
TRAFFIC →

PLAN

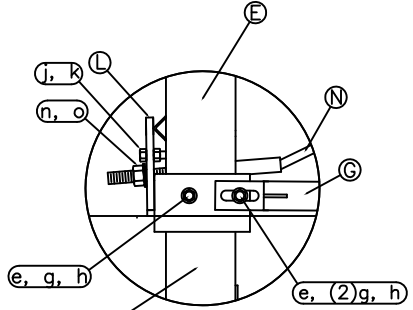


ELEVATION

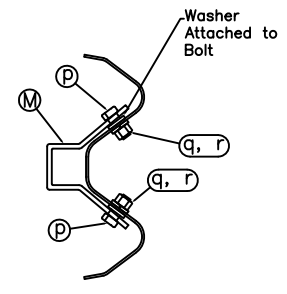
| ITEM                                | QTY | BILL OF MATERIALS                | ITEM NO. |
|-------------------------------------|-----|----------------------------------|----------|
| A                                   | 1   | FLEAT IMPACT HEAD                | MF3000   |
| B                                   | 1   | FLEAT ANCHOR RAIL 12'-6"         | SF1303   |
| C                                   | 1   | FLEAT SECOND RAIL 10'-5"         | F1324    |
| D                                   | 1   | FLEAT THIRD RAIL 13'-6 1/2"      | F1334    |
| E                                   | 1   | FIRST POST TOP (6X6 3/4" Tube)   | MP1A     |
| F                                   | 1   | FIRST POST BOTTOM (6' W6X15)     | MP1B     |
| G                                   | 1   | GROUND STRUT                     | MS785    |
| H                                   | 2   | HINGE POST UPPER                 | MHP2A    |
| J                                   | 2   | HINGED POST LOWER                | HP2B     |
| K                                   | 5   | STEEL LINE POST 6'               | P621     |
| L                                   | 1   | MASH BEARING PLATE               | ME750    |
| M                                   | 1   | CABLE ANCHOR BOX                 | S760     |
| N                                   | 1   | BCT CABLE ANCHOR ASSEMBLY        | E770     |
| O                                   | 5   | RECYCLED PLASTIC BLOCK OR EQUIV. | P618     |
| HARDWARE (ALL DIMENSIONS IN INCHES) |     |                                  |          |



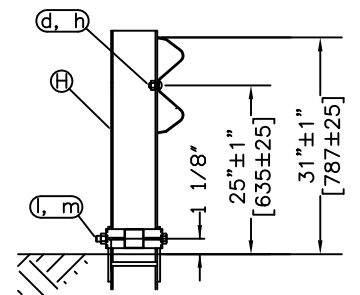
Detail A  
Impact Head Connection



Detail B  
Post #1 Connection



SECTION A-A  
Anchor Bracket



SECTION B-B  
Post #2

GENERAL NOTES:

- All bolts, nuts, cable assemblies, cable anchors and bearing plates shall be galvanized.
- The lower sections of the Posts 1, 2 & 3 shall not protrude more than 4 in above the ground (measured along a 5' cord). Site grading may be necessary to meet this requirement.
- The lower sections of the hinged posts should not be driven with the upper post attached. If the post is placed in a drilled hole, the backfill material must be satisfactorily compacted to prevent settlement.
- When competent rock is encountered, a 12" Ø post hole, 20 in. deep cored into the rock surface may be used if approved by the engineer for Posts 1 and/or 2. Granular material will be placed in the bottom of the hole, approximately 2.5" deep to provide drainage. The first and/or second post can be field cut to length, placed in the hole and backfilled with suitable backfill. The soil plate may be trimmed if required.
- The breakaway cable assembly must be taut. A locking device (vice grips or channel lock pliers) should be used to prevent the cable from twisting when tightening nuts.

**RSI**  
Road Systems, Inc.  
Big Spring, TX  
Phone: 432-263-2435  
or Phone: 330-346-0721

MASH FLEAT Terminal  
12" Blocks  
TL-3 Standard Post System

Drawing Name: MFLT-12  
Scale: None

Sheet: 1  
Date: 04/10/19  
By: JRR  
Rev: 0