

FOR IMMEDIATE RELEASE

Contact: Natasha Lacy (NatashaF.Lacy@ky.gov or 859-246-2355)

**KENTUCKY TRANSPORTATION CABINET ANNOUNCES PUBLIC MEETING FOR
JESSAMINE-FAYETTE CONNECTIVITY STUDY**

Public feedback will guide safety and connectivity improvements

LEXINGTON, Ky. (July 15, 2021) – The Kentucky Transportation Cabinet (KYTC) today announced a public meeting will be held on Thursday, July 22, 2021, to provide an update on the Jessamine-Fayette Connectivity Study and to solicit public feedback regarding potential improvement concepts.

Jessamine-Fayette Connectivity Study Public Meeting

Thursday, July 22, 2021

5 p.m. to 7 p.m.

East Jessamine Middle School

901 Union Mill Road

Nicholasville, KY 40356

A live presentation will take place at 5:30 p.m. to provide an overview of the study, and the study team will be available throughout the evening to answer questions. The meeting will be held in person, but all meeting materials and a link to the presentation will be posted on the project website (JessFayStudy.com).

The Jessamine-Fayette Connectivity Study is examining current conditions related to safety and mobility within the study area and evaluating how to improve east-west connectivity. Demographic trends show that the population of Jessamine County is expected to increase by more than 40 percent by the year 2040, and Fayette County is expected to grow by more than 33 percent. The current roadway network will not support this level of growth.

The current study will not consider any connections or roadway improvements that would cross or impact the Kentucky River. No decisions regarding specific roadway alignments have been made and local input is helping to shape next steps.

“Since our previous dialogue with the public last year, our team has conducted a thorough review of the input we received and used that feedback to inform the technical analysis that also has been conducted,” said Casey Smith, Planning Supervisor for KYTC and Project Manager for the Jessamine-Fayette Connectivity Study. “The project team has developed conceptual improvements that promote safety and increase connectivity, and we are ready to show those to the public and receive their feedback.”

Smith continued, reiterating that public input is a critical component of the study process and encouraged the public to visit JessFayStudy.com to review the initial improvement concepts and provide their comments.

-more-

“In our last round of public outreach, we heard from several hundred local residents who weighed in on their travel experiences within our study area,” said Smith.

“More than 75 percent of those who responded to our first survey indicated that they think improvements are needed now. In addition, they said that increasing congestion, narrow travel lanes and shoulders, and too much truck traffic using local roads are issues that should be addressed,” he said.

Updated study information and meeting exhibits will be available at JessFayStudy.com following the July 22 public meeting. Comments provided within 30 days will be recorded as part of the formal study documentation, but input can be provided at anytime throughout the study process.

The Lexington Area Metropolitan Planning Organization (LAMPO) is partnering with KYTC on the study.

About the Kentucky Transportation Cabinet

At the Kentucky Transportation Cabinet, our job is to ensure our infrastructure meets the needs of our growing population and businesses. Find us online at Transportation.Ky.gov and visit us on [Facebook](#) and [Twitter](#).

###

JESSAMINE/FAYETTE CONNECTIVITY STUDY

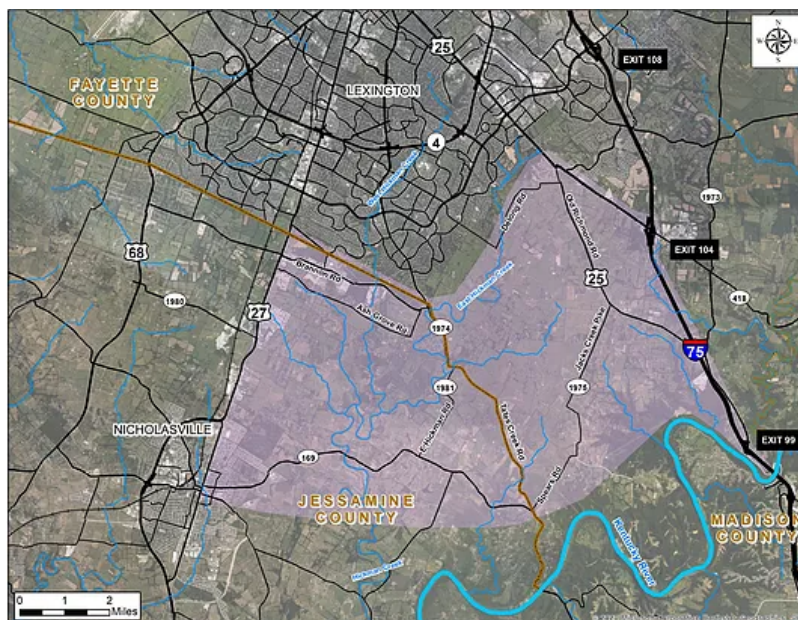


At the Kentucky Transportation Cabinet (KYTC), our job is to ensure our infrastructure meets the needs of our growing population and businesses.

From planning to construction, every project is about improving safety, supporting jobs and economic growth, and providing better access for all who travel through our area. We know that providing safe and efficient connections supports our regional economy and keeps our communities strong.

KYTC is studying various options for improving safety and connectivity between Jessamine and Fayette counties, but will not consider any improvement options that cross or impact the Kentucky River.

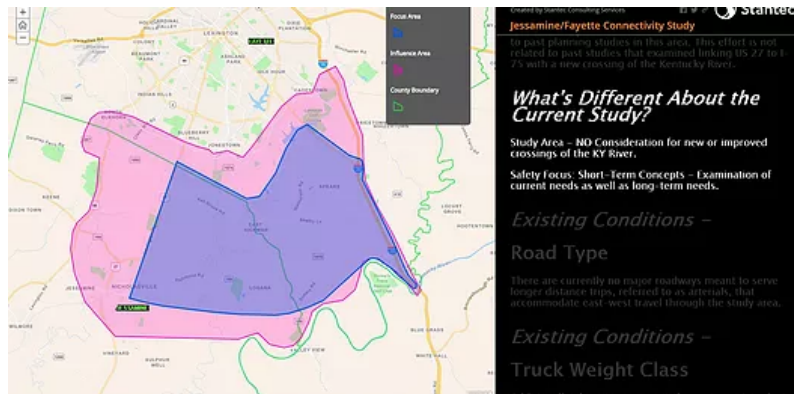
Specifically, the Jessamine-Fayette Connectivity Study will consider how to improve east-west connectivity in the study area and will examine current conditions related to safety and mobility in and between northeast Jessamine and southeast Fayette counties. The current study will not consider any connections or roadway improvements that would cross or impact the Kentucky River.



Click the map to view a larger image of the study area, highlighted above in the purple shaded section. It consists of the area from

Nicholasville Road to the west to I-75 to the east and stops north of the Kentucky River to the south.

ABOUT THE STUDY



[Click here to learn more about this study and why it's important.](#)

Public involvement plays a critical role in the planning process, and your feedback will help to shape next steps.

The public will play a critical role throughout the planning and project development process, specifically by providing local knowledge and feedback that helps inform decision making.

Comments and questions about the study can be shared with us at info@JessFayStudy.com.

**Your feedback is important
to us and will guide our work.**

**Please take a few minutes
to complete our
SURVEY.**

KYTC Project Development Process highlights the five phases that our project will include.
We are currently in the Planning phase.



KYTC PROJECT DEVELOPMENT PROCESS



PLANNING

The scope of the potential project is defined.



PRELIMINARY ENGINEERING (PE) & ENVIRONMENTAL EVALUATION

All environmental studies are performed and a minimal amount of engineering is completed. The end result is an environmental document and preferred roadway alternative.



DESIGN

Once an environmental document is approved, the project moves into final design, which takes the final approved alternative from the previous phase and designs the project. The end result is a set of construction plans and cost estimates. Right of way needs are authorized during the design phase and utility relocation impacts also are addressed.



RIGHT OF WAY & UTILITY COORDINATION

During this phase, right of way needs are negotiated and utility relocation impacts also are addressed.



CONSTRUCTION

The project is put out for bid, a contractor is selected and the project is built.



THE PUBLIC PLAYS A CRITICAL ROLE THROUGHOUT THE PROJECT DEVELOPMENT PROCESS, SPECIFICALLY PROVIDING FEEDBACK THAT HELPS INFORM DECISION MAKING THROUGHOUT THE ENTIRE PROCESS.

CONTACT US

Kentucky Transportation Cabinet
District 7
800 Newtown Court
Lexington, KY 40511
Phone: (859) 246-2355
Fax: (859) 246-2354
Email: info@jessfaystudy.com

Please enter your question or comment here.

☒ Sign me up for project updates!

Submit