

**FARMLAND CONVERSION IMPACT RATING
FOR CORRIDOR TYPE PROJECTS**

PART I (To be completed by Federal Agency)		3. Date of Land Evaluation Request 6/27/12	4. Sheet 1 of 1
1. Name of Project KY 32 Improvement Project		5. Federal Agency Involved FHWA	
2. Type of Project Right-of-Way Corridor Project		6. County and State Elliott, KY	
PART II (To be completed by NRCS)		1. Date Request Received by NRCS 6-27-12	2. Person Completing Form Steve Jacobs, RSS
3. Does the corridor contain prime, unique statewide or local important farmland? (If no, the FPPA does not apply - Do not complete additional parts of this form.) YES <input checked="" type="checkbox"/> NO <input type="checkbox"/>		4. Acres Irrigated Average Farm Size - 131ac.	
5. Major Crop(s) Corn, Tobacco, Hay	6. Farmable Land in Government Jurisdiction Acres: 46,638 % 31.09		7. Amount of Farmland As Defined in FPPA Acres: 13,120 % 9.75
8. Name Of Land Evaluation System Used NRCS- Elliott Co.	9. Name of Local Site Assessment System NONE		10. Date Land Evaluation Returned by NRCS 7-9-12

PART III (To be completed by Federal Agency)	Alternative Corridor For Segment			
	Corridor A 1A	Corridor B 1B	Corridor C 2A	Corridor D 3
A. Total Acres To Be Converted Directly	85	274	231	337
B. Total Acres To Be Converted Indirectly, Or To Receive Services	85	274	231	337
C. Total Acres In Corridor	85	274	231	337

PART IV (To be completed by NRCS) Land Evaluation Information				
A. Total Acres Prime And Unique Farmland	0.0	0.4	0.2	0.0
B. Total Acres Statewide And Local Important Farmland	3.2	9.5	7.6	20.1
C. Percentage Of Farmland in County Or Local Govt. Unit To Be Converted	0.01	0.02	0.02	0.04
D. Percentage Of Farmland in Govt. Jurisdiction With Same Or Higher Relative Value	100	100	100	100

PART V (To be completed by NRCS) Land Evaluation Information Criterion Relative value of Farmland to Be Serviced or Converted (Scale of 0 - 100 Points)				
	19	14	16	15

PART VI (To be completed by Federal Agency) Corridor Assessment Criteria (These criteria are explained in 7 CFR 658.5(c))		Maximum Points			
1. Area in Nonurban Use		15			
2. Perimeter in Nonurban Use		10			
3. Percent Of Corridor Being Farmed		20			
4. Protection Provided By State And Local Government		20			
5. Size of Present Farm Unit Compared To Average		10			
6. Creation Of Nonfarmable Farmland		25			
7. Availability Of Farm Support Services		5			
8. On-Farm Investments		20			
9. Effects Of Conversion On Farm Support Services		25			
10. Compatibility With Existing Agricultural Use		10			
TOTAL CORRIDOR ASSESSMENT POINTS		160	0	0	0

PART VII (To be completed by Federal Agency)					
Relative Value Of Farmland (From Part V)	100	0	0	0	0
Total Corridor Assessment (From Part VI above or a local site assessment)	160	0	0	0	0
TOTAL POINTS (Total of above 2 lines)	260	0	0	0	0

1. Corridor Selected:	2. Total Acres of Farmlands to be Converted by Project:	3. Date Of Selection:	4. Was A Local Site Assessment Used? YES <input type="checkbox"/> NO <input type="checkbox"/>
5. Reason For Selection:			

Part III: For the purposes of this form, the four build alternatives for KY 32 are as follows: Corridor A = Alternative 1A, Corridor B = Alternative 1B, Corridor C = Alternative 2A, and Corridor D= Alternative 3.

Acreege figures represent total ROW (existing + required).

Signature of Person Completing this Part:	DATE
---	------

NOTE: Complete a form for each segment with more than one Alternate Corridor

CORRIDOR - TYPE SITE ASSESSMENT CRITERIA

The following criteria are to be used for projects that have a linear or corridor - type site configuration connecting two distant points, and crossing several different tracts of land. These include utility lines, highways, railroads, stream improvements, and flood control systems. Federal agencies are to assess the suitability of each corridor - type site or design alternative for protection as farmland along with the land evaluation information.

(1) How much land is in nonurban use within a radius of 1.0 mile from where the project is intended?

More than 90 percent - 15 points
90 to 20 percent - 14 to 1 point(s)
Less than 20 percent - 0 points

(2) How much of the perimeter of the site borders on land in nonurban use?

More than 90 percent - 10 points
90 to 20 percent - 9 to 1 point(s)
Less than 20 percent - 0 points

(3) How much of the site has been farmed (managed for a scheduled harvest or timber activity) more than five of the last 10 years?

More than 90 percent - 20 points
90 to 20 percent - 19 to 1 point(s)
Less than 20 percent - 0 points

(4) Is the site subject to state or unit of local government policies or programs to protect farmland or covered by private programs to protect farmland?

Site is protected - 20 points
Site is not protected - 0 points

(5) Is the farm unit(s) containing the site (before the project) as large as the average - size farming unit in the County?

(Average farm sizes in each county are available from the NRCS field offices in each state. Data are from the latest available Census of Agriculture, Acreage or Farm Units in Operation with \$1,000 or more in sales.)
As large or larger - 10 points
Below average - deduct 1 point for each 5 percent below the average, down to 0 points if 50 percent or more below average - 9 to 0 points

(6) If the site is chosen for the project, how much of the remaining land on the farm will become non-farmable because of interference with land patterns?

Acreage equal to more than 25 percent of acres directly converted by the project - 25 points
Acreage equal to between 25 and 5 percent of the acres directly converted by the project - 1 to 24 point(s)
Acreage equal to less than 5 percent of the acres directly converted by the project - 0 points

(7) Does the site have available adequate supply of farm support services and markets, i.e., farm suppliers, equipment dealers, processing and storage facilities and farmer's markets?

All required services are available - 5 points
Some required services are available - 4 to 1 point(s)
No required services are available - 0 points

(8) Does the site have substantial and well-maintained on-farm investments such as barns, other storage building, fruit trees and vines, field terraces, drainage, irrigation, waterways, or other soil and water conservation measures?

High amount of on-farm investment - 20 points
Moderate amount of on-farm investment - 19 to 1 point(s)
No on-farm investment - 0 points

(9) Would the project at this site, by converting farmland to nonagricultural use, reduce the demand for farm support services so as to jeopardize the continued existence of these support services and thus, the viability of the farms remaining in the area?

Substantial reduction in demand for support services if the site is converted - 25 points
Some reduction in demand for support services if the site is converted - 1 to 24 point(s)
No significant reduction in demand for support services if the site is converted - 0 points

(10) Is the kind and intensity of the proposed use of the site sufficiently incompatible with agriculture that it is likely to contribute to the eventual conversion of surrounding farmland to nonagricultural use?

Proposed project is incompatible to existing agricultural use of surrounding farmland - 10 points
Proposed project is tolerable to existing agricultural use of surrounding farmland - 9 to 1 point(s)
Proposed project is fully compatible with existing agricultural use of surrounding farmland - 0 points

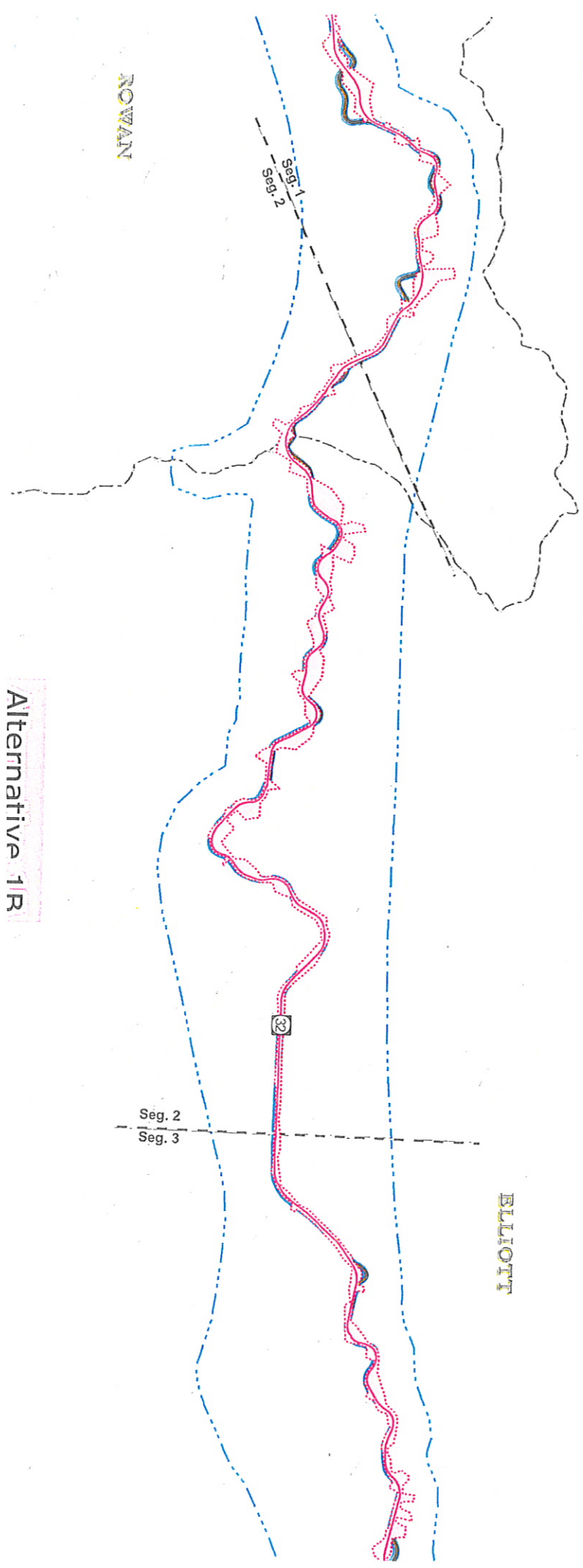
ROWAN

Seg. 1
Seg. 2

Seg. 2
Seg. 3

BELLIOTT

Alternative 1R

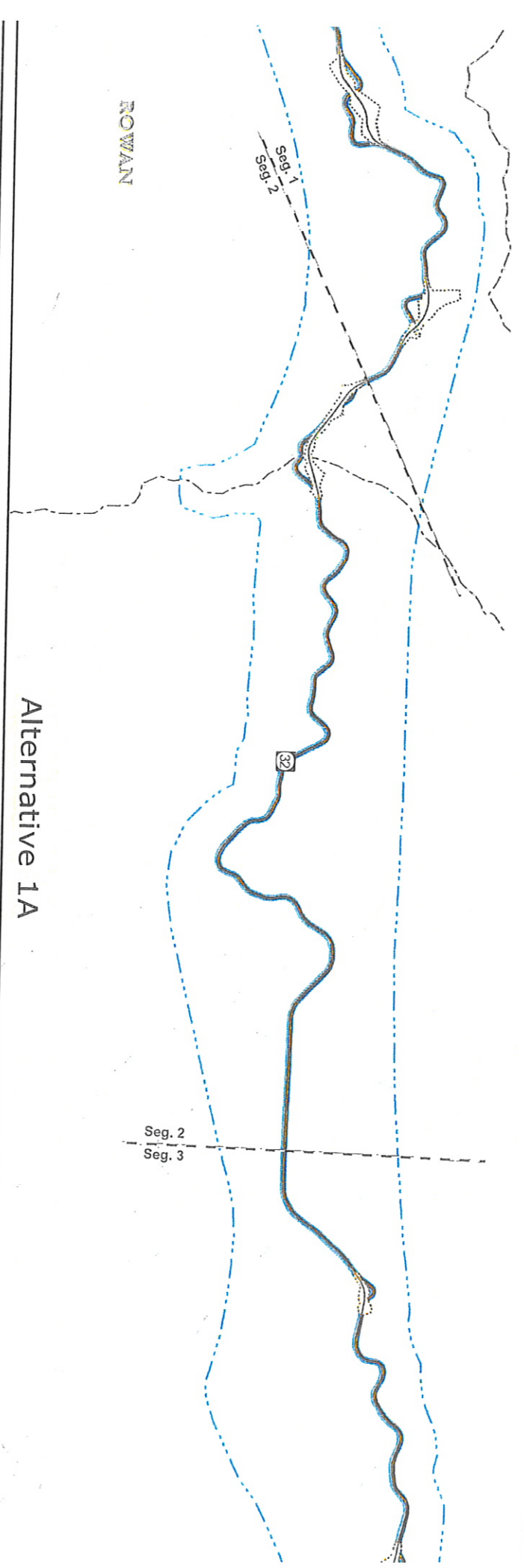


ROWAN

Seg. 1
Seg. 2

Seg. 2
Seg. 3

Alternative 1A



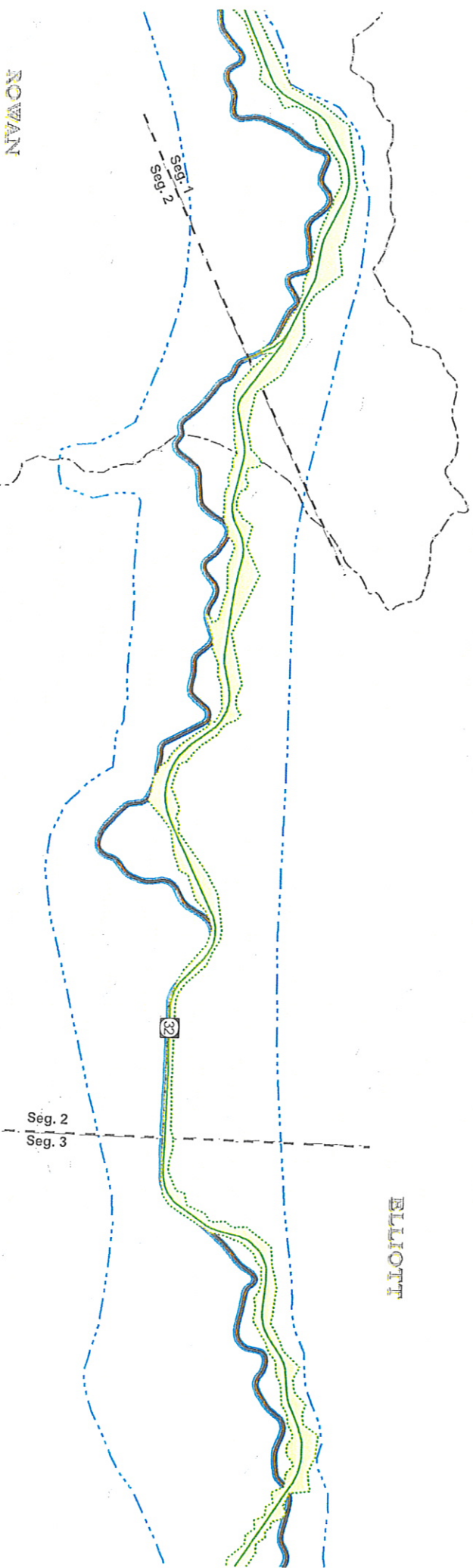
ROWAN

Seg. 1
Seg. 2

Seg. 2
Seg. 3

ELLIOTT

Alternative 3

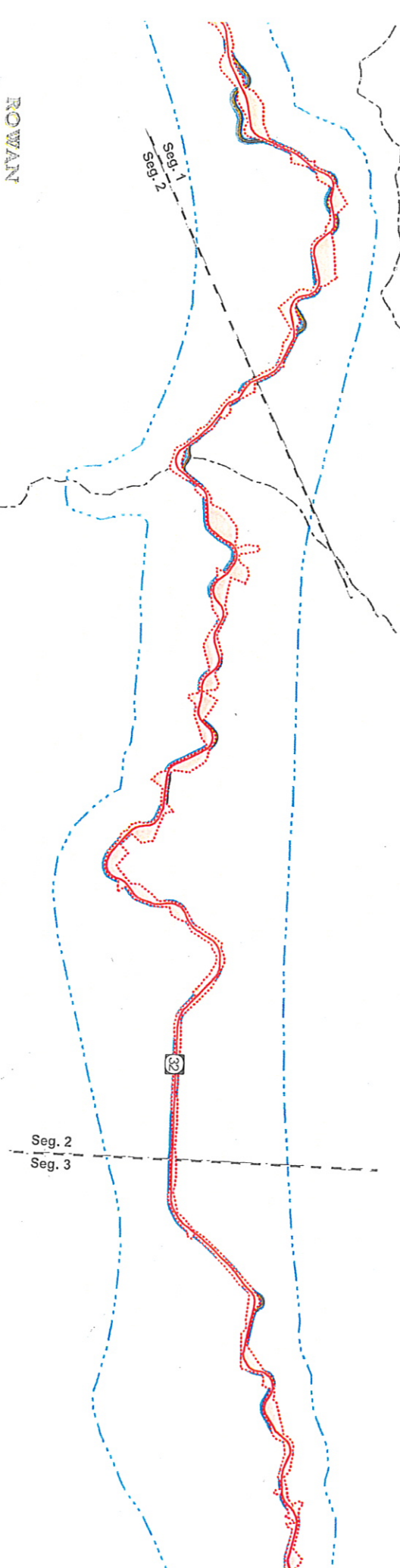


ROWAN

Seg. 1
Seg. 2

Seg. 2
Seg. 3

Alternative 2A



Prime and other Important Farmlands

Elliott County, Kentucky

Map symbol	Map unit name	Farmland classification
GeB	Gilpin-Ezel-Cotaco complex, 0 to 6 percent slopes	All areas are prime farmland
GbC	Gilpin-Blairton-Ramsey complex, 2 to 12 percent slopes	Farmland of statewide importance
SoC	Shelocta-Grigsby-Orrville complex, 2 to 15 percent slopes	Farmland of statewide importance

Map Unit Description (Brief, Generated)

Elliott County, Kentucky

[Minor map unit components are excluded from this report]

Map unit: GbC - Gilpin-Blairton-Ramsey complex, 2 to 12 percent slopes

Component: Gilpin (45%)

The Gilpin component makes up 45 percent of the map unit. Slopes are 2 to 12 percent. This component is on ridges on hills. The parent material consists of fine-loamy residuum weathered from interbedded sedimentary rock. Depth to a root restrictive layer, bedrock, lithic, is 20 to 40 inches. The natural drainage class is well drained. Water movement in the most restrictive layer is moderately high. Available water to a depth of 60 inches is low. Shrink-swell potential is low. This soil is not flooded. It is not ponded. There is no zone of water saturation within a depth of 72 inches. Organic matter content in the surface horizon is about 3 percent. Nonirrigated land capability classification is 3e. This soil does not meet hydric criteria.

Component: Blairton (26%)

The Blairton component makes up 26 percent of the map unit. Slopes are 2 to 12 percent. This component is on ridges on hills. The parent material consists of fine-loamy residuum weathered from shale and siltstone. Depth to a root restrictive layer, bedrock, paralithic, is 20 to 40 inches. The natural drainage class is moderately well drained. Water movement in the most restrictive layer is moderately high. Available water to a depth of 60 inches is low. Shrink-swell potential is low. This soil is not flooded. It is not ponded. A seasonal zone of water saturation is at 22 inches during January, February, March, April, May, December. Organic matter content in the surface horizon is about 2 percent. Nonirrigated land capability classification is 3e. This soil does not meet hydric criteria.

Component: Ramsey (16%)

The Ramsey component makes up 16 percent of the map unit. Slopes are 2 to 12 percent. This component is on ridges on hills. The parent material consists of loamy residuum weathered from sandstone. Depth to a root restrictive layer, bedrock, lithic, is 10 to 20 inches. The natural drainage class is somewhat excessively drained. Water movement in the most restrictive layer is high. Available water to a depth of 60 inches is very low. Shrink-swell potential is low. This soil is not flooded. It is not ponded. There is no zone of water saturation within a depth of 72 inches. Organic matter content in the surface horizon is about 2 percent. Nonirrigated land capability classification is 7s. This soil does not meet hydric criteria.

Map unit: GeB - Gilpin-Ezel-Cotaco complex, 0 to 6 percent slopes

Component: Gilpin (45%)

The Gilpin component makes up 45 percent of the map unit. Slopes are 0 to 6 percent. This component is on stream terraces on valleys. The parent material consists of fine-loamy alluvium derived from sedimentary rock and/or fine-loamy residuum weathered from sandstone and siltstone. Depth to a root restrictive layer, bedrock, paralithic, is 20 to 40 inches. The natural drainage class is well drained. Water movement in the most restrictive layer is moderately high. Available water to a depth of 60 inches is low. Shrink-swell potential is low. This soil is not flooded. It is not ponded. There is no zone of water saturation within a depth of 72 inches. Organic matter content in the surface horizon is about 3 percent. Nonirrigated land capability classification is 2e. This soil does not meet hydric criteria.

Component: Ezel (25%)

The Ezel component makes up 25 percent of the map unit. Slopes are 0 to 6 percent. This component is on stream terraces on valleys. The parent material consists of fine-loamy alluvium derived from sedimentary rock. Depth to a root restrictive layer, bedrock, lithic, is 40 to 60 inches. The natural drainage class is well drained. Water movement in the most restrictive layer is moderately high. Available water to a depth of 60 inches is moderate. Shrink-swell potential is low. This soil is not flooded. It is not ponded. There is no zone of water saturation within a depth of 72 inches. Organic matter content in the surface horizon is about 3 percent. Nonirrigated land capability classification is 2e. This soil does not meet hydric criteria.

Component: Cotaco (20%)

The Cotaco component makes up 20 percent of the map unit. Slopes are 0 to 6 percent. This component is on stream terraces on valleys. The parent material consists of fine-loamy alluvium derived from sedimentary rock. Depth to a root restrictive layer, bedrock, lithic, is 45 to 80 inches. The natural drainage class is moderately well drained. Water movement in the most restrictive layer is very low. Available water to a depth of 60 inches is moderate. Shrink-swell potential is low. This soil is not flooded. It is not ponded. A seasonal zone of water saturation is at 32 inches during January, February, March, April, May, December. Organic matter content in the surface horizon is about 3 percent. Nonirrigated land capability classification is 2w. This soil does not meet hydric criteria.

Map Unit Description (Brief, Generated)

Elliott County, Kentucky

Map unit: GrD - Gilpin-Ramsey complex, 6 to 25 percent slopes

Component: Gilpin (58%)

The Gilpin component makes up 58 percent of the map unit. Slopes are 6 to 25 percent. This component is on stream terraces on valleys. The parent material consists of fine-loamy alluvium derived from sedimentary rock and/or fine-loamy colluvium derived from sandstone and siltstone. Depth to a root restrictive layer, bedrock, paralithic, is 20 to 40 inches. The natural drainage class is well drained. Water movement in the most restrictive layer is moderately high. Available water to a depth of 60 inches is low. Shrink-swell potential is low. This soil is not flooded. It is not ponded. There is no zone of water saturation within a depth of 72 inches. Organic matter content in the surface horizon is about 3 percent. Nonirrigated land capability classification is 4e. This soil does not meet hydric criteria.

Component: Ramsey (18%)

The Ramsey component makes up 18 percent of the map unit. Slopes are 6 to 25 percent. This component is on hillslopes on hills. The parent material consists of loamy colluvium derived from sandstone. Depth to a root restrictive layer, bedrock, lithic, is 10 to 20 inches. The natural drainage class is somewhat excessively drained. Water movement in the most restrictive layer is high. Available water to a depth of 60 inches is very low. Shrink-swell potential is low. This soil is not flooded. It is not ponded. There is no zone of water saturation within a depth of 72 inches. Organic matter content in the surface horizon is about 2 percent. Nonirrigated land capability classification is 4s. This soil does not meet hydric criteria.

Map unit: GsE - Gilpin-Shelocta complex, 25 to 45 percent slopes

Component: Gilpin (46%)

The Gilpin component makes up 46 percent of the map unit. Slopes are 25 to 45 percent. This component is on hillslopes on hills. The parent material consists of fine-loamy colluvium derived from interbedded sedimentary rock and/or fine-loamy residuum weathered from interbedded sedimentary rock. Depth to a root restrictive layer, bedrock, lithic, is 20 to 40 inches. The natural drainage class is well drained. Water movement in the most restrictive layer is moderately high. Available water to a depth of 60 inches is low. Shrink-swell potential is low. This soil is not flooded. It is not ponded. There is no zone of water saturation within a depth of 72 inches. Organic matter content in the surface horizon is about 3 percent. Nonirrigated land capability classification is 6e. This soil does not meet hydric criteria.

Component: Shelocta (35%)

The Shelocta component makes up 35 percent of the map unit. Slopes are 25 to 45 percent. This component is on hillslopes on hills. The parent material consists of fine-loamy colluvium derived from shale and siltstone. Depth to a root restrictive layer, bedrock, paralithic, is 40 to 60 inches. The natural drainage class is well drained. Water movement in the most restrictive layer is moderately high. Available water to a depth of 60 inches is moderate. Shrink-swell potential is low. This soil is not flooded. It is not ponded. There is no zone of water saturation within a depth of 72 inches. Organic matter content in the surface horizon is about 3 percent. Nonirrigated land capability classification is 6e. This soil does not meet hydric criteria.

Map unit: GtD - Gilpin-Steinsburg-Blairton complex, 12 to 25 percent slopes

Component: Gilpin (40%)

The Gilpin component makes up 40 percent of the map unit. Slopes are 12 to 25 percent. This component is on ridges on hills. The parent material consists of fine-loamy residuum weathered from interbedded sedimentary rock. Depth to a root restrictive layer, bedrock, paralithic, is 20 to 40 inches. The natural drainage class is well drained. Water movement in the most restrictive layer is moderately high. Available water to a depth of 60 inches is low. Shrink-swell potential is low. This soil is not flooded. It is not ponded. There is no zone of water saturation within a depth of 72 inches. Organic matter content in the surface horizon is about 3 percent. Nonirrigated land capability classification is 4e. This soil does not meet hydric criteria.

Component: Steinsburg (25%)

The Steinsburg component makes up 25 percent of the map unit. Slopes are 12 to 25 percent. This component is on ridges on hills. The parent material consists of coarse-loamy residuum weathered from sandstone. Depth to a root restrictive layer, bedrock, lithic, is 20 to 40 inches. The natural drainage class is well drained. Water movement in the most restrictive layer is high. Available water to a depth of 60 inches is very low. Shrink-swell potential is low. This soil is not flooded. It is not ponded. There is no zone of water saturation within a depth of 72 inches. Organic matter content in the surface horizon is about 60 percent. Nonirrigated land capability classification is 4e. This soil does not meet hydric criteria.

Map Unit Description (Brief, Generated)

Elliott County, Kentucky

Map unit: GtD - Gilpin-Steinsburg-Blairton complex, 12 to 25 percent slopes

Component: Blairton (15%)

The Blairton component makes up 15 percent of the map unit. Slopes are 12 to 25 percent. This component is on ridges on hills. The parent material consists of fine-loamy residuum weathered from shale and siltstone. Depth to a root restrictive layer, bedrock, paralithic, is 20 to 40 inches. The natural drainage class is moderately well drained. Water movement in the most restrictive layer is moderately high. Available water to a depth of 60 inches is low. Shrink-swell potential is low. This soil is not flooded. It is not ponded. A seasonal zone of water saturation is at 22 inches during January, February, March, April, May, December. Organic matter content in the surface horizon is about 2 percent. Nonirrigated land capability classification is 4e. This soil does not meet hydric criteria.

Map unit: RgF - Rigley-Rock outcrop complex, 30 to 70 percent slopes

Component: Rigley (65%)

The Rigley component makes up 65 percent of the map unit. Slopes are 30 to 70 percent. This component is on hillslopes, hills. The parent material consists of coarse-loamy colluvium derived from sandstone. Depth to a root restrictive layer, bedrock, lithic, is 60 to 80 inches. The natural drainage class is well drained. Water movement in the most restrictive layer is very low. Available water to a depth of 60 inches is moderate. Shrink-swell potential is low. This soil is not flooded. It is not ponded. There is no zone of water saturation within a depth of 72 inches. Organic matter content in the surface horizon is about 69 percent. Nonirrigated land capability classification is 7e. This soil does not meet hydric criteria.

Component: Rock outcrop (15%)

Generated brief soil descriptions are created for major soil components. The Rock outcrop is a miscellaneous area.

Map unit: ShD - Shelocta loam, 12 to 30 percent slopes

Component: Shelocta (90%)

The Shelocta component makes up 90 percent of the map unit. Slopes are 12 to 30 percent. This component is on structural benches on hills. The parent material consists of fine-loamy colluvium derived from shale and siltstone. Depth to a root restrictive layer, bedrock, paralithic, is 40 to 60 inches. The natural drainage class is well drained. Water movement in the most restrictive layer is moderately high. Available water to a depth of 60 inches is moderate. Shrink-swell potential is low. This soil is not flooded. It is not ponded. There is no zone of water saturation within a depth of 72 inches. Organic matter content in the surface horizon is about 69 percent. Nonirrigated land capability classification is 6e. This soil does not meet hydric criteria.

Map unit: SoC - Shelocta-Grigsby-Orrville complex, 2 to 15 percent slopes

Component: Shelocta (40%)

The Shelocta component makes up 40 percent of the map unit. Slopes are 2 to 15 percent. This component is on alluvial fans on hills, hillslopes on hills. The parent material consists of fine-loamy colluvium derived from shale and siltstone. Depth to a root restrictive layer, bedrock, paralithic, is 40 to 60 inches. The natural drainage class is well drained. Water movement in the most restrictive layer is moderately high. Available water to a depth of 60 inches is moderate. Shrink-swell potential is low. This soil is rarely flooded. It is not ponded. There is no zone of water saturation within a depth of 72 inches. Organic matter content in the surface horizon is about 69 percent. Nonirrigated land capability classification is 3e. This soil does not meet hydric criteria.

Component: Grigsby (35%)

The Grigsby component makes up 35 percent of the map unit. Slopes are 0 to 2 percent. This component is on flood plains on hills. The parent material consists of coarse-loamy alluvium derived from sedimentary rock. Depth to a root restrictive layer is greater than 60 inches. The natural drainage class is well drained. Water movement in the most restrictive layer is moderately high. Available water to a depth of 60 inches is moderate. Shrink-swell potential is low. This soil is frequently flooded. It is not ponded. A seasonal zone of water saturation is at 45 inches during January, February, March, April, May, December. Organic matter content in the surface horizon is about 2 percent. Nonirrigated land capability classification is 2w. This soil does not meet hydric criteria.

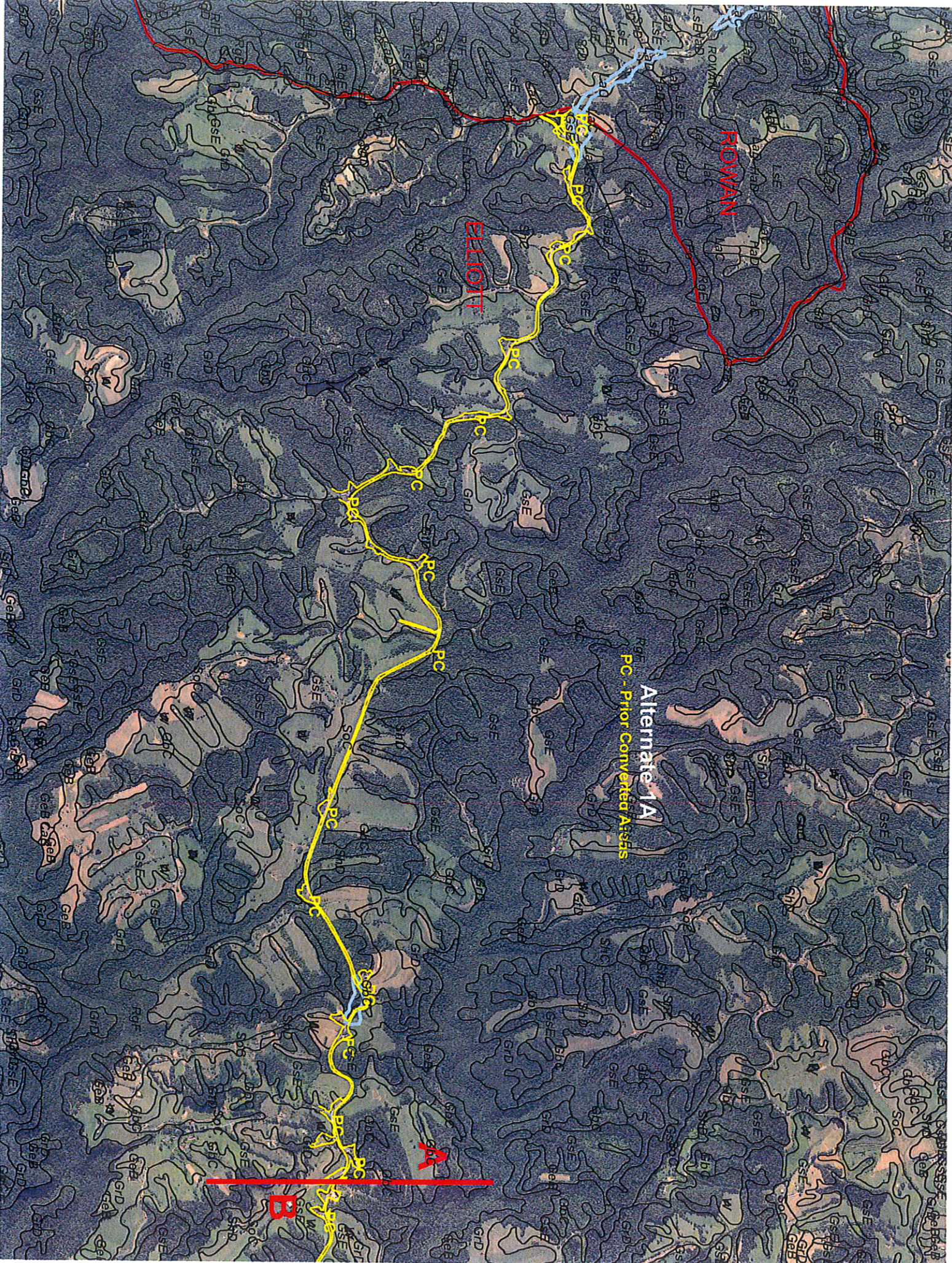
Map Unit Description (Brief, Generated)

Elliott County, Kentucky

Map unit: SoC - Shelocta-Grigsby-Orrville complex, 2 to 15 percent slopes

Component: Orrville (15%)

The Orrville component makes up 15 percent of the map unit. Slopes are 0 to 3 percent. This component is on flood plains on hills. The parent material consists of fine-loamy alluvium derived from sedimentary rock. Depth to a root restrictive layer is greater than 60 inches. The natural drainage class is somewhat poorly drained. Water movement in the most restrictive layer is moderately high. Available water to a depth of 60 inches is high. Shrink-swell potential is low. This soil is frequently flooded. It is not ponded. A seasonal zone of water saturation is at 10 inches during January, February, March, April, May, December. Organic matter content in the surface horizon is about 3 percent. Nonirrigated land capability classification is 2w. This soil does not meet hydric criteria.

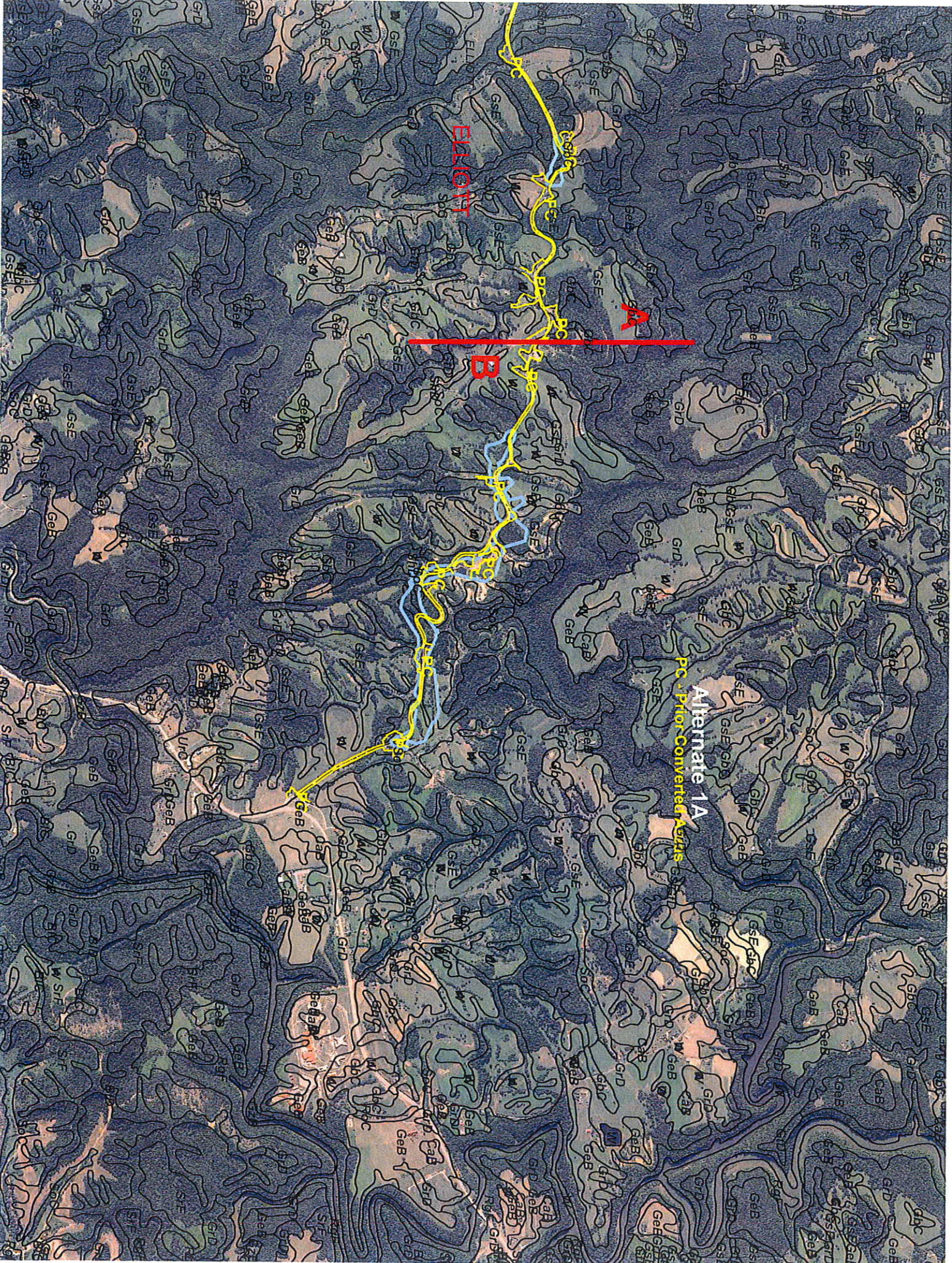


ELLIOTT

ROWAN

Alternate 1A
PC - Prior Converted A:355

B



ELIOTT

A

B

Alternate 1A
PC - Prior Converted Acreage

Completed By: SEJ

Agricultural Land
Evaluation Worksheet 1 and 4
for Site or Corridor
Ky 32 Improvement Project 1A

Date: 7/9/2012

County and State Elliott Co. KY

MLRA 124

Indicator Crop: Corn

Acres in Site = 85.0

Ag Groups and Relative Value from County Data

Map Symbol	Ac. Prime Farmland	Ac Statewide Farmland	Ac Not Important Farmland	Ag. Group
GsE			45.0	6
GtD			23.8	5
ShD			0.4	6
SoC		3.2		3
PC			12.6	
Totals	0.0	3.2	81.8	85.0

Ag group	Relative Value	Site acres per group	Product of Relative Value & Acres
1			0.00
2			0.00
3	72	3.2	230.40
4			0.00
5	49	23.8	1166.20
6	0	45.4	0.00
7			0.00
8			0.00
9			0.00
10			0.00

Totals

72.4	1396.60
------	---------

Average Site Value

19

Summaries

Acres Prime and Unique Farmland

0.0

Acres Statewide & Local Important Farmland

3.2

% of Farmland in County or Local Gov. unit to be Converted

0.01

% of Farmland in Gov Jurisdiction with same or higher relative value to be converted

100.00

Co. Data: Part II No. 6 Acres 46,638

Co. Data: Work sheet same or higher value 2 Acres 46,638

Completed By: SEJ

Agricultural Land
Evaluation Worksheet 1 and 4
for Site or Corridor
Ky 32 Improvement Project 1B

Date: 7/9/2012

County and State Elliott Co. KY

MLRA 124

Indicator Crop: Corn

Acres in Site = 274.0

Map Symbol	Ac. Prime Farmland	Ac Statewide Farmland	Ac Not Important Farmland	Ag. Group
GsE			148.6	6
GtD			45.3	5
ShD			1.0	6
SoC		9.5		3
GeB	0.4			4
PC			69.2	
Totals	0.4	9.5	264.1	274.0

Ag Groups and Relative Value from County Data

Ag group	Relative Value	Site acres per group	Product of Relative Value & Acres
1			0.00
2			0.00
3	72	9.5	684.00
4	75	0.4	30.00
5	49	45.3	2219.70
6	0	148.6	0.00
7			0.00
8			0.00
9			0.00
10			0.00

Totals

203.8	2933.70
-------	---------

Average Site Value

14

Summaries

Acres Prime and Unique Farmland

0.4

Acres Statewide & Local Important Farmland

9.5

% of Farmland in County or Local Gov. unit to be Converted

0.02

% of Farmland in Gov Jurisdiction with same or higher relative value to be converted

100.00

Co. Data: Part II No. 6 Acres 46,638

Co. Data: ^{Work sheet} 2 ^{same or} higher value Acres 46,638

Completed By: SEJ

Agricultural Land
 Evaluation Worksheet 1 and 4
 for Site or Corridor
 Ky 32 Improvement Project 2A

Date: 7/9/2012

County and State Elliott Co. KY

MLRA 124

Indicator Crop: Corn

Acres in Site = 231.0

Map Symbol	Ac. Prime Farmland	Ac Statewide Farmland	Ac Not Important Farmland	Ag. Group
GsE			117.8	6
GtD			42.9	5
ShD			0.5	6
SoC		7.4		3
GbC		0.2		3
GeB	0.2			4
PC			62.0	
Totals	0.2	7.6	223.2	231.0

Ag Groups and Relative Value from County Data

Ag group	Relative Value	Site acres per group	Product of Relative Value & Acres
1			0.00
2			0.00
3	72	7.6	547.20
4	75	0.2	15.00
5	49	42.9	2102.10
6	0	118.3	0.00
7			0.00
8			0.00
9			0.00
10			0.00

Totals

169.0	2664.30
-------	---------

Average Site Value

16

Summaries

Acres Prime and Unique Farmland

0.2

Acres Statewide & Local Important Farmland

7.6

% of Farmland in County or Local Gov. unit to be Converted

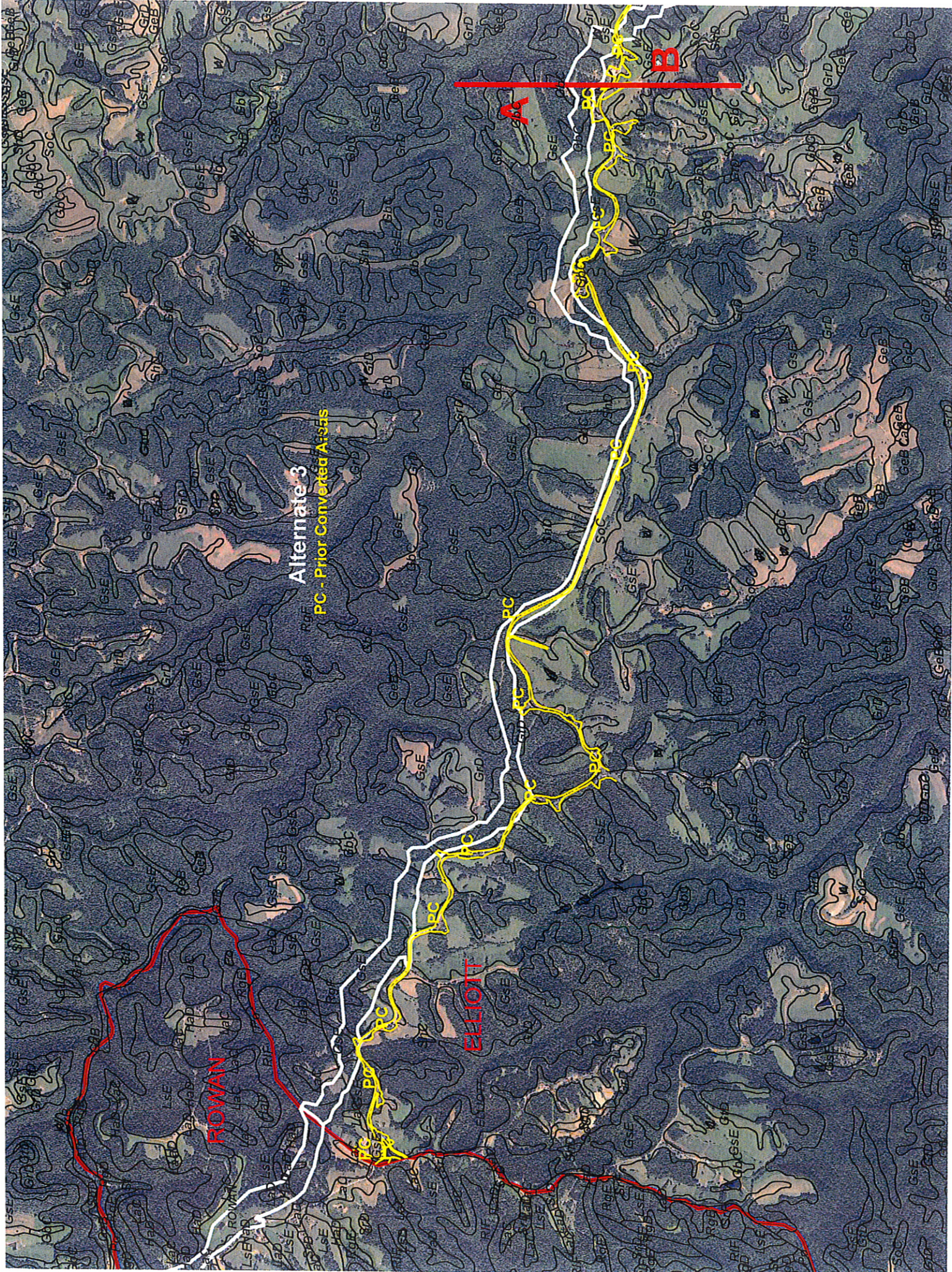
0.02

% of Farmland in Gov Jurisdiction with same or higher relative value to be converted

100.00

Co. Data: Part II No. 6 Acres 46,638

Co. Data: Work sheet same or
2 higher value Acres 46,638



Completed By: SEJ

Agricultural Land
Evaluation Worksheet 1 and 4
for Site or Corridor
Ky 32 Improvement Project 3

Date: 7/9/2012

County and State Elliott Co. KY

MLRA 124

Indicator Crop: Corn

Acres in Site = 337.0

Ag Groups and Relative Value from County Data

Map Symbol	Ac. Prime Farmland	Ac Statewide Farmland	Ac Not Important Farmland	Ag. Group
GbC		9.6		3
GrD			6.5	5
GsE			222.7	6
GtD			61.4	5
RgF			3.2	7
ShD			3.1	6
SoC		10.5		3
PC			20.0	
Totals	0.0	20.1	316.9	337.0

Ag group	Relative Value	Site acres per group	Product of Relative Value & Acres
1			0.00
2			0.00
3	72	20.1	1447.20
4			0.00
5	49	67.9	3327.10
6	0	225.8	0.00
7	0	3.2	0.00
8			0.00
9			0.00
10			0.00

Totals 317.0 4774.30

Average Site Value 15

Summaries

Acres Prime and Unique Farmland 0.0

Acres Statewide & Local Important Farmland 20.1

% of Farmland in County or Local Gov. unit to be Converted 0.04

% of Farmland in Gov Jurisdiction with same or higher relative value to be converted 100.00

Co. Data: Part II No. 6 Acres 46,638

Co. Data: ^{Work sheet} 2 ^{same or} _{higher value} Acres 46,638