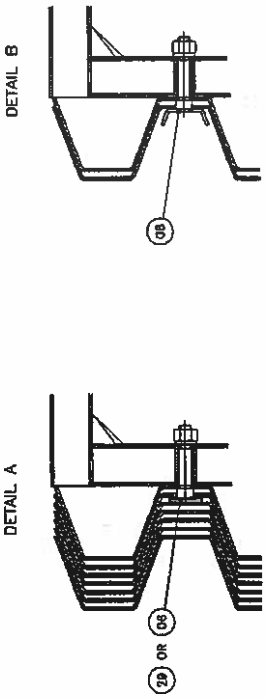
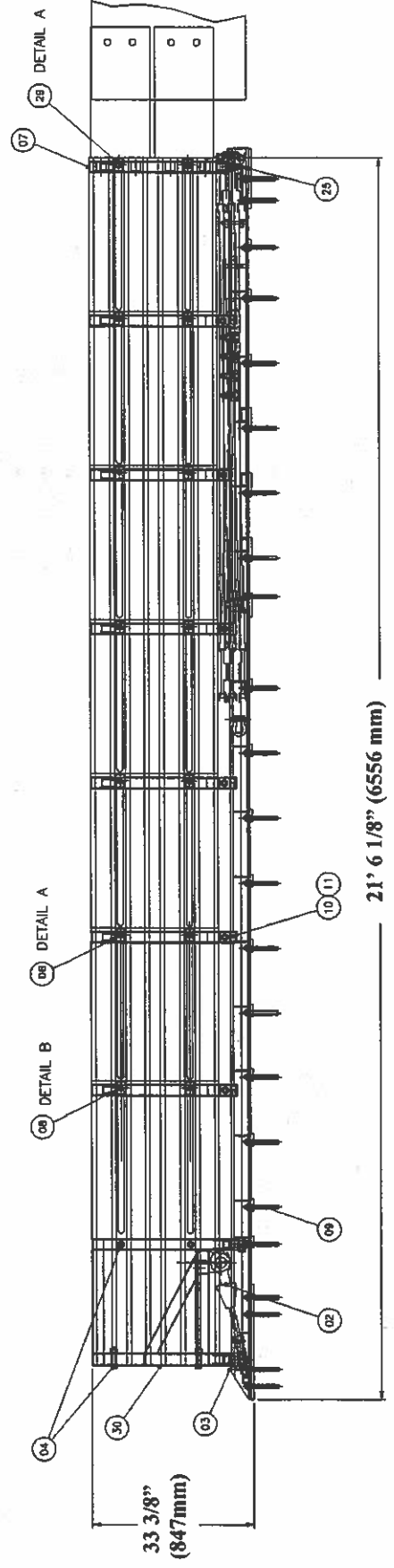
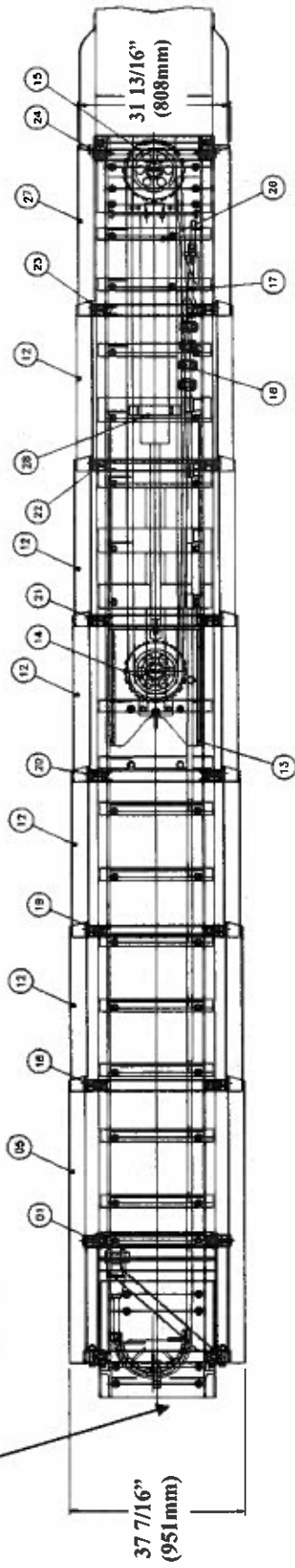


APPENDIX D - SMART CUSHION™, TEST LEVEL 3

- PARTS LIST**
- 01 - Front Sled
 - 02 - Cable Assembly
 - 05 - Sled Panel
 - 07 - Terminal Brace
 - 09 - Anchor Bolts
 - 12 - Side Panels
 - 14 - Mobile Sheave Asbly
 - 17 - Cable Adjuster Bolt
 - 18-23 - Mobile frames 1-6
 - 26 - Cylinder
 - 27 - Rear Panel
 - 06,08,29 - Side Keepers



Serial number location



APPENDIX E2 - TEST LEVEL 3 FOUNDATION

Cross Slope at Top Surface not to Exceed 1 in 10
Foundation must be a Level Plane

* * * * Wide Hazards and Transitions may require
the foundation to be longer. See Transition Drawings.

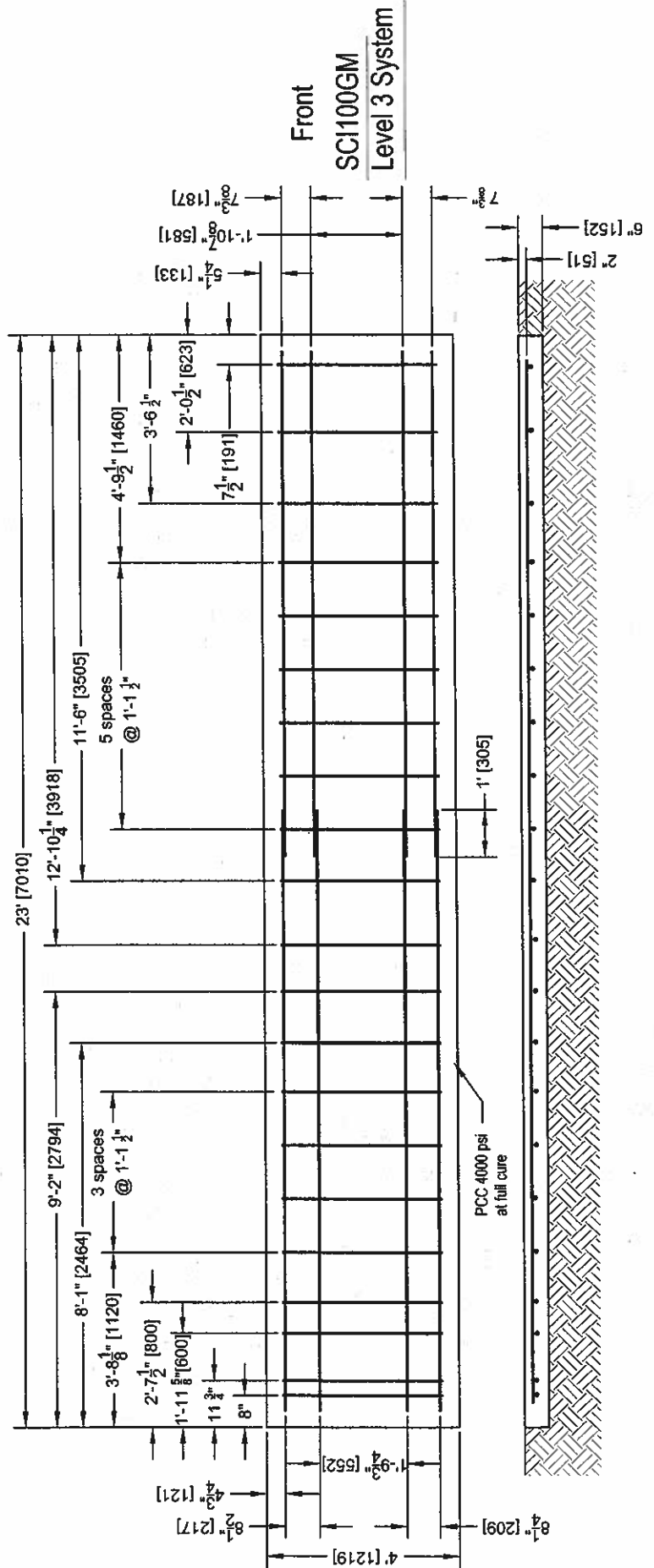
SPECIFICATIONS

All reinforcing steel - straight #4 ASTM-A36

Embedment requirements:

- 6" reinforced concrete pad with anchor embedment of 5 1/2"
- 8" nonreinforced concrete pad with anchor embedment of 5 1/2"
- 3" asphalt over 3" concrete with anchor embedment of 16 1/2"
- 6" asphalt over 6" of compacted subbase with anchor embedment of 16 1/2"
- 8" asphalt with anchor embedment of 16 1/2"

The contractor shall furnish a certification for material installed to the following requirements:
 6" reinforced concrete (PCC) sampling per ASTM C31-84, testing per ASTM C39-84
 8" nonreinforced concrete (PCC) sampling per ASTM C31-84, testing per ASTM 39-84
 3" asphalt over 3" concrete - Type SP 12.5 Level C or higher
 6" asphalt over 6" of compacted subbase - same as above
 8" asphalt (AC) - Type SP 12.5 Traffic Level C or higher

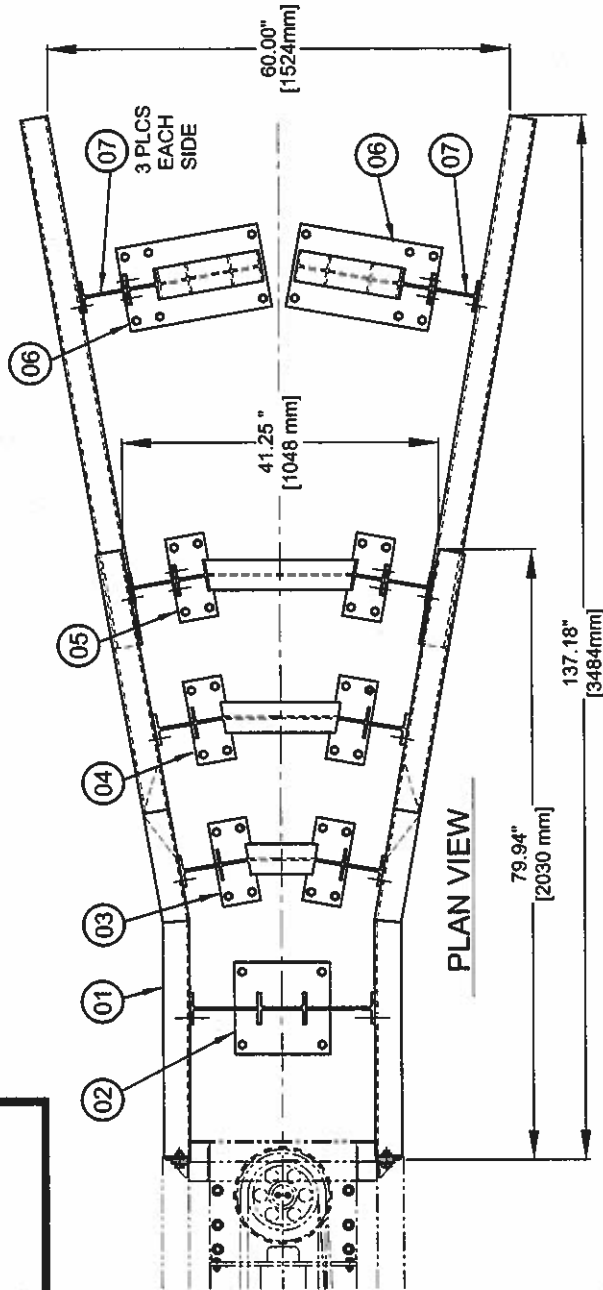


APPENDIX F - TRANSITION, THRIE BEAM WIDE TAPER

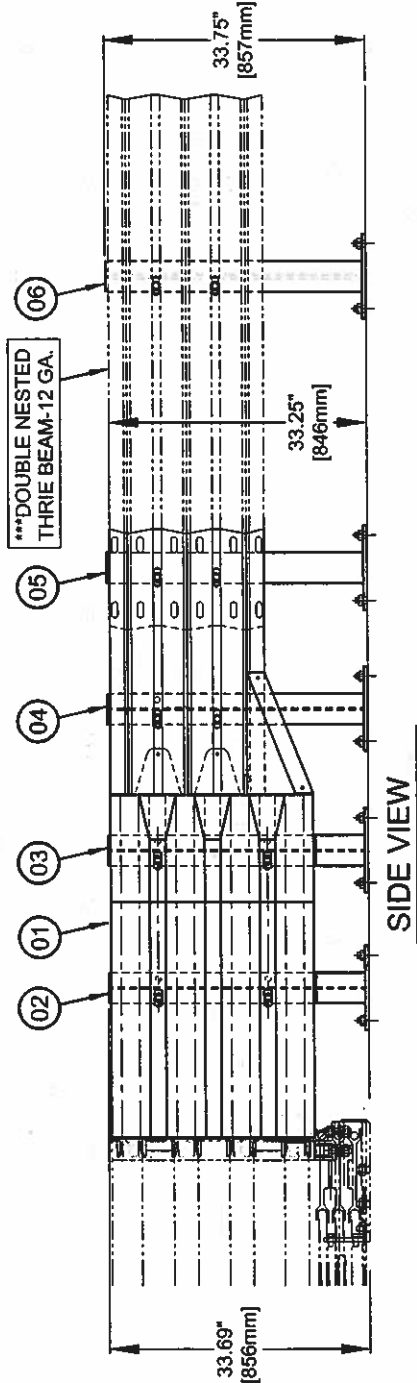
Parts List:

- 01-Transition Thrie 10 Degree Flare Right #9467
- 01-Transition Thrie 10 Degree Flare Left #9468
- 02-Transition Concrete Spanner Brace #9469
- 03-Transition Concrete #1 Tapered Spanner Brace # 9470
- 04-Transition Gore Tapered #1 Spanner Brace #9472
- 05-Transition Gore Tapered #2 Spanner Brace #9473
- 06-Thrie Beam Concrete Leg Brace #9474
- 07-Thrie Beam Blockout AASHTO PWB02

Thrie Beam Panels behind assembly provided by others



NOTES:
 1) DIMENSIONS SHOWN ARE FOR 60" WIDTH
 2) FOR EACH 1" OF WIDTH CHANGE,
 ADD OR SUBTRACT THE FOLLOWING:
 2.88" [73.15mm] TO LENGTH OF GUARDRAIL
 2.84" [72.13mm] TO OVERALL LENGTH
 3) ADD OR SUBTRACT ADDITIONAL POST ON EACH SIDE FOR EACH 13" [330mm] CHANGE IN WIDTH.
 4) GUARDRAIL TERMINATION - YOU MUST ADD THE GUARDRAIL OVERLAP LENGTH AND TERMINATE PER STATE REGULATIONS.



The use of the last brace will be determined by whether the Thrie Beam can be attached to the obstruction or not. If the Thrie Beam distance from the last brace is 40 inches or less and can be attached, you will not need a brace at the obstruction. If you cannot attach to the obstruction, you may need a brace and drill holes in the Thrie Beam at the furthest rearward location.