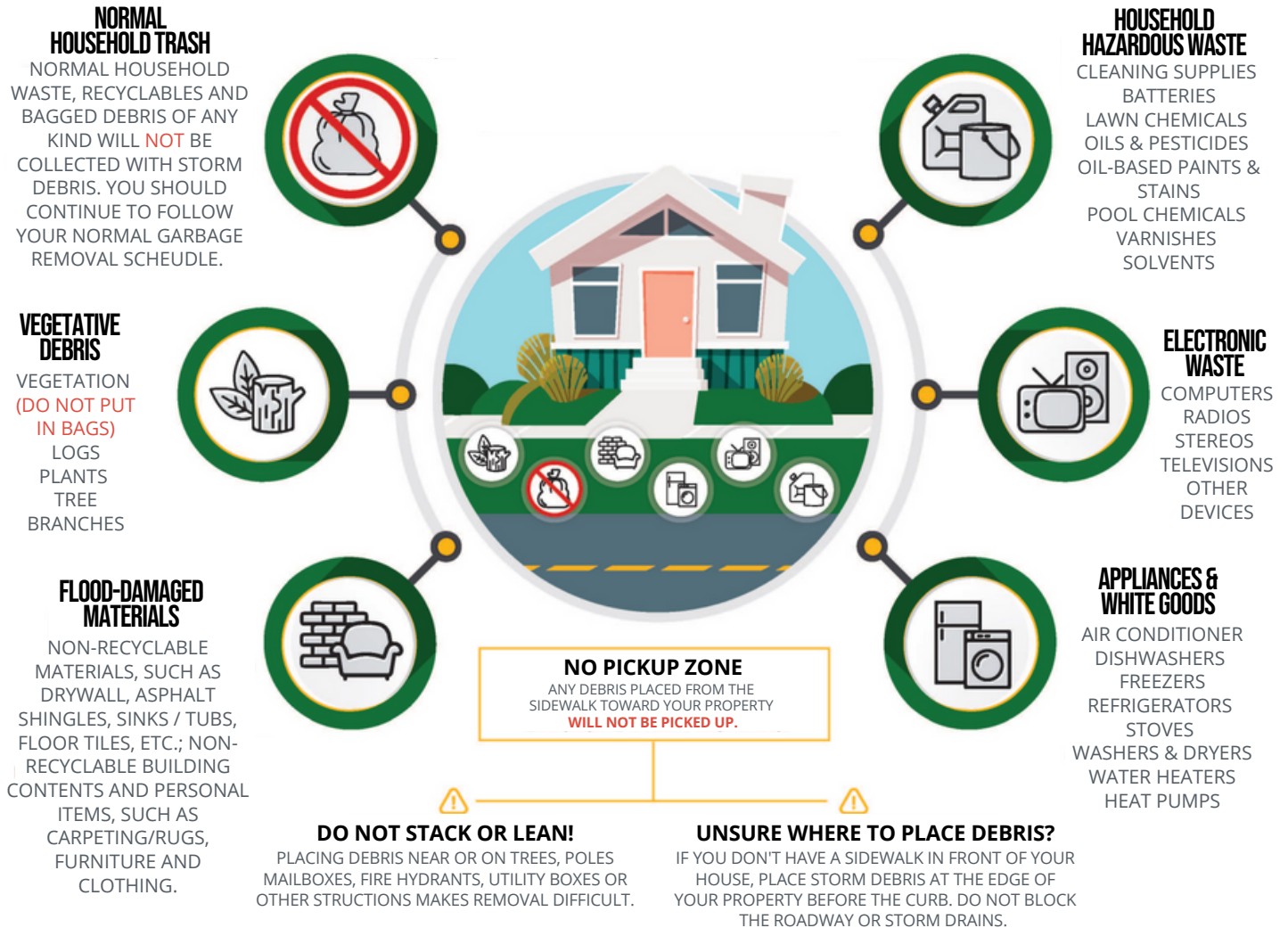


EASTERN KENTUCKY ROADSIDE FLOOD DEBRIS REMOVAL ENDING SOON

SORT ELIGIBLE DEBRIS USING THE 5 CATEGORIES BELOW

PLACE ELIGIBLE DEBRIS ON RIGHT OF WAY OR COMMUNITY DROP OFF SITE **BY NOV. 1.**



INELIGIBLE DEBRIS: COMMERCIAL PROPERTY DEBRIS (INCLUDES MOBILE HOME PARKS), DEBRIS LOCATED ON PRIVATE PROPERTY, DEMOLITION MATERIALS (DESTROYED HOMES, BARNs, STRUCTURES WITH MORE THAN ONE WALL STILL STANDING). CONTACT YOUR COUNTY FISCAL COURT FOR POSSIBLE ASSISTANCE MOVING THIS TYPE OF DEBRIS.