

Town Mountain Road Project



The **purpose** of the project is to:

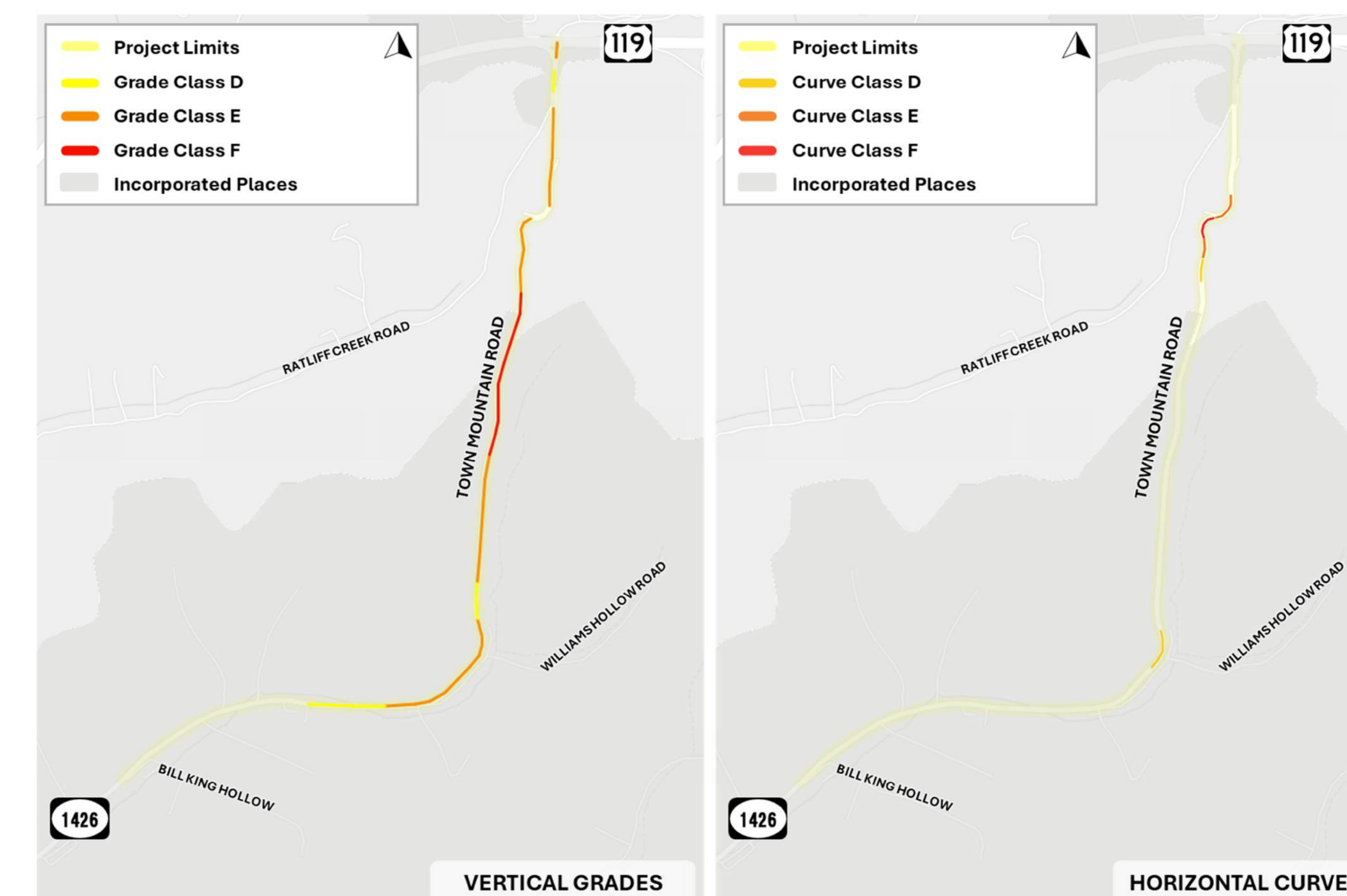
- improve roadway **geometrics**,
- mitigate **rockfalls**,
- increase **capacity**,
- improve **safety**, and
- provide a more **direct route** to downtown Pikeville from US 119.

A secondary goal is to utilize excess earthwork to generate developable land for the City of Pikeville.

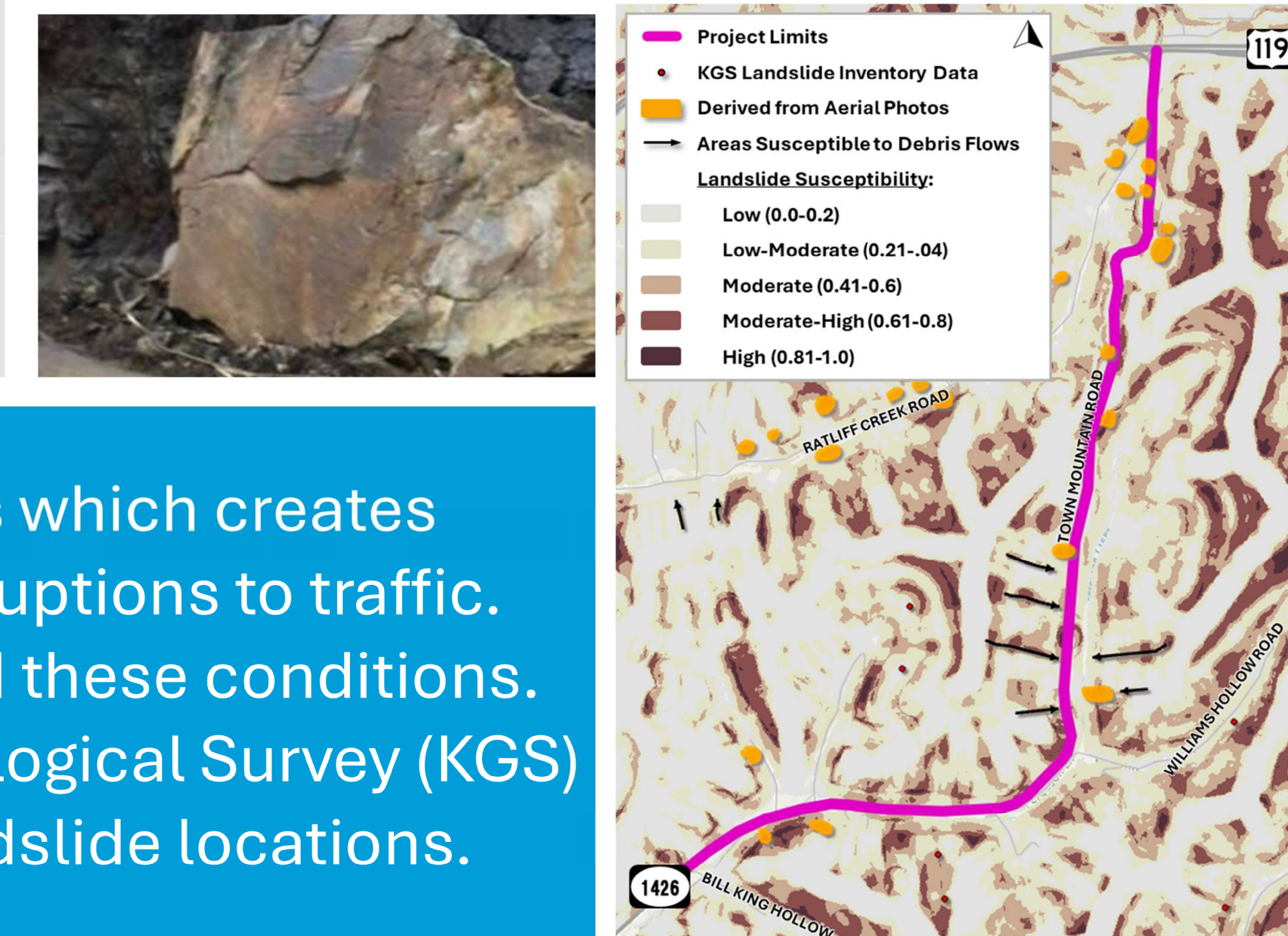


Town Mountain Road (KY 1426) cuts through steep terrain, serving as the main north/south connection to downtown Pikeville from US 119.

The exhibits below illustrate 19 vertical grades (crests/sags) and 5 horizontal curves (bends/turns) that are steeper and sharper than recommended design standards.



These conditions, coupled with narrow lanes (10-11-foot-wide), minimal shoulders (less than 1-foot paved), and a short truck climbing lane (0.5-mile of the 2.5-mile corridor), contribute to reduced driving speeds and increased congestion, particularly when there are events at the Expo Center in Pikeville.



This area also experiences rockslides which creates hazardous driving conditions and interruptions to traffic. Historical flood events have exacerbated these conditions. The adjacent exhibit shows Kentucky Geological Survey (KGS) data on historical and susceptible landslide locations.