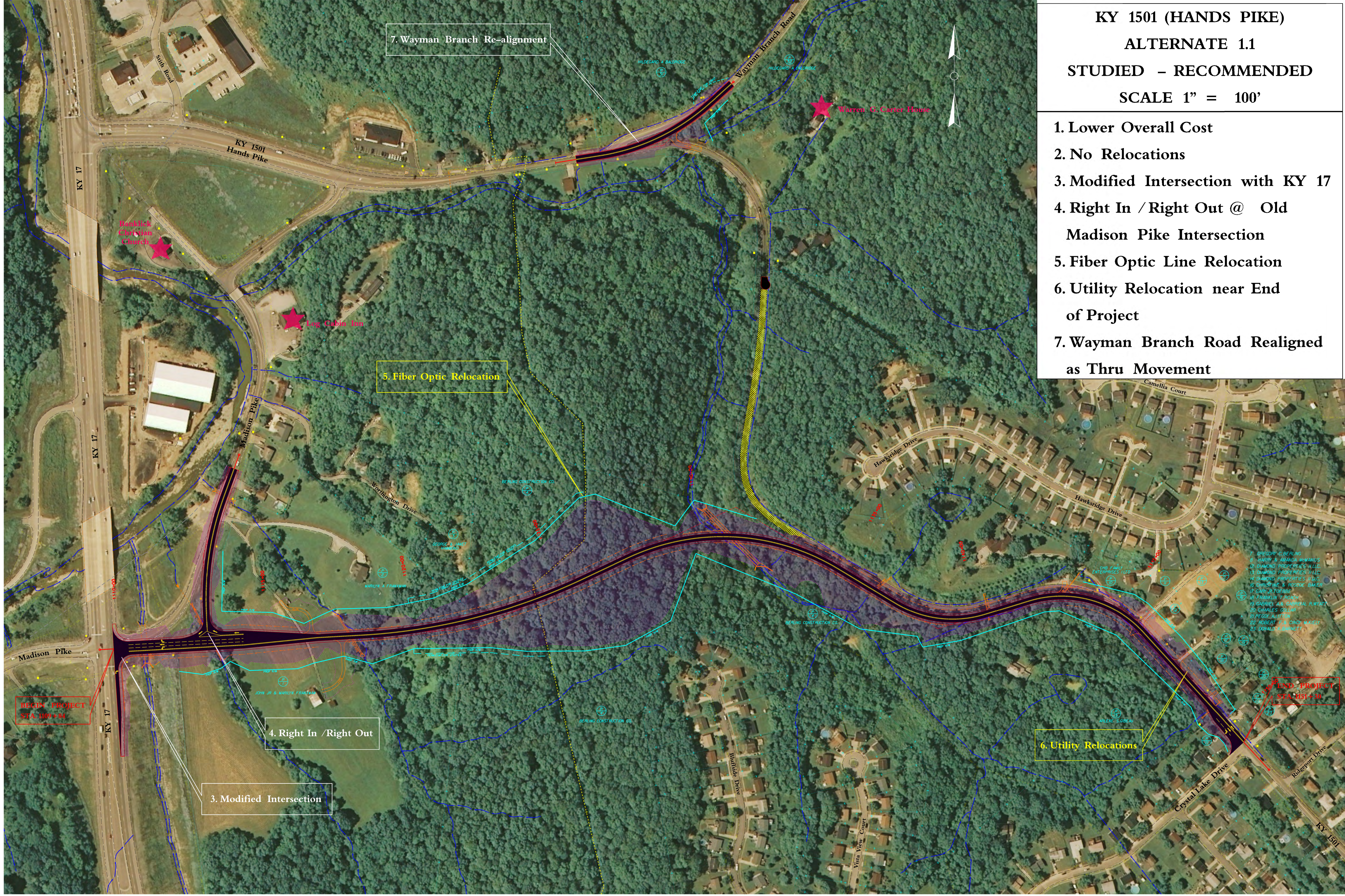


**KY 1501 (HANDS PIKE)
ALTERNATE 1.1
STUDIED - RECOMMENDED
SCALE 1" = 100'**

- 1. Lower Overall Cost**
- 2. No Relocations**
- 3. Modified Intersection with KY 17**
- 4. Right In / Right Out @ Old Madison Pike Intersection**
- 5. Fiber Optic Line Relocation**
- 6. Utility Relocation near End of Project**
- 7. Wayman Branch Road Realigned as Thru Movement**



- 1. BROADWAY CORP
- 2. WORTH & ALLAN
- 3. DIAMOND PROPERTIES LLC
- 4. DIAMOND PROPERTIES LLC
- 5. WINDYBROOK & RIDGECREST BAKERY
- 6. CARL & YOSIEB
- 7. FRANKLIN T. ROYCE
- 8. GABRIEL & GUYRAL R. WYATT
- 9. CHARLES COLLIER
- 10. PEGGY A. HUNTER
- 11. ROBERT T. & CINDY M. LEWIS
- 12. DONALD E. BARNETT