



KENTUCKY
TRANSPORTATION
CABINET

Michael Baker
INTERNATIONAL

Brent Spence Bridge Aerial
NOV. 16, 2020



12/18/20



HEAT AFFECTED ZONE



12/18/20



REMOVED CONCRETE BARRIERS

REMOVED CONCRETE DECK

COMPLETED REPAIRS: UPPER/SOUTHBOUND DECK



12/18/20



REMOVED STEEL BEAMS

COMPLETED REPAIRS: UPPER/SOUTHBOUND DECK



12/18/20



REPLACED STEEL BEAMS

COMPLETED REPAIRS: UPPER/SOUTHBOUND DECK



12/18/20



INSTALLED NEW
CONCRETE DECK PANS

COMPLETED REPAIRS: UPPER/SOUTHBOUND DECK



12/18/20



INSTALLED NEW REBAR

COMPLETED REPAIRS: UPPER/SOUTHBOUND DECK

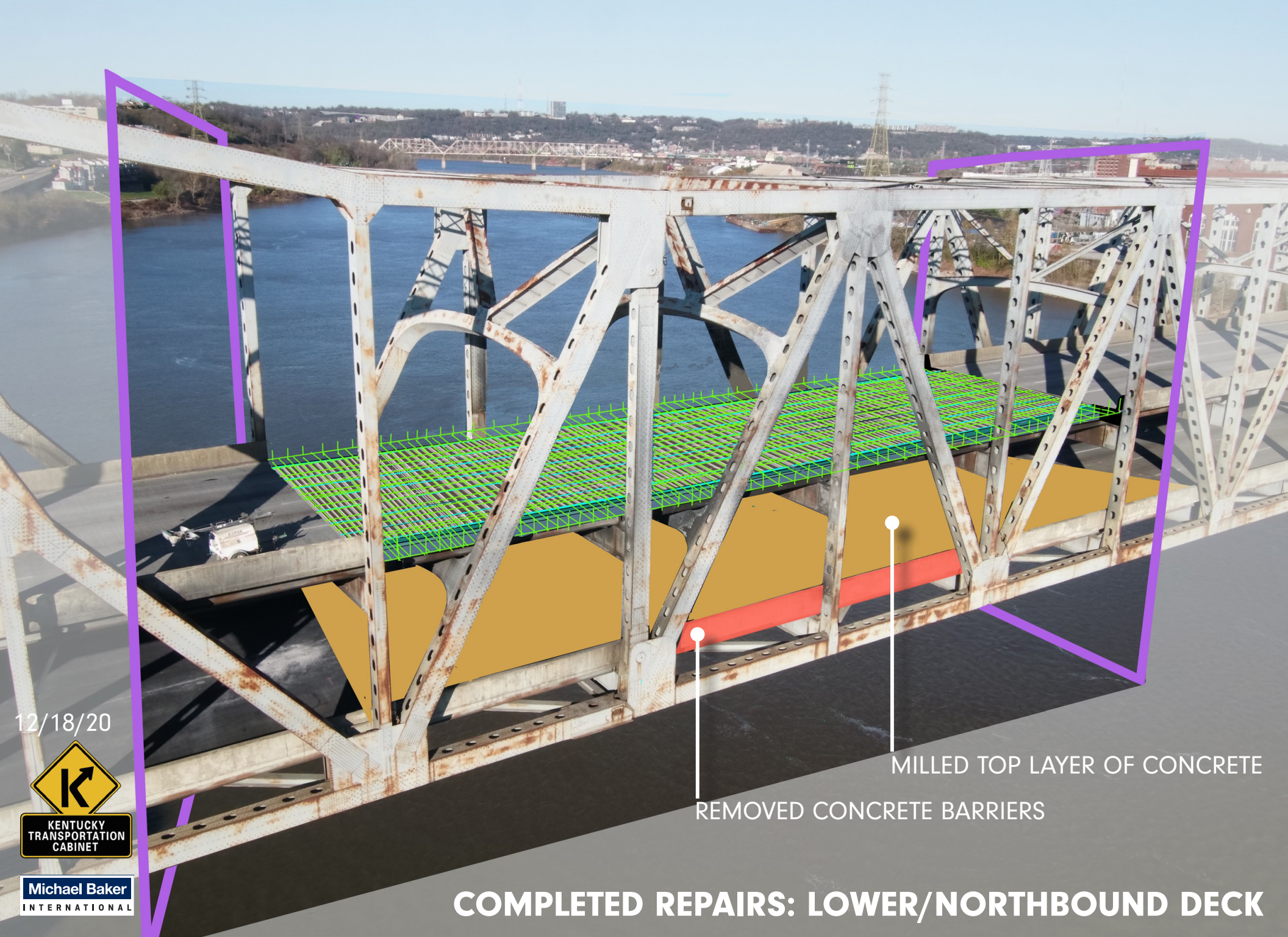


12/18/20



INSTALLED NEW TIE-INS FOR
CONCRETE BARRIERS

COMPLETED REPAIRS: UPPER/SOUTHBOUND DECK



12/18/20



MILLED TOP LAYER OF CONCRETE
REMOVED CONCRETE BARRIERS

COMPLETED REPAIRS: LOWER/NORTHBOUND DECK



12/18/20



INSTALLED NEW TIE-INS FOR
CONCRETE BARRIERS

COMPLETED REPAIRS: LOWER/NORTHBOUND DECK



12/18/20



POURED NEW CONCRETE DECK



POURED NEW CONCRETE BARRIERS



POURED NEW CONCRETE LAYER

COMPLETED REPAIRS: UPPER AND LOWER DECKS



KENTUCKY
TRANSPORTATION
CABINET

Michael Baker
INTERNATIONAL

REPAIRS COMPLETED