

Frequently Asked Questions

■ *When will this work take place?*

Construction is anticipated to begin no earlier than January 2017.

■ *What are the project goals?*

- Blend the new roadway seamlessly with its surroundings while solving congestion and safety issues
- Improve roadway safety
- Improve economic development and roadway capacity to accommodate future traffic volumes
- Improve mobility within the community
- Accommodate pedestrian and bicycle traffic

■ *What are the next steps?*

After the public meeting, the following steps are to be taken for this project.

1. KYTC will review and consider all comments received.
2. KYTC will hold a Citizen Advisory Committee (CAC) meeting later this year. The project team will then meet and review all comments received to help select a preferred alternative to proceed with towards final plans.

■ *Comments, Questions, and Questionnaires*

Comments and questions regarding this project may be submitted through a questionnaire provided at the public sign-in table. Please leave the completed form in the box near the sign-in table as you leave, or take the form home with you and submit it prior to November 10, 2015. Or take the online version of the questionnaire using the web link at the bottom of this page.

■ *Who do I contact with concerns or questions?*

CONTACT INFORMATION

Robin L. Sprague, P.E.
Kentucky Transportation Cabinet
Division of Highway Design
District 7 Office
763 West New Circle Road
Lexington, KY 40512
859.246.2355

E-mail: robin.sprague@ky.gov

Project Web Links

FACEBOOK: www.facebook.com/VersaillesMobilityCorridor

KYTC: transportation.ky.gov/District-7/Pages/Northwest-Versailles-Mobility-Corridor.aspx

Online Version of Questionnaire: www.surveymonkey.com/r/VersaillesMobilityCorridor

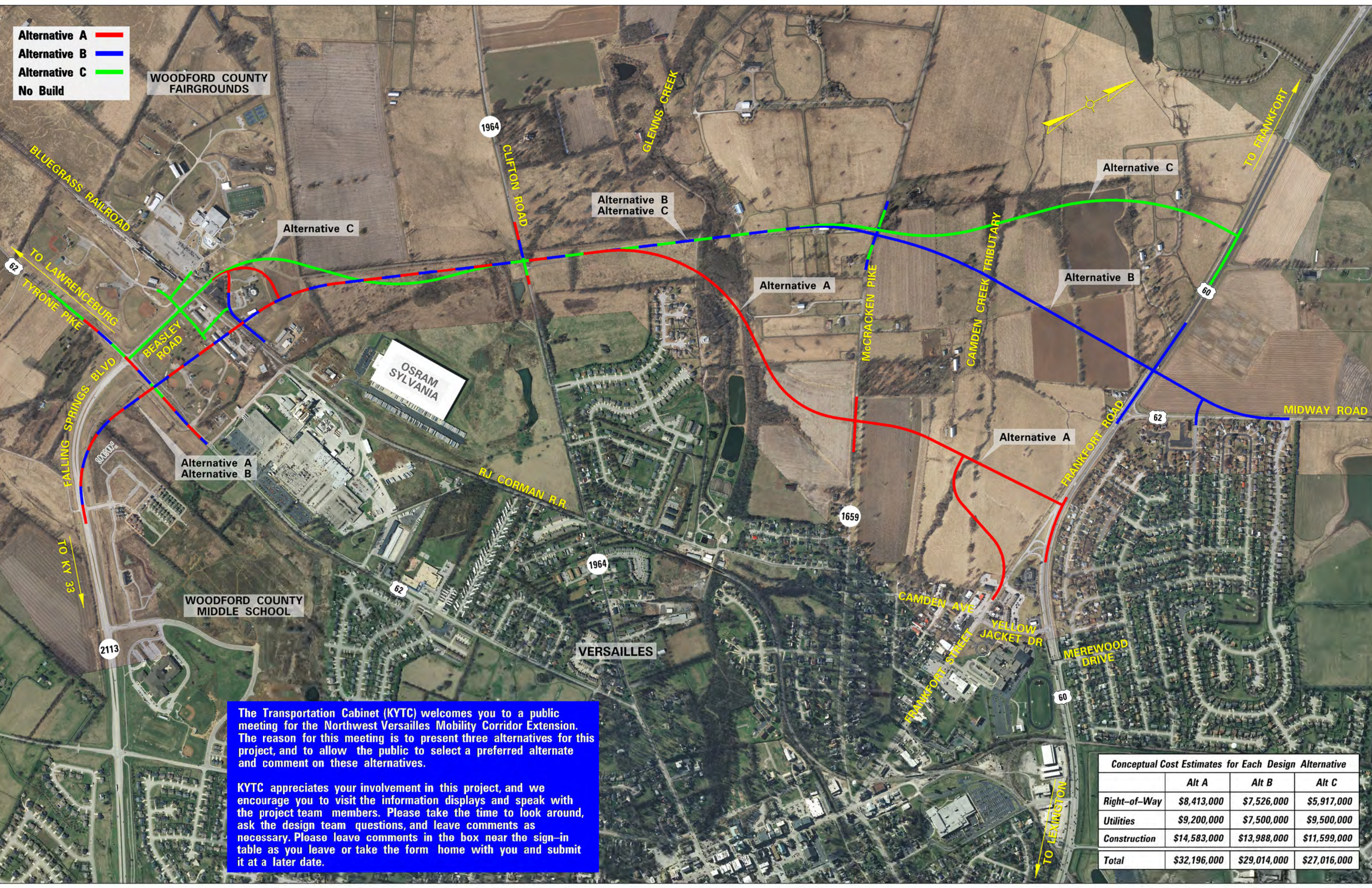


**Northwest Versailles
Mobility Corridor
Woodford County**
(ITEM No. 7-345.00)

BURGESS & NIPLE
Engineers ■ Architects ■ Planners

- Alternative A —
- Alternative B —
- Alternative C —
- No Build

WOODFORD COUNTY FAIRGROUNDS



The Transportation Cabinet (KYTC) welcomes you to a public meeting for the Northwest Versailles Mobility Corridor Extension. The reason for this meeting is to present three alternatives for this project, and to allow the public to select a preferred alternate and comment on these alternatives.

KYTC appreciates your involvement in this project, and we encourage you to visit the information displays and speak with the project team members. Please take the time to look around, ask the design team questions, and leave comments as necessary. Please leave comments in the box near the sign-in table as you leave or take the form home with you and submit it at a later date.

Conceptual Cost Estimates for Each Design Alternative			
	Alt A	Alt B	Alt C
Right-of-Way	\$8,413,000	\$7,526,000	\$5,917,000
Utilities	\$9,200,000	\$7,500,000	\$9,500,000
Construction	\$14,583,000	\$13,988,000	\$11,599,000
Total	\$32,196,000	\$29,014,000	\$27,016,000